

# Lab & Industrial Sublease Pacific Technology Park

savills

FOR SUBLEASE

9401 Waples Street, Suite 100, San Diego, CA 92121



## SPACE PROFILE

22,773

Total SF

Through 7/31/2028

Term

45 Spaces

Parking

Negotiable

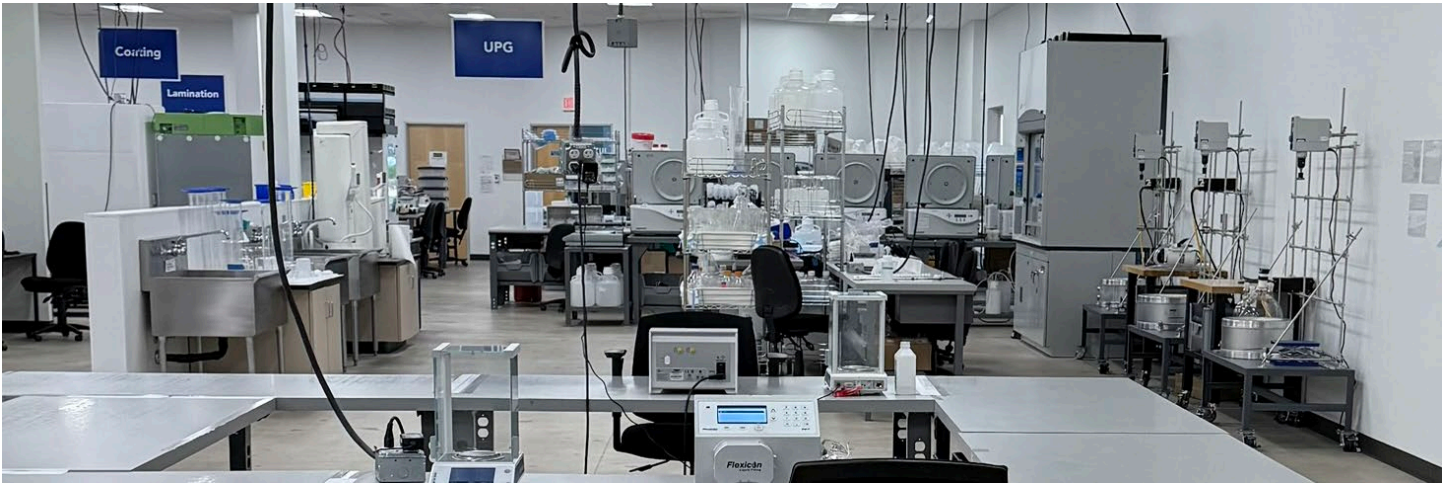
Rental rate

Immediate

Availability

Available & Negotiable

FF&E



## SPACE PROFILE

Lighting

LED

Sprinklers

Upgraded to ESFR

Racking

4 High

Clear Height

26' 6" in warehouse

2 Docks, No GL



## KEY HIGHLIGHTS

### Project Details

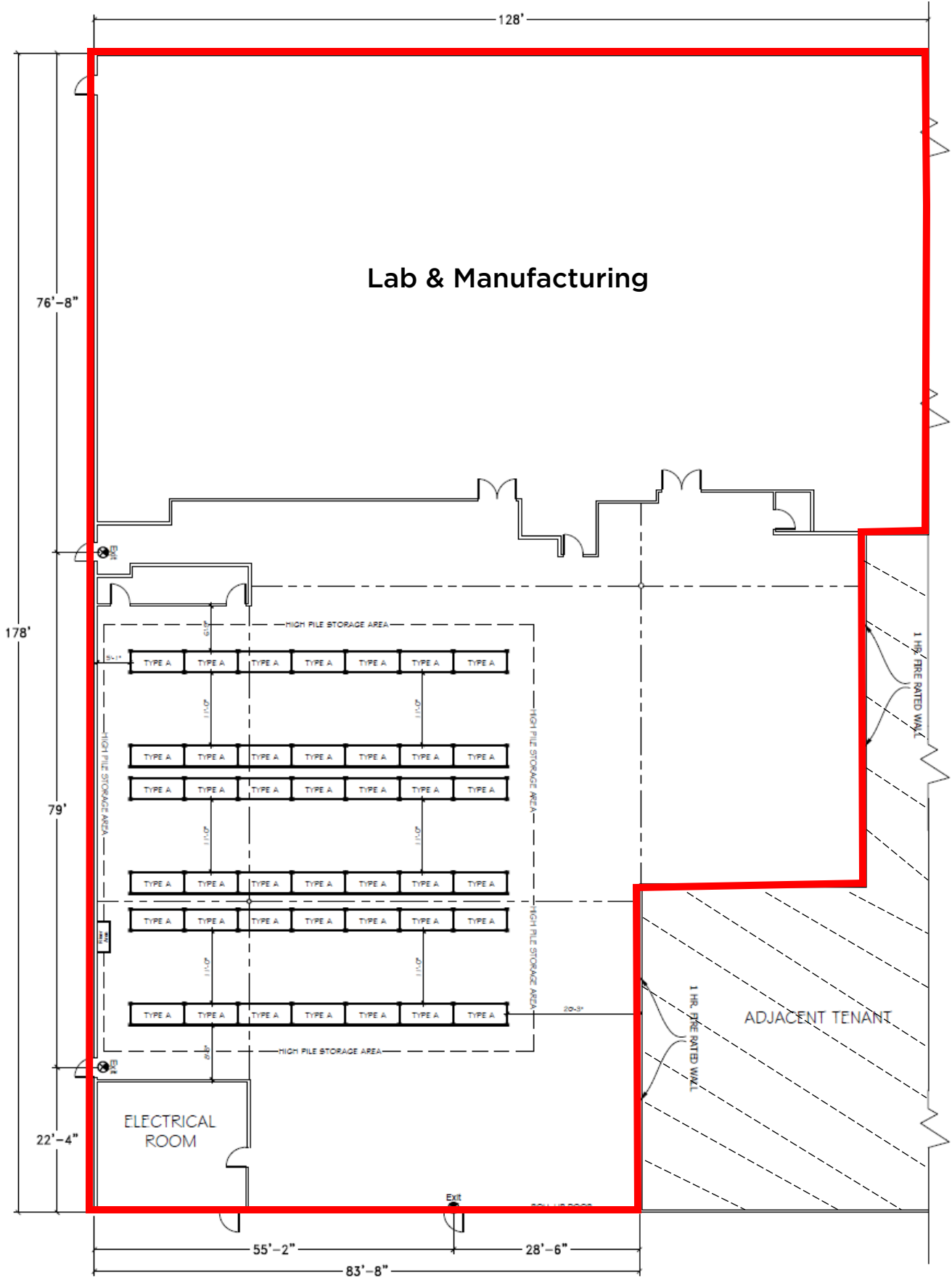
- Building signage available
- Parking ratio 2.0/1,000 SF
- Additional space available in project on a direct basis with Landlord

### Suite Details (Equipment is Negotiable)

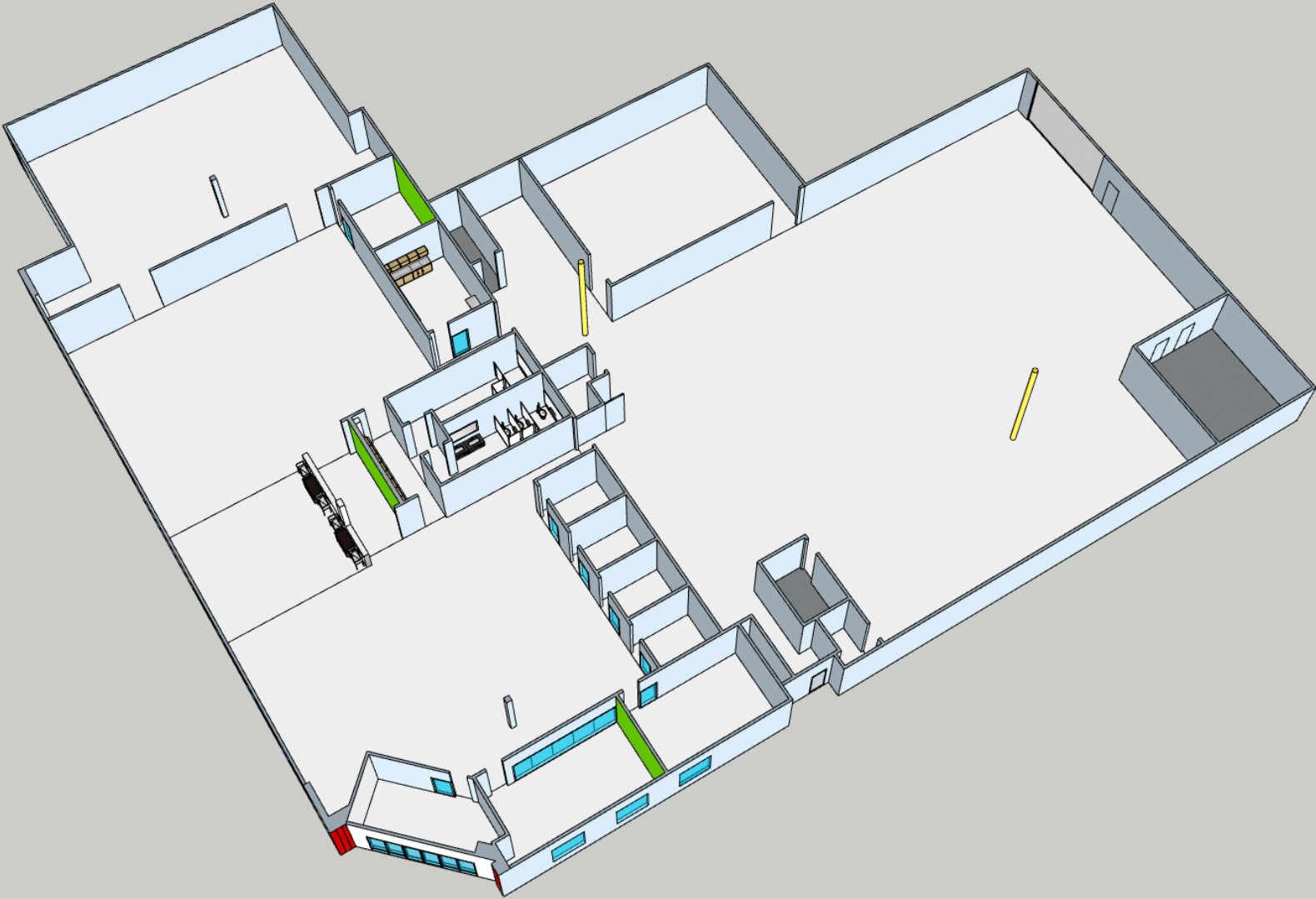
- Existing racking available
- Electric forklifts and chargers
- Compressed air unit
- Freeze Dryers
- Warehouse skylights
- Humidity control rooms
- 12' ceiling height in manufacturing area

SUITE 100

22,773 SF



[LINK TO FLOOR PLAN HERE](#)

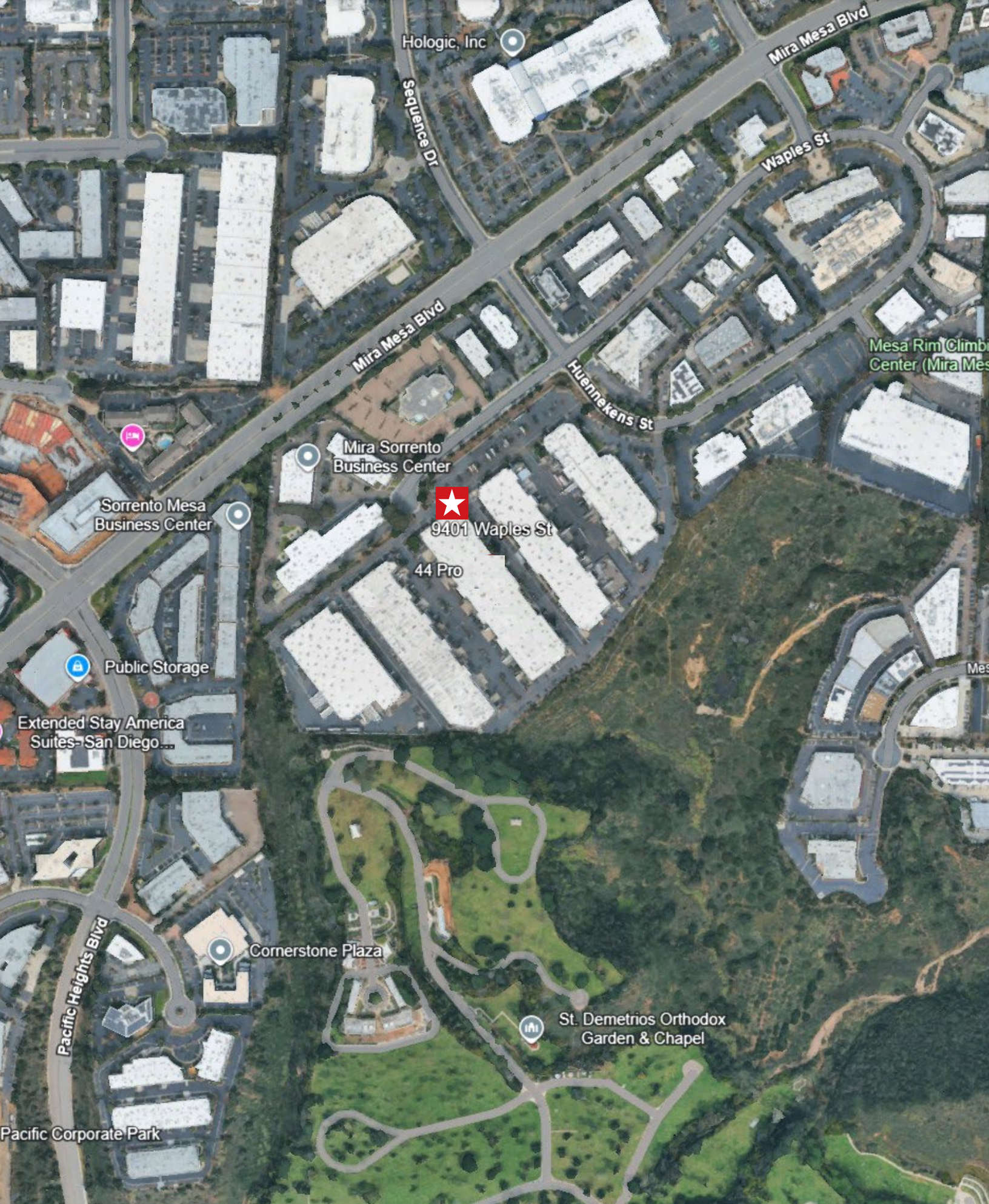












Hologic, Inc

Mira Mesa Blvd

Sebaste Dr

Waples St

Mira Mesa Blvd

Huennekens St

Mesa Rim Climbing Center (Mira Mesa)

Mira Sorrento Business Center

9401 Waples St

44 Pro

Sorrento Mesa Business Center

Public Storage

Extended Stay America Suites - San Diego...

Pacific Heights Blvd

Cornerstone Plaza

St. Demetrios Orthodox Garden & Chapel

Pacific Corporate Park



**Zach Millrood**

+1 858 336 8660  
zmillrood@savills.us  
License # 01317277

**Shane Poppen**

+1 858 354 9435  
spoppen@savills.us  
License: # 01701190



© 2024 Savills. All rights reserved. The information contained in this communication has been obtained from a variety of sources believed to be reliable but has not been verified. NO WARRANTY OR REPRESENTATION, EXPRESS OR IMPLIED, IS MADE AS TO THE CONDITION OF THE PROPERTY OR ACCURACY OR COMPLETENESS OF THE INFORMATION CONTAINED HEREIN AND SAME IS SUBMITTED SUBJECT TO ERRORS, OMISSIONS, CHANGE OF PRICE, RENTAL OR OTHER CONDITIONS, WITHDRAWAL WITHOUT NOTICE AND TO ANY SPECIFIC CONDITIONS IMPOSED BY THE PROPERTY OWNER OR LESSOR.