

GLEN OAKS | QUEENS  
NEW YORK CITY

**254-05**

HILLSIDE AVENUE

CORNER OF LITTLE NECK  
PARKWAY & 255TH STREET

WRAPAROUND FRONTAGE 149+ FEET

GLEN OAKS | QUEENS  
NEW YORK CITY

# 254-05

HILLSIDE AVENUE

**POSSESSION: IMMEDIATE**  
Immediate - CVS Sublease  
Through 1/31/2027

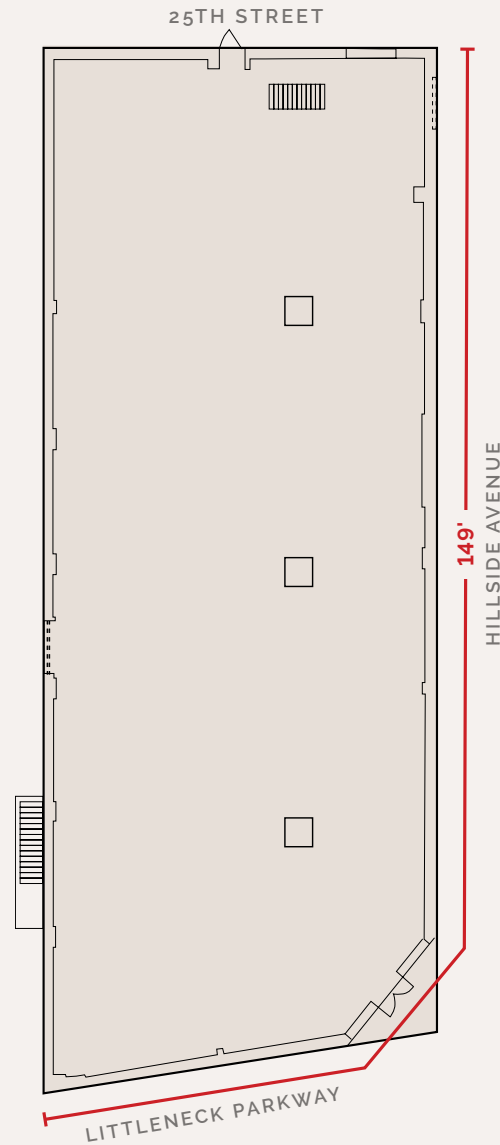
**STRONG VEHICULAR TRAFFIC**  
Hillside Avenue & Little Neck  
Parkway Over 40,000+ Vehicles  
Per Day

**LOCATED DIRECTLY IN FRONT  
OF PUBLIC TRANSIT**  
Limited Q36 on Little Neck  
Parkway

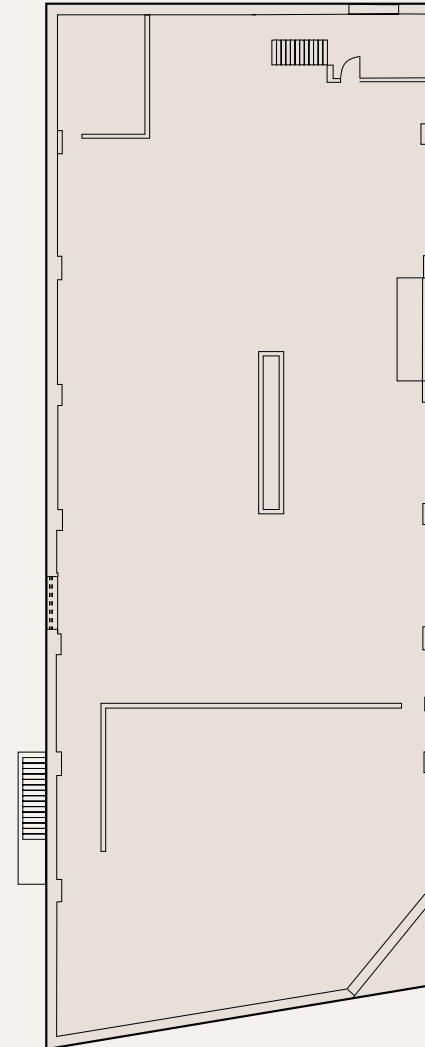
**PRIVATE PARKING**  
Gated entrances into lot with  
approx. 20 car parking spots

**NEIGHBORS**  
7-Eleven • Dunkin' • AT&T  
Baskin-Robins • Subway  
Usha Foods • Patel Brothers  
Market • Premium Super Market  
PM Pediatric Urgent Care  
Capital One

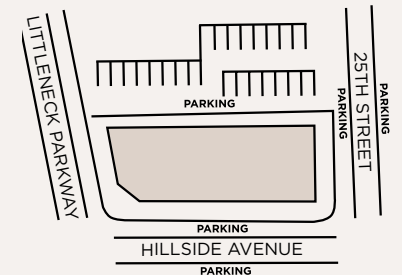
## GROUND FLOOR 9,168 SF



## LOWER LEVEL 8,468 SF



## SITE PLAN LOT SIZE: .47 AC



GLEN OAKS | QUEENS  
NEW YORK CITY

**254-05**  
HILLSIDE AVENUE



CORNER STOREFRONT



PARKING



GLEN OAKS | QUEENS  
NEW YORK CITY

**254-05**

HILLSIDE AVENUE

CORNER OF LITTLE NECK  
PARKWAY & 255TH STREET

For more information, please contact

**STEVEN SOUTENDIJK**

212 713 6845

[steven.soutendijk@cushwake.com](mailto:steven.soutendijk@cushwake.com)

**SEAN MORAN**

212 841 7668

[sean.moran@cushwake.com](mailto:sean.moran@cushwake.com)

**PATRICK O'ROURKE**

212 660 7777

[patrick.orourke@cushwake.com](mailto:patrick.orourke@cushwake.com)

**CATHERINE MERCK**

212 698 2621

[catherine.merck@cushwake.com](mailto:catherine.merck@cushwake.com)

