

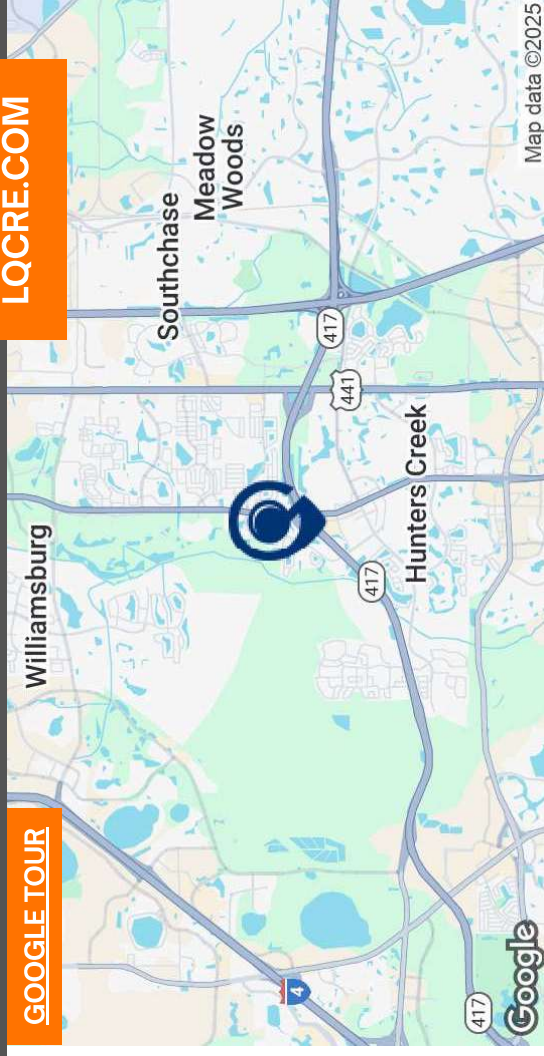
THE VILLAGE AT HUNTER'S CREEK

13526 Village Park Dr | Orlando, FL 32837

Retail For Lease



GOOGLE TOUR



LQ Commercial
REAL ESTATE SERVICES

LQCRE.COM



CALL FOR
RATES



1,604 SF
SIZE



63,000 CPD
N JOHN YOUNG PKWY

- 1,604 SF retail for lease in the heart of Hunter's Creek, a thriving Orlando suburb
- Premier, Class A development with easy access to and from SR 417
- Frontage on S John Young Parkway (63,000 CPD)
- Surrounded by dense residential neighborhoods and a growing population

PROPERTIES.LQCRE.COM/VILLAGE-AT-HUNTERS-CREEK



5-MILE POPULATION

222,394



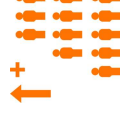
5-MILE INCOME

\$89,080



5-MILE EMPLOYEES

106,480



5-YEAR INCREASE

1.7%



LQ Commercial
REAL ESTATE SERVICES

500 Winderley Pl #104

Maitland, FL 32751

LQCRE.COM

Julia Sosa

Founding Principal - Orlando

D: 407.775.4358

C: 407.257.8246

jsosa@lqcre.com

Eva Royal

Principal, Senior Associate

D: 407.705.2217

C: 407.421.3532

eroyal@lqcre.com

Information obtained from owner(s) or other sources deemed reliable. We have no reason to doubt its accuracy, but cannot guarantee it. All properties subject to change or withdrawal without notice.

THE VILLAGE AT HUNTER'S CREEK

13526 Village Park Dr | Orlando, FL 32837

Retail For Lease



LQ Commercial
REAL ESTATE SERVICES

LQCRE.COM



LQ Commercial
REAL ESTATE SERVICES

500 Winderley Pl #104
Maitland, FL 32751

LQCRE.COM

Julia Sosa

Founding Principal - Orlando

D: 407.775.4358

C: 407.257.8246

jsosa@lqcre.com

Eva Royal

Principal, Senior Associate

D: 407.705.2217

C: 407.421.3532

eroyal@lqcre.com

Information obtained from owner(s) or other sources deemed reliable. We have no reason to doubt its accuracy, but cannot guarantee it. All properties subject to change or withdrawal without notice.

THE VILLAGE AT HUNTER'S CREEK

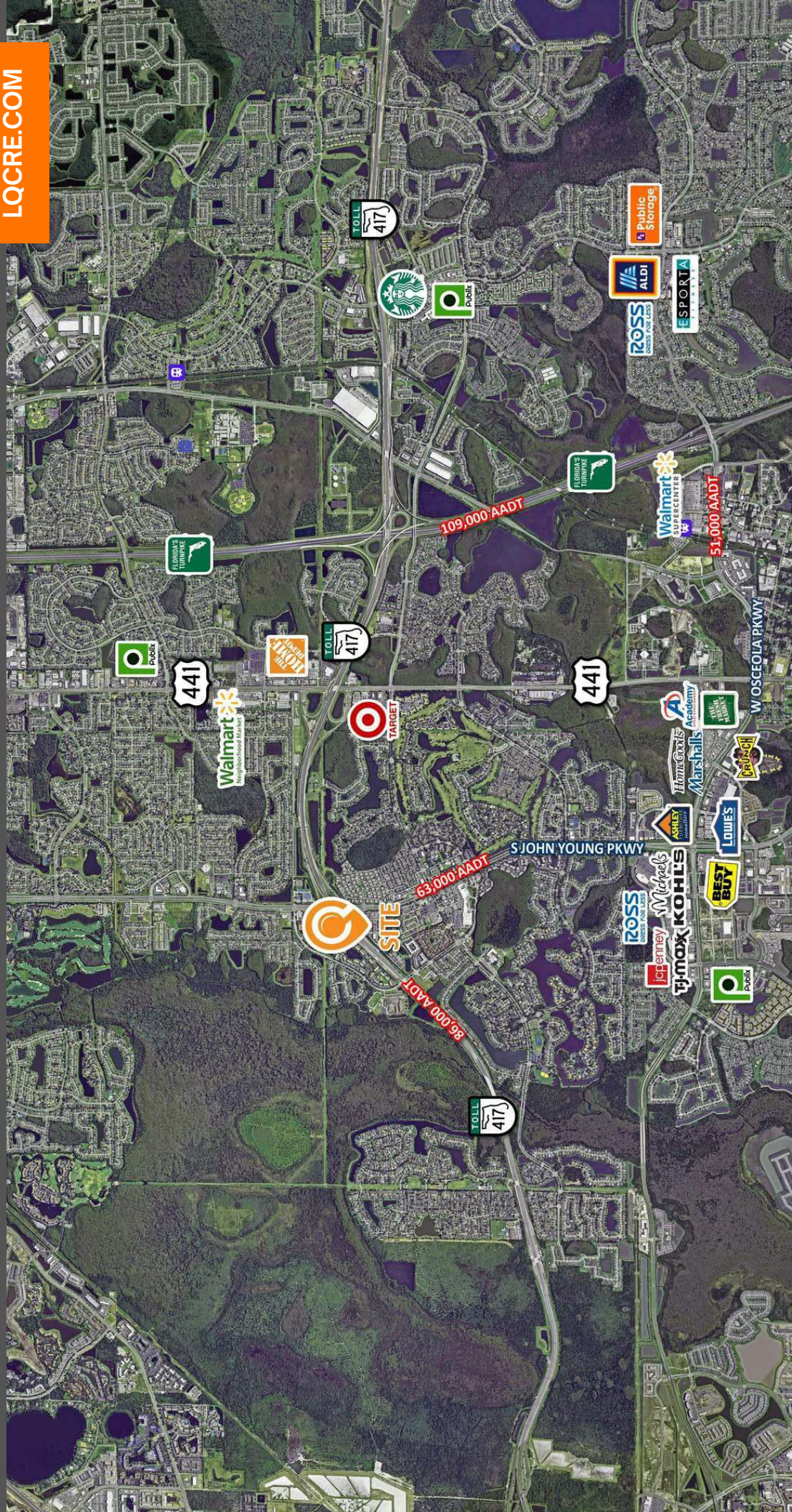
13526 Village Park Dr | Orlando, FL 32837

Retail For Lease



LQ Commercial
REAL ESTATE SERVICES

LQCRE.COM



LQ Commercial
REAL ESTATE SERVICES
500 Winderley Pl #104
Maitland, FL 32751
LQCRE.COM

Julia Sosa

Founding Principal - Orlando

D: 407.775.4358

C: 407.257.8246

jsosa@lqcre.com

Eva Royal

Principal, Senior Associate

D: 407.705.2217

C: 407.421.3532

eroyal@lqcre.com

Information obtained from owner(s) or other sources deemed reliable. We have no reason to doubt its accuracy, but cannot guarantee it. All properties subject to change or withdrawal without notice.

THE VILLAGE AT HUNTER'S CREEK

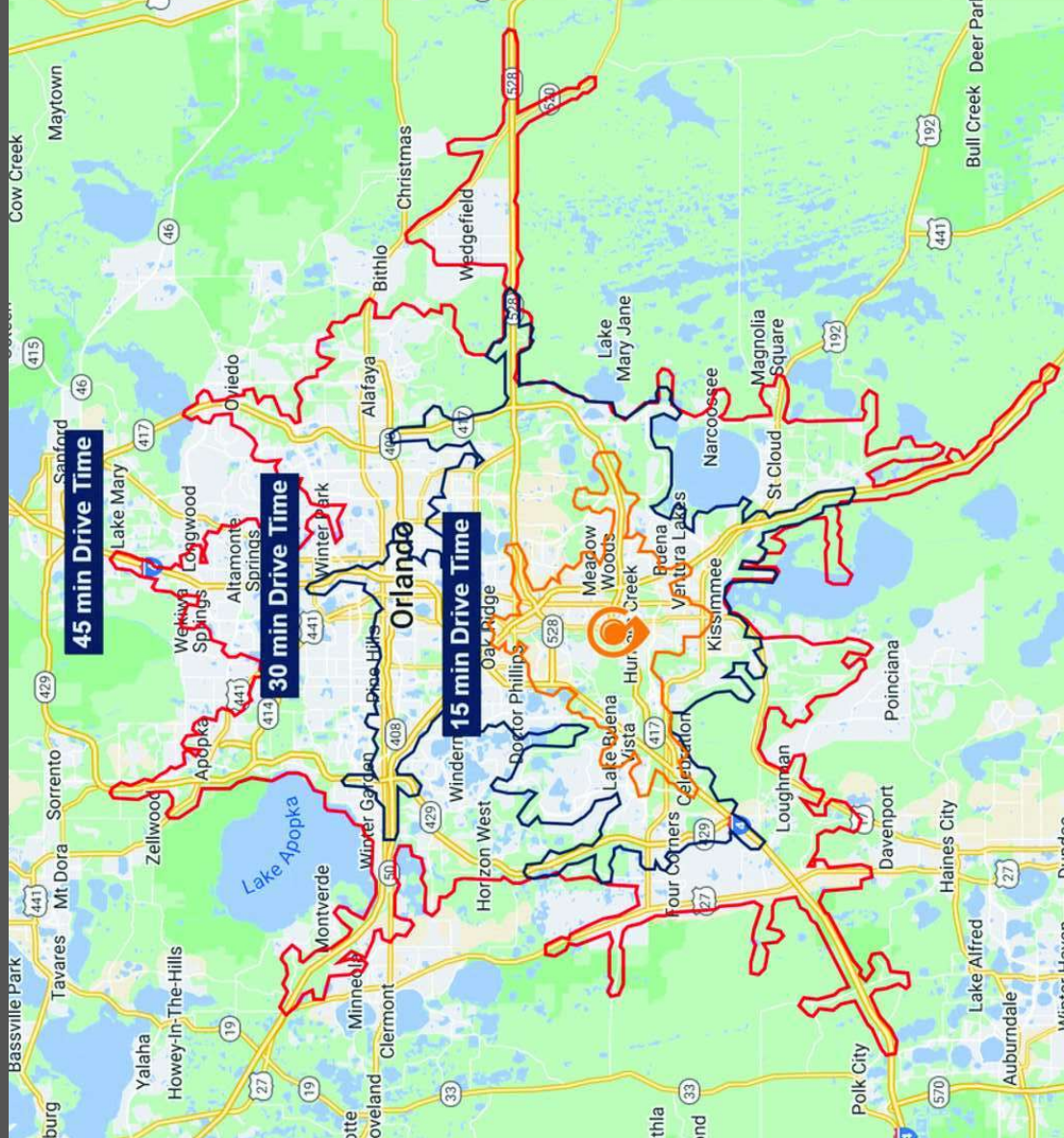
13526 Village Park Dr | Orlando, FL 32837

Retail For Lease



LQ Commercial
REAL ESTATE SERVICES

LQCRE.COM



DRIVE TIME DEMOGRAPHICS	15 MIN	30 MIN	45 MIN
Population	198,595	876,157	1.95 M
2029 Projected Population	217,194	974,530	2.15 M
Projected Annual Growth to 2029	1.9%	2.2%	2.1%
Historical Annual Growth 2010 to 2024	2.4%	2.7%	2.5%
Median Age	35.8	36.6	36.6
Households	72,037	331,056	735,632
Projected Annual Growth to 2029	18,599	98,374	203,705
Historical Annual Growth 2010 to 2024	16,351	66,209	114,771
White	38.5%	44.1%	47.3%
Black or African American	23.1%	21.9%	20.3%
Asian or Pacific Islander	5.3%	5.1%	5.3%
American Indian or Native Alaskan	0.3%	0.4%	0.4%
Other Races	32.9%	28.6%	26.8%
Hispanic	41.0%	36.8%	34.9%
Average Household Income	\$84,158	\$98,495	\$108,067
Median Household Income	\$74,067	\$77,186	\$82,456
Per Capita Income	\$30,592	\$37,291	\$40,909
Elementary (Grades 0 - 8)	4.8%	5.1%	4.6%
Some High School (Grades 9 - 11)	5.3%	5.6%	5.4%
High School Graduate	25.0%	25.2%	24.0%
Some College	17.2%	16.9%	17.1%
Associates Degree Only	11.0%	10.5%	11.1%
Bachelors Degree Only	25.1%	24.2%	24.8%
Graduate Degree	11.5%	12.5%	13.0%
Total Businesses	16,426	67,134	132,772
Total Employees	136,353	473,625	873,216



LQ Commercial
REAL ESTATE SERVICES
500 Winderley Pl #104
Maitland, FL 32751
LQCRE.COM

Julia Sosa
Founding Principal - Orlando
D: 407.775.4358
C: 407.257.8246
jsosa@lqcre.com

Eva Royal
Principal, Senior Associate
D: 407.705.2217
C: 407.421.3532
eroyal@lqcre.com

Information obtained from owner(s) or other sources deemed reliable. We have no reason to doubt its accuracy, but cannot guarantee it. All properties subject to change or withdrawal without notice.