

5600 POST ROAD

EAST GREENWICH, RHODE ISLAND

5600 POST ROAD

EAST GREENWICH, RHODE ISLAND

EXISTING STOREFRONTS



FOR MORE INFORMATION, CONTACT:

Peter Flynn • 401.273.6800 x141 • PFlynn@CarpionatoGroup.com

Joe Pierik • 401.273.6800 x126 • JPierik@CarpionatoGroup.com



LOCATION

Positioned within the affluent town of East Greenwich with very strong demographics. Estimated Household Incomes of \$138,515 within a 3-mile radius

SPACE

74,276 ± SF

NEARBY

Stop and Shop, Planet Fitness, Job Lot, Ace Hardware, Marshalls, Citizen's Bank, GNC, Riverhead Building Supply



5600 POST ROAD

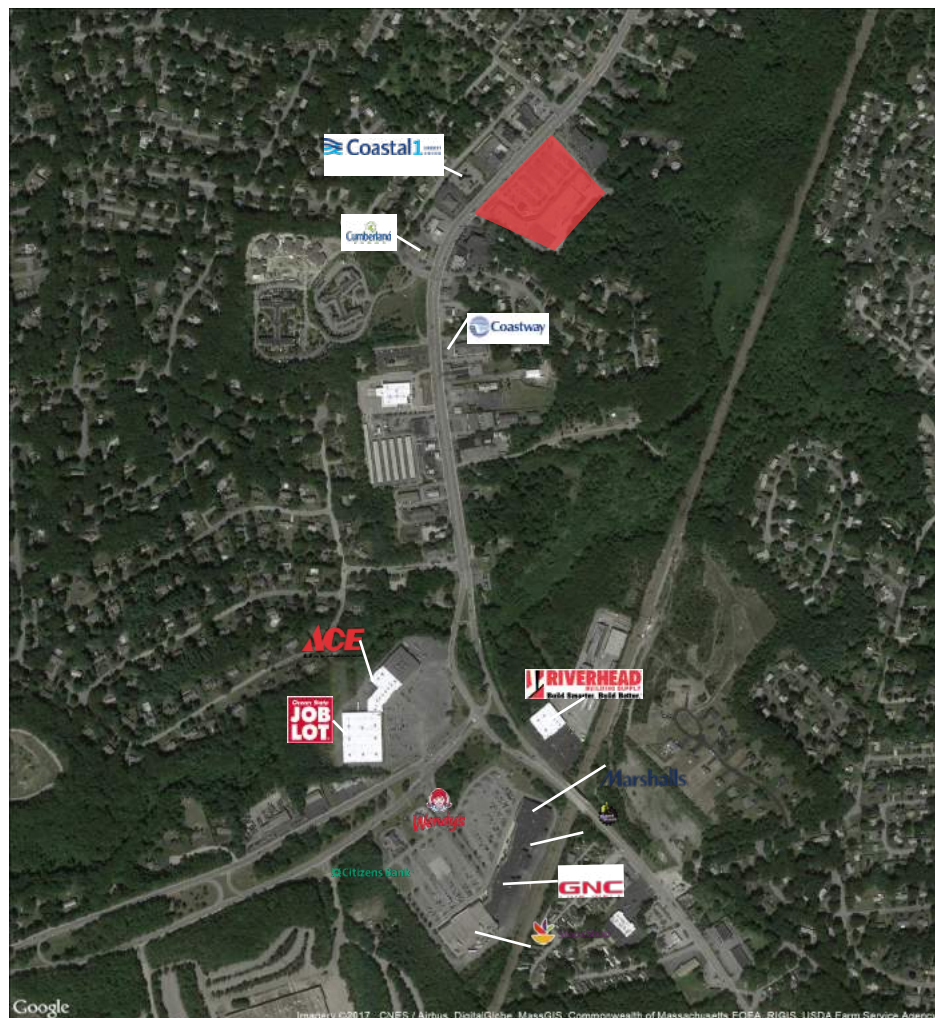
EAST GREENWICH, RHODE ISLAND

LOCATION & DEMOGRAPHICS

LAT/LON	GLA	PARKING
41.6413/-71.4664	74,276 SF	431
TRAFFIC COUNT		CARS/DAY
Post Road		21,000
Route 4		79,000

DEMOGRAPHICS 2022	1-MILE	3-MILE	5-MILE
Estimated Population	5,260	28,621	77,797
Estimated Average HH Income	\$125,426	\$126,259	\$108,582

TRADE MAP



TENANTS

	SQUARE FEET			SQUARE FEET
Available Retail A*	25,385 SF	181' x 140'	Siena	4,820 SF
Available Retail B	1,650 SF	20' x 82'-6"	Teddy Bearskins	2,948 SF
Available Retail C	1,643 SF	20' x 80'	T's Cafe	3,800 SF
Available Retail D	2,860 SF		Taste Buds Kitchen	1,985 SF
Fred Astaire	3,058 SF		UPS Store	2,908 SF
Clayground	1,940 SF		Wild Harvest	1,340 SF
Ferocious Eyes	2,040 SF		Ivory: A Bridal Boutique	1,400 SF
H&R Block	1,600 SF		Skein Yarn Shop	1,340 SF
Renegade Fitness	15,000 SF			

*Sub-dividable

■ SIGNED TENANT
 ■ AVAILABLE SPACE
 ■ PROPOSED

FOR MORE INFORMATION, CONTACT:

Peter Flynn • 401.273.6800 x141 • PFlynn@CarpionatoGroup.com

Joe Pierik • 401.273.6800 x126 • JPierik@CarpionatoGroup.com

1414 Atwood Avenue • Johnston, RI • 02919 • 401.273.6800 • www.CarpionatoGroup.com