

PERFECT FOR:
SALON - SPA - PHARMACY - PETCARE - REAL ESTATE OFFICE



Gotham
LONG ISLAND CITY
point

56-03 CENTER BOULEVARD
HUNTER'S POINT SOUTH | LONG ISLAND CITY

BRAND NEW RETAIL SPACE

located at the base of a
1,132-unit residential
development in Long Island
City (Fully Leased)

Ground Floor Retail

Sidewalk Cafe Available

Space A **LAST SPACE
AVAILABLE**
890 sf

Space B **LEASED**
(divisible) **PUEBLO COFFEE
ROASTERS**
2,560 sf *(Coming Soon)*

Ceiling Heights
14-17 feet

Possession
Immediate

Asking Rent
Upon Request



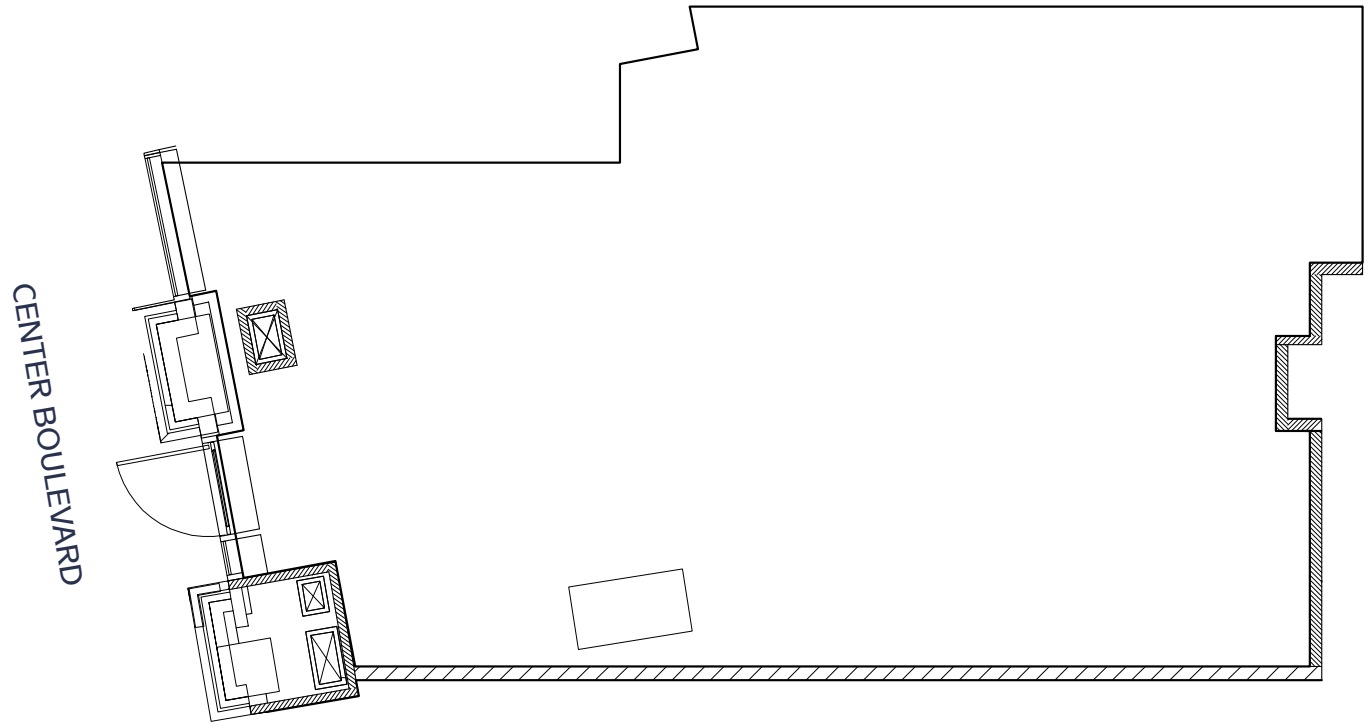
- Elevated waterfront location
- One block to Manhattan Ferry
- Stunning Manhattan Skyline views
- Directly across from Hunter's Point Park Overlook



SPACE A
890 sf

FRONTAGE
20 feet

CEILING
HEIGHTS
17 feet



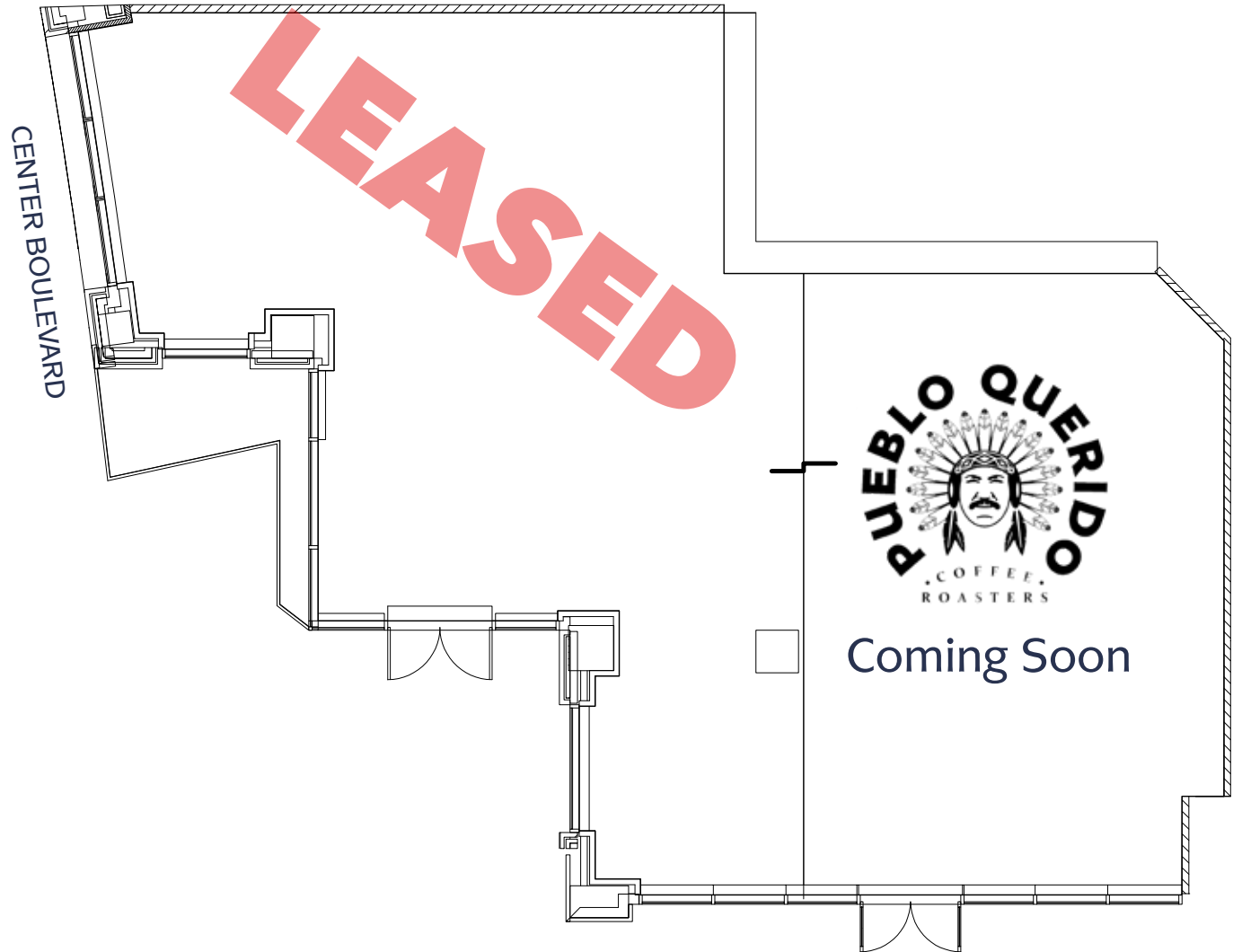


SPACE B
2,560 sf

FRONTAGE
100 feet

CEILING HEIGHTS
14 feet

Sidewalk Cafe
Available



57TH AVENUE

Space B



Gotham point

LONG ISLAND CITY

- 2 newly constructed towers directly on Hunter's Point South Park
- 1,132 units (fully-leased)
- **Evergreen Market** - Now Open
- iPark Garage
- Community Boathouse
- **Building Brilliance Daycare** - Now Open
- **Pueblo Querido Coffee Roasters** - Coming Soon
- **Beam Dental** - Coming Soon

HUNTER'S POINT SOUTH FERRY (1 BLOCK)

POINT PARK SOUTH SKYLINE OVERLOOK

HUNTER'S POINT SOUTH PARK

FUTURE DEVELOPMENT

RFP IN PROCESS

PS 384

PUBLIC PARK

1,194 UNITS

MTA Long Island Rail Road

1,387 UNITS

STEPPING STONE - NOW OPEN
 SUNDAYS NAIL SALON - NOW OPEN
 FER ASIAN RESTAURANT - NOW OPEN
 JOJO & CO PET CLUB - NOW OPEN
 BREATHE PILATES - COMING SOON

Center Blvd

56th Ave

57th Ave

2nd St



FOR MORE INFORMATION
BRAD SCHWARZ
Executive Managing Director | Principal
212.776.1290
bschwarz@lee-associates.com

GOTHAM
DEVELOPER OWNER MANAGER

**LEE &
ASSOCIATES**
COMMERCIAL REAL ESTATE SERVICES

All information supplied is from sources deemed reliable and is furnished subject to errors, omissions, modifications, removal of the listing from sale or lease, and to any listing conditions, including the rates and manner of payment of commissions for particular offerings imposed by principals or agreed by this Company, the terms of which are available to principals or duly licensed brokers. Any square footage dimensions set forth are approximate.