

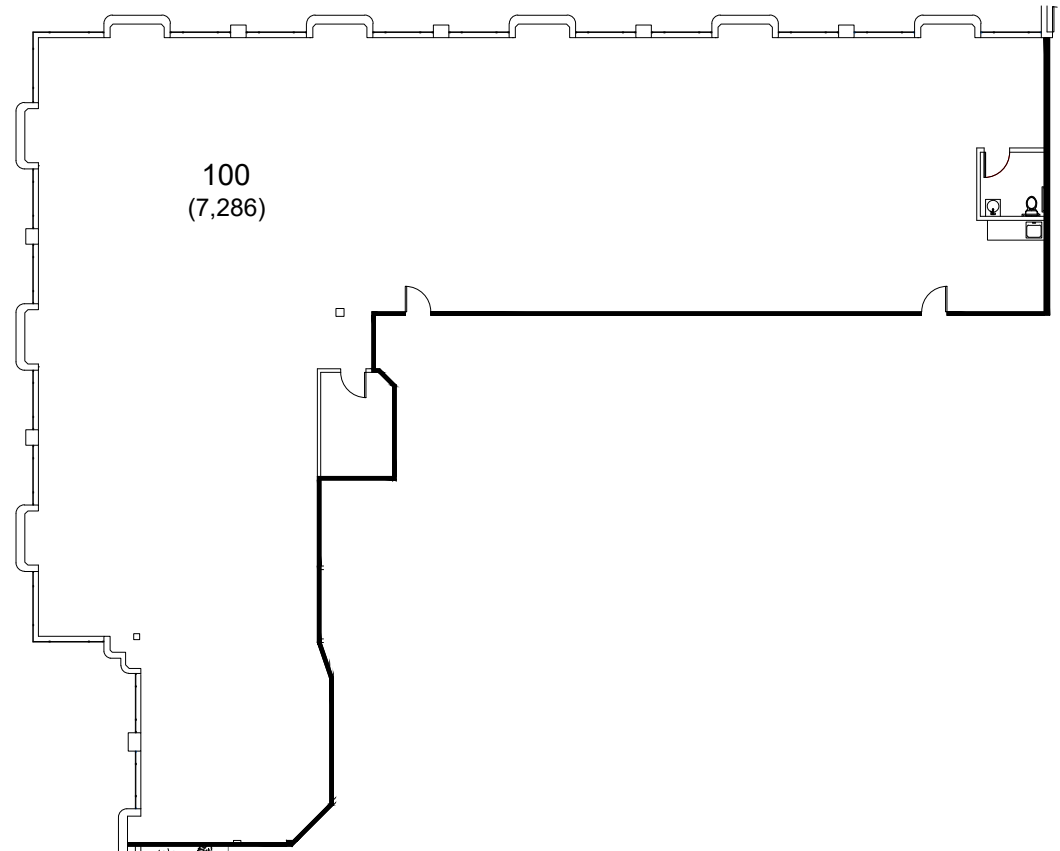
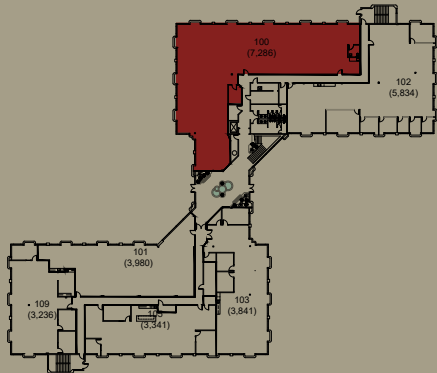


## 1<sup>st</sup> Floor

Suite 100 / ±7,286 SF

- Private Office
- Restroom
- Large Open Space
- Extensive In-Ground Plumbing
- Available Now

### KEY PLAN



### CONTACT US

Chris Blom | Executive Vice President | +1 650 480 2057 | [chris.blom@jll.com](mailto:chris.blom@jll.com) | LIC #02031205  
Ben Paul | Vice Chairman | +1 650 401 2123 | [ben.paul@cushwake.com](mailto:ben.paul@cushwake.com) | LIC #01210872

[BACK TO AVAILABILITES](#)

