

FOR SUBLEASE

±1,507 SF INDUSTRIAL & OFFICE SUITE

22603

LA PALMA AVE | SUITE 300

YORBA LINDA



EXCLUSIVE AGENT



Nick Tezak

PRINCIPAL

C: 657.348.4335

nitezak@lee-associates.com

CA DRE #02101474

22603 LA PALMA AVE | SUITE 300



PROPERTY HIGHLIGHTS

- ±1,507 SF industrial & office suite
- Sublease Through May 31, 2028
- Close proximity to numerous retail amenities.
- Direct access to 91 freeway
- Abundant parking
- Professionally managed business park.
- Rent Negotiable
- Reception
- Window Office
- Restroom
- Coffee Bar
- Ground-Level Truck Door



22603 LA PALMA AVE | SUITE 300



EXCLUSIVE AGENT



Nick Tezak

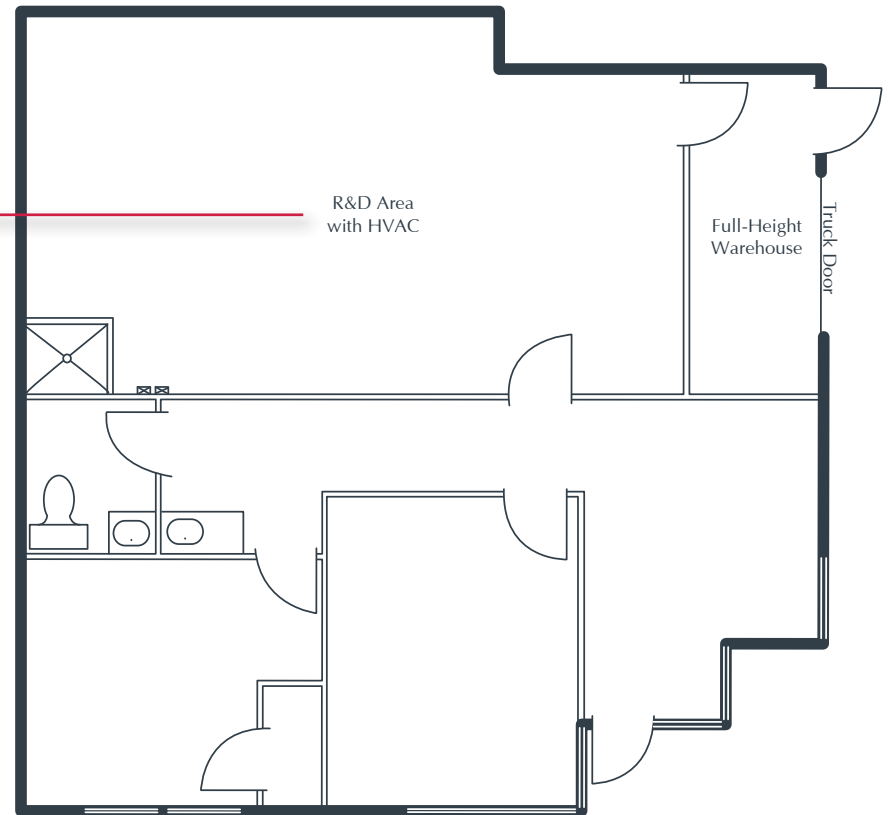
PRINCIPAL

C: 657.348.4335

ntezak@lee-associates.com

CA DRE #02101474

22603 LA PALMA AVE | SUITE 300



22603 LA PALMA AVE | SUITE 300

Yorba Linda



E. La Palma Ave

S. Weir Canyon Rd



Anaheim Hills



EXCLUSIVE AGENT



Nick Tezak
PRINCIPAL
C: 657.348.4335
ntezak@lee-associates.com
CA DRE #02101474