

# RETAIL FOR LEASE



8820  
BEVERLY  
BOULEVARD

**Carine Mamann**

Vice Chairman

lic. 01734150

[carine.mamann@cushwake.com](mailto:carine.mamann@cushwake.com)

T. 310 595 2235

**Kazuko Morgan**

Executive Vice Chairman

lic. 01070005

[kazuko.morgan@cushwake.com](mailto:kazuko.morgan@cushwake.com)

T. 310 595 2235



# PROPERTY DETAILS



## USE

Retail or Showroom



## RENT

Available upon Request



## SIZE

± 3,681 SF

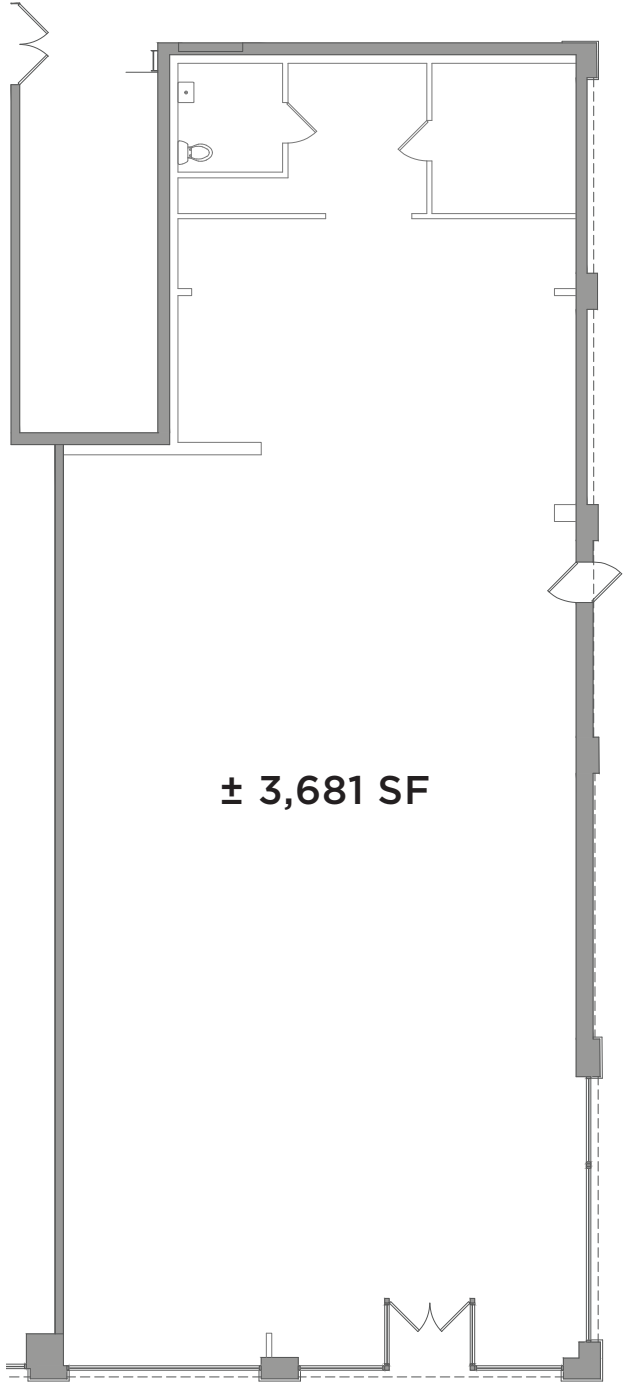


## CEILING HEIGHTS

14'



# FLOORPLAN



BEVERLY BOULEVARD

# INTERIOR

