



BIG LOTS

El Dorado Plaza
4429 Cleveland Avenue
Fort Myers, FL

Anchor Box For Lease
Former Big Lots **31,360 SF**

Danielle Robinson
Senior Vice President
Retail Services
+1 239 895 1052
danielle.robinson@colliers.com

Property Highlights



- 176,898 SF shopping plaza anchored by **El Dorado Furniture, Redline Athletics and Hooters**
- Located at the signalized intersection of Colonial Boulevard and US-41/ Cleveland Avenue, 2 major roadways in Fort Myers
- Adjacent to the Edison Mall
- **31,360 SF anchor box**
- **1,794 SF and 1,872 SF units available**
- 8,317 SF stand alone outparcel on Colonial Boulevard also available



Rates: \$15.00/SF Anchor Box
 \$25.00/SF Inline
 NNN \$5.18/SF

Outparcel: Inquire for rates

Availability

- Unit 100: 31,360 SF anchor box

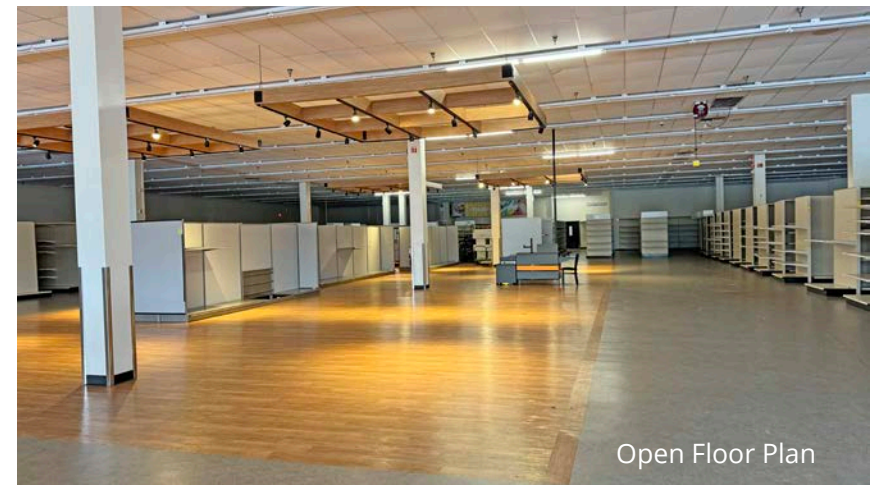
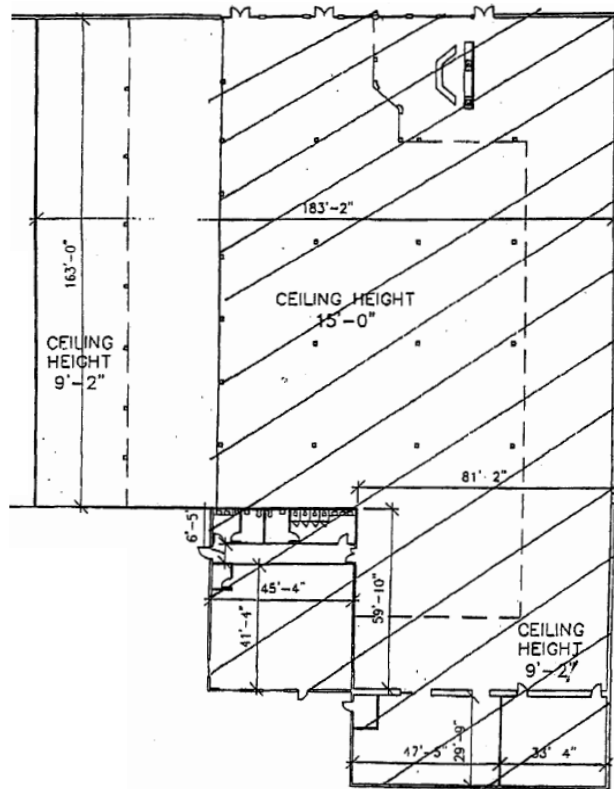


Tenant Roster

4429-100	Available	31,360 SF
4429-110	Concentra Health Services	9,381 SF
4429-120	Redline Athletics	8,248 SF
4429-130	El Dorado Furniture	63,694 SF
4429-140	Candy Wonderland	7,233 SF
4429-150	Dogtopia of SWFL	6,664 SF
4429-170	Ginza Asian Cuisine	6,457 SF
4429-205	Envy	882 SF
4429-210	Sylvana Hair Salon	1,910 SF
4429-220	Miracle Ear	1,011 SF
4429-230-250	Vicky's Bakery	3,213 SF
4429-260	Available Outparcel	8,317 SF
4329-601	Iguana Mia	5,302 SF
4329-521	Available	1,872 SF
4329-501	China Buffet	4,329 SF
4329-401	Society Hair Salon	1,178 SF
4329-301	Aquarium Reef Center	1,880 SF
4329-250	Affordable Dentures	2,184 SF
4329-201	Available	1,794 SF
4329-101	Oceans Nail Salon	1,978 SF
4411	Hooters	3,676 SF
4427	Metro PCS	2,800 SF
4455 A	Optical Outlets	3,000 SF
4455 B	Vista Surfaces	3,480 SF
4455 C	Check Cashing Store	1,120 SF
2035 A-B	Office	3,000 SF

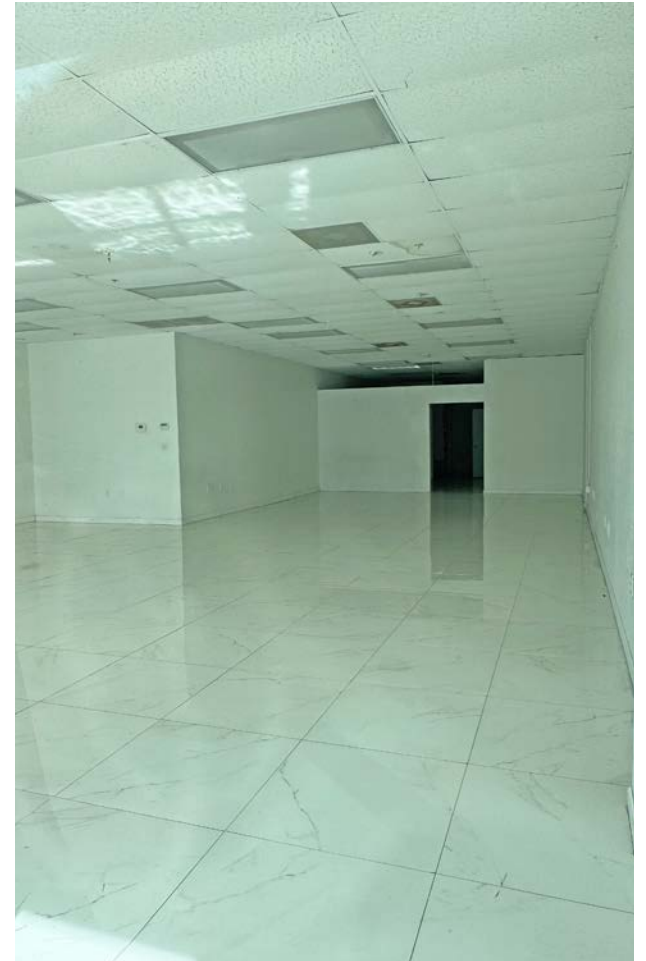
Anchor Box

- 31,360 SF
- End cap
- Former Big Lots
- Move in ready condition
- 2 Clearances:
 - 13 FT 9" floor to ceiling tile
 - 17 FT 10" floor to joist
- Truck well with 2 loading docks



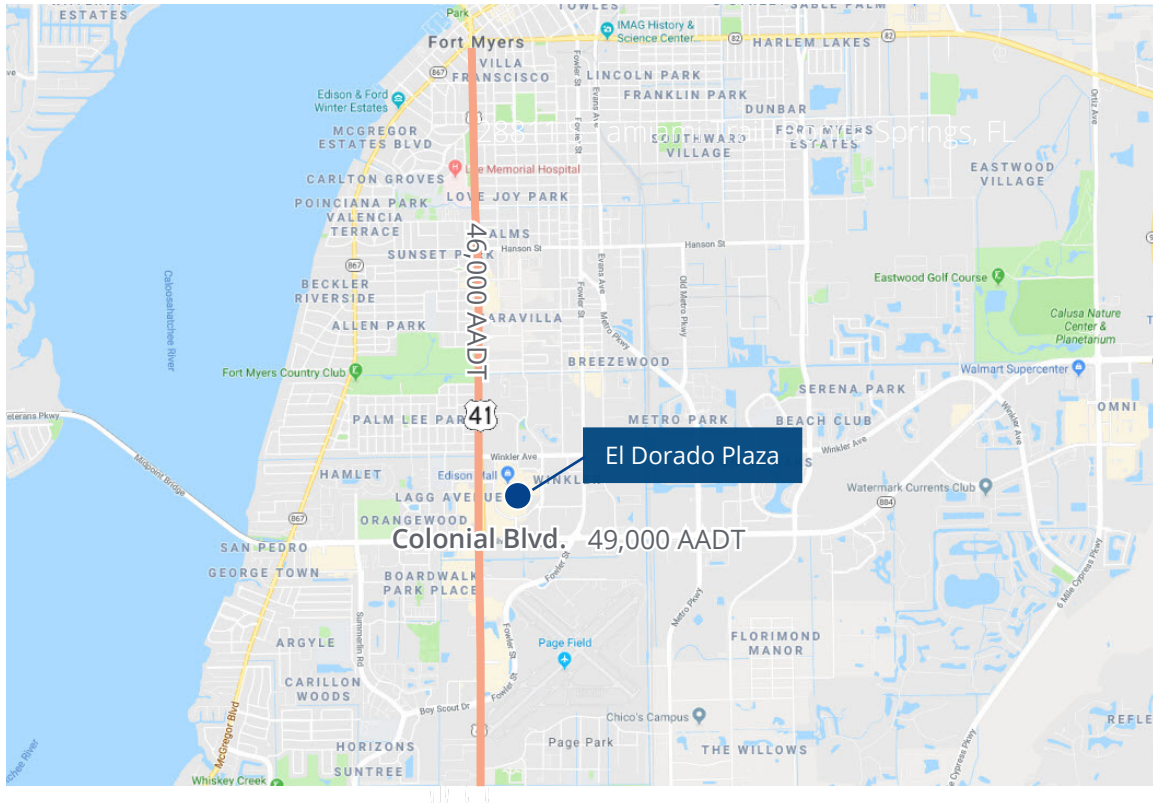
4429 Cleveland Avenue, Fort Myers, FL

Unit 521- 1,872 SF



Additional Data

4429 Cleveland Avenue, Fort Myers, FL



Demographics



Daytime Population

1-Mile: 17,847
3-Mile: 101,122
5-Mile: 218,534



Population Growth Rate

(2025-30)
1-Mile: 2.1%
3-Mile: 1.5%
5-Mile: 1.4%



Average HH Income

1-Mile: \$83,796
3-Mile: \$94,323
5-Mile: \$98,998



Households

1-Mile: 4,778
3-Mile: 30,932
5-Mile: 76,561



Median Age

1-Mile: 39.6
3-Mile: 41.1
5-Mile: 46.8



Traffic - AADT
US 41: 46,000
Colonial: 49,000



Accelerating success.

12800 University Drive | Suite 400
Fort Myers, FL 33907
P: +1 239 418 0300
colliers.com

Dannielle Robinson

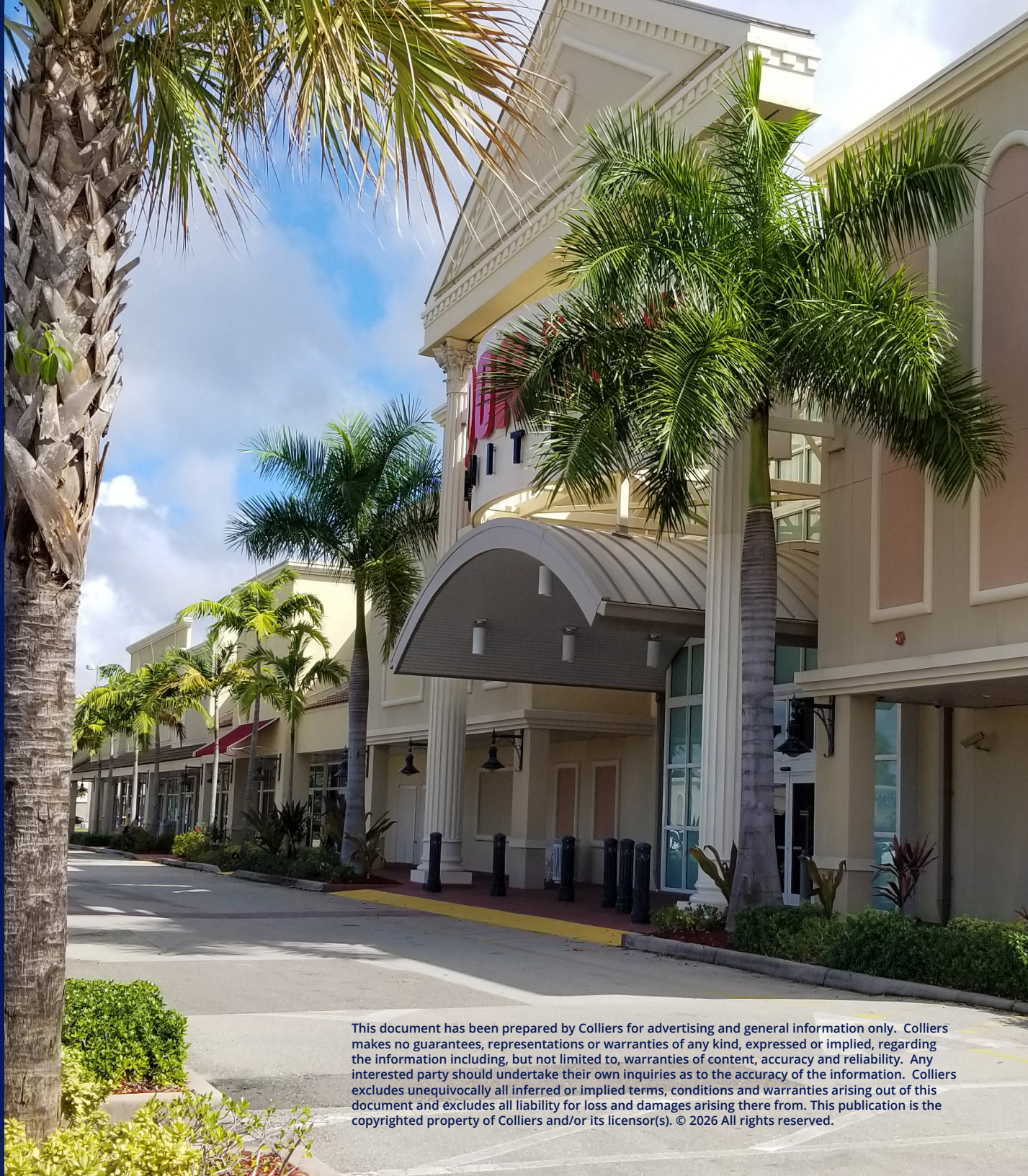
Senior Vice President | Retail Services
+1 239 895 1052
dannielle.robinson@colliers.com
Colliers Top 15 West & Central FL Broker (2025)

Fabienne Porter

Senior Client Service Specialist
+1 727 450 6961
fabienne.porter@colliers.com



View All Listings



This document has been prepared by Colliers for advertising and general information only. Colliers makes no guarantees, representations or warranties of any kind, expressed or implied, regarding the information including, but not limited to, warranties of content, accuracy and reliability. Any interested party should undertake their own inquiries as to the accuracy of the information. Colliers excludes unequivocally all inferred or implied terms, conditions and warranties arising out of this document and excludes all liability for loss and damages arising there from. This publication is the copyrighted property of Colliers and/or its licensor(s). © 2026 All rights reserved.