

For Lease

±40,088 SF

1201 South Campbell Avenue

Chicago, IL 60608

One Oakbrook Terrace
Suite 400
Oakbrook Terrace, Illinois 60181
+1 630 932 1234

hiffman.com

BUILDING SIZE:	±40,088 SF
AVAILABLE:	±34,656 SF (warehouse) ±5,432 SF (2-story office)
CLEAR HEIGHT:	22' clear
LOADING:	2 oversized drive-in doors (14'H x 20'W)
PARKING:	Ample street parking
LEASE RATE:	\$12.00 PSF semi-gross
CONSTRUCTION:	Masonry
ZONING:	PMD 7
SPRINKLER:	Yes
POWER:	3-Phase (240 Volts)

HIGHLIGHTS:

- Heated
- Racking
- Centrally located with easy access to Western & Ogden Avenues, Tri Taylor and IL Medical District
- Outdoor parking and storage available for additional cost
- Excellent access to I-90, I-290 & I-55



KITCHEN/
DINING
AREA

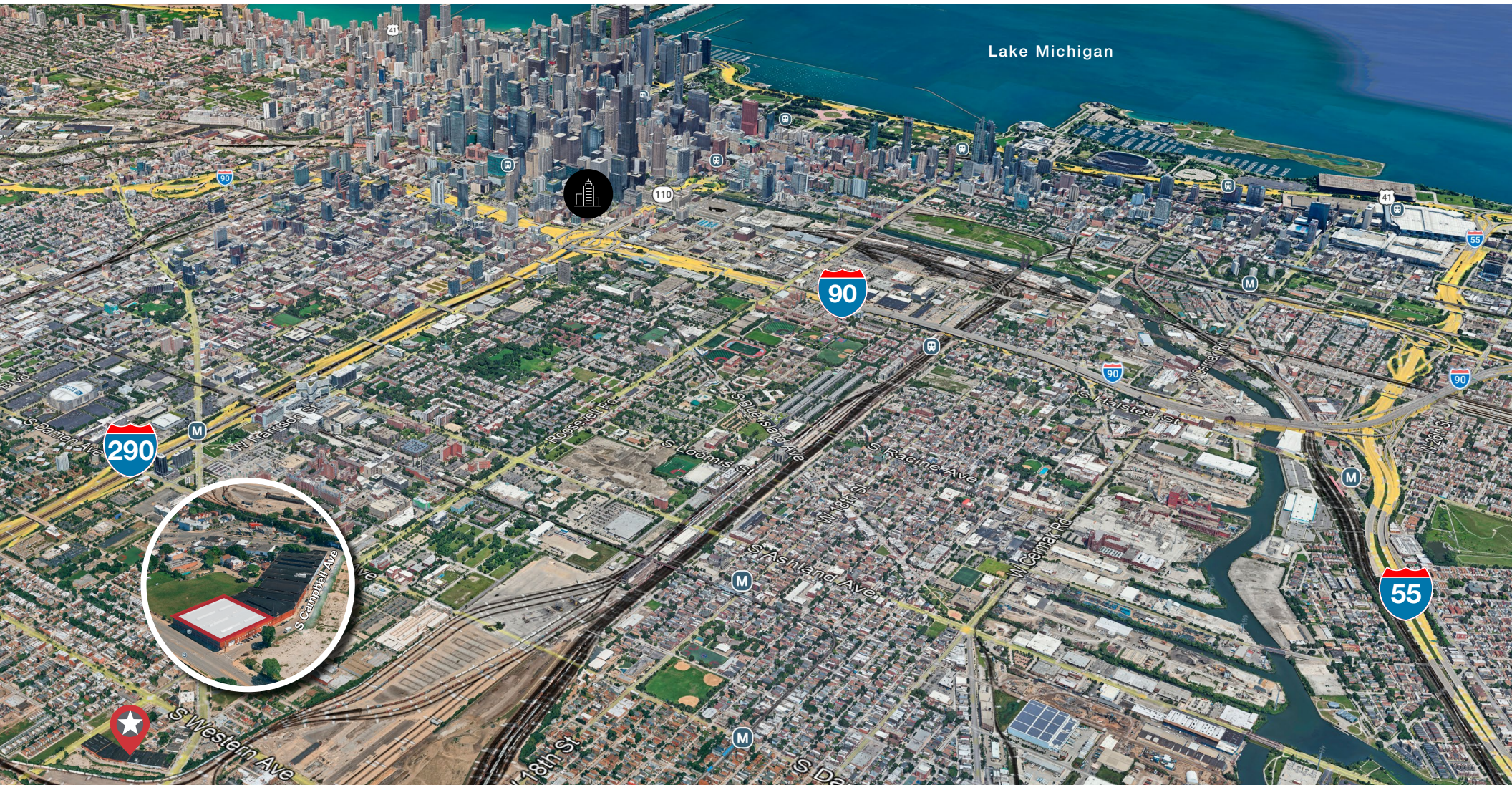


BARRELL
TRUSS ROOF

Contact

Doug Altenberger
630 693 0699
daltenberger@hiffman.com

NAIHiffman

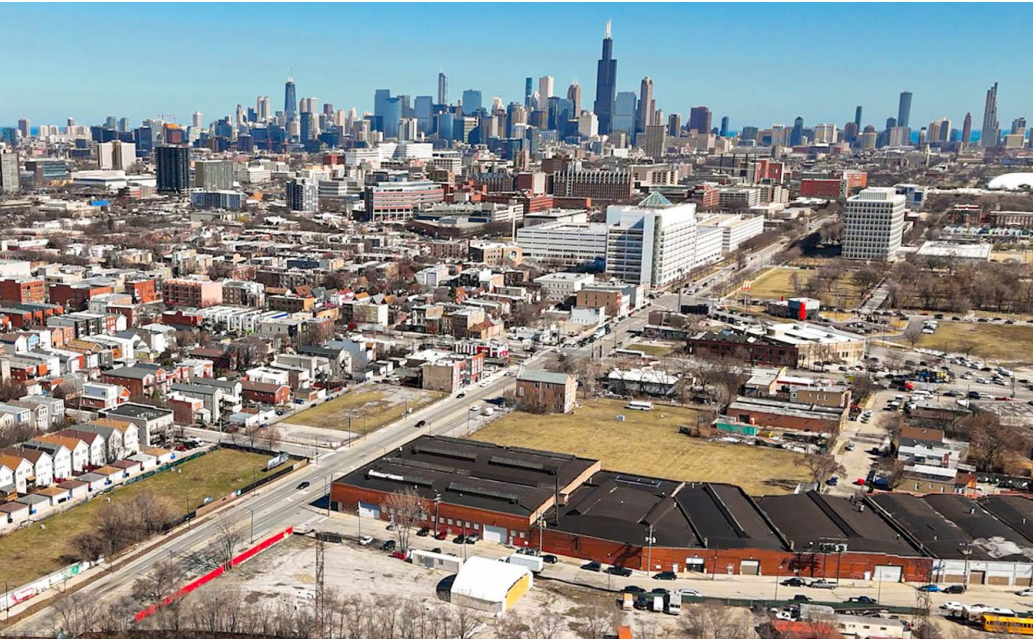
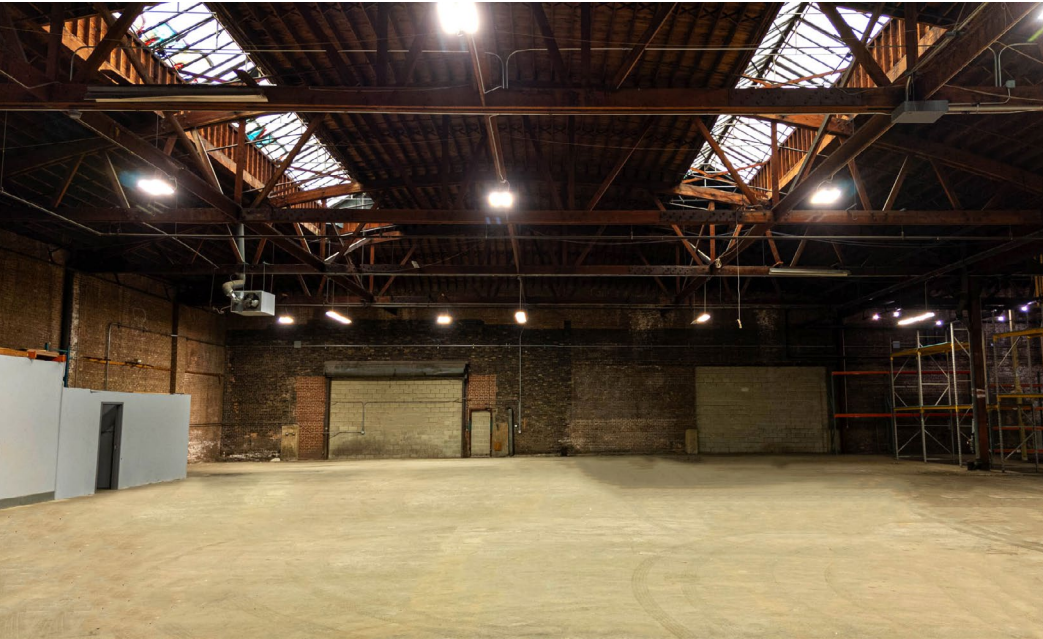


Contact


Doug Altenberger
630 693 0699
daltenberger@hiffman.com


One Oakbrook Terrace
Suite 400
Oakbrook Terrace, Illinois 60181
+1 630 932 1234

hiffman.com

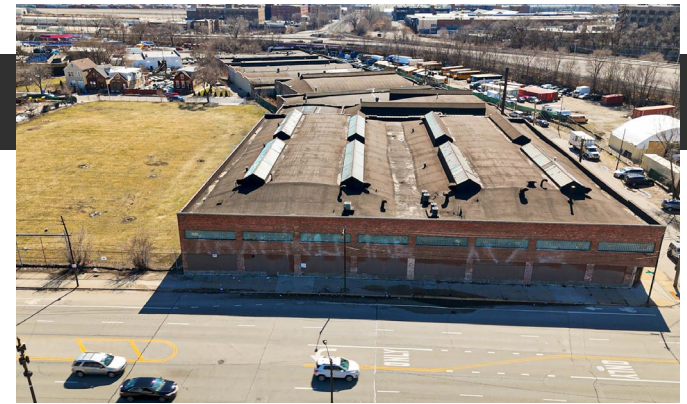


KEY DISTANCES

 0.8 MILES TO I-290 VIA S WESTERN AVE

 ±2.3 MILES TO I-55 VIA S WESTERN AVE

 2.2 MILES TO I-90 VIA I-290



LOCATION MAP

