

572 1ST AVENUE, N.

SAINT PETERSBURG, FL 33701



OFFERING SUMMARY

Lease Rate:	\$21.00 SF/yr (NNN)
Building Size:	6,000 SF
Available SF:	1,168 SF
Year Built:	1956
Market:	Tampa Bay
Submarket:	St. Petersburg

PROPERTY OVERVIEW

Rare opportunity! Retail space available on the 500 Block of 1st Avenue North. This space is located on ground level with retail-esque storefront, and just doors away from Radiant Wellness, Hair on Central, St. Petersburg Brewing, Zaa boutique, Twig boutique, Book + Bottle and across the street from the Pinellas County Courthouse and Clerk of Court. 572 1st Avenue N. is close to Mirror Lake, and is surrounded by new residential developments coming on-line in the near future including The Residences at 400 Central Ave the tallest tower in St. Pete. Come join one of the hottest areas in the heart of Downtown St. Pete!

PROPERTY HIGHLIGHTS

- Prime location in the heart of downtown St. Petersburg
- Located in-line with other office, retail & hospitality
- Excellent pedestrian traffic
- Lease rate does not include utilities, property expenses or building services



JASON SPITZER - COMMERCIAL

Each office independently owned and operated

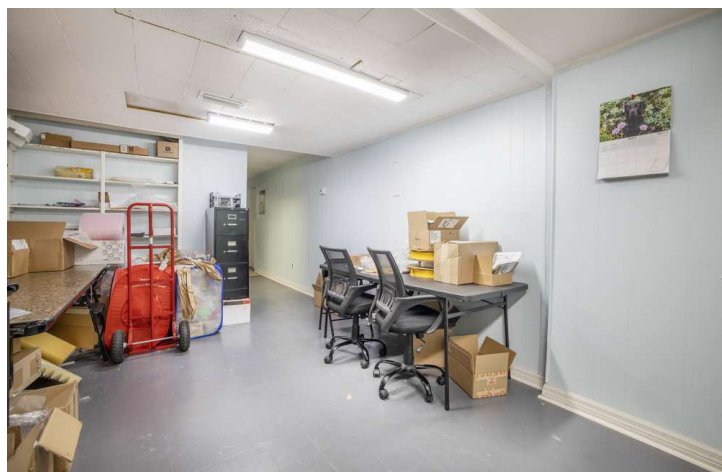
JASON SPITZER, JD
 Commercial Real Estate Advisor
 727.336.0465
 info@spitzerrutland.com

150 2nd Avenue North, Suite 100, St Petersburg, FL 33701

All information contained herein is deemed reliable but not guaranteed. Each office independently owned and operated

572 1ST AVENUE, N.

SAINT PETERSBURG, FL 33701



JASON SPITZER - COMMERCIAL
Each office independently owned and operated

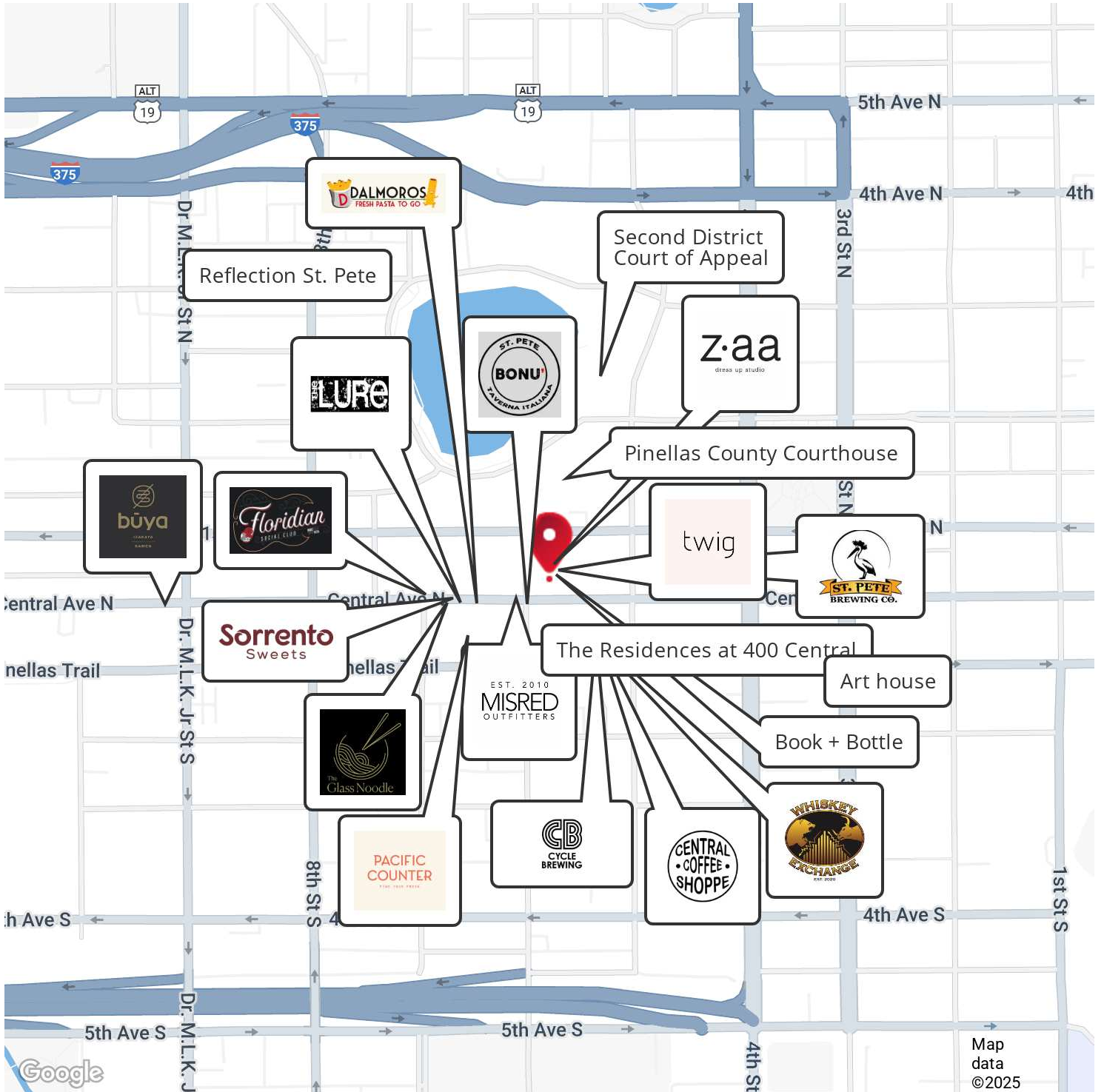
JASON SPITZER, JD
Commercial Real Estate Advisor
727.336.0465
info@spitzerrutland.com

150 2nd Avenue North, Suite 100, St Petersburg, FL 33701

All information contained herein is deemed reliable but not guaranteed. Each office independently owned and operated

572 1ST AVENUE, N.

SAINT PETERSBURG, FL 33701



JASON SPITZER - COMMERCIAL
 Each office independently owned and operated

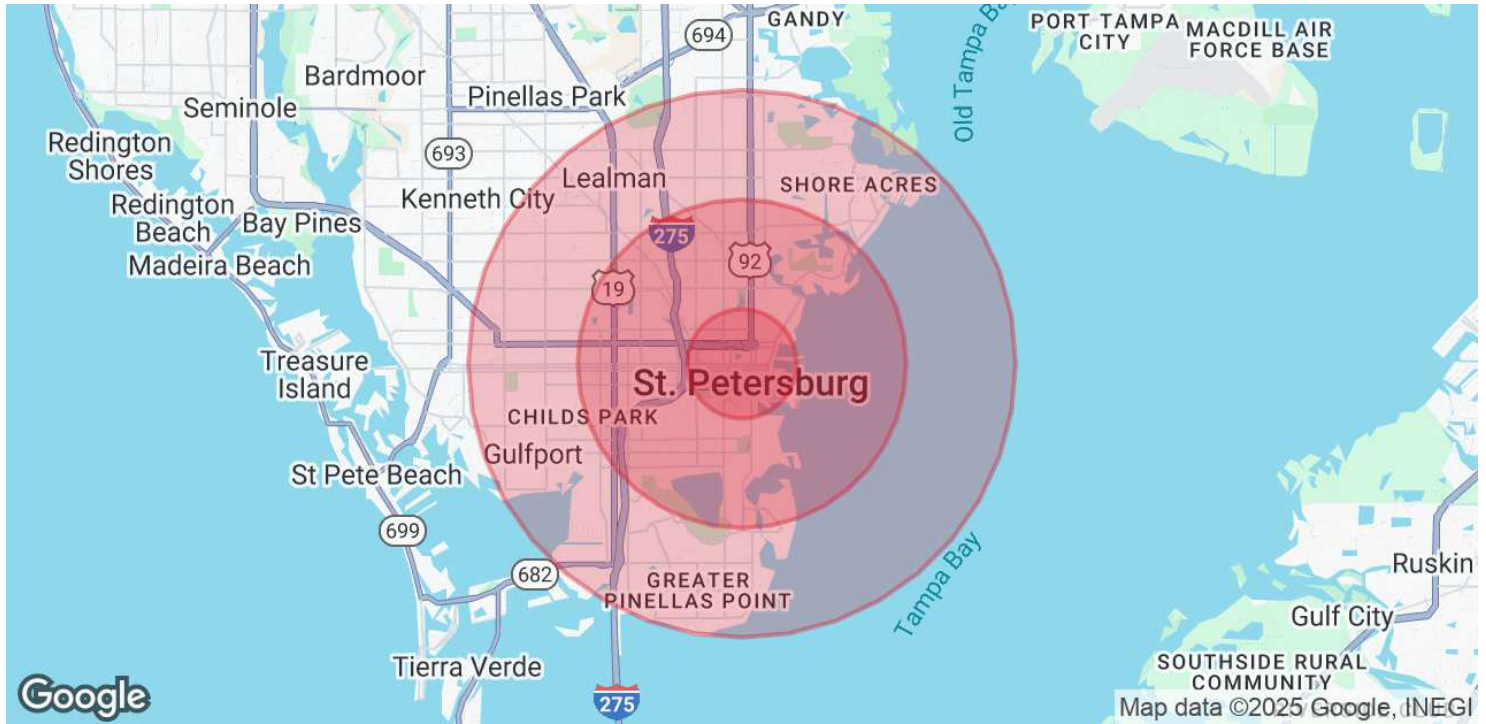
JASON SPITZER, JD
 Commercial Real Estate Advisor
 727.336.0465
 info@spitzerrutland.com

150 2nd Avenue North, Suite 100, St Petersburg, FL 33701

All information contained herein is deemed reliable but not guaranteed. Each office independently owned and operated

572 1ST AVENUE, N.

SAINT PETERSBURG, FL 33701



POPULATION

	1 MILE	3 MILES	5 MILES
Total Population	10,030	85,307	216,700
Average Age	47.5	40.6	40.9
Average Age (Male)	45.2	39.0	39.2
Average Age (Female)	48.1	41.3	41.9

HOUSEHOLDS & INCOME

	1 MILE	3 MILES	5 MILES
Total Households	5,933	37,805	92,243
# of Persons per HH	1.7	2.3	2.3
Average HH Income	\$46,210	\$54,101	\$55,420
Average House Value	\$285,363	\$233,602	\$220,700

* Demographic data derived from 2020 ACS - US Census



JASON SPITZER - COMMERCIAL

Each office independently owned and operated

JASON SPITZER, JD
Commercial Real Estate Advisor
727.336.0465
info@spitzerrutland.com

150 2nd Avenue North, Suite 100, St Petersburg, FL 33701

All information contained herein is deemed reliable but not guaranteed. Each office independently owned and operated