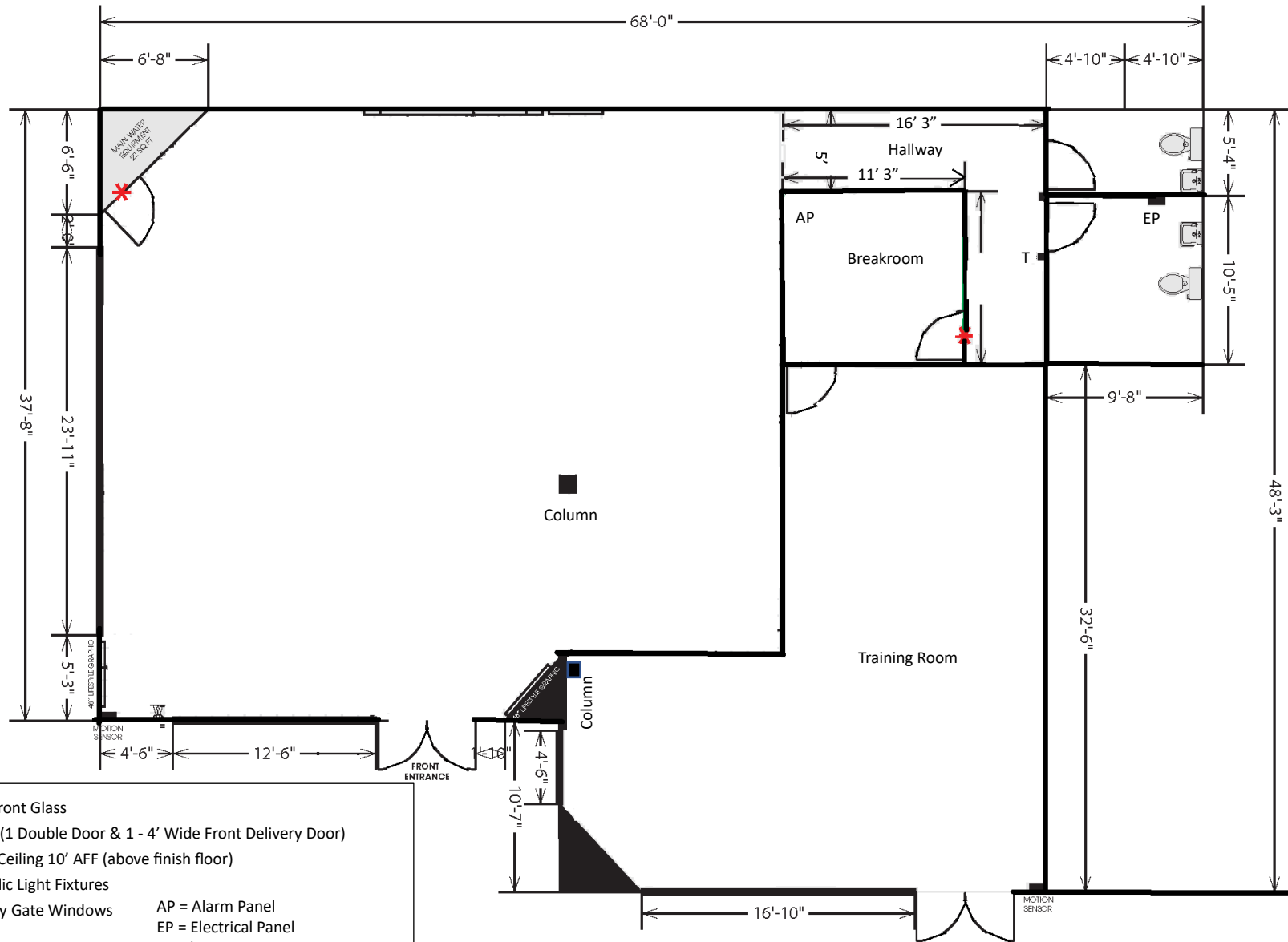


BLOSSOM HILL SHOPPING CENTER
1080 Blossom Hill Road, Suite A | San Jose, CA 95123
± 2,825 Square Feet (± 68' W x 48' D)



Rev. 06/01/2023

- Full Height Storefront Glass
 - 2 Entrance Doors (1 Double Door & 1 - 4' Wide Front Delivery Door)
 - 100% Drop T-Bar Ceiling 10' AFF (above finish floor)
 - Upgraded Parabolic Light Fixtures
 - Roll Down Security Gate Windows
 - 2 ADA Restrooms
 - 19-Gallon Electric Hot Water Heater
 - Upgraded Smooth Walls
 - Mop Sink Closet
- AP = Alarm Panel
 EP = Electrical Panel
 T = Thermostat
 *Security Key Pad Lock

© 2023 Biagini Properties, Inc. All rights reserved.



333 W. El Camino Real, Suite 240
 Sunnyvale, CA 94087-1969
 (408) 331-2300 Telephone
 (408) 331-2301 Facsimile
 www.BiaginiProperties.com

All dimensions are approximate only. The information contained herein has been given to us by the owner of the property or other sources we deem reliable. We have no reason to doubt its accuracy, but we do not guarantee it. All information should be verified prior to purchase or lease.