

SABAL PALM PLAZA



900-3,780 SF Retail Spaces Available

- Sabal Palm Plaza is located at U.S. 1 and Virginia Avenue in Fort Pierce, Florida, one of St. Lucie County's busiest intersections
- Convenient and direct access to the Florida Turnpike and Interstate-95
- Completely redeveloped in 2016, including an upgraded parking plan, enhanced landscaping as well as new roofing in 2017
- Great visibility and access to South Federal Hwy

Come join our family of national retailers:

Publix, Staples, Beall's Outlet, Big Lots, Touchstar Cinemas, T-Mobile, Wendy's, Goodwill, Bank of America, Rainbow, Chase Bank, GNC, Citi Trends, Freedom Health, Wingstop, H&R Block & more



<u>Demographics</u>	<u>1-Mile</u>	<u>3 Mile</u>	<u>5 Mile</u>
Population	4,933	27,614	91,423
Households	2,038	10,818	36,007
Average HH Income	\$64,348	\$65,268	\$67,452

Traffic Count **63,500 vehicles daily** - Virginia Avenue & US 1 combined



Fraga Properties

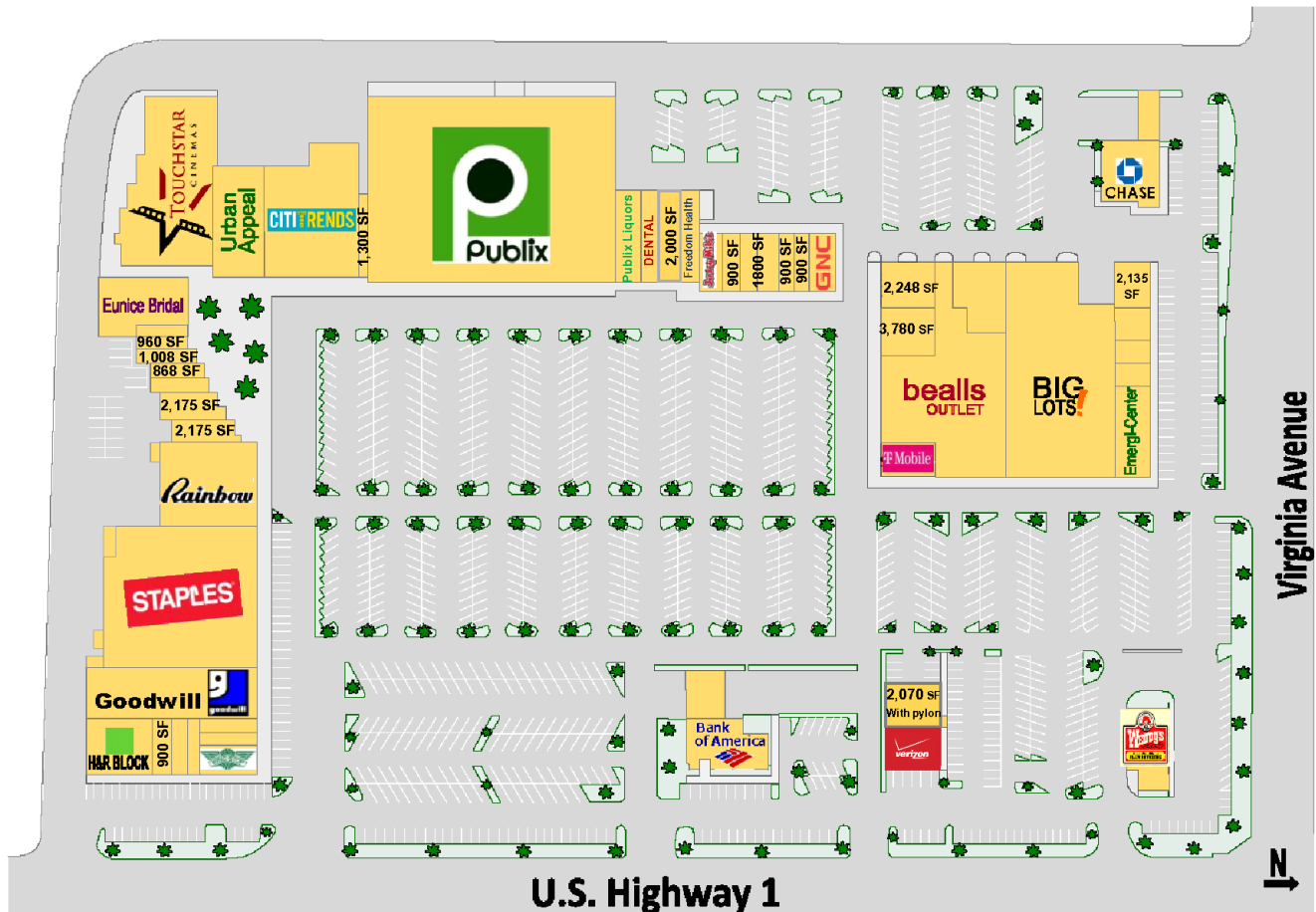
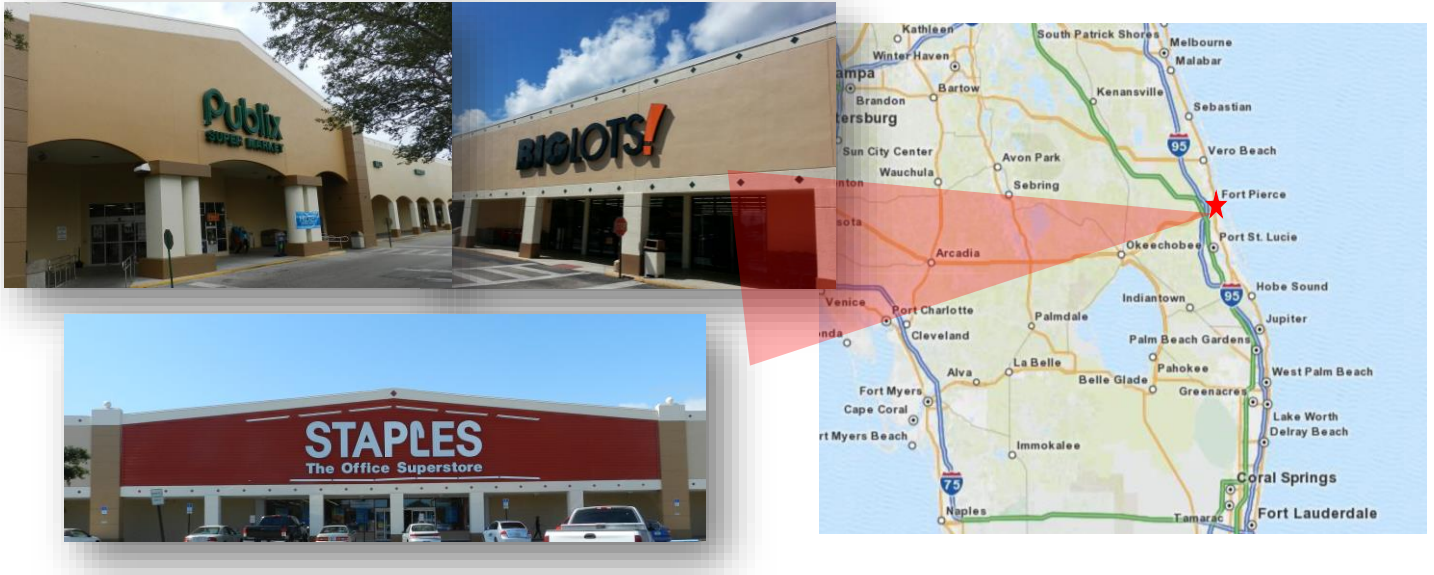
Acquisition | Development
Brokerage | Management | Leasing

Please contact: Connie Hull
Connie@FragaProperties.com

(305) 441-6633 Ext 11
www.FragaProperties.com

This information is subject to errors, omission, and withdrawal from market, modification of terms and conditions or change of Price without prior notice.

Now Leasing – Sabal Palm Plaza



Fraga Properties

Acquisition | Development
Brokerage | Management | Leasing

Please contact: Connie Hull
Connie@FragaProperties.com

(305) 441-6633 Ext 11
www.FragaProperties.com

This information is subject to errors, omission, and withdrawal from market, modification of terms and conditions or change of Price without prior notice.