



SCHRAMKO  
REAL ESTATE

**FOR LEASE**  
**950 N. York Road**  
**Suite 202-203-204**  
**Hinsdale**



### **Turnkey Medical Office with Procedure Rooms**

- 4,813 SF
- Large Waiting/Reception Area
- Retail Area with Casework/Display
- 6 Exam Rooms with Hand Sinks
- 2 Procedure Rooms
- Recovery Area, Locker Rooms and Breakroom
- 6 Enclosed Reserved Parking Spots
- Abundant On-Site Surface Parking
- ADA Accessible Medical Office Building
- Available Immediately

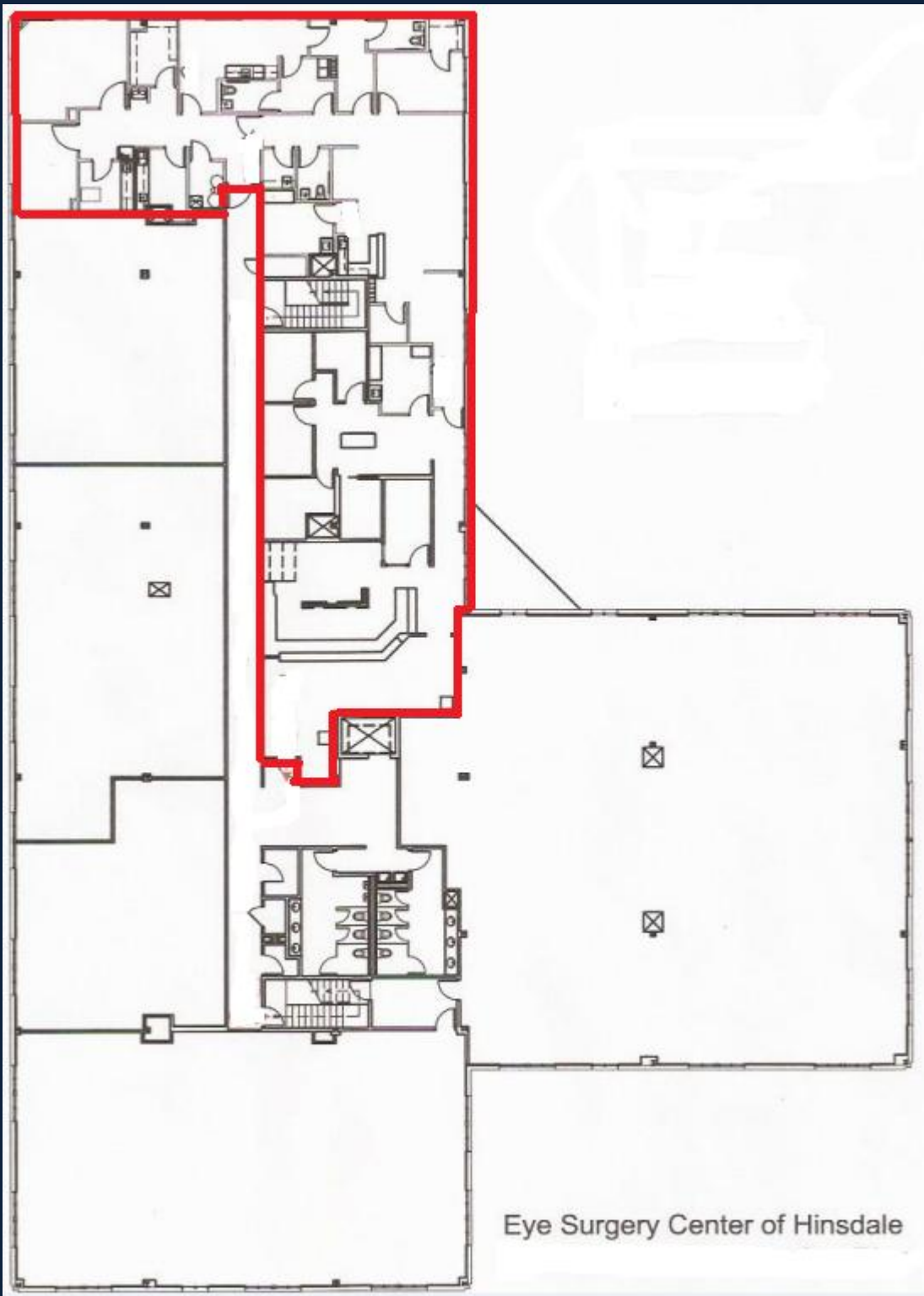
Chris Schramko  
Schramko Real Estate Corporation  
113 S. Garfield Street, Suite 200, Hinsdale, IL 60521  
630 984 9400



950 N. York – Main Entrance



950 N. York Road



Suite 202-203-204 Floor Plan

















### Suite 202-204 Details:

Size: 4,813 SF  
Co-Tenancy: A Variety of Professional Medical Practices  
Parking: 1 Reserved Enclosed Parking Space, plus open parking for 158 cars  
Zoning: O-2 Village of Hinsdale  
County: DuPage  
Net Rent: \$25 psf (well below market)



**Chris Schramko**  
**(630) 986-9400 or [cjschramko@schramko.com](mailto:cjschramko@schramko.com)**  
**113 S. Garfield Street, Suite 200, Hinsdale, IL 60521**

All information is from sources believed reliable, not independently verified, and thus subject to errors, omissions, and modifications such as price, listing, square footage, rates and commissions. All information, including market assumptions and conditions, are subject to change, and the changes could be material. SREC makes no express or implied representations or warranties, as facts and results may vary materially from all information, estimates and projections. Properties are subject to prior sale, withdrawal and other sales or rental conditions. Terms are subject to errors, omissions and change without notice.