

1236

MADISON AVENUE

Rare Corner Opportunity in the Heart
of the Prestigious Upper East Side

Southwest Corner
of 89th Street

CBRE



Ground Floor:

560 SF

Possession: Immediate

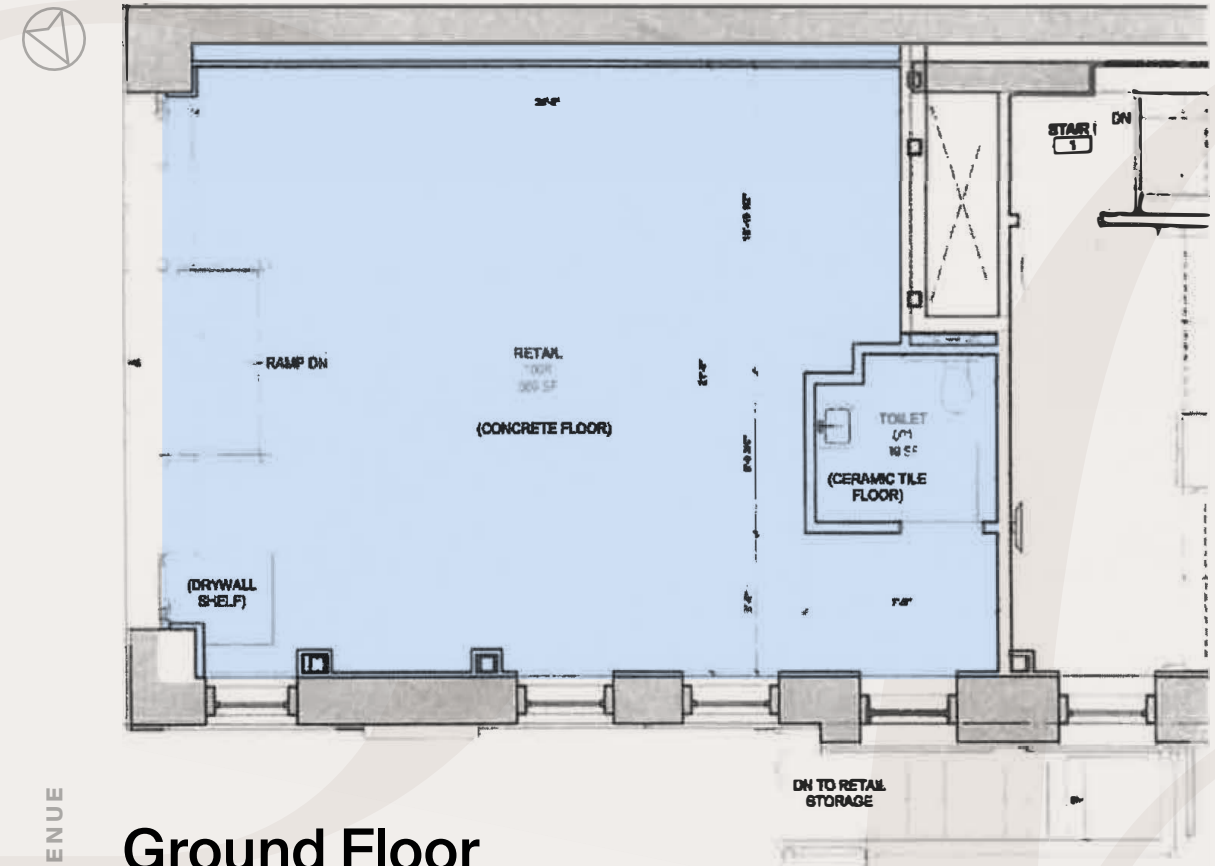
Term: Long Term

Comments:

- Located on the affluent Upper East Side with an average household income of \$150K
- Large windows on both Madison Avenue & 89th Street
- Includes basement storage
- Perfect for apparel users, jewelry stores, hair salons, and more.
- Currently babycottons
- In close proximity to many private schools, museums and Central Park

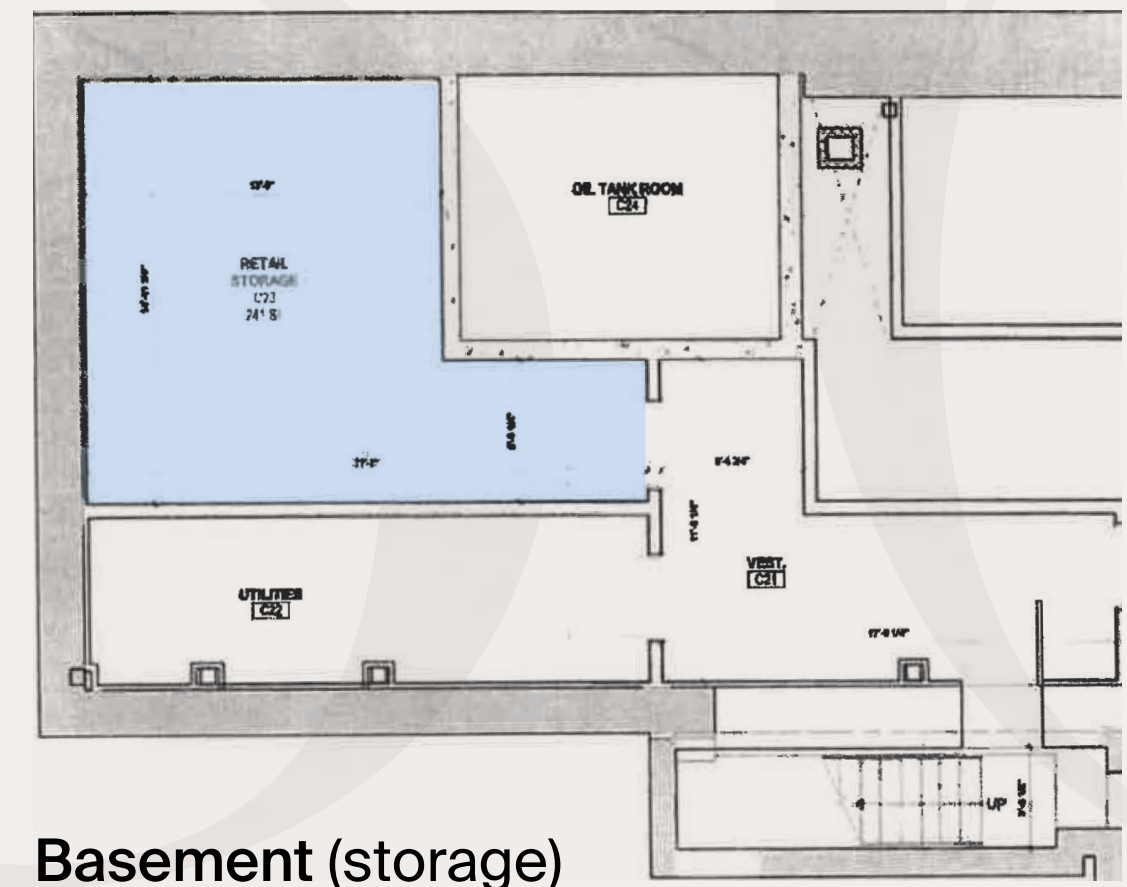
Neighbors:

DSF Home, Jacadi, Robert Marc, Blank Street Coffee, Clic, Benefit, Eli's, Madison Fare, Page Sargisson, Noglu, Glace, Blue Mercury, Pink Chicken, Blue & Cream, Unsubscribed



Ground Floor

MADISON AVENUE



Basement (storage)

EAST 89TH STREET



Central Park

FIFTH AVENUE

1236
MADISON AVENUE

EAST 88th STREET

MADISON AVENUE

EAST 89th STREET

PARK AVENUE

CHASE

ROLLER RABBIT VARLEY
BUTTERFIELD MARKET the westside

NILI LOTAN alexander florals
Brooks Brothers ALEX MILL.
alice + olivia

HANRO

PINK CHICKEN
NEW YORK

BLUE & CREAM

unsubscribed

GAS
BIJOUX

BRORA
EST. 1993

BLUEMERCURY

clic

ZADEH

Jacadi
PARIS

Paola's Osteria

Seigo Neckwear

Page Sargisson

RIGBY & PELLER
LINGERIE STYLISTS LONDON

GLACE
— New York —

le Lion

90th Street
PHARMACY

GINETTE NY

ELI
ZABAR

VUORI SWAROVSKI
TODD SNYDER (MALIN+GOETZ)
NEW YORK

FAHERTY

MORRYN WILLIAMS
THE FRESH MARKETPLACE

JnJ Nail

Madison Fare
New York

benefit

DR
DIAMETRYC

Le Petit Kids

ESÉ AZÉNABOR

1236

MADISON AVENUE

Lon Rubackin

+1 (212) 984 8195

lon.rubackin@cbre.com

Bevan Cohen

+1 (212) 895 0945

bevan.cohen@cbre.com

CBRE



© 2025 CBRE, Inc. All rights reserved. This information has been obtained from sources believed reliable, but has not been verified for accuracy or completeness. You should conduct a careful, independent investigation of the property and verify all information. Any reliance on this information is solely at your own risk. CBRE and the CBRE logo are service marks of CBRE, Inc. All other marks displayed on this document are the property of their respective owners, and the use of such logos does not imply any affiliation with or endorsement of CBRE.