



INDUSTRIAL LAND FOR SALE

INDUSTRIAL LOTS FOR SALE | 1820 & 1914 N BARNES AVE, SPRINGFIELD, MO 65803

- Easy access to I-44 and Hwy 65
- All utilities available
- Multiple lots available
- Various sizes available ranging from 1.09 - 13.32± total acres

EST. 1909

2225 S. Blackman Road
Springfield, MO 65809
417.881.0600
rbmurray.com

Ryan Murray, SIOR, CCIM, LEED AP, CPM
417.881.0600
ryan@rbmurray.com

Robert Murray, Jr., SIOR
417.881.0600
bob@rbmurray.com

R.B. MURRAY COMPANY
SINCE 1909
COMMERCIAL & INDUSTRIAL REAL ESTATE

Executive Summary



PROPERTY SUMMARY

Sale Price: \$207,900 - \$859,900

Lots:
1820 (North): 1.65± Acres \$284,900.00
1820 (South): 1.09± Acres \$207,900.00
1914: 5.68± Acres \$781,000.00

Taxes (2025):
 1820 (North): \$4,420.74
 1820 (South): \$3,065.81
 1914: \$2,599.69

Lot Size: 8.42 Acres

Zoning: HM - Heavy Manufacturing

PROPERTY OVERVIEW

Industrial lots for sale on North Barnes. Located in North Springfield, these industrial lots are conveniently located near I-44 and Hwy 65. Neighboring businesses include: Bass Pro National Headquarters, Killian Construction Company, Coca-Cola, Pepsi, Fabick Cat, Loren Cook Company, & United Rentals. The land allows for an extensive number of industrial uses providing flexibility and maximum utilization of the property. Contact listing agent for more information.

PROPERTY HIGHLIGHTS

- All utilities available
- Various sizes available ranging from 1.09 - 13.32± total acres
- Available Lots:
 - 1820 N. Barnes (North): 1.65± acres
 - 1820 N. Barnes (South): 1.09± acres
 - 1914 N. Barnes: 5.68± acres
 - 1836 N. Barnes: Two Industrial buildings on 4.9± acres also available for sale at \$859,900



The information listed above has been obtained from sources we believe to be reliable; however, we accept no responsibility for its accuracy.

LAND FOR SALE

1820 & 1914 N BARNES AVE, SPRINGFIELD, MO 65803
INDUSTRIAL LOTS FOR SALE



Land Lots

STATUS	ADDRESS	SIZE	PRICE	ZONING
Available	1914 N. Barnes	5.68 Acres	\$781,000	HM - Heavy Manufacturing
Available	1836 N. Barnes	4.9 Acres	\$859,900	HM - Heavy Manufacturing
Available	1820 N. Barnes (North Lot)	1.65 Acres	\$284,900	HM - Heavy Manufacturing
Available	1820 N. Barnes (South Lot)	1.09 Acres	\$207,900	HM - Heavy Manufacturing

Ryan Murray, SIOR, CCIM, LEED AP, CPM | 417.881.0600 | ryan@rbmurray.com

Robert Murray, Jr., SIOR | 417.881.0600 | bob@rbmurray.com

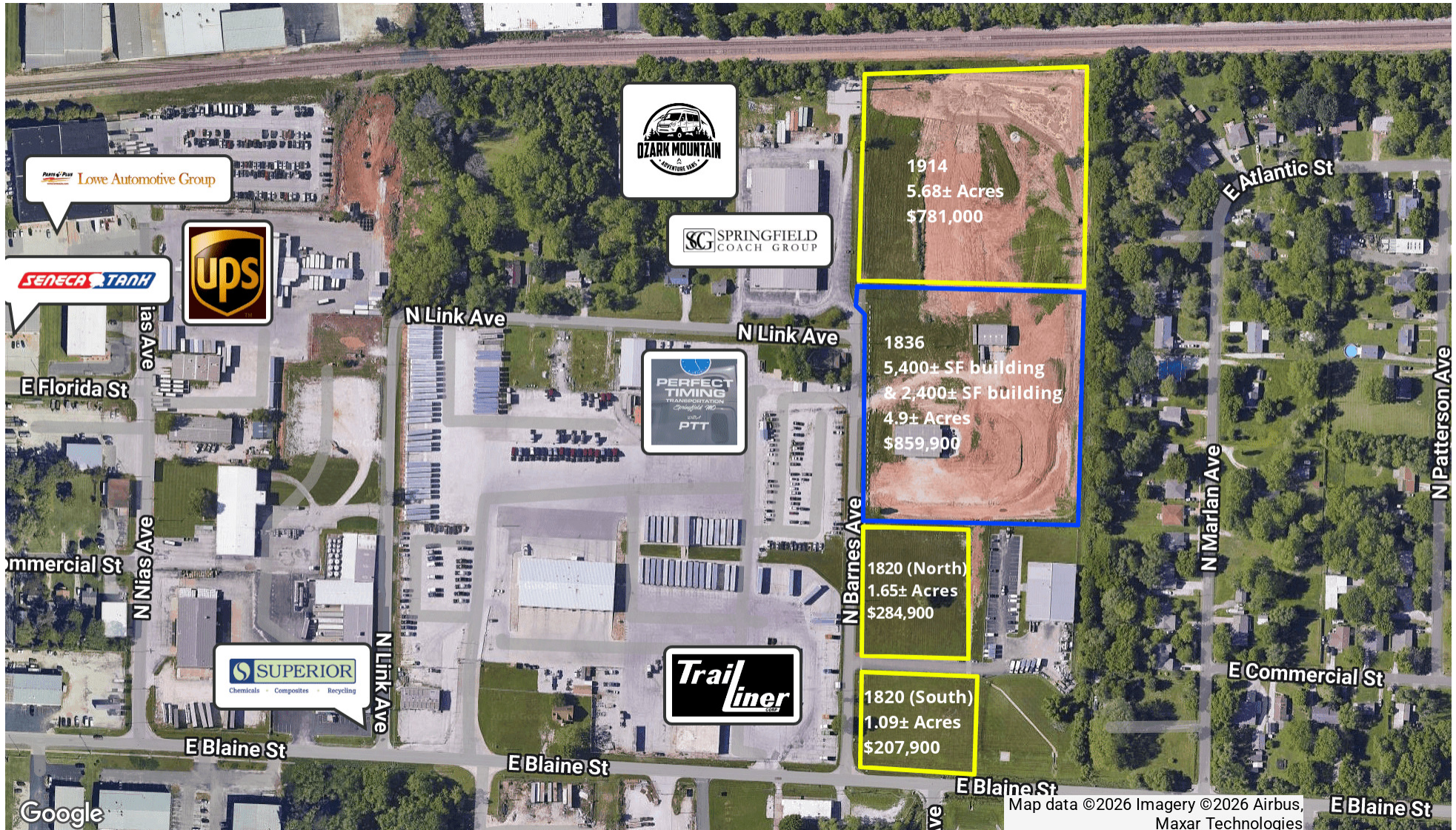
2225 S. Blackman Road | Springfield, MO 65809 | 417.881.0600

LAND FOR SALE

1820 & 1914 N BARNES AVE, SPRINGFIELD, MO 65803 INDUSTRIAL LOTS FOR SALE



Retailer Map



Ryan Murray, SIOR, CCIM, LEED AP, CPM | 417.881.0600 | ryan@rbmurray.com
Robert Murray, Jr., SIOR | 417.881.0600 | bob@rbmurray.com
2225 S. Blackman Road | Springfield, MO 65809 | 417.881.0600

R.B. MURRAY COMPANY
COMMERCIAL & INDUSTRIAL REAL ESTATE

LAND FOR SALE

1820 & 1914 N BARNES AVE, SPRINGFIELD, MO 65803 INDUSTRIAL LOTS FOR SALE



Retailer Map



Ryan Murray, SIOR, CCIM, LEED AP, CPM | 417.881.0600 | ryan@rbmurray.com
Robert Murray, Jr., SIOR | 417.881.0600 | bob@rbmurray.com
2225 S. Blackman Road | Springfield, MO 65809 | 417.881.0600

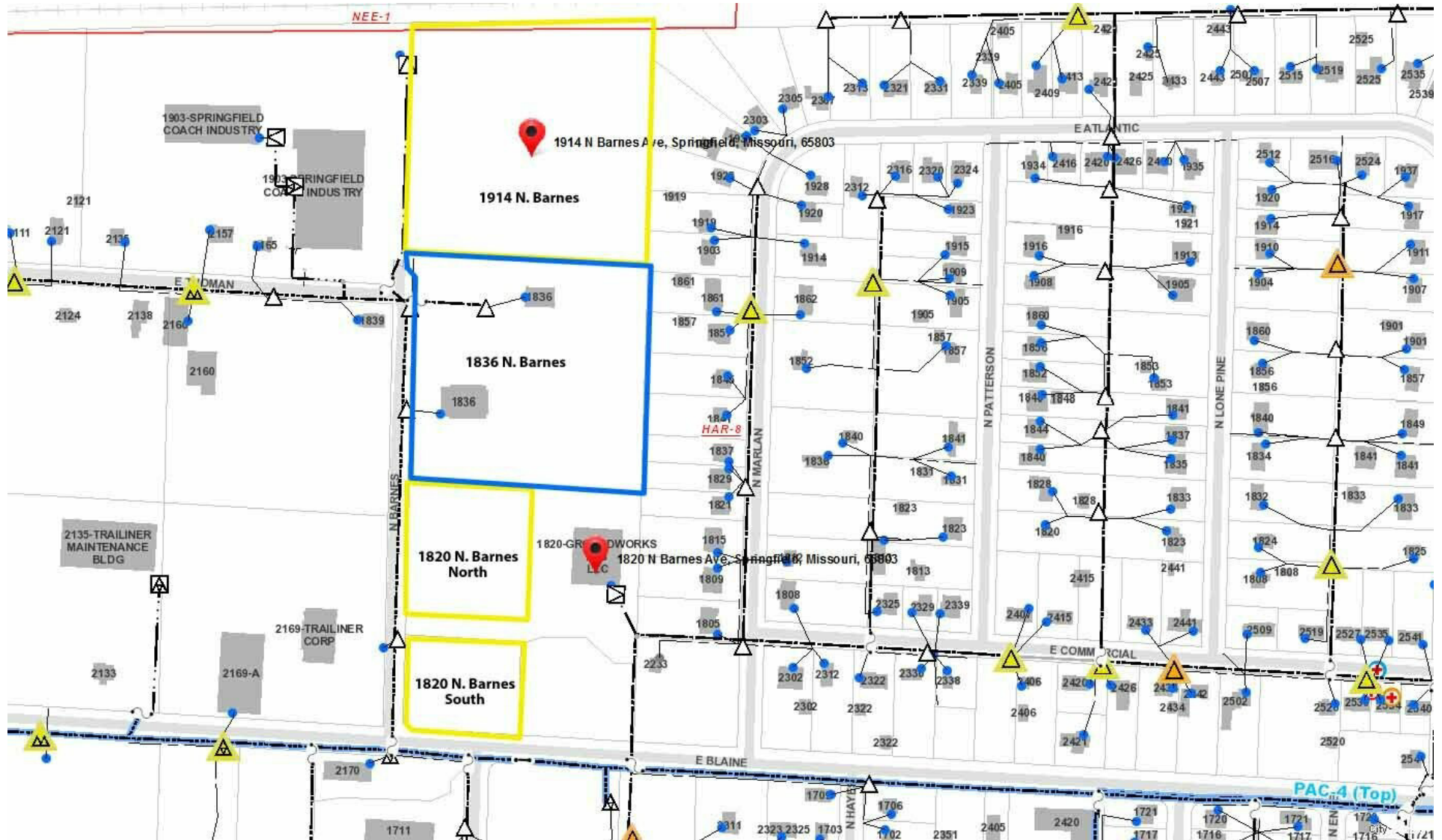
R.B. | MURRAY COMPANY
COMMERCIAL & INDUSTRIAL REAL ESTATE

LAND FOR SALE

1820 & 1914 N BARNES AVE, SPRINGFIELD, MO 65803 INDUSTRIAL LOTS FOR SALE



Electric Map



Ryan Murray, SIOR, CCIM, LEED AP, CPM | 417.881.0600 | ryan@rbmurray.com

Robert Murray, Jr., SIOR | 417.881.0600 | bob@rbmurray.com

2225 S. Blackman Road | Springfield, MO 65809 | 417.881.0600

R.B. MURRAY COMPANY

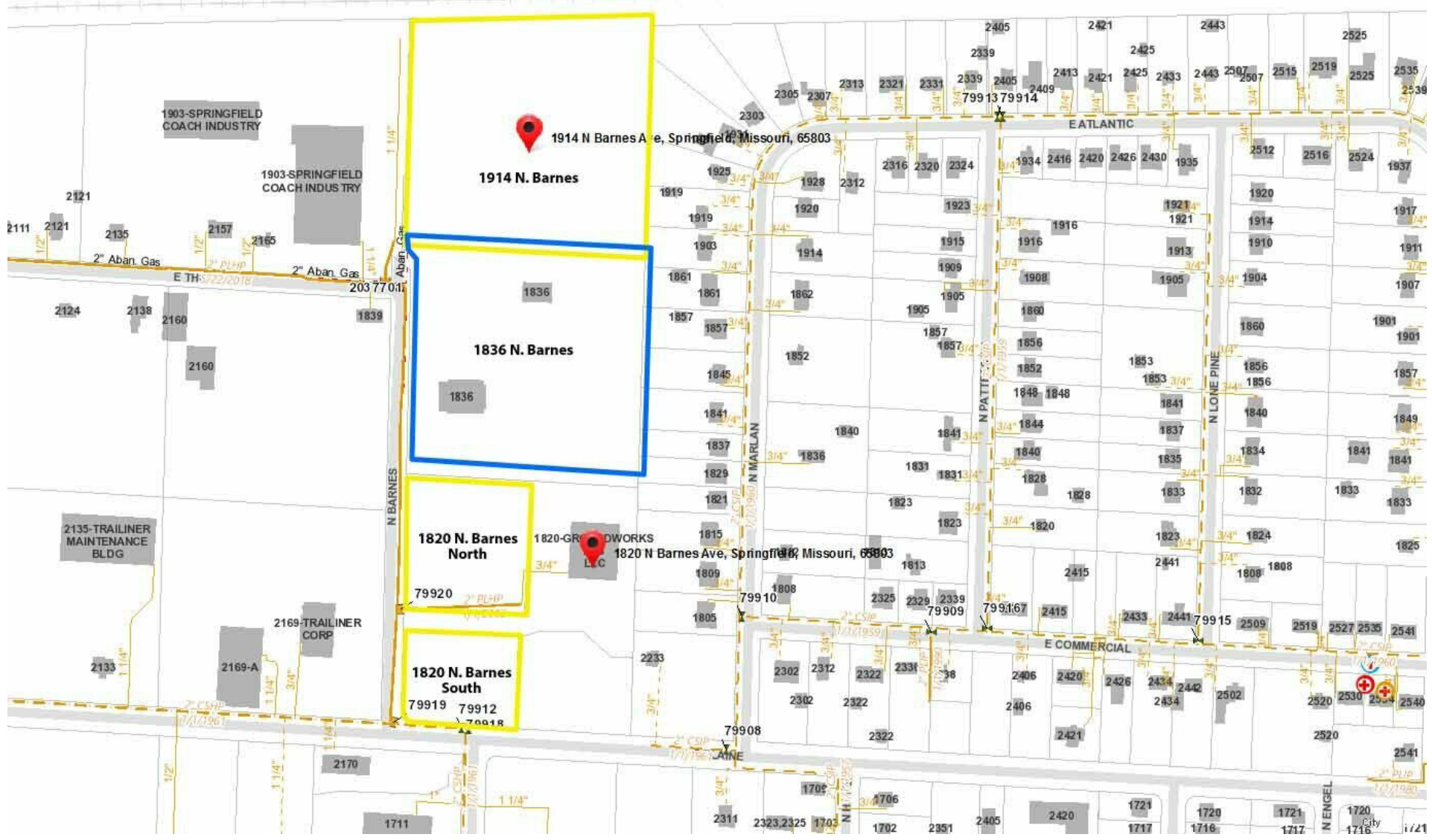
COMMERCIAL & INDUSTRIAL REAL ESTATE

LAND FOR SALE

1820 & 1914 N BARNES AVE, SPRINGFIELD, MO 65803 INDUSTRIAL LOTS FOR SALE



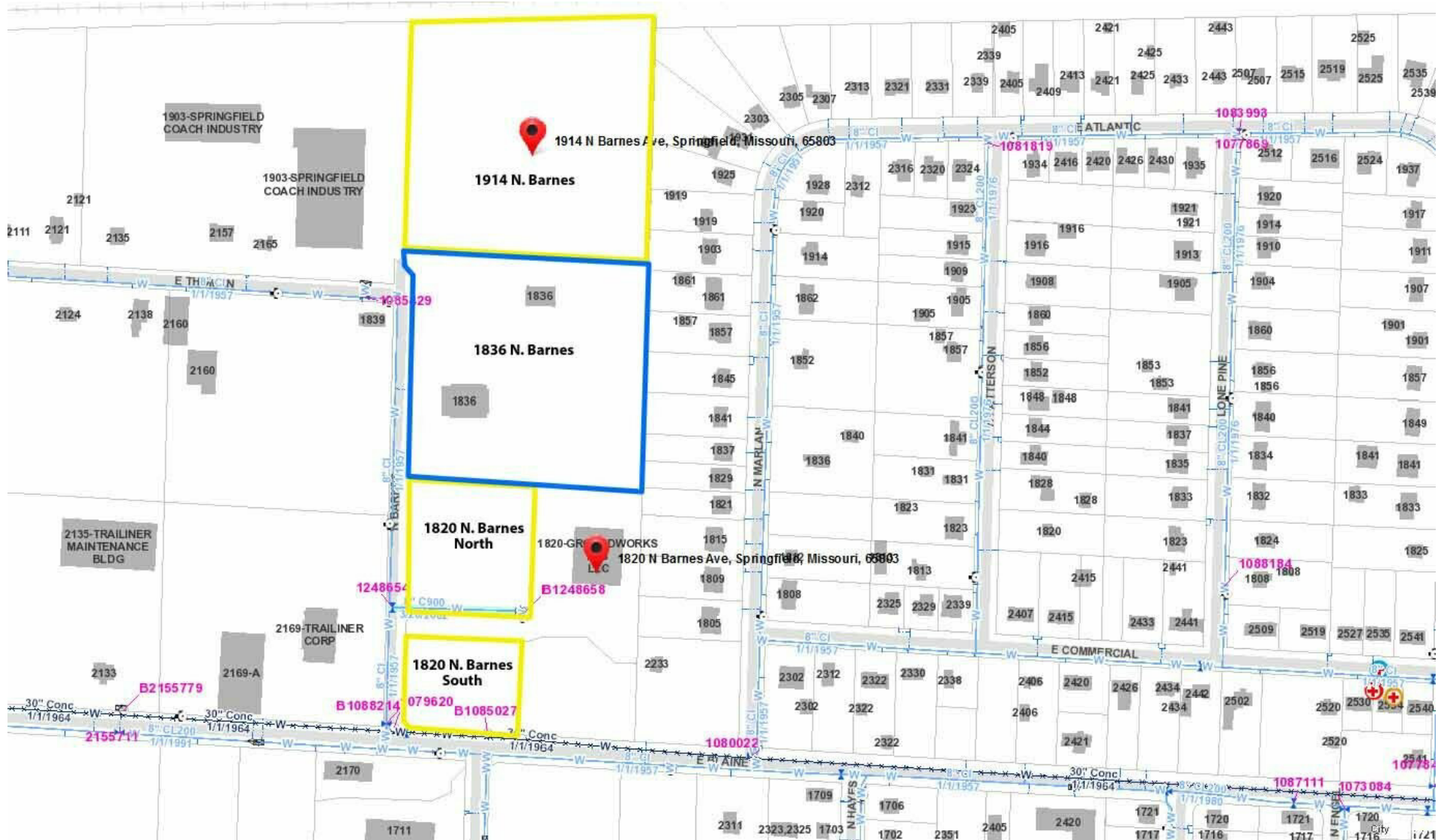
Gas Map



Ryan Murray, SIOR, CCIM, LEED AP, CPM | 417.881.0600 | ryan@rbmurray.com
Robert Murray, Jr., SIOR | 417.881.0600 | bob@rbmurray.com
2225 S. Blackman Road | Springfield, MO 65809 | 417.881.0600

R.B. MURRAY COMPANY
COMMERCIAL & INDUSTRIAL REAL ESTATE

Water Map



LAND FOR SALE

1820 & 1914 N BARNES AVE, SPRINGFIELD, MO 65803
INDUSTRIAL LOTS FOR SALE



Sewer Map



Ryan Murray, SIOR, CCIM, LEED AP, CPM | 417.881.0600 | ryan@rbmurray.com
Robert Murray, Jr., SIOR | 417.881.0600 | bob@rbmurray.com
2225 S. Blackman Road | Springfield, MO 65809 | 417.881.0600

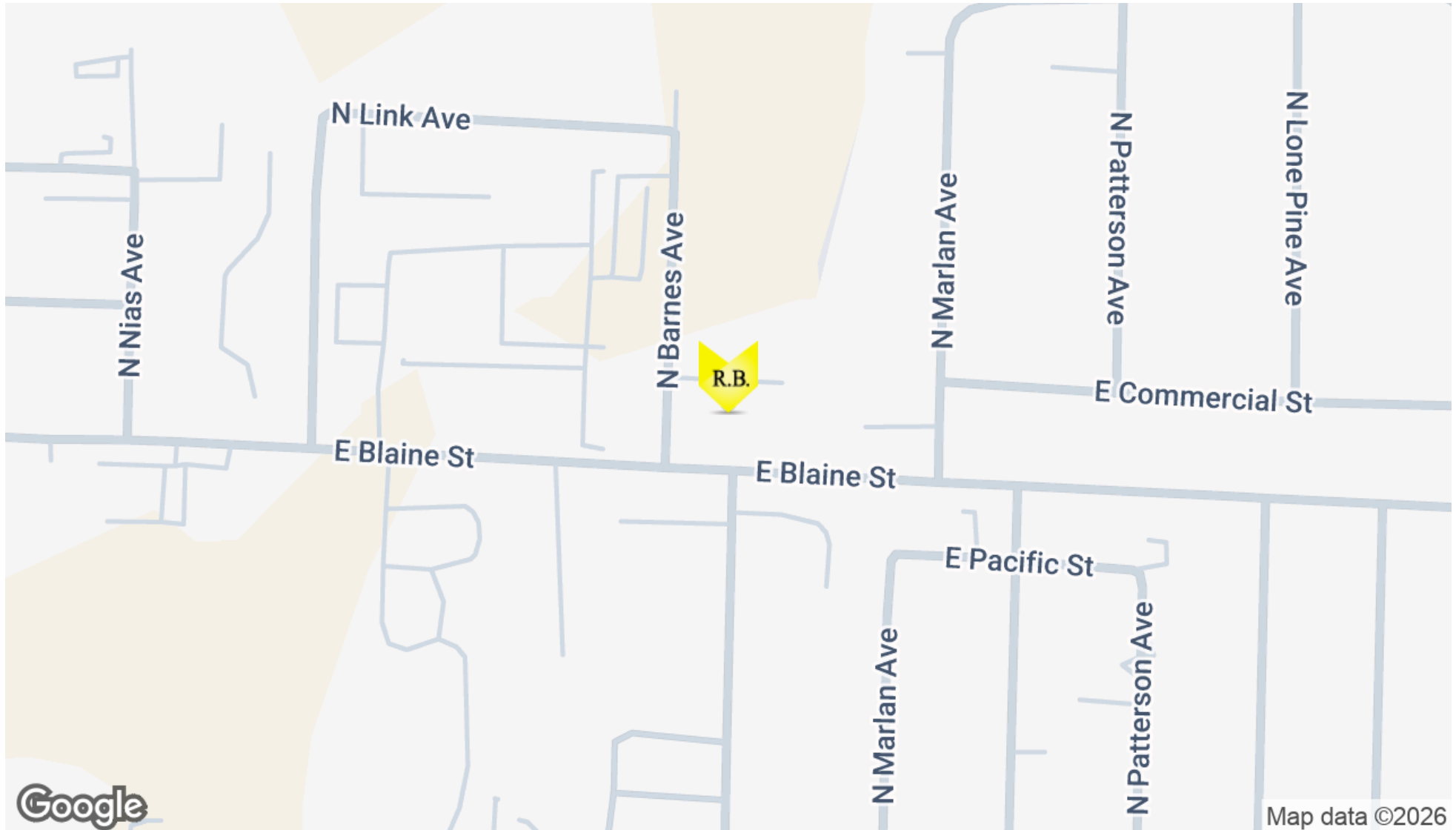
R.B. | MURRAY COMPANY
COMMERCIAL & INDUSTRIAL REAL ESTATE

LAND FOR SALE

1820 & 1914 N BARNES AVE, SPRINGFIELD, MO 65803
INDUSTRIAL LOTS FOR SALE



Location Map



Ryan Murray, SIOR, CCIM, LEED AP, CPM | 417.881.0600 | ryan@rbmurray.com

Robert Murray, Jr., SIOR | 417.881.0600 | bob@rbmurray.com

2225 S. Blackman Road | Springfield, MO 65809 | 417.881.0600

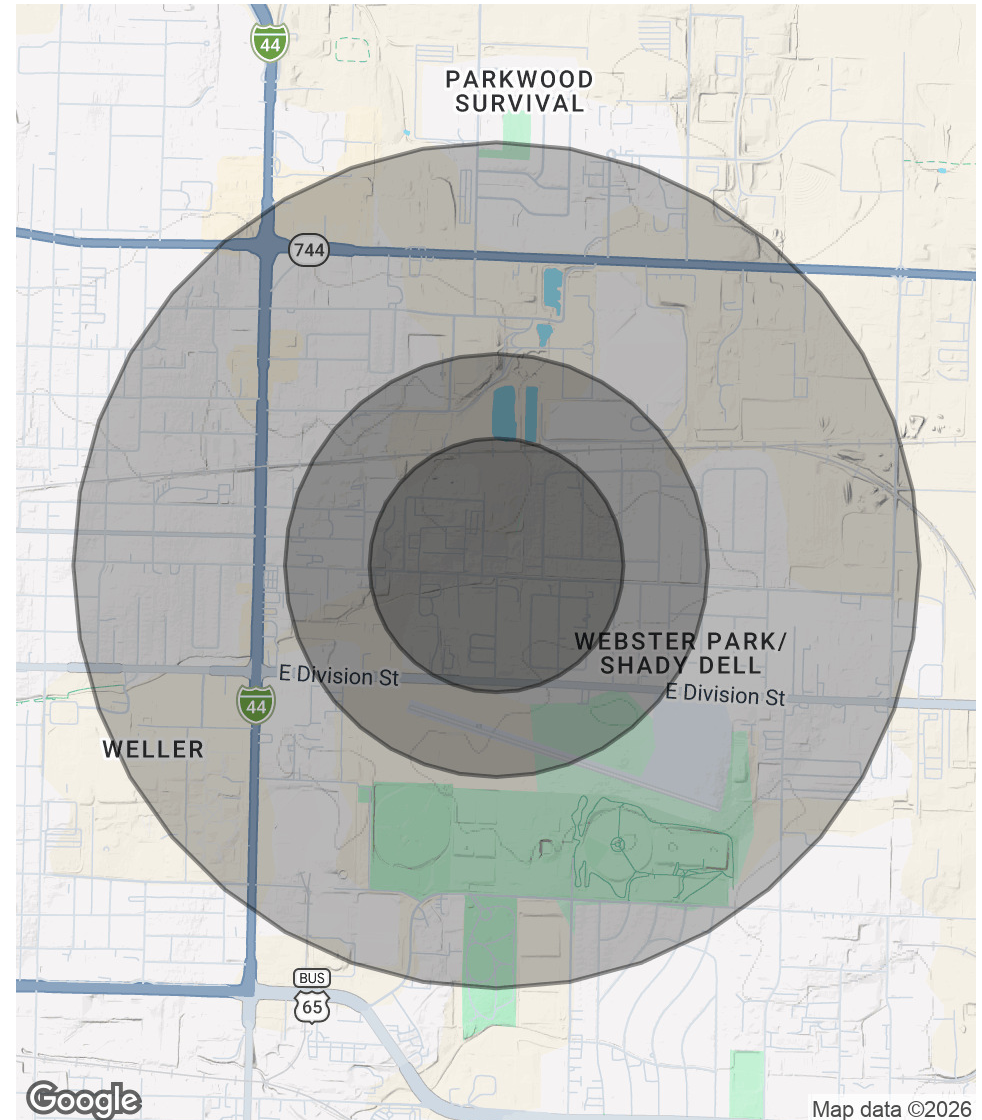
R.B. | MURRAY COMPANY

COMMERCIAL & INDUSTRIAL REAL ESTATE

Demographics Map & Report

POPULATION	0.3 MILES	0.5 MILES	1 MILE
Total Population	503	1,163	4,775
Average Age	39	39	36
Average Age (Male)	39	39	36
Average Age (Female)	40	40	37
HOUSEHOLDS & INCOME	0.3 MILES	0.5 MILES	1 MILE
Total Households	214	495	1,921
# of Persons per HH	2.4	2.3	2.5
Average HH Income	\$48,540	\$49,363	\$54,759
Average House Value	\$109,475	\$115,560	\$142,189

2020 American Community Survey (ACS)



Advisor Bio

RYAN MURRAY, SIOR, CCIM, LEED AP, CPM
Chief Executive Officer

2225 S. Blackman Road
Springfield, MO 65809

T 417.881.0600
ryan@rbmurray.com
MO #2007030465

Professional Background

Ryan Murray joined R.B. Murray Company after graduating with Distinction Honors with a B.A. in Business Administration, and obtaining the Leeds School of Business Real Estate Certificate, from the University of Colorado. He was later named Vice President, specializing in the sales & leasing of office, retail, and industrial properties. Mr. Murray also oversees R.B. Murray Company's property management & receivership divisions.

Recently Mr. Murray obtained the Society of Industrial and Office Realtors (SIOR) designation, a professional achievement for highly qualified commercial real estate practitioners with a strong transactional history in brokerage. SIOR individual members are the best in the commercial real estate industry, and the top-producers in their field. SIOR members are in more than 630 cities and 33 countries worldwide, and are recognized as top producing professionals – closing on average more than 30 transactions per year, and have met stringent production, education, and ethical requirements.

Mr. Murray has achieved the Certified Commercial Investment Member Designation (CCIM), and was one of the state's first commercial real estate professionals to achieve Leadership in Energy and Environmental Design Accredited Professional (LEED AP) status. As a Certified Commercial Investment Member (CCIM) Mr. Murray is a recognized expert in the disciplines of commercial and investment real estate, and as a LEED AP Mr. Murray has demonstrated a thorough understanding of green building practices and principles and the LEED Rating System.

Mr. Murray has also earned Certified Property Manager® (CPM®) designation from the Institute of Real Estate Management (IREM®), an affiliate of the National Association of REALTORS®. The CPM® designation is awarded to real estate managers who have met the Institute's rigorous requirements in the areas of professional education, examination and experience. CPM® Members must also abide by a rigorous Code of Professional Ethics that is strictly enforced by the Institute.

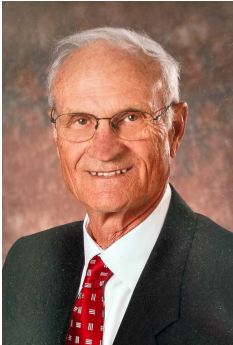
Mr. Murray currently serves as a director on the OTC Foundation Board and the Rotary Club of Springfield Southeast Board, is a past member of the Board of Directors for the Make-A-Wish® Foundation of Missouri, and a graduate of the Leadership Springfield program. Mr. Murray lives in Springfield with his wife Maggie and their son & daughter.

Memberships & Affiliations

SIOR, CCIM, LEED AP, CPM

EST. 1909

Advisor Bio

ROBERT MURRAY, JR., SIOR
Chief Financial Officer

2225 S. Blackman Road
Springfield, MO 65809

T 417.881.0600
F 417.882.0541
bob@rbmurray.com
MO #1999022566

Professional Background

For more than 50 years, Robert B. Murray, Jr. has been developing, selling and leasing commercial real estate. Offering a wealth of experience and insight, he is an active member of the Society of Industrial and Office Realtors (SIOR), and has worked extensively with some of the largest commercial and industrial real estate firms in the country.

A graduate of Drury College, Bob furthered his education by attending classes at the Master Appraisal Institute (MAI) and seminars through the International Council of Shopping Centers (ICSC). In 1984, he became a member of the Society of Industrial and Office Realtors (SIOR).

Bob is also active in the Springfield business community. He presently is a member of the Emeritus Board of Lester E. Cox Medical Center. In the past, Bob has been a long standing member of the board of directors at Lester E. Cox Medical Centers, where he has been president and chaired the Buildings and Grounds Committee. Bob was a member of the Commerce Bank Board for 26.5 years, and he has also been a director of Hickory Hills Country Club and was the president of the Business and Development Division of the Springfield Area Chamber of Commerce.

Memberships & Affiliations

Society of Industrial and Office Realtors (SIOR)

EST. 1909