

36

WEST 34TH STREET

BETWEEN 5TH & 6TH AVENUES

HERALD SQUARE | MIDTOWN



36

WEST 34TH STREET


BETWEEN 5TH & 6TH AVENUES
HERALD SQUARE | MIDTOWN

SIZE: 1,955 SF Second Floor

FRONTAGE: 20'

POSSESSION: Immediate

ASKING RENT: Upon Request

TRANSPORTATION:  AMTRAK NJ TRANSIT Long Island Rail Road

HIGHLIGHTS:

- Prime opportunity in the heart of Herald Square/Midtown
- Steps away from Empire State Building Observatory door
- High foot traffic area
- 1/2 block from the Herald Square station which sees 21M riders annually
- Neighboring tenants include:
Chipotle, Starbucks, Foot Locker, Zara, Fossil, Aldo, Superdry, Zumiez, Lush, Pandora, UGG, H&M, Target, Macy's, Portabella, Timberland, Build a Bear, Bank of America, & many more!



LOS TACOS No. 1

PENN STATION

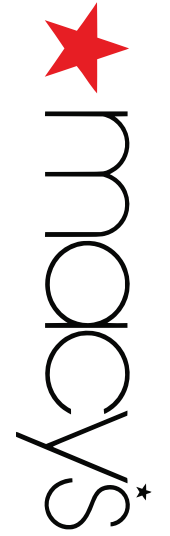


SEVENTH AVENUE



WEST 33RD STREET

WEST 34TH STREET



AÉROPOSTALE

SIXTH AVENUE

BROADWAY



TACOMBI

CHOPT



THE EMPIRE STATE BUILDING

FIFTH AVENUE

CHOPT



DUNKIN'



STEVE MADDEN

ZARA

ALDO

Superdry

BANANA REPUBLIC



Lindt

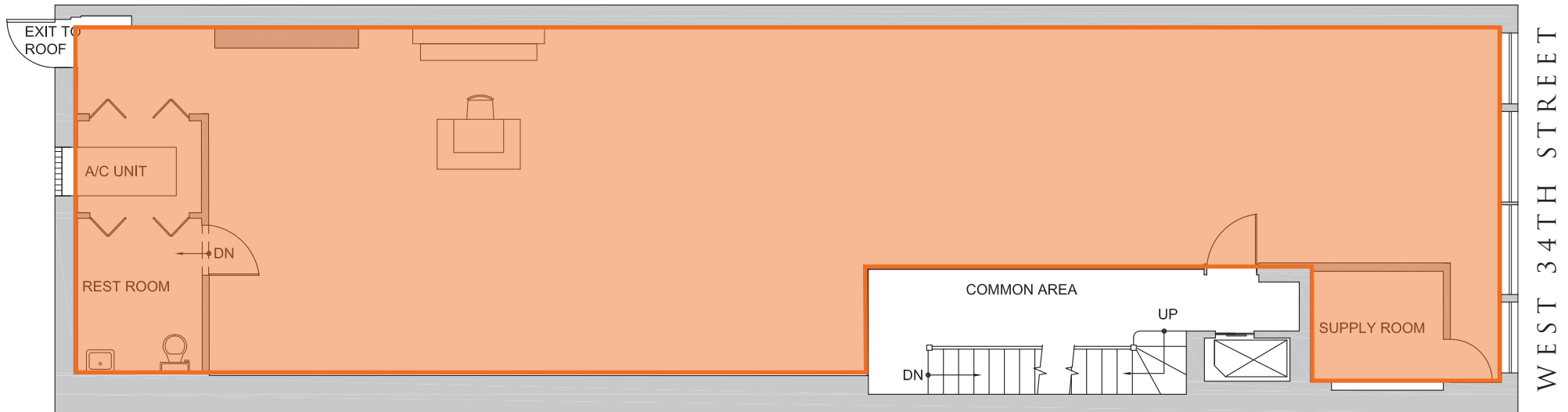
LENSCRAFTERS



36

WEST 34TH STREET

FLOOR PLAN:
SECOND FLOOR - 1,955 SF



36



WEST 34TH STREET

BETWEEN 5TH & 6TH AVENUES
MIDTOWN

36 West 34th Street is situated in the heart of Midtown Manhattan's major commercial hub known as Herald Square.

Formed by the intersection of Broadway, Sixth Avenue (officially Avenue of the Americas), and 34th Street, Herald Square is named for the New York Herald newspaper, whose building was located on 35th Street from 1893 to the 1920s.

The square's most prominent feature is the elaborate Bennett Clock, named for Herald publisher James Gordon Bennett Jr. The monument features the Bellringers, dubbed "Guff" and "Stuff," and owls with flashing green eyes. Owls were Bennett's talisman, and the new massive granite gateposts, installed by the Partnership, feature bronze owl figures by sculptor Greg Lefevre.

Herald Square is a wonderful place to take a break from shopping and sightseeing: pull up a chair, enjoy some refreshments from the food kiosk operated by Wafels & Dinges, and rest your eyes on the Partnership's award-winning gardens. And be sure to catch Guff and Stuff ringing their bells every hour on the hour.



19,714
TOTAL POPULATION

\$123K
AVERAGE INCOME

10,465
TOTAL HOUSEHOLDS

62.3K
AVERAGE VISITORS/DAY

36

WEST 34TH ST

BETWEEN 5TH & 6TH AVENUES
HERALD SQUARE | MIDTOWN

FOR MORE INFORMATION,
PLEASE CONTACT:

DOREL MELLOUL

347.922.4563 | DMelloul@ksrny.com

MARC SITT

917.757.8863 | MSitt@ksrny.com

ALBERT MANOPLA

212.380.8369 | AManopla@ksrny.com

