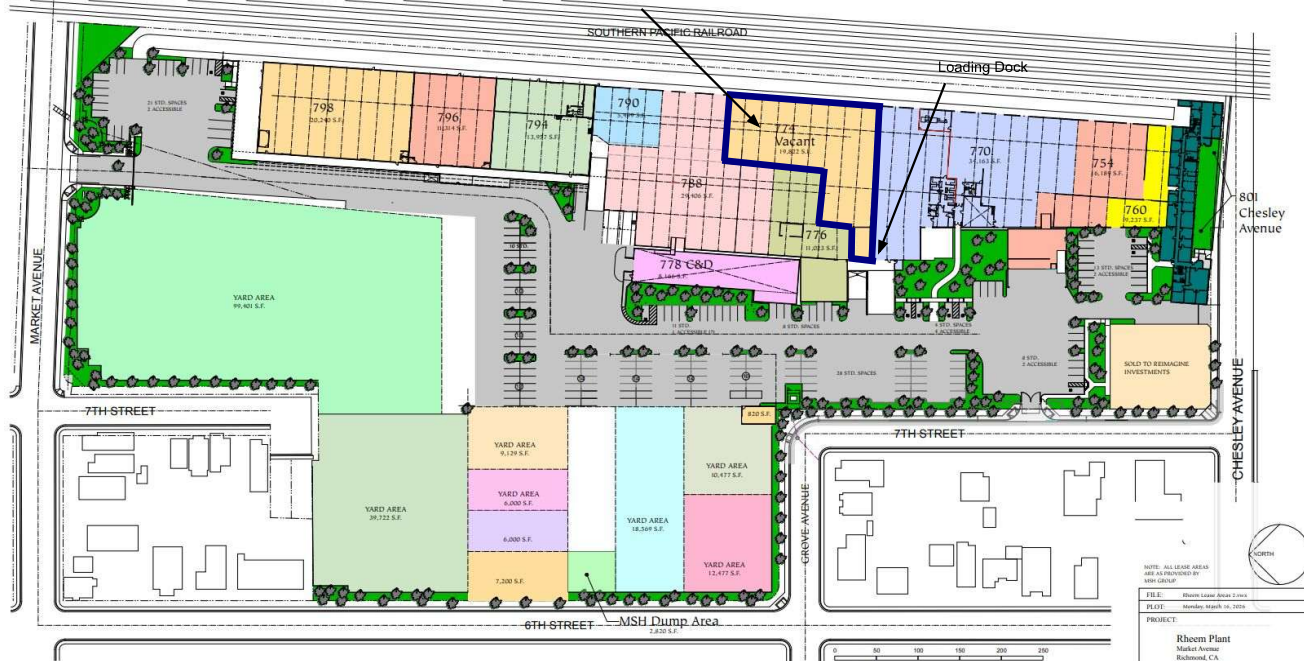


# WAREHOUSE SPACE AVAILABLE 19,822 SF



774 Market Avenue, Richmond, California 94801  
(aka 801 Chesley Ave. ~ Rheem Industrial Park)

- 25' high clear warehouse
- 200A, 480 3- Phase power
- Gated, secure facility
- New LED High Bay Lighting
- Sprinklered building
- 12 x 14 Drive in roll-up door
- 12 x 14 Loading Dock
- 255 Common Area Parking Spaces
- Available: Estimated 4/1/2026
- \$1.00/SF monthly price +  
\$0.17/SF NNN



**For Information or to schedule a tour, contact:**

Mark Howe 510.932.4435 (cell)  
MSH Group 510.215.5134 (office)

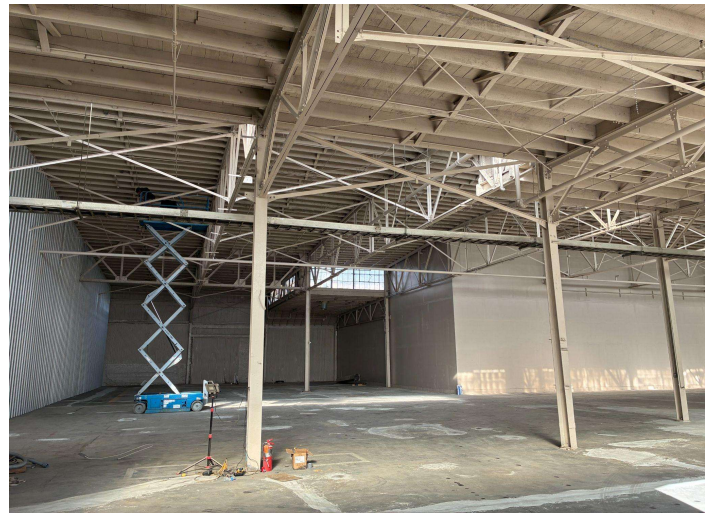
MSH Properties, Inc.  
DRE Lic. #01920581

**MSH Group**

201 W. Richmond Ave., Ste. C  
Pt Richmond CA 94801



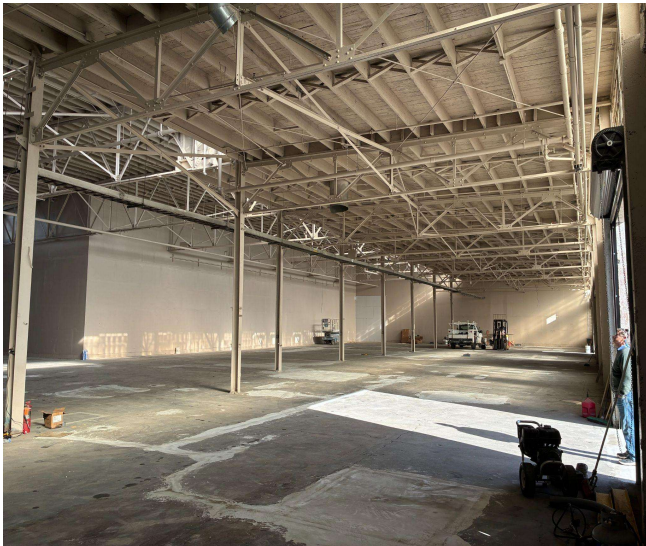
Loading Dock



Common Area Parking



Drive in Roll up Door



Loading Dock

**For Information or to schedule a tour, contact:**

**Mark Howe 510.932.4435 (cell)**

**MSH Group 510.215.5134 (office)**

**MSH Properties, Inc.**

**MSH Group**

**DRE Lic. #01920581**

**201 W. Richmond Ave., Ste. C**

**Pt Richmond CA 94801**