

# Sublease



## PCT

222 N. Pacific Coast Highway, El Segundo, CA 90245

### Premises

<b>Available SF</b>	Suite 2050 - 5,770 SF
<b>Asking Rent</b>	\$3.15 PSF, FSG or Best Offer
<b>Occupancy</b>	Immediate
<b>Term</b>	Through January 31, 2029

### Features

- Excellent freeway access
- Covered parking garage
- Concierge services
- On-site restaurants
- Upscale fitness center
- Pickleball and basketball courts
- Conference facilities

Reach out to us for more details or to schedule a tour.

### Contact

#### Jim Jandro

310.704.3981 mobile  
jjandro@cresa.com  
BRE# 00980694

#### James Gooch

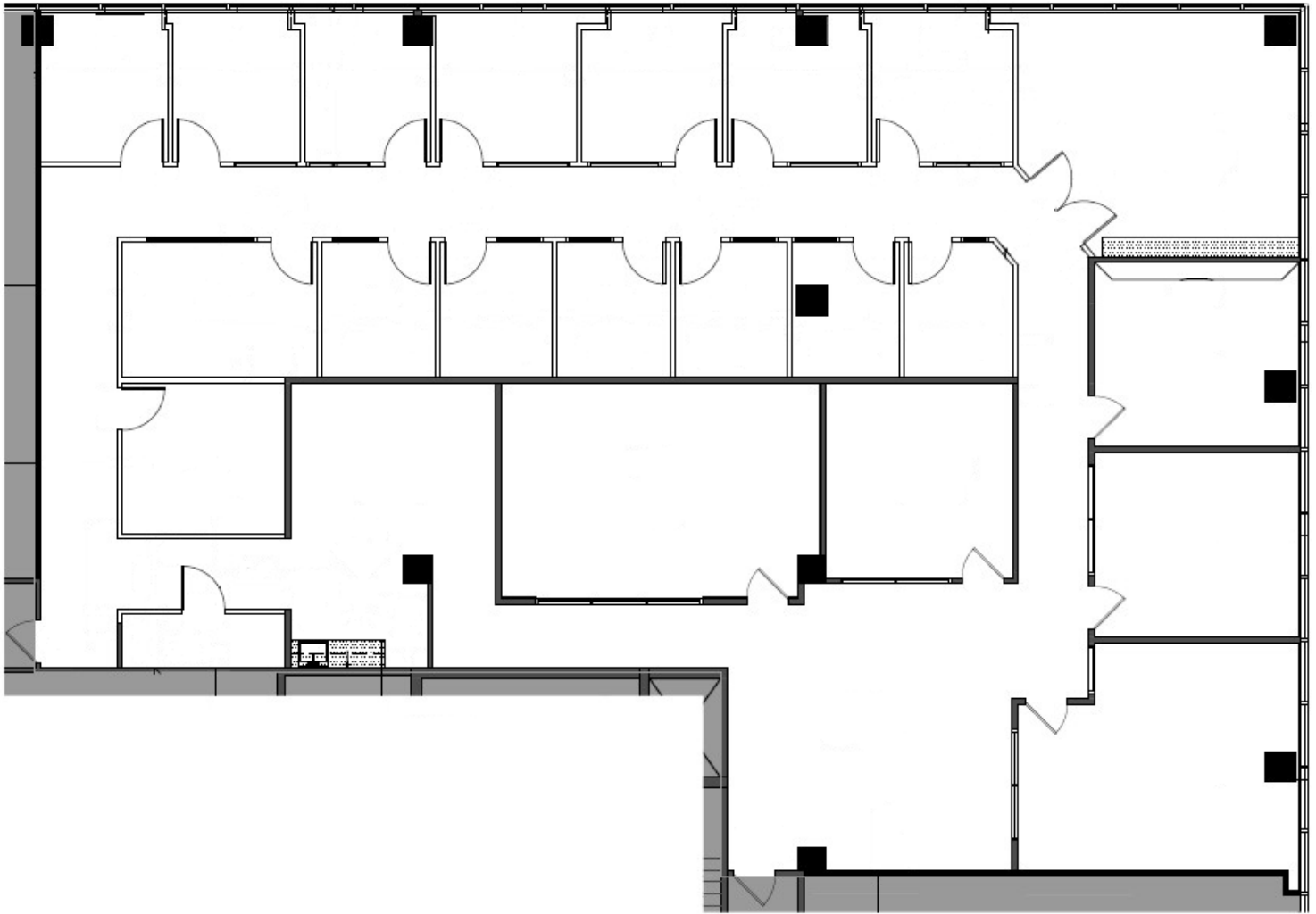
805.455.5441 mobile  
jgooch@cresa.com  
BRE# 02266761



# Sublease

222 N. Pacific Coast Hwy

Suite 2050 - 5,770 SF Available



**cresa** ::::

**Jim Jandro**

310.704.3981 mobile  
jjandro@cresa.com  
BRE# 00980694

**James Gooch**

805.455.5441 mobile  
jgooch@cresa.com  
BRE# 02266761

Cresa © 2025. All rights reserved. The information contained in this document has been obtained from sources believed reliable. While Cresa does not doubt its accuracy, Cresa has not verified it and makes no guarantee, warranty, or representation about it. It is your responsibility to independently confirm its accuracy and completeness. Any projections, opinions, assumptions or estimates used are for example only and do not represent the current or future performance of the property. The value of this transaction to you depends on tax and other factors which should be evaluated by your tax, financial and legal advisors. You and your advisors should conduct a careful, independent investigation of the property to determine to your satisfaction the suitability of the property for your needs.