

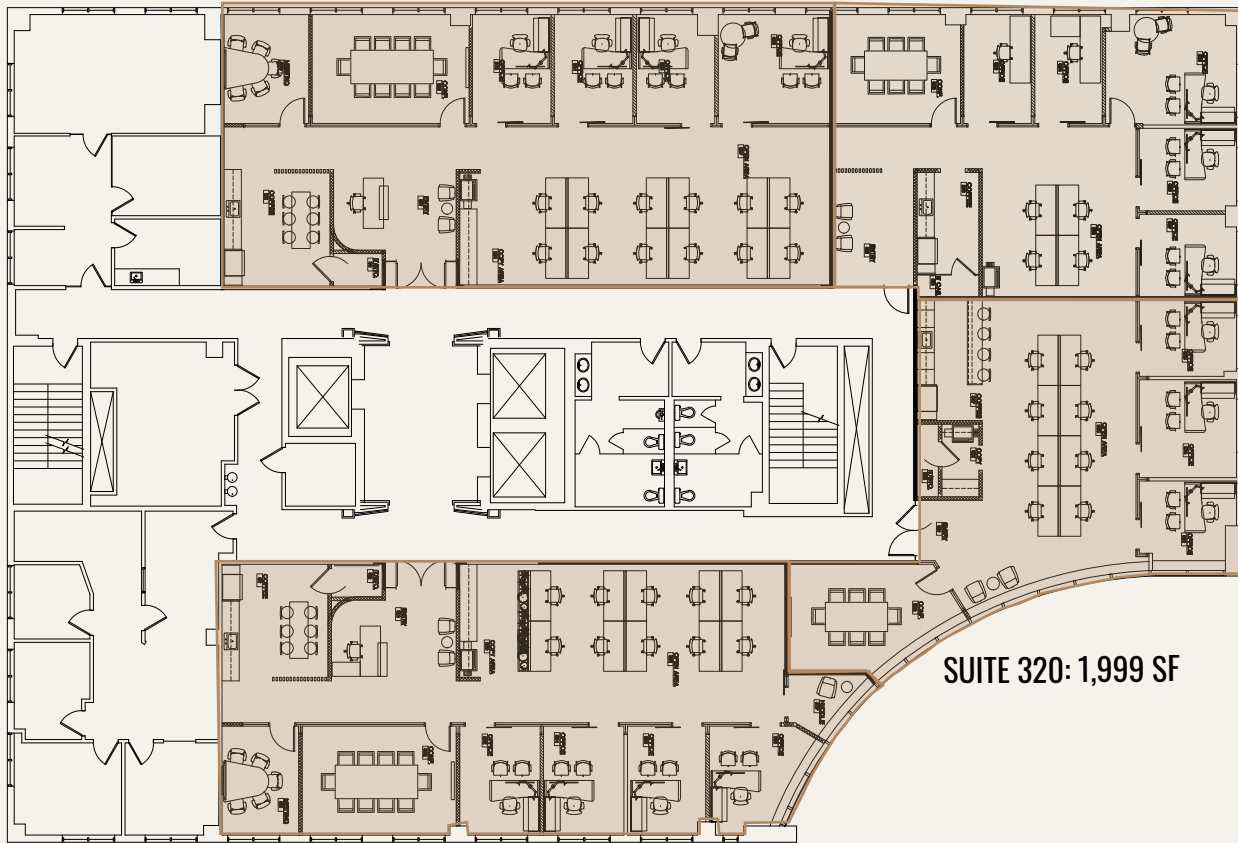
# 925 & 975

SOUTH FEDERAL HWY  
BOCA RATON, FL

## 3rd FLOOR - SPEC SUITES

SUITE 340: 3,032 SF

SUITE 330: 2,103 SF



SUITE 300: 2,934 SF

SUITE 320: 1,999 SF



For more information contact:

**John Criddle**  
Executive Vice President  
+1 561 283 5176  
john.criddle@cbre.com

**Joe Freitas**  
Senior Vice President  
+1 561 512 8844  
joe.freitas@cbre.com

**Maxwell Pawk**  
First Vice President  
+1 561 393 1670  
max.pawk@cbre.com

**Nicholas Mulligan**  
Associate  
+1 561 393 1680  
nicholas.mulligan@cbre.com

 TRIANGLE CAPITAL GROUP

**IPCapital**  
PARTNERS, LLC

**CBRE**