



# For Lease

Stockdale Business Center  
5610-5650 District Blvd  
Bakersfield, CA 93313

## Jason Alexander

Senior Vice President | Principal  
License No. 01360995  
+1 661 631 3818  
jason.alexander@colliers.com

## Cameron Mahoney

Senior Vice President | Principal  
License No. 01937802  
+1 661 631 3814  
cameron.mahoney@colliers.com

## Colliers International

10000 Stockdale Hwy, Suite 102  
Bakersfield, CA 93311  
+1 661 631 3800  
www.colliers.com/bakersfield

*Stockdale Business Center* is located at 5610-5650 District Boulevard, which is located in the Stockdale Industrial Park, Southwest Bakersfield, conveniently just minutes west of Highway 99 with on/off ramps on White Lane to the north and Panama Lane to the south.

## Features & Amenities

- An approximately 133,192 sf industrial/office project
- Consisting of five (5) office/warehouse buildings
- M-2 City of Bakersfield Zoning
- Professional on-site property management
- Concrete tilt-up construction
- Monument signage
- Located in the Stockdale Industrial Park
- Newly installed HVAC systems, buildings have been painted and parking lot has been re-striped and paved
- 10' x 10' roll-up doors - Available in most units
- Separate utilities
- Utilities:
  - Water: California Water Company
  - Electric: PG&E
  - Power: 120/240 Volt, 125 Amp, 3 Phase
  - Gas: PG&E

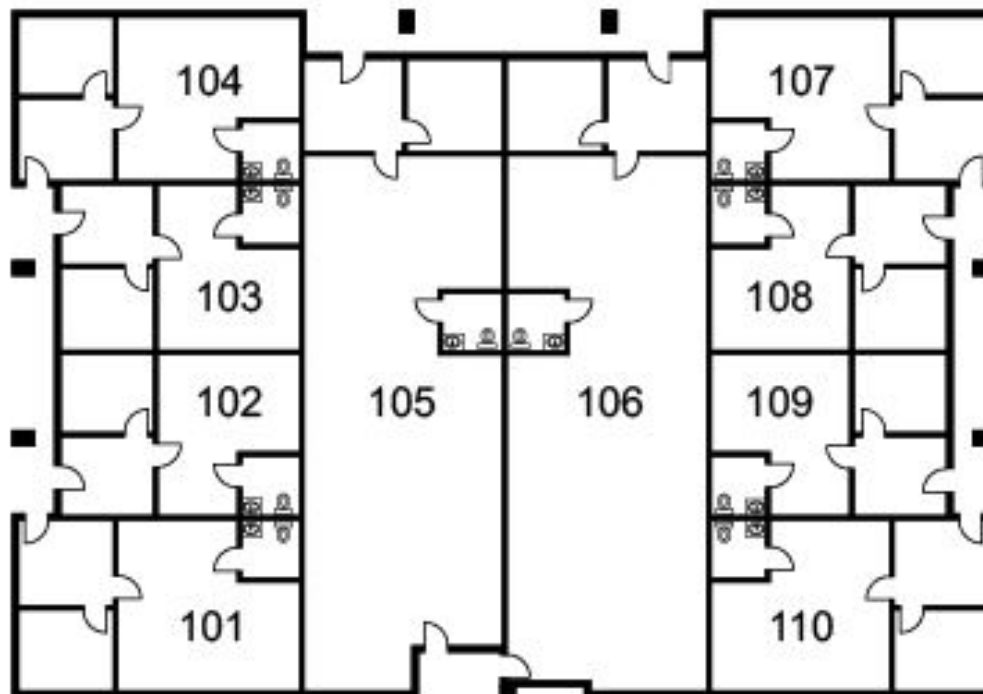




## 5610 District - Availability (APPROX)

Fully Leased

## Floor Plan



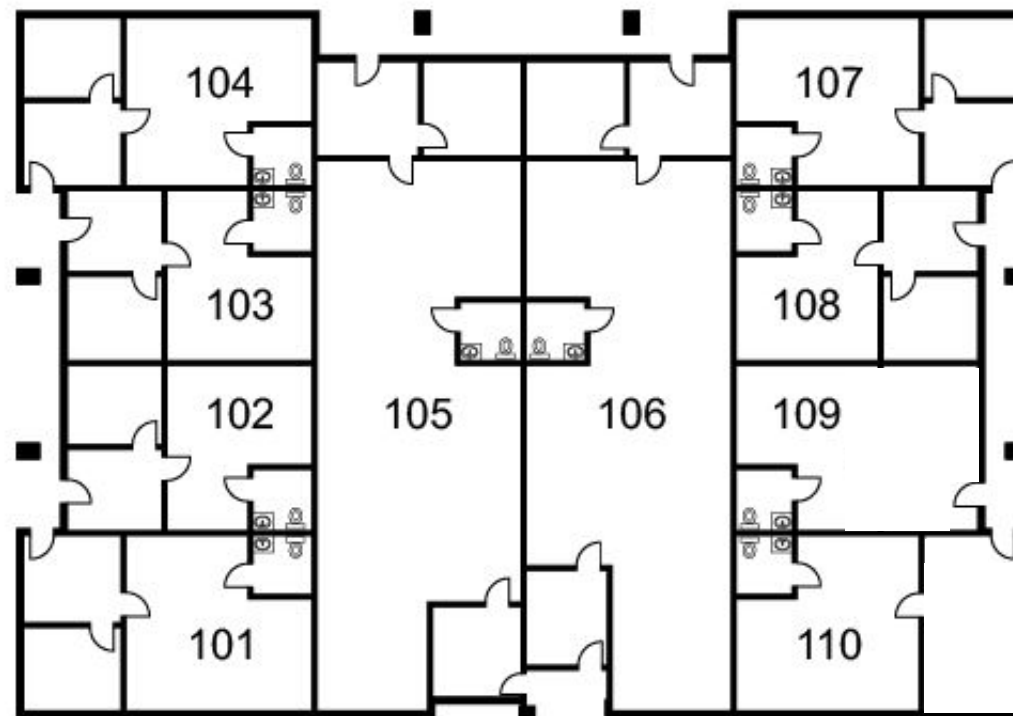
Floor Plan not to scale

# 5620 District - Availability (APPROX)

Fully Leased



## Floor Plan



Floor Plan not to scale

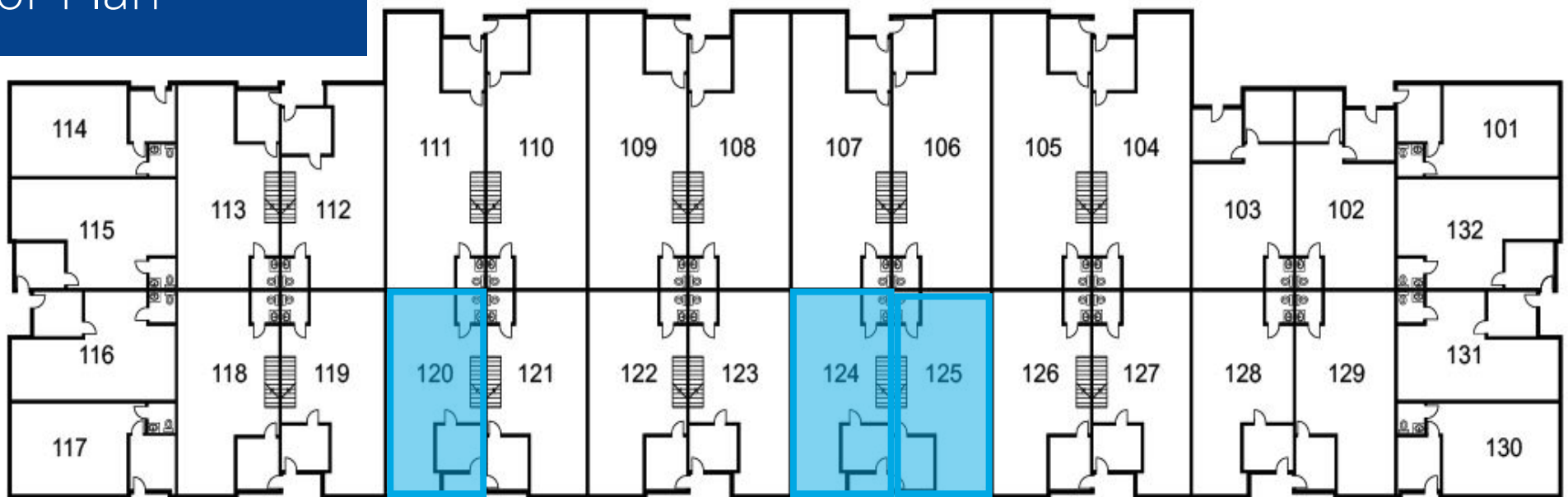


## 5630 District - Availability (APPROX)

5630-Suite 125	1,404 SF	\$1,495/mo + \$125 CAM Fee
5630-Suite 120	1,404 SF	\$1,495/mo + \$125 CAM Fee*
5630-Suite 124	1,404 SF	\$1,495/mo + \$125 CAM Fee

\*Available August 1, 2026

## Floor Plan



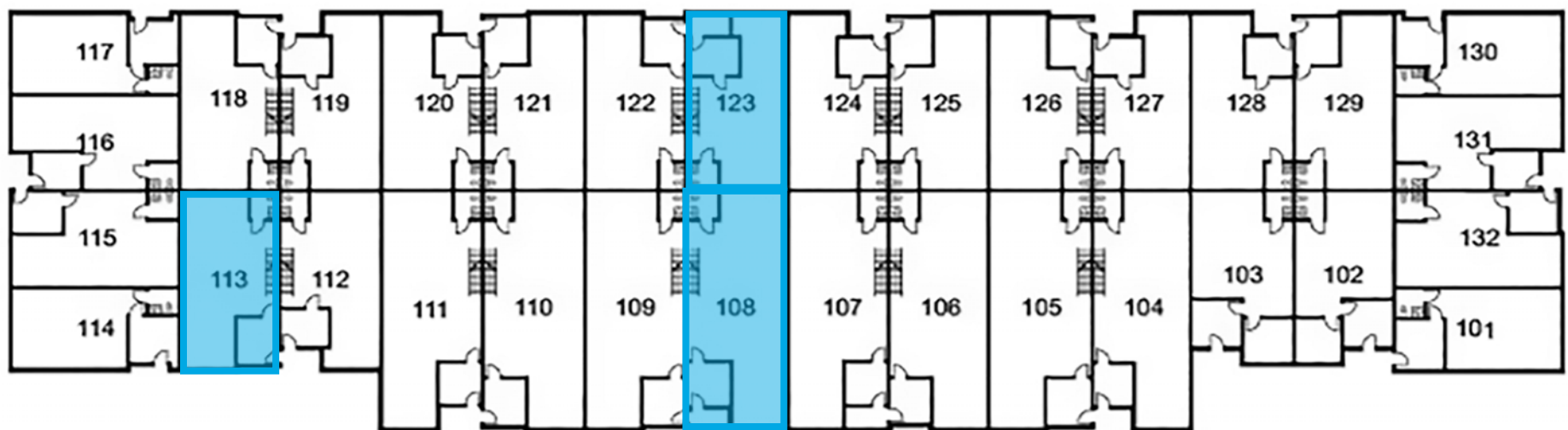
Floor Plan not to scale



## 5640 District - Availability (APPROX)

5640-Suite 108	1,764 SF	\$1,895/mo. + \$125 CAM Fee
5640-Suite 113	1,404 SF	\$1,495/mo + \$125 CAM Fee
5640-Suite 123	1,404 SF	\$1,495/mo. + \$125 CAM Fee

## Floor Plan



Floor Plan not to scale



## 5650 District - Availability (APPROX)

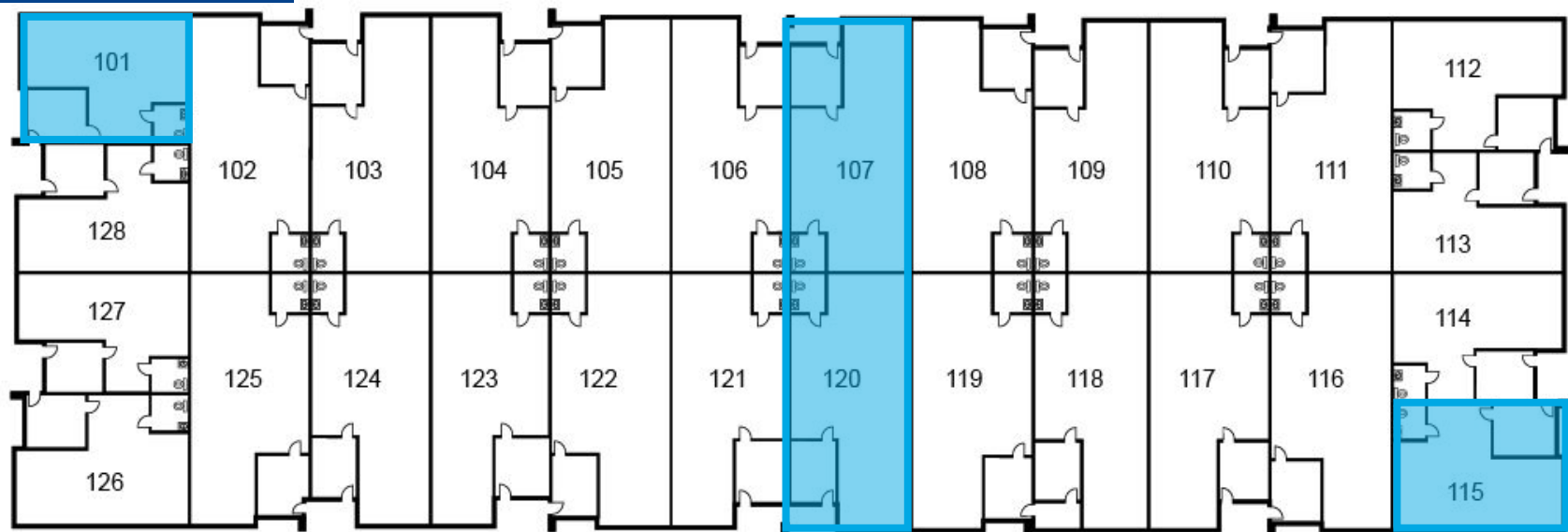
5650 Suite 101	833 SF	\$995/mo. + \$100 CAM Fee**
5650-Suite 107 & 220	2,328 SF	\$2,600/mo. + \$220 CAM Fee*
5650-Suite 115	833 SF	\$995/mo. + \$100 CAM Fee*

\*Available June 1, 2026

\*\*Available July 1, 2026

\*Available September 1, 2026

## Floor Plan



Floor Plan not to scale

# Site Plan



SITE PLAN NOT TO SCALE

White Lane

## Nearby services



Advanced Beverage Company



Professional Floor Layers



Stepping Stones Outpatient Services



Home & Leisure



**Stockdale Business Center**



Grissom Street

District Blvd



Colliers

10000 Stockdale Hwy, Suite 102  
Bakersfield, CA 93311  
P: +1 661 631 3800  
F: +1 661 631 3829  
[colliers.com/bakersfield](http://colliers.com/bakersfield)

**Jason Alexander**

Senior Vice President | Principal  
License No. 01360995  
+1 661 631 3818  
[jason.alexander@colliers.com](mailto:jason.alexander@colliers.com)

**Cameron Mahoney**

Senior Vice President | Principal  
License No. 01937802  
+1 661 631 3814  
[cameron.mahoney@colliers.com](mailto:cameron.mahoney@colliers.com)

This document has been prepared by Colliers International for advertising and general information only. Colliers International makes no guarantees, representations or warranties of any kind, expressed or implied, regarding the information including, but not limited to, warranties of content, accuracy and reliability. Any interested party should undertake their own inquiries as to the accuracy of the information. Colliers International excludes unequivocally all inferred or implied terms, conditions and warranties arising out of this document and excludes all liability for loss and damages arising there from. This publication is the copyrighted property of Colliers International and/or its licensor(s). ©2026. All rights reserved.