

# 1 RADNOR CORPORATE CENTER

23,363 RSF  
SUBLEASE OPPORTUNITY

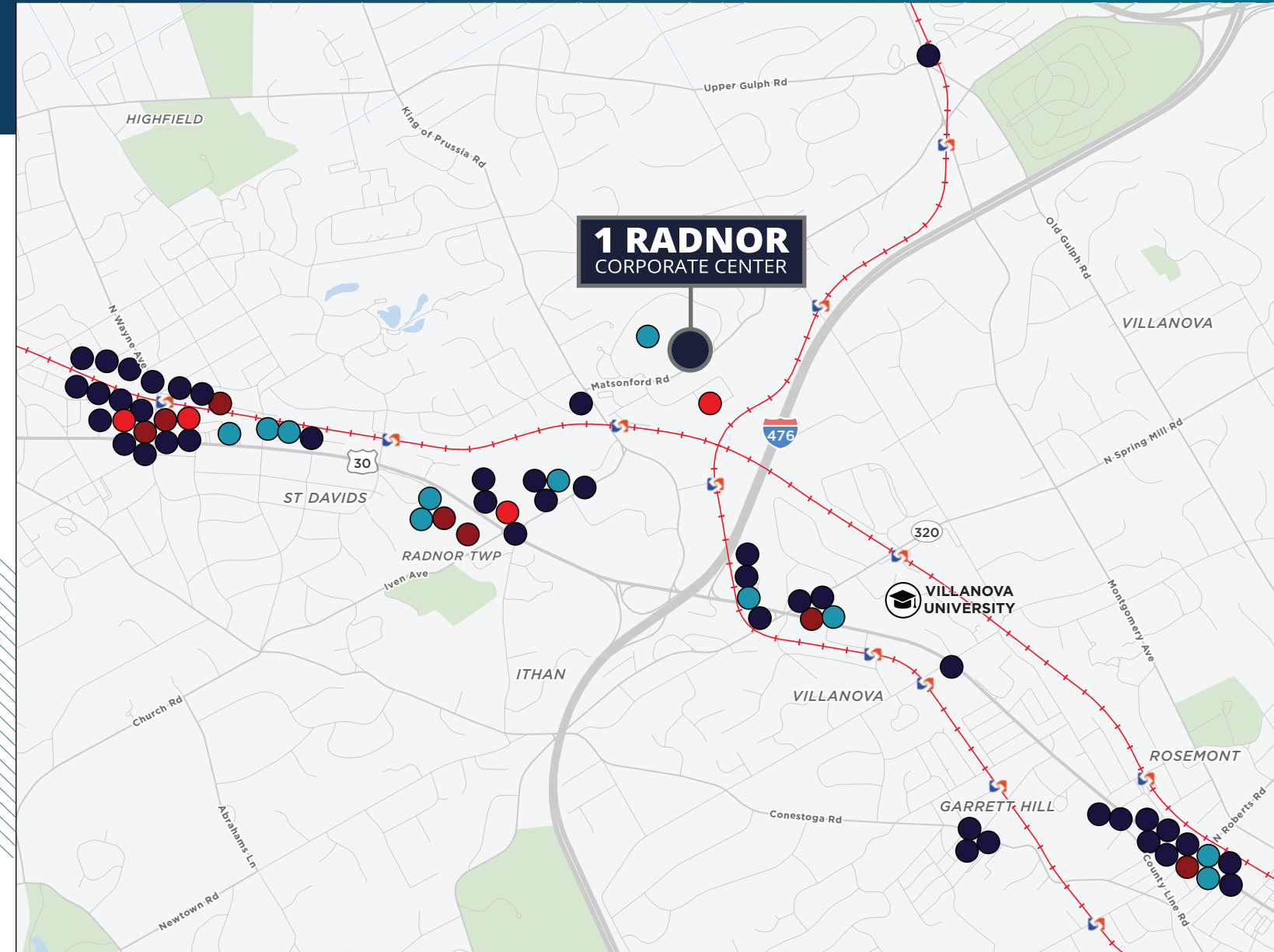


## CAMPUS HIGHLIGHTS

- Communal lobby
- Multiple outdoor meeting spaces
- Fitness center
- Conference center
- Property manager on-site
- Tenant portal/app
- Transportation accessible



# ACCESS AND AMENITIES



**42+**  
RESTAURANTS

**7+**  
SHOPPING

**11+**  
GRAB-N-GO

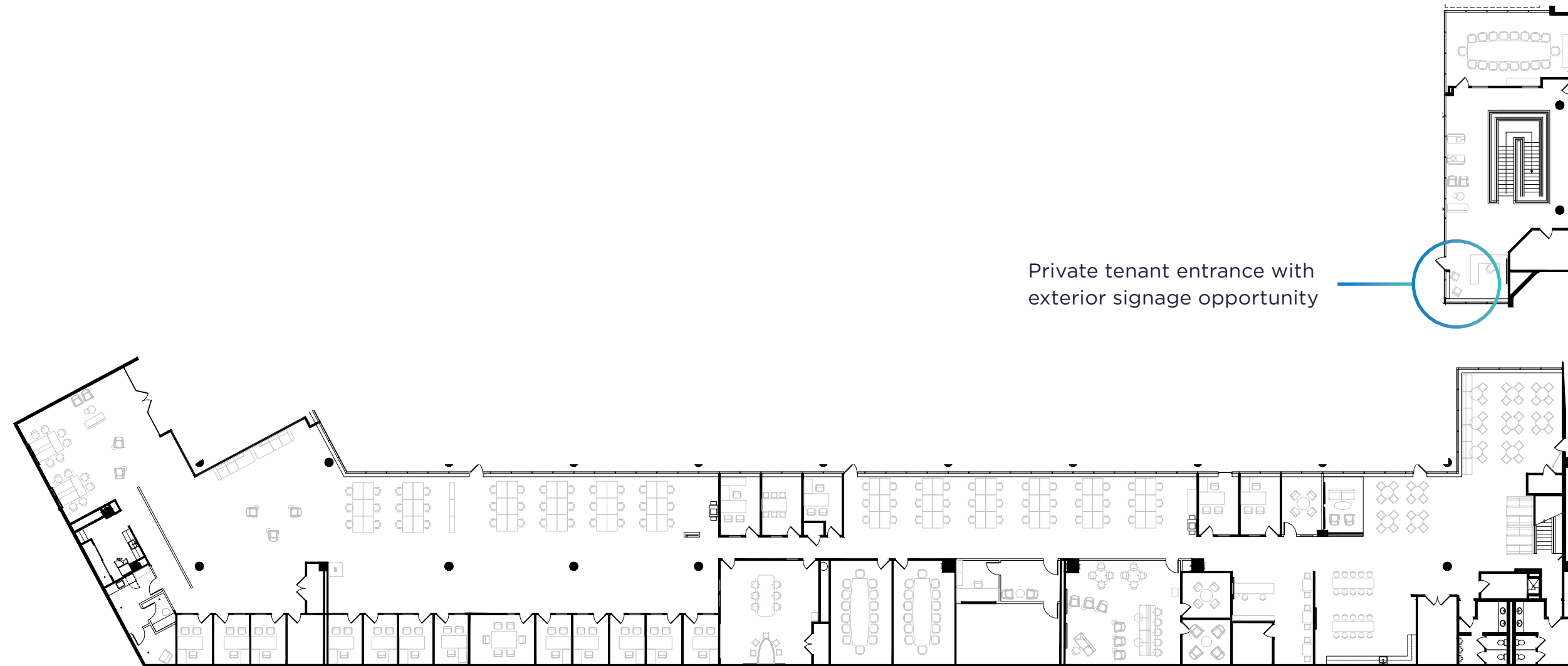
**4+**  
HOTELS



# FLOORPLANS

SIZE: 23,363 RSF

EXP. DATE: 2/29/2028

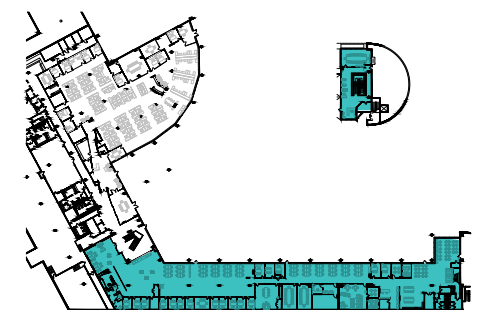


Private tenant entrance with exterior signage opportunity

- 18** Offices
- 74** Workstations
- 93** Total seats
- 4** Small conference rooms
- 4** Large conference rooms
- 2** Adaptable town hall areas
- 1** Sound proof media studio

## SUITE HIGHLIGHTS

- Furniture available upon request
- Adaptable town hall spaces for gatherings and events
- Soundproof media studio for recording and streaming
- Dedicated private tenant entrance
- Prominent building signage opportunity
- Conference rooms, including an executive boardroom





# PREMIER CLASS A OFFICE FACILITY

LOCATED WITHIN THE EXPANSIVE RADNOR CORPORATE CENTER



For more information, please contact:

**PAUL GARVEY**

paul.garvey@cushwake.com  
(215) 963-4013

**FRANK PALOPOLI**

frank.palopoli@cushwake.com  
(215) 963-4015

