

FOR LEASE

# 515fig

*Prime Retail Opportunity in  
DTLA Office High-Rise Building*

## *Second Floor Retail*

515 S FIGUEROA ST, LOS ANGELES, CA 90071 | SUITE 200

**CBRE**

# Property Highlights



Prime retail opportunity on coveted Figueroa Corridor, within 1 block of 5 million square feet of office space.



Prominent glass building front, providing ample frontage along this highly trafficked intersection of over 45,000 cars per day.



2,113 SF on ground floor, with entrances to the front and building lobby, enabling easy access for clients.

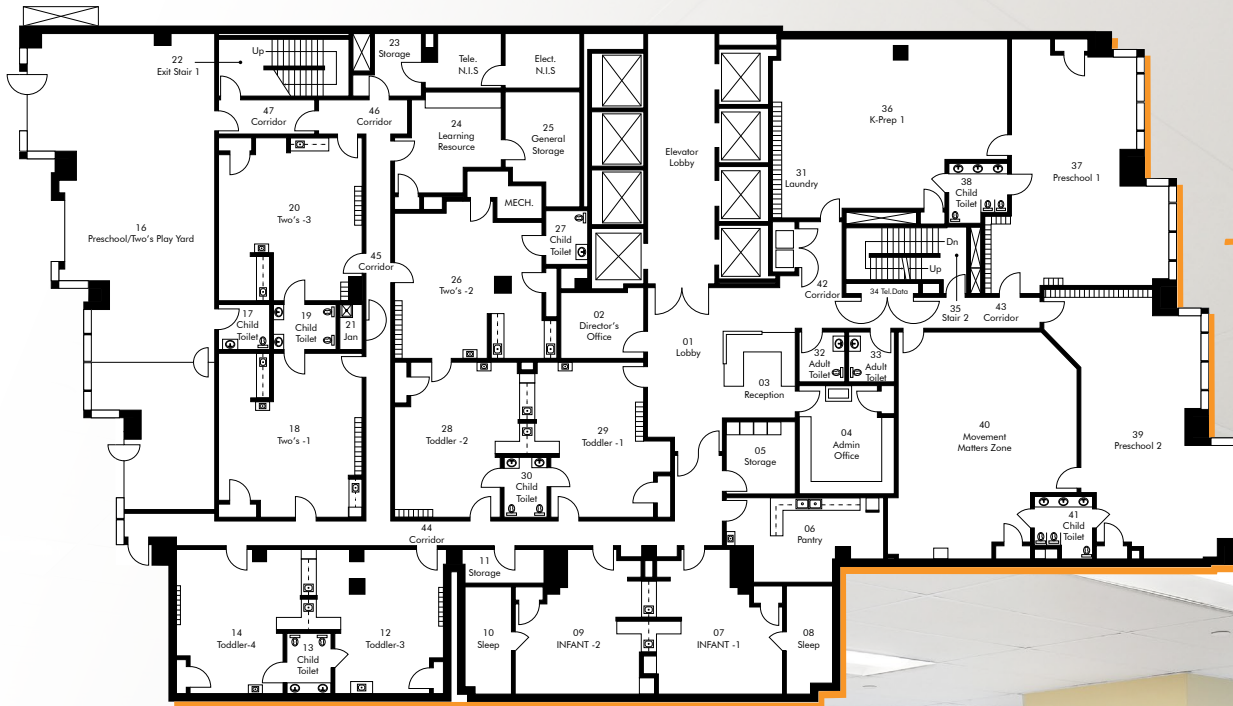


Centralized in downtown LA which serves over 340,000 employees on a daily basis and is home to over 85,000 residents (and growing).



Daytime Building Occupancy ranges from 75% - 80%



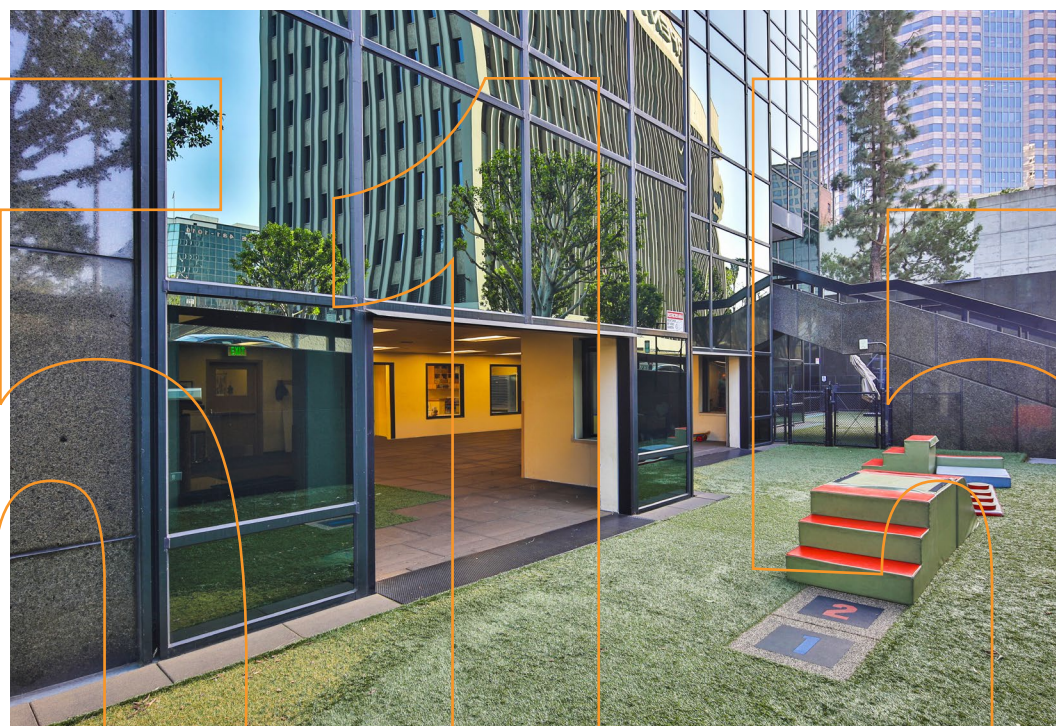


# *Envision Your Space*

- 16,906 SF
- Suite 200 / 2nd Floor space (formerly Bright Horizons Children's Center)
- \$39.13 MG / SF / Year



# Property Photos





# 515th

LOS ANGELES

110

101

**INTERCONTINENTAL**  
HOTELS & RESORTS

**FIGAT7TH**

**FOGO DE CHÃO**  
BRAZILIAN STEAKHOUSE

**THE BLOC**

**BOTTEGA LOUIE**

**WHOLE FOODS**  
MARKET

*Clifton's*

**little damage**  
SOFT SERVED ICE CREAM

**D-TOWN BURGER BAR**  
*SILVERLAKE Ramen* *Joe's Pizza*

**Pizza Hut**  
**SUBWAY**

**WESTIN**  
HOTELS & RESORTS

**CITY NATIONAL PLAZA**

**LOS ANGELES PUBLIC LIBRARY**

**Hilton**  
HOTELS & RESORTS

**DOWNTOWN LOS ANGELES**

**THE CROCKER CLUB**  
**THE LAST BOOKSTORE**

**BERLIN CURRYWURST**  
*gget McConnell's* FINE ICE CREAMS  
**eggslut** **HORSE THIEF** **Olio** wood fired pizzeria

*Mrs. fish*  
**PERCH**

**DTLA**  
Bikes

**citizen**

**THE PETIT PARIS**

**SEÑOR FISH**

*Badmaash* बढमाश

**THE CONTINENTAL CLUB**  
**BAR AMÁ** *Orsa & Winston*

**Sushi Zo Zo**  
**Simply Salad**  
CUSTOM GREENS

**Blossom Vietnamese Restaurant**

**KAZU NORI**  
**BIGMANBAKES**

**LAS PERLAS**  
**REDLINE**

**the association**

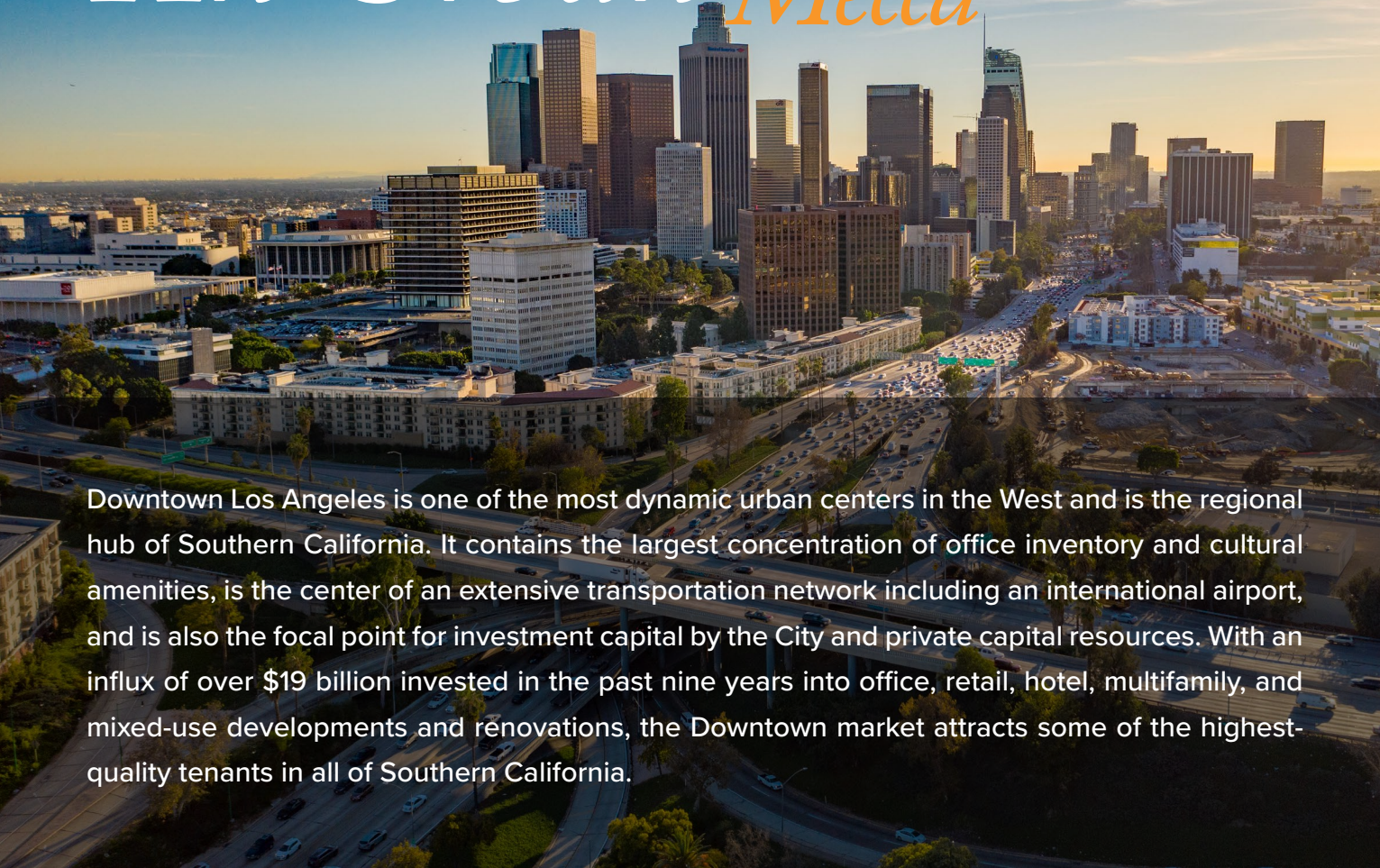
**BEELMAN'S**

**MIGNON** **COLE'S**

**THE WOLVES**  
*Guisados* *ULI'S Gelato*  
**BLU JAM CAFE** **CLAYTON'S PUBLIC HOUSE**

*Join High-End Retail and Services*

# An Urban Mecca



Downtown Los Angeles is one of the most dynamic urban centers in the West and is the regional hub of Southern California. It contains the largest concentration of office inventory and cultural amenities, is the center of an extensive transportation network including an international airport, and is also the focal point for investment capital by the City and private capital resources. With an influx of over \$19 billion invested in the past nine years into office, retail, hotel, multifamily, and mixed-use developments and renovations, the Downtown market attracts some of the highest-quality tenants in all of Southern California.



# Your Clients



**75,575**  
POPULATION



PRODUCTION &  
TRANSPORTATION



**35**  
MEDIAN AGE



OFFICE &  
ADMINISTRATIVE  
SUPPORT



**48,028**  
HOUSEHOLDS



BUSINESS &  
SALES



515 S FIGUEROA ST, LOS ANGELES, CA 90071 | RETAIL SUITE 200

# 515fig

*Call +1 213 613 3272*

**DERRICK MOORE**

Lic. 01029938  
derrick.moore@cbre.com

**DIANDRA DILLON**

Lic. 02210049  
diandra.dillon@cbre.com

**SHIHO TAKEI MOORE**

Lic. 02224981  
shiho.moore@cbre.com

© 2026 CBRE, Inc. All rights reserved. This information has been obtained from reliable sources but has not been verified for accuracy or completeness. CBRE, Inc. makes no guarantee, representation, or warranty and accepts no responsibility or liability for the accuracy, completeness, or reliability of the information contained herein. You should conduct a careful, independent investigation of the property and verify all information. Any reliance on this information is solely at your own risk. CBRE and the CBRE logo are service marks of CBRE, Inc. All other marks displayed on this document are the property of their respective owners, and the use of such marks does not imply any affiliation with or endorsement of CBRE. Photos herein are the property of their respective owners. Use of these images without the express written consent of the owner is prohibited.

**CBRE**