

# OLD OAKLAND



## FEATURES

- +/- 5,828 RSF
- Abundant natural light
- Operable windows
- 12-14' high ceilings
- Two kitchenettes
- Full HVAC
- Secure on-site parking garage
- Secure lobby entry and elevator



## SECOND LEVEL

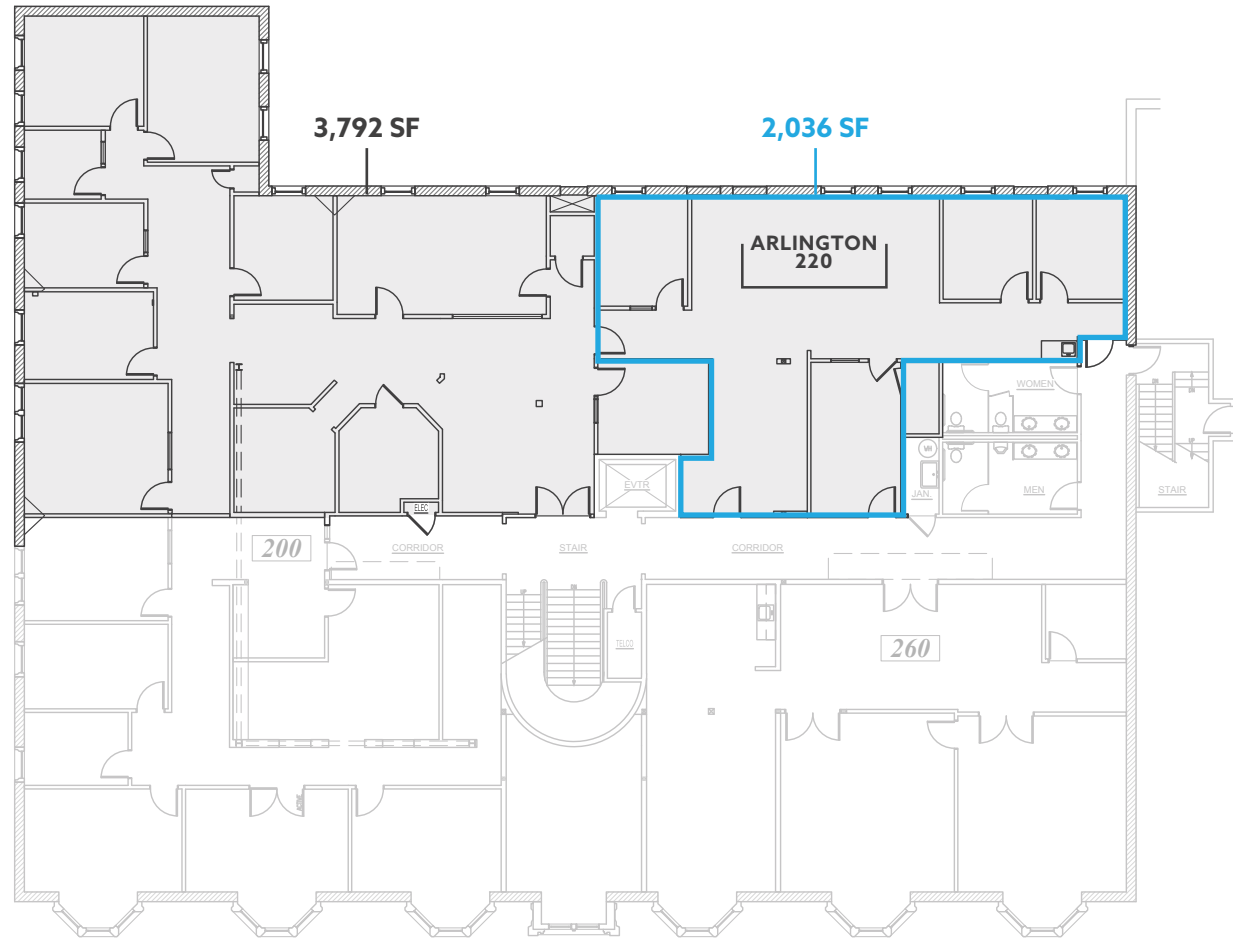
492 9th Street

Arlington Building | Suite 220

CBRE

Arlington Building | Suite 220  
**5,828 RSF**

**OLD OAKLAND**



## OFFICE LEASING

**ANNE CECCONI** [anne.cecconi@cbre.com](mailto:anne.cecconi@cbre.com) / 510 229 7509

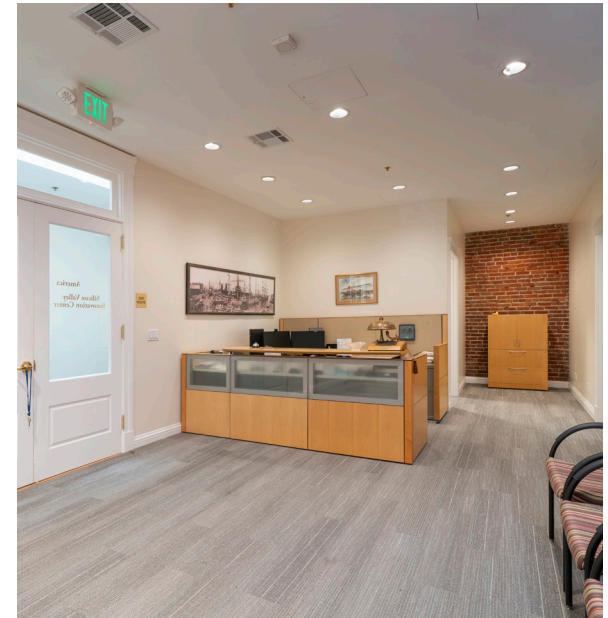
**TRENT HOLSMAN** [trent.holsman@cbre.com](mailto:trent.holsman@cbre.com) / 510 604 5506

**LIAM FARRELL** [liam.farrell1@cbre.com](mailto:liam.farrell1@cbre.com) / 360 949 3140

**\* SPACE IS DIVISIBLE TO  
2,036SF AND 3,792SF**

**CBRE**

# OLD OAKLAND



## FEATURES

- 2,570 RSF
- Brick and timber
- Abundant natural light
- Conference room
- Operable windows
- Ceiling height ~10'
- Full HVAC

**SECOND LEVEL**

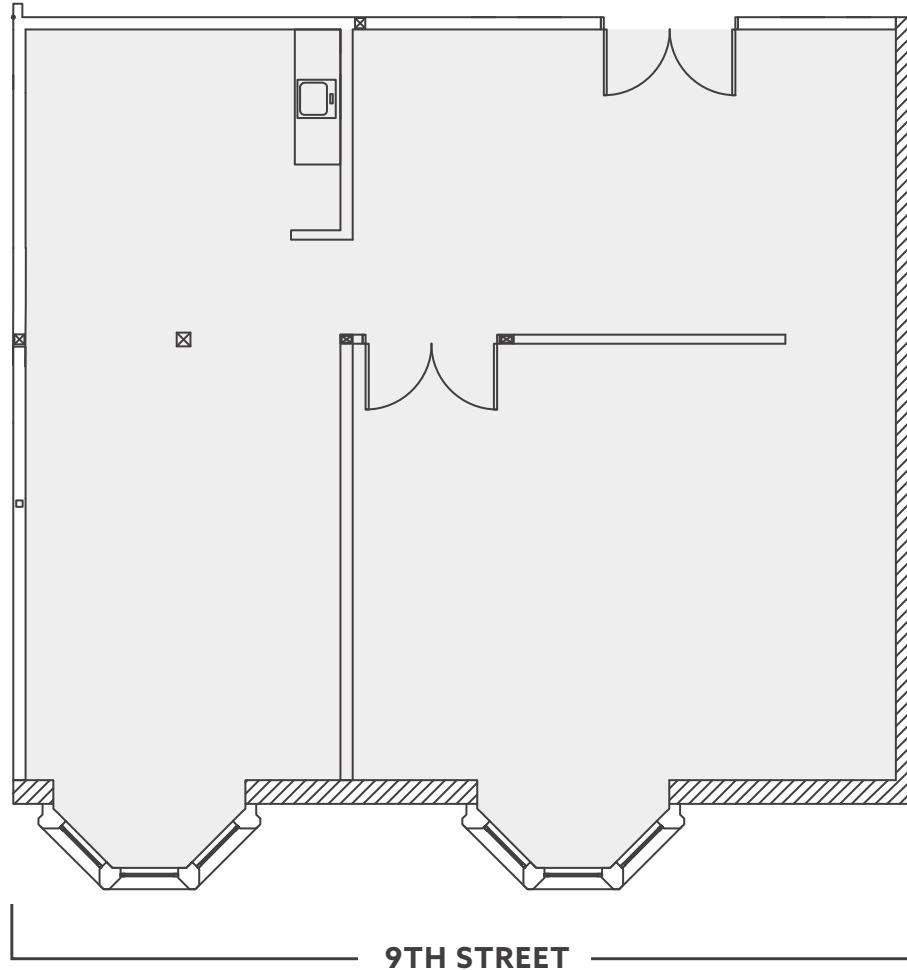
**492 9th Street**

**Arlington Building | Suite 240**

**CBRE**

Arlington Building | Suite 240  
**2,570 RSF**

**OLD OAKLAND**



## OFFICE LEASING

**ANNE CECCONI** [anne.cecconi@cbre.com](mailto:anne.cecconi@cbre.com) / 510 229 7509

**TRENT HOLSMAN** [trent.holsman@cbre.com](mailto:trent.holsman@cbre.com) / 510 604 5506

**LIAM FARRELL** [liam.farrell1@cbre.com](mailto:liam.farrell1@cbre.com) / 360 949 3140

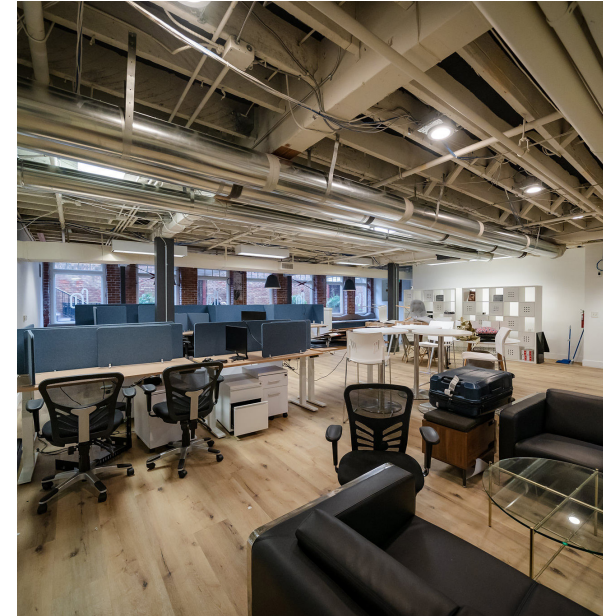
**CBRE**

# OLD OAKLAND



## FEATURES

- +/- 3,644 RSF
- Brick and timber
- Abundant natural light
- Full HVAC
- Outdoor patio
- Direct parking garage access



## GARDEN LEVEL

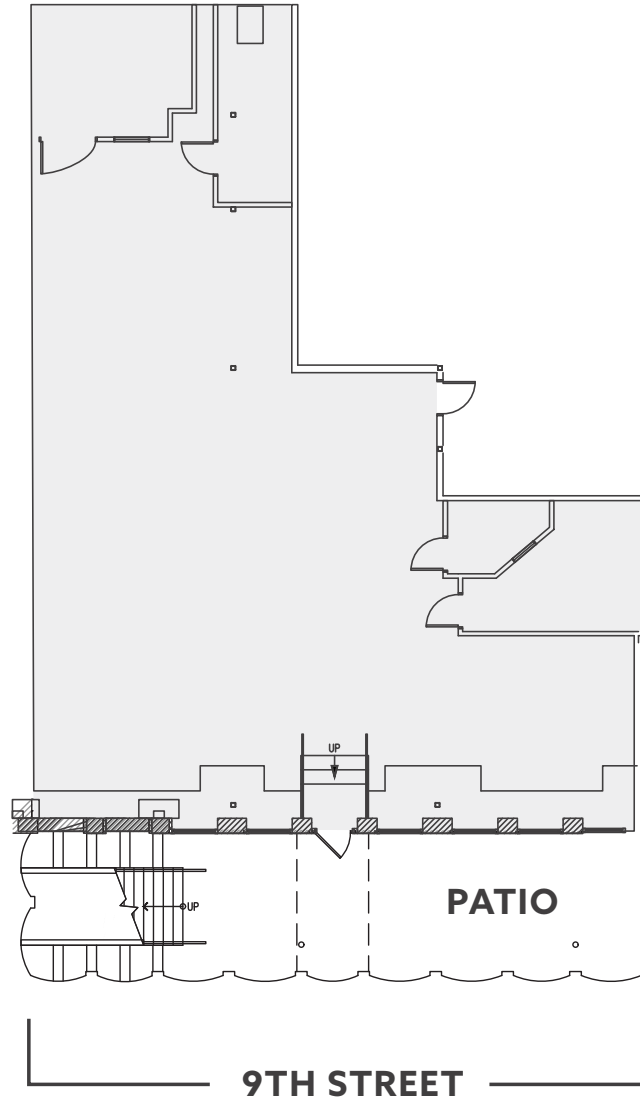
492 9th Street

Arlington Building | Garden

CBRE

Arlington Building | Garden  
**3,644 RSF**

**OLD OAKLAND**



[CLICK FOR VIRTUAL TOUR ▶](#)

## OFFICE LEASING

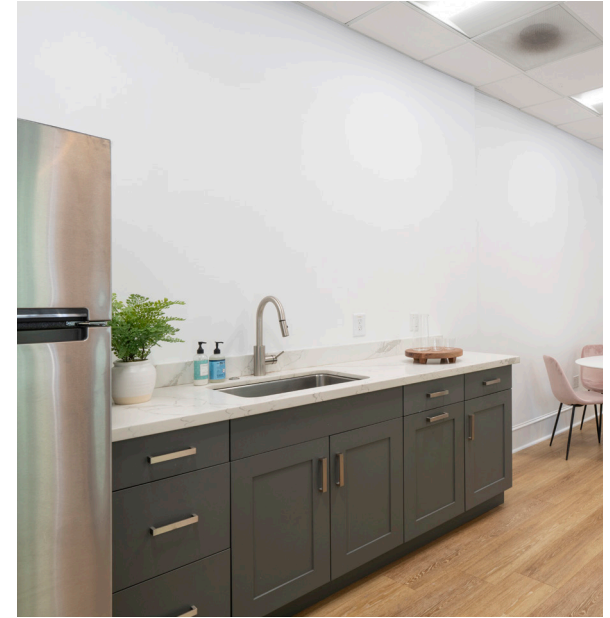
**ANNE CECCONI** [anne.cecconi@cbre.com](mailto:anne.cecconi@cbre.com) / 510 229 7509

**TRENT HOLSMAN** [trent.holsman@cbre.com](mailto:trent.holsman@cbre.com) / 510 604 5506

**LIAM FARRELL** [liam.farrell1@cbre.com](mailto:liam.farrell1@cbre.com) / 360 949 3140

**CBRE**

# OLD OAKLAND



## FEATURES

- +/- 2,010 RSF
- 12-14' high ceilings
- Abundant natural light
- Brick and timber
- Operable windows
- Full HVAC
- Kitchenette
- Two offices

**SECOND LEVEL**

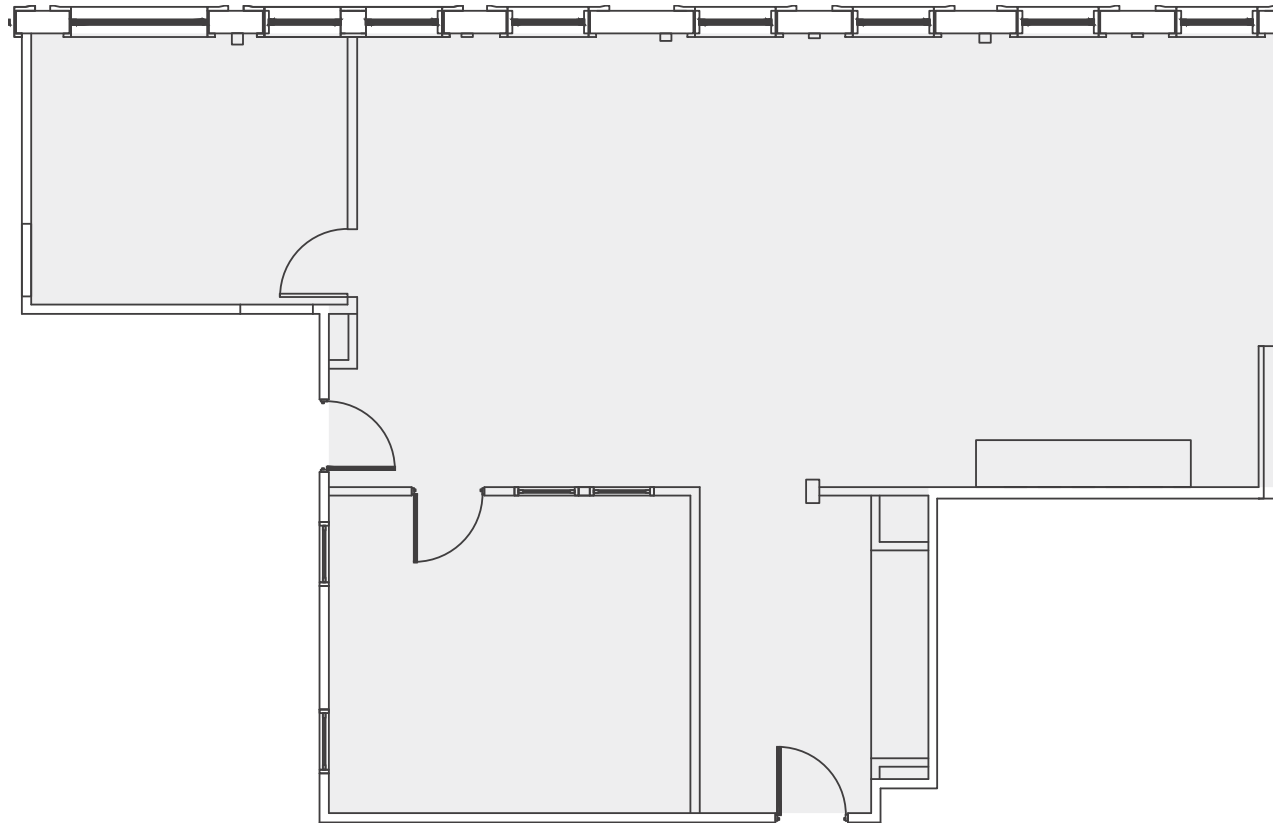
**827 Broadway**

**Wilcox Building | Suite 210**

**CBRE**

Wilcox Building | Suite 210  
**2,010 RSF**

**OLD**  
**OAKLAND**



[CLICK FOR VIRTUAL TOUR ▶](#)

## OFFICE LEASING

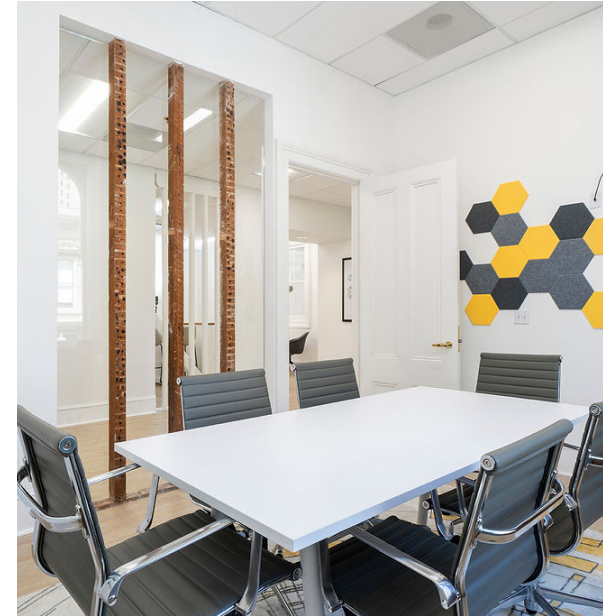
**ANNE CECCONI** [anne.cecconi@cbre.com](mailto:anne.cecconi@cbre.com) / 510 229 7509

**TRENT HOLSMAN** [trent.holsman@cbre.com](mailto:trent.holsman@cbre.com) / 510 604 5506

**LIAM FARRELL** [liam.farrell1@cbre.com](mailto:liam.farrell1@cbre.com) / 360 949 3140

**CBRE**

# OLD OAKLAND



## FEATURES

- +/- 3,744 RSF
- 12-14' high ceilings
- Abundant natural light
- Brick and timber
- Operable windows
- Full HVAC
- Kitchenette
- Multiple offices & conference rooms
- Fully-furnished; move-in ready



**SECOND LEVEL**

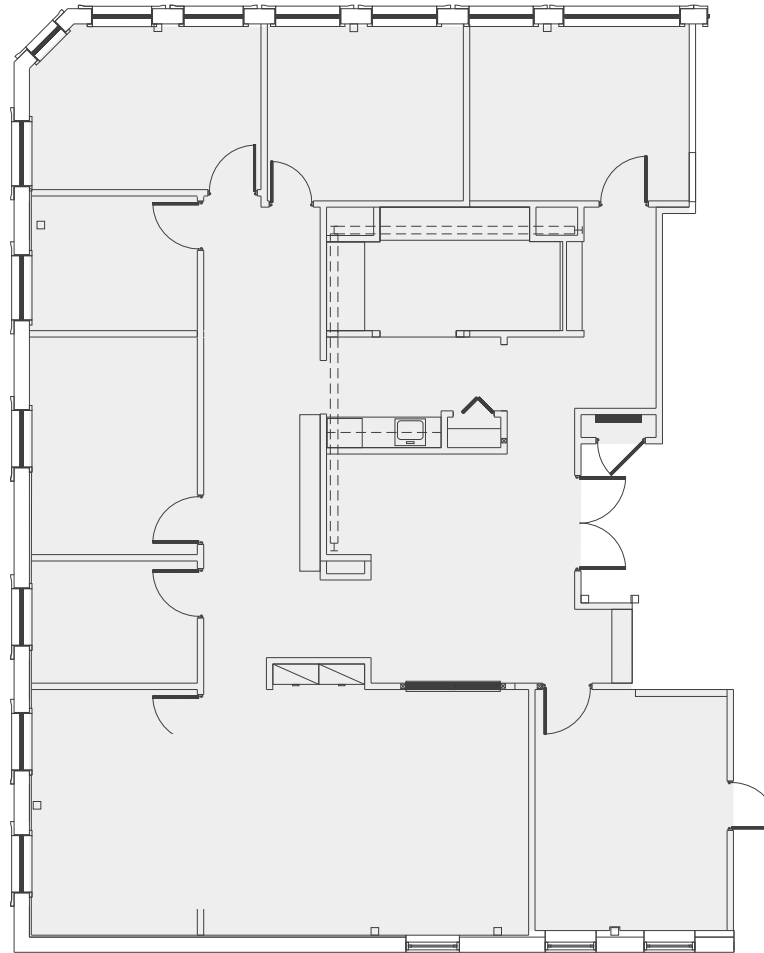
**827 Broadway**

**Wilcox Building | Suite 200**

**CBRE**

Wilcox Building | Suite 200  
**3,744 RSF**

**OLD**  
**OAKLAND**



[CLICK FOR VIRTUAL TOUR ▶](#)

## OFFICE LEASING

**ANNE CECCONI** [anne.cecconi@cbre.com](mailto:anne.cecconi@cbre.com) / 510 229 7509

**TRENT HOLSMAN** [trent.holsman@cbre.com](mailto:trent.holsman@cbre.com) / 510 604 5506

**LIAM FARRELL** [liam.farrell1@cbre.com](mailto:liam.farrell1@cbre.com) / 360 949 3140

**CBRE**

# OLD OAKLAND



## FEATURES

- +/- 1,383 RSF
- Open floorplan with conference room
- Abundant natural light
- Courtyard facing
- Ceiling height ~15'
- Private restroom
- Full HVAC

## FIRST LEVEL

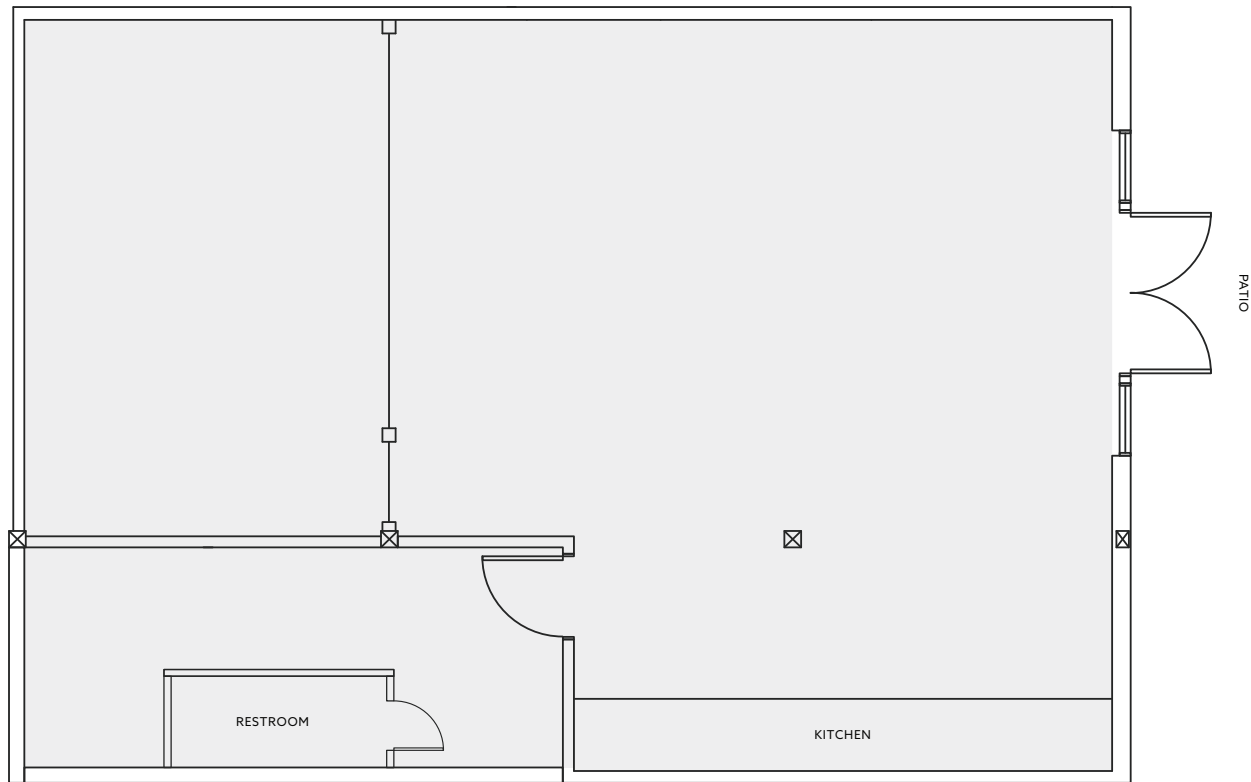
459 9th Street

Gladstone Building | Suite 100b

CBRE

Gladstone Building | Suite 100b  
**1,383 RSF**

**OLD OAKLAND**



## OFFICE LEASING

**ANNE CECCONI** [anne.cecconi@cbre.com](mailto:anne.cecconi@cbre.com) / 510 229 7509

**TRENT HOLSMAN** [trent.holsman@cbre.com](mailto:trent.holsman@cbre.com) / 510 604 5506

**LIAM FARRELL** [liam.farrell1@cbre.com](mailto:liam.farrell1@cbre.com) / 360 949 3140

**CBRE**