

# FOR LEASE

**8,700 Sqft**

7460-7580 NW 82<sup>nd</sup> ST | MEDLEY, FL 33166

**UNIT #7500**

Kevin Perez

(786) 657-6736

kevin@thehypegroup.com

Raul Pino

(786) 503-5583

raul@thehypegroup.com



## PROPERTY



Positioned in Lower Medley's core industrial pocket, this standalone asset offers a clean, efficient canvas for logistics and light production teams. The layout supports smooth day-to-day operations with intuitive circulation for staff and vehicles, while the on-site office component keeps supervision close to the floor. Infill location and straightforward functionality make it a practical choice for companies seeking reliable throughput, easy scheduling, and a professional image without excess complexity.

## HIGHLIGHTS

- 8,700 SF warehouse
- (3) drive-in bays
- 19' clear height
- ~1,500 SF dedicated outdoor area
- (5) parking spaces
- Zoning: M-1 / 7100 Industrial – Light Mfg.
- Minutes to Palmetto Expy & Okeechobee Rd.



## LOCATION & ACCESS

Central Miami address along an east-west artery with quick I-95 access, frequent bus service on NW 54th St, and short connections to the Jackson/UM Health District, MDC-Medical Campus, and core job centers in Allapattah/Wynwood—plus everyday retail and services minutes away, a neighborhood park directly across the street, and roughly 8 miles to MIA for regional convenience.

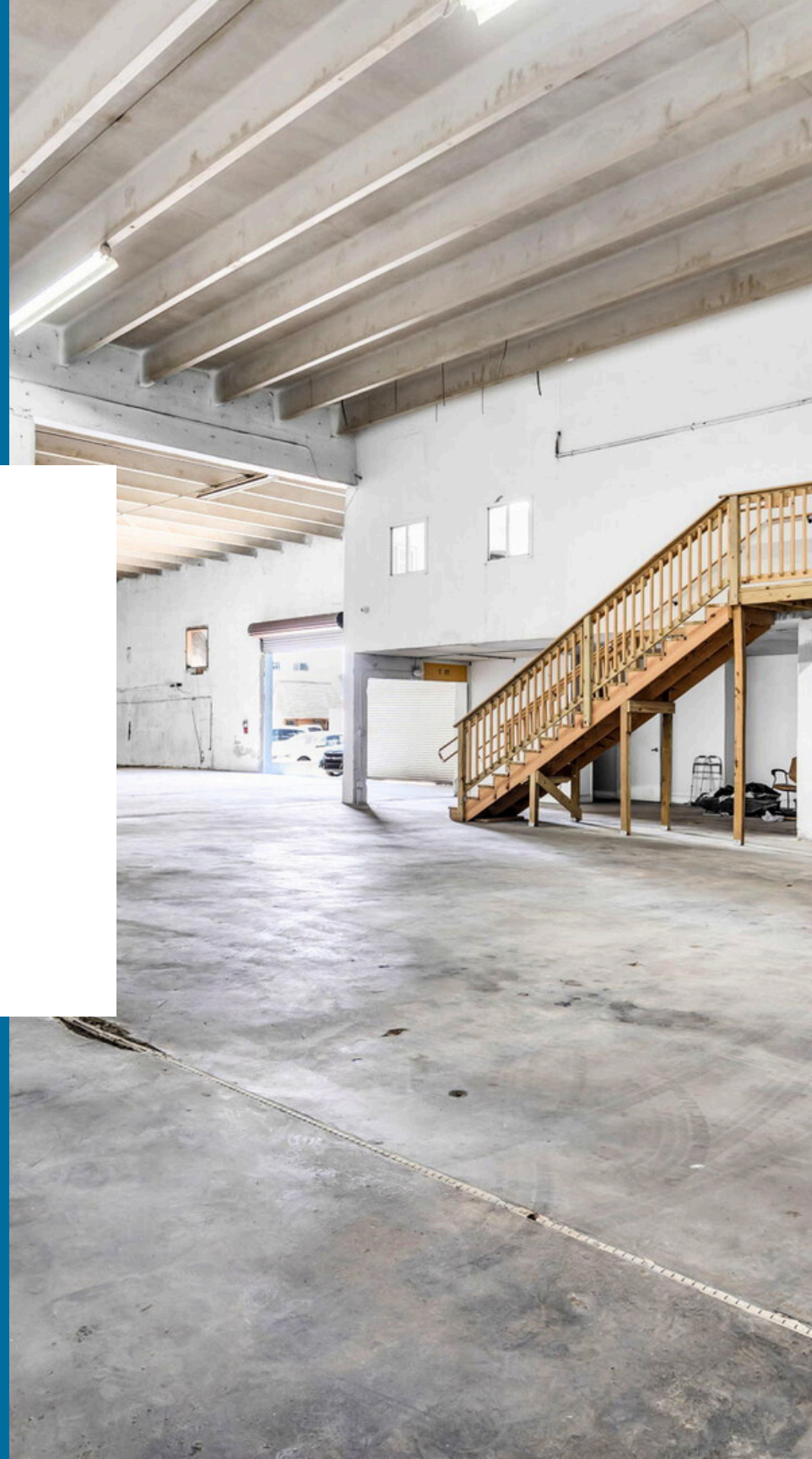


# DETAILS

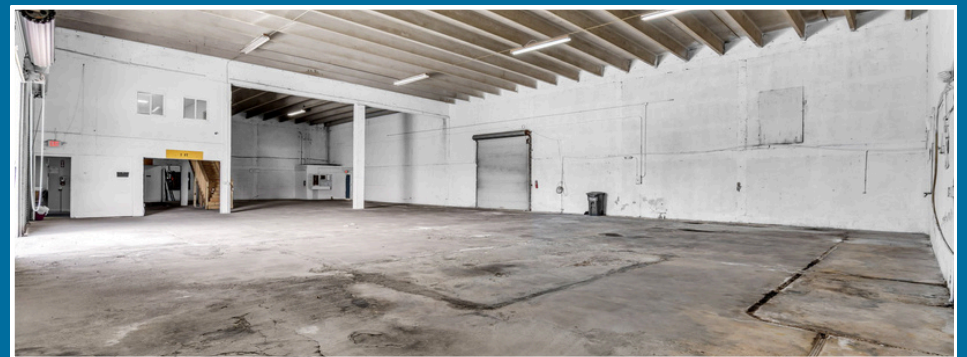
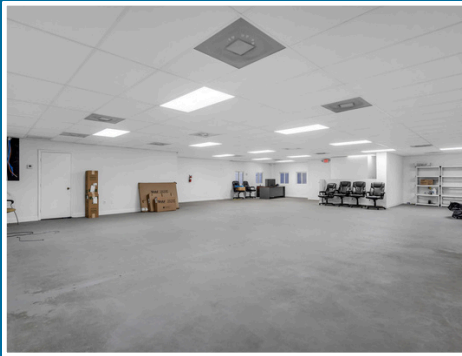
Price: **\$19.00 Sqft/Yr NNN**

Suite: **# 7500**

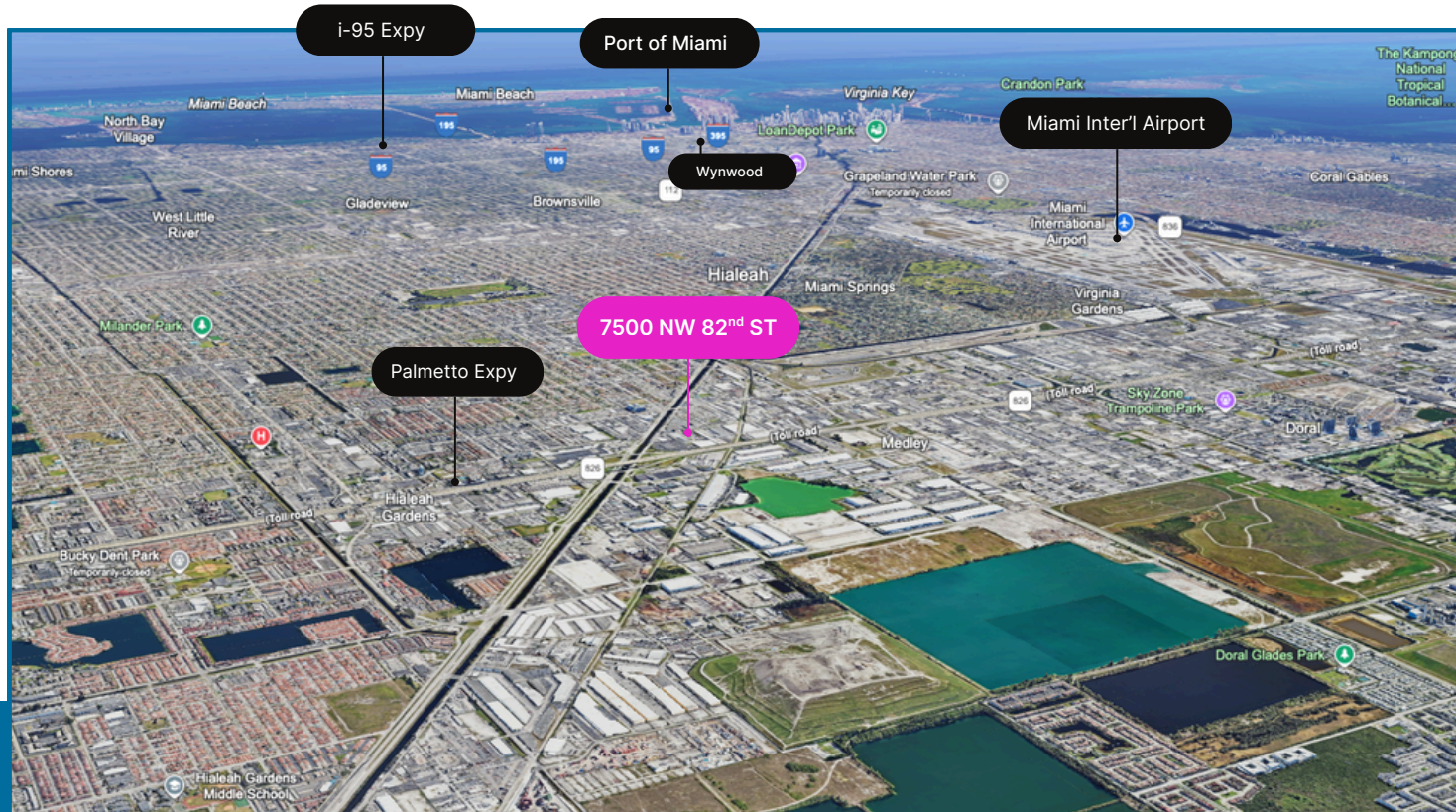
Size: **8,700 Sqft**



# PROPERTY PHOTOS



# Distance & Drive Time



◆ **Nearest I-95 Express Entrance**

Miles: ~8.9 mi  
Drive time: ~18-25 min

◆ **Nearest Palmetto Expy Entrance (SR-826)**

Miles: ~0.7 mi  
Drive time: ~3-6 min

◆ **Miami Inter'l Airport (MIA)**

Miles: ~4.3 mi  
Drive time: ~10-15 min

◆ **Wynwood**

Miles: ~8.2 mi  
Drive time: ~20-30 min

◆ **Port of Miami**

Miles: ~10 mi  
Drive time: ~25-35 min

# CONTACT US!

**Kevin Perez**

(786) 657-6736  
kevin@thehypegroup.com

**Raul Pino**

(786) 503-5583  
raul@thehypegroup.com



## Disclaimer

All information provided in this marketing material is sourced from reliable channels and is subject to errors, omissions, changes, or withdrawal of listings from sale or lease without notice. All square footage, dimensions, floor plans, and technical specifications are approximate and should be independently verified.

