

MEDICAL & OFFICE SPACE FOR LEASE

GODWIN MEDICAL OFFICE PARK SUFFOLK, VIRGINIA | 23434

1005 Commercial Lane



3009 Corporate Lane



HARVEY LINDSAY
COMMERCIAL REAL ESTATE

999 Waterside Drive • Suite 1400
Norfolk, Virginia 23510
757-640-8700
www.HarveyLindsay.com

CONTACT:

PETER D. ABRAHAM, CCIM
(757) 640-8226
peterabraham@harveylindsay.com

OFFICE SPACE FOR LEASE

3005 CORPORATE LANE
SUFFOLK, VIRGINIA | 23434

3005 Corporate Lane



HARVEY LINDSAY
COMMERCIAL REAL ESTATE

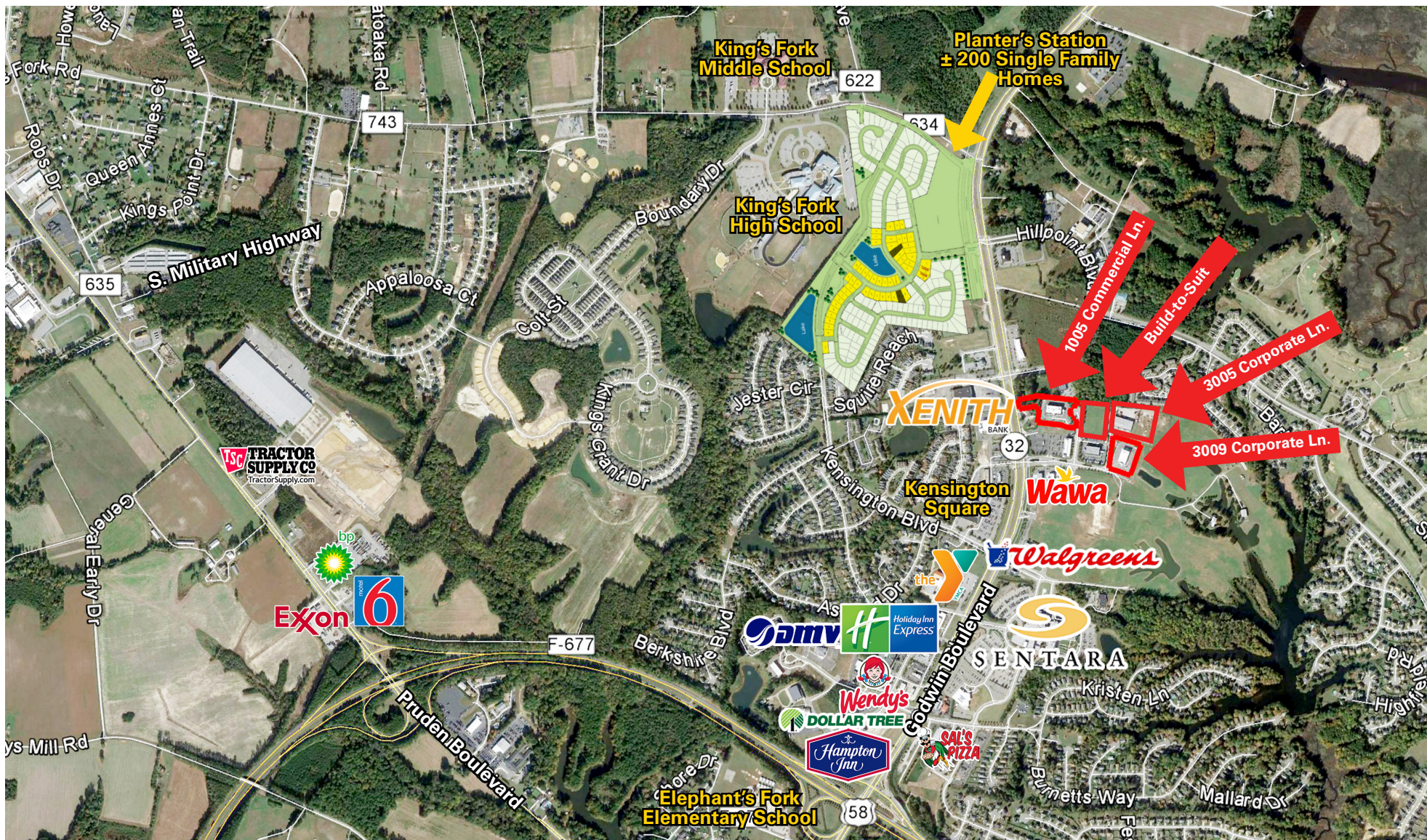
999 Waterside Drive • Suite 1400
Norfolk, Virginia 23510
757-640-8700
www.HarveyLindsay.com

CONTACT:

PETER D. ABRAHAM, CCIM
(757) 640-8226
peterabraham@harveylindsay.com

MEDICAL & OFFICE SPACE FOR LEASE

GODWIN MEDICAL OFFICE PARK SUFFOLK, VIRGINIA | 23434



HARVEY LINDSAY
COMMERCIAL REAL ESTATE

999 Waterside Drive • Suite 1400
Norfolk, Virginia 23510
757-640-8700
www.HarveyLindsay.com

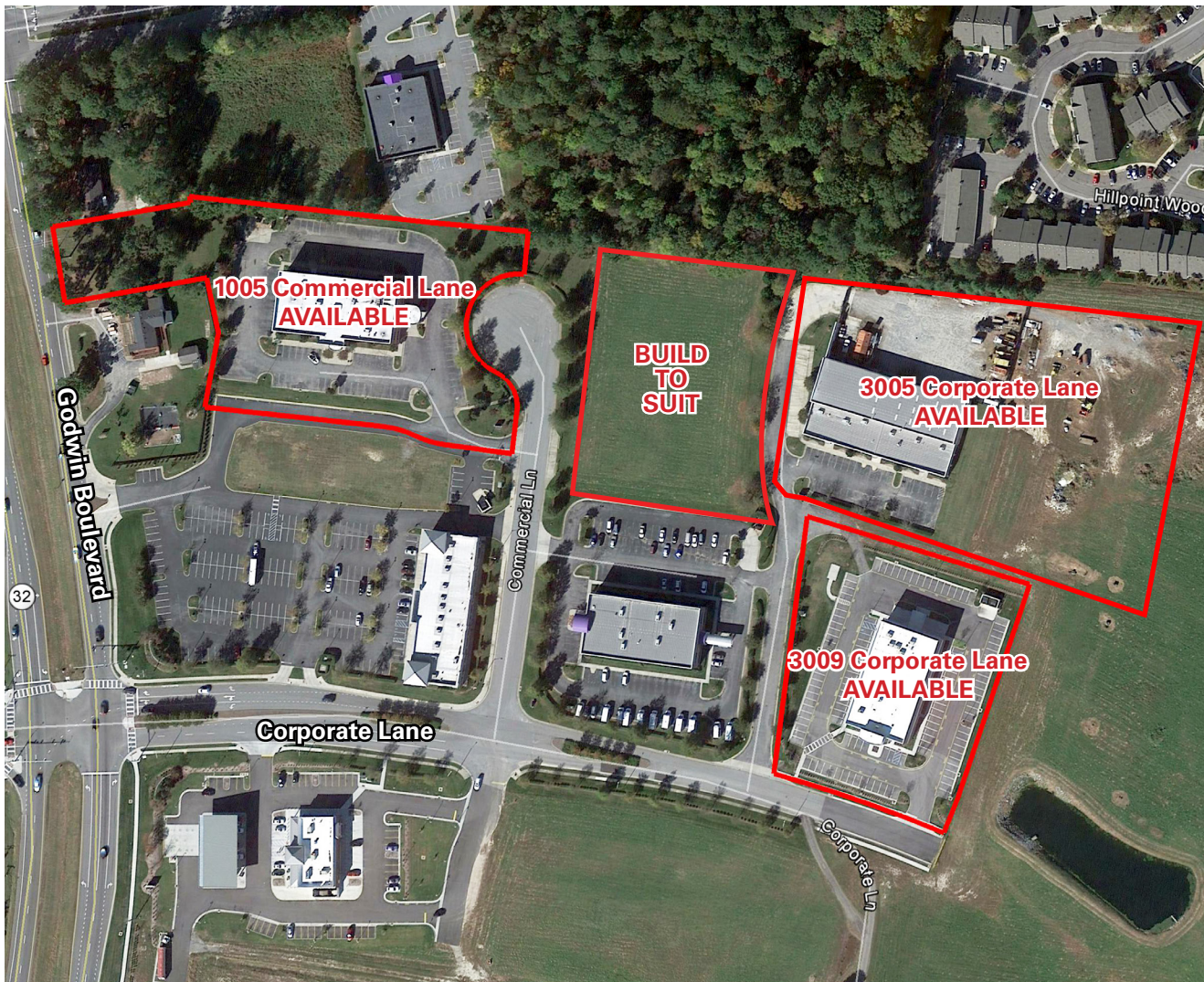
CONTACT:

PETER D. ABRAHAM, CCIM
(757) 640-8226
peterabraham@harveylindsay.com

MEDICAL & OFFICE SPACE FOR LEASE

GODWIN MEDICAL OFFICE PARK

SUFFOLK, VIRGINIA | 23434



GODWIN COMMERCE PARK

Located next to Sentara Obici Hospital as well as Route 58, 10 and I-460, offering convenient access to all of Hampton Roads.

The Godwin commerce park offers a variety of mixed-use spaces such as office, medical and retail.

The new Planter's Station subdivision, adjacent to the property consists of ± 200 single-family homes currently under construction.

DEMOGRAPHICS (2024)

	1 Mile	3 Miles	5 Miles
Population	7,672	23,350	47,369
Households	2,862	8,373	17,859
Avg. HHI	\$123,215	\$122,309	\$102,150
Employees	3,134	10,662	18,138
Businesses	210	689	1,331

HARVEY LINDSAY
COMMERCIAL REAL ESTATE

999 Waterside Drive • Suite 1400
Norfolk, Virginia 23510
757-640-8700
www.HarveyLindsay.com

CONTACT:

PETER D. ABRAHAM, CCIM
(757) 640-8226
peterabraham@harveylindsay.com

MEDICAL SPACE FOR LEASE

3009 CORPORATE LANE
SUFFOLK, VIRGINIA | 23434



MADISON BUILDING

- 24,864 SF, Two Story Medical Office Building
- 3 Suites Available For Lease
 - Suite 101: 2,528 SF
 - Suite 102: 1,837 SF
 - Suite 203: 1,089 SF
- Interior finishes by tenant or by developer, as desired by tenant
- Full service net of interior janitorial
- Elevator Access
- Medical Buildout
- Built in 2015
- Ample Parking
- Zoned O-I
- Adjacent to Sentara Obici, Wawa, Walgreen's and surrounding retail

HARVEY LINDSAY
COMMERCIAL REAL ESTATE

999 Waterside Drive • Suite 1400
Norfolk, Virginia 23510
757-640-8700
www.HarveyLindsay.com

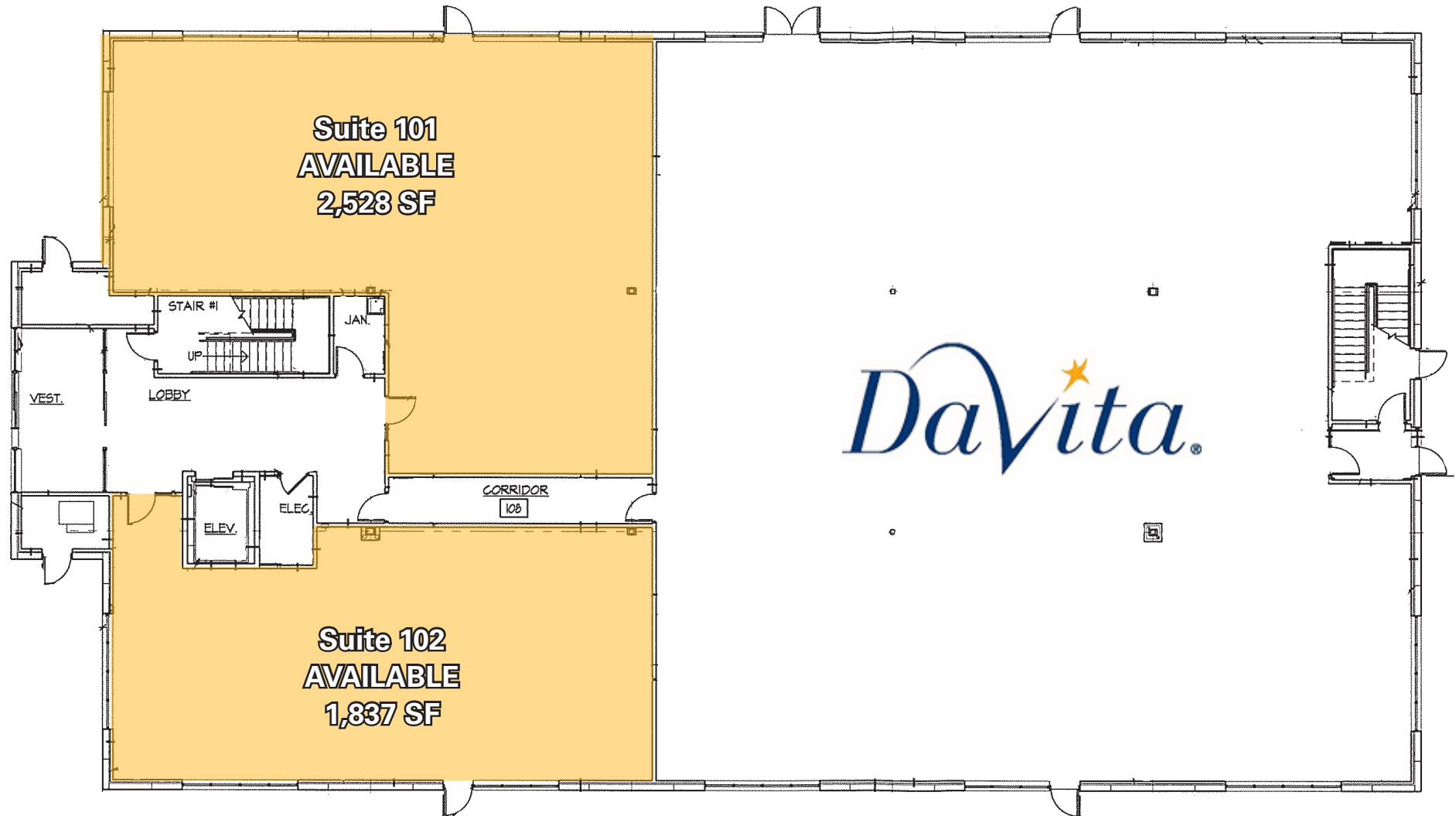
CONTACT:

PETER D. ABRAHAM, CCIM
(757) 640-8226
peterabraham@harveylindsay.com

MEDICAL SPACE FOR LEASE

3009 CORPORATE LANE
SUFFOLK, VIRGINIA | 23434

Madison Building



HARVEY LINDSAY
COMMERCIAL REAL ESTATE

999 Waterside Drive • Suite 1400
Norfolk, Virginia 23510
757-640-8700
www.HarveyLindsay.com

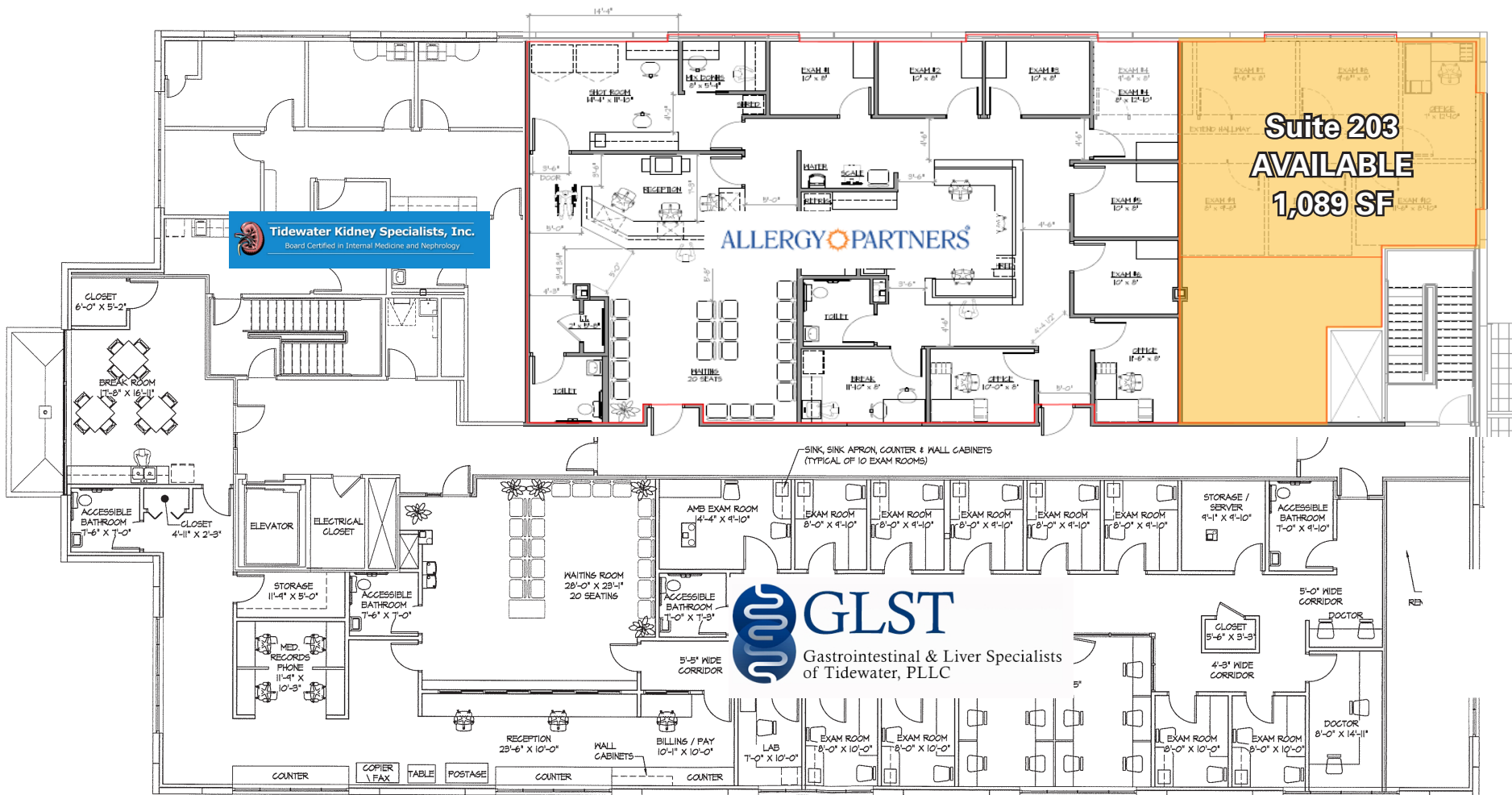
CONTACT:

PETER D. ABRAHAM, CCIM
(757) 640-8226
peterabraham@harveylindsay.com

MEDICAL SPACE FOR LEASE

3009 CORPORATE LANE
SUFFOLK, VIRGINIA | 23434

Second Floor Plan



HARVEY LINDSAY
COMMERCIAL REAL ESTATE

999 Waterside Drive • Suite 1400
Norfolk, Virginia 23510
757-640-8700
www.HarveyLindsay.com

CONTACT:

PETER D. ABRAHAM, CCIM
(757) 640-8226
peterabraham@harveylindsay.com

MEDICAL SPACE FOR LEASE

1005 COMMERCIAL LANE
SUFFOLK, VIRGINIA | 23434



GODWIN BUILDING

- 25,900 SF, Two Story Medical Office Building
- 1 Suite Available For Lease
 - +/-1,927 SF
- Interior finishes by tenant or by developer, as desired by tenant
- Full service net of interior janitorial
- Elevator Access
- Medical Buildout
- Built in 2015
- Ample Parking
- Zoned O-I
- Adjacent to Sentara Obici, Wawa, Walgreen's and surrounding retail

HARVEY LINDSAY
COMMERCIAL REAL ESTATE

999 Waterside Drive • Suite 1400
Norfolk, Virginia 23510
757-640-8700
www.HarveyLindsay.com

CONTACT:

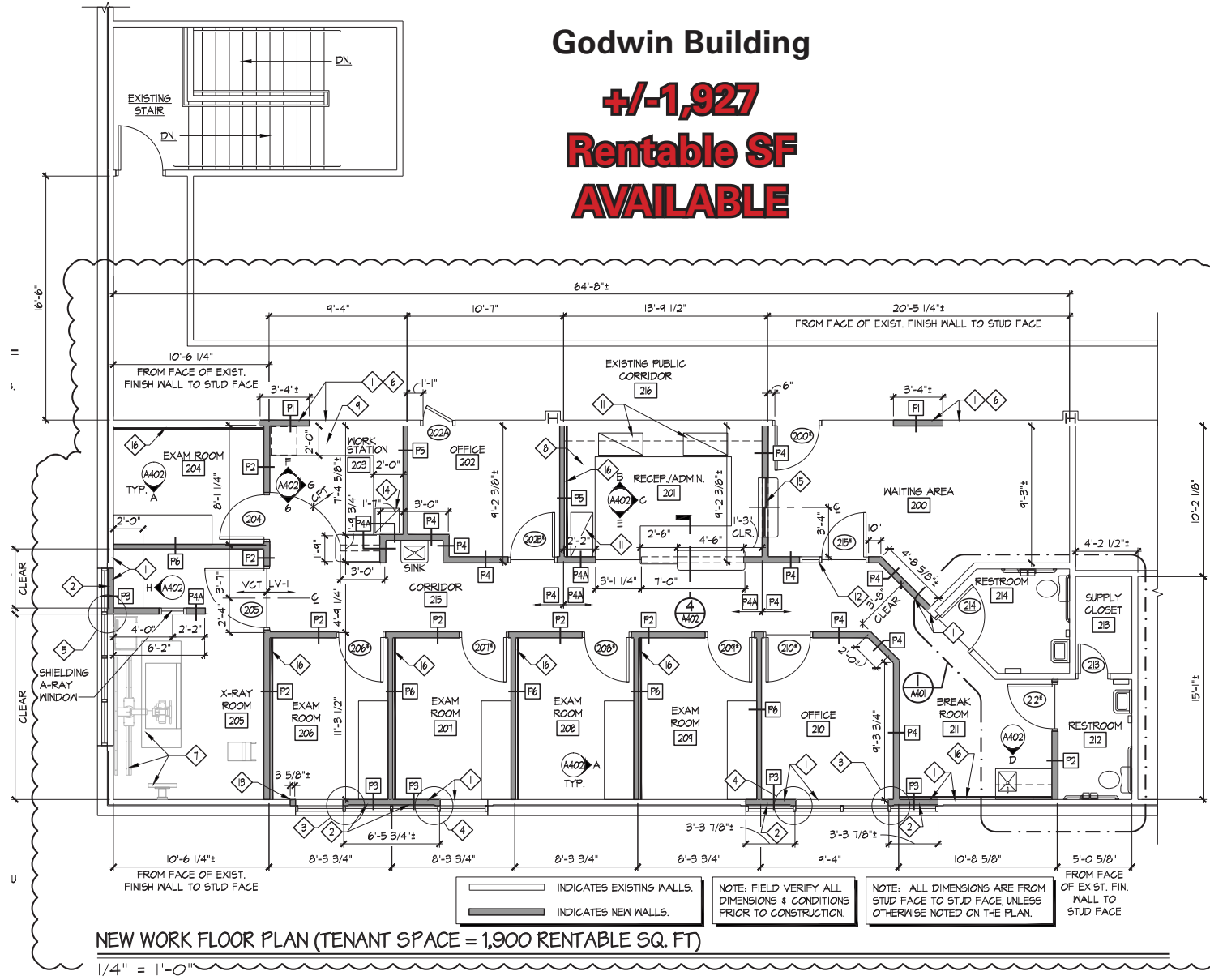
PETER D. ABRAHAM, CCIM
(757) 640-8226
peterabraham@harveylindsay.com

MEDICAL SPACE FOR LEASE

1005 COMMERCIAL LANE
SUFFOLK, VIRGINIA | 23434

Godwin Building

+/-1,927
Rentable SF
AVAILABLE



OFFICE SPACE FOR LEASE

3005 CORPORATE LANE
SUFFOLK, VIRGINIA | 23434



BRINKLEY BUILDING

- 21,000 SF, Single Story Medical Office Building
- 2 Suites Available For Lease
 - 1,932 SF
 - 1,625 SF
- Interior finishes by tenant or by developer, as desired by tenant
- Full service net of interior janitorial
- Medical Buildout
- Built in 2015
- Ample Parking
- Zoned O-I
- Adjacent to Sentara Obici, Wawa, Walgreen's and surrounding retail

HARVEY LINDSAY
COMMERCIAL REAL ESTATE

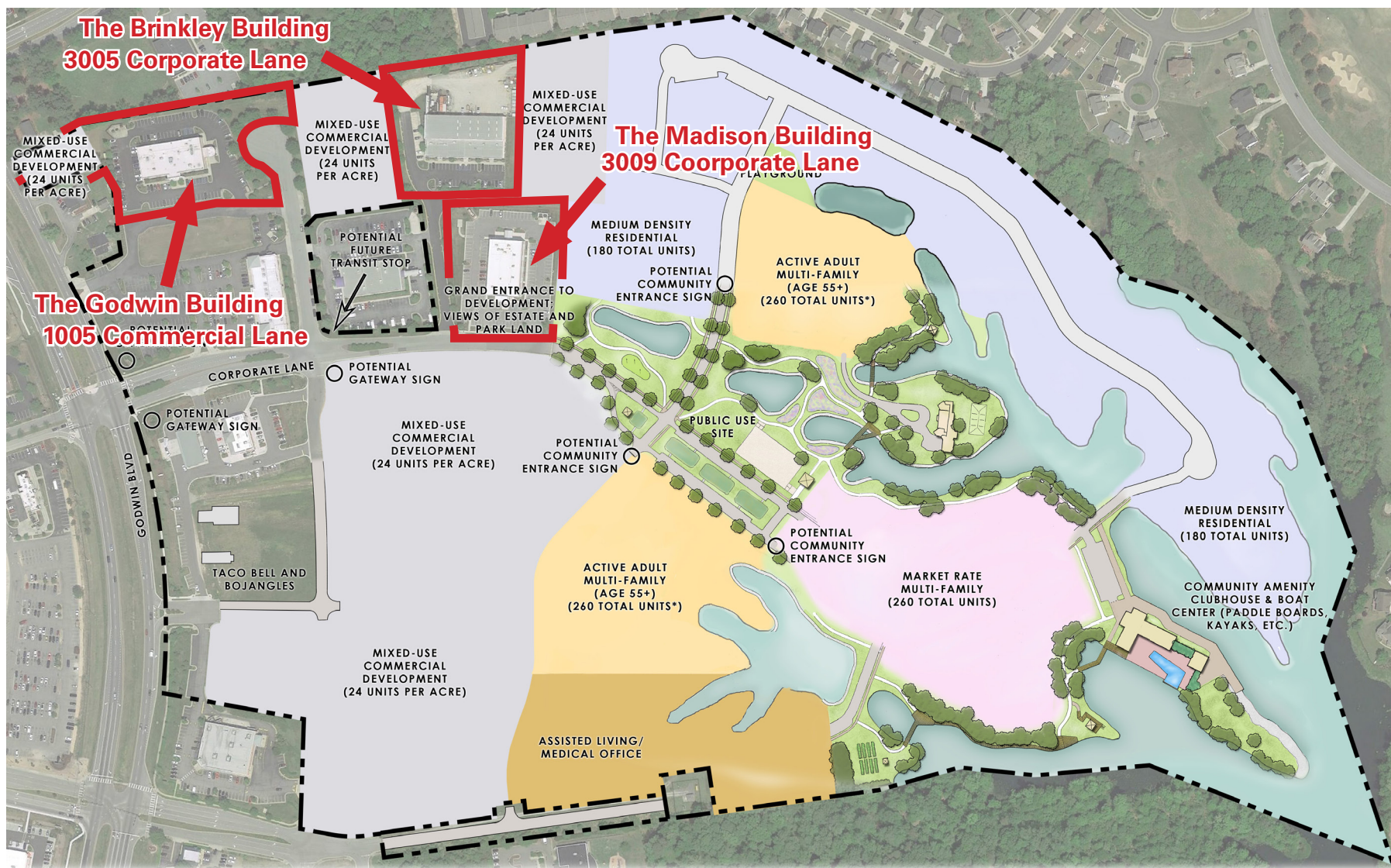
999 Waterside Drive • Suite 1400
Norfolk, Virginia 23510
757-640-8700
www.HarveyLindsay.com

CONTACT:

PETER D. ABRAHAM, CCIM
(757) 640-8226
peterabraham@harveylindsay.com

MEDICAL & OFFICE SPACE FOR LEASE

GODWIN MEDICAL OFFICE PARK SUFFOLK, VIRGINIA | 23434



LPDA CONCEPTUAL PLAN
LANDSCAPE ARCHITECTURE
LAND PLANNING
SUFFOLK, VIRGINIA

GODWIN PARK
OCTOBER, 2020

SCALE: 1" = 100' (24" x 36")
0' 100' 200'



HARVEY LINDSAY
COMMERCIAL REAL ESTATE

999 Waterside Drive • Suite 1400
Norfolk, Virginia 23510
757-640-8700
www.HarveyLindsay.com

CONTACT:

PETER D. ABRAHAM, CCIM
(757) 640-8226
peterabraham@harveylindsay.com