

FLORIN TOWNE CENTRE
5901 FLORIN RD
SACRAMENTO, CA
FOR LEASE 5,252 SF RESTAURANT SPACE

ETHAN CONRAD
PROPERTIES INC.

NOW REMODELED!

LEASES SIGNED!



Pivot Charging Co.



VIEW VIRTUAL TOUR

FOR MORE INFORMATION CONTACT:

Ethan Conrad
DRE: #01298662
ethan@ethanconradprop.com

916.779.1000

FEATURES:

- The Walmart located directly next to the subject property reportedly has the highest sales of any Walmart in the Greater Sacramento four county area and is the 95th percentile of all Walmart’s nationally!
- Located along a major thoroughfare with easy access to Hwy 99
- Dense population with over 189,660 residents within 3 miles
- Along busy Florin Rd, adjacent to Florin Town Center
- Approximately 500 parking spaces



PROPERTY DETAILS:

Former Sears Box at the Florin Towne Centre in Sacramento, CA. The property sits on approximately 10-acre parcel on Florin Road located right off Highway 99, providing exceptional visibility and access.

Leases for El Super Markets, Pollo Campero, Raising Cane’s, Aliados Restaurant, Quick Quack Carwash and Kids Empire have been signed!

EVGateway EV charging stations on-site.

LEASE RATE:

Second Floor-Restaurant
 Suite 200 5,252 SF \$0.75 PSF, NNN
 NNN costs are approximately \$0.18 PSF.

DEMOGRAPHICS:

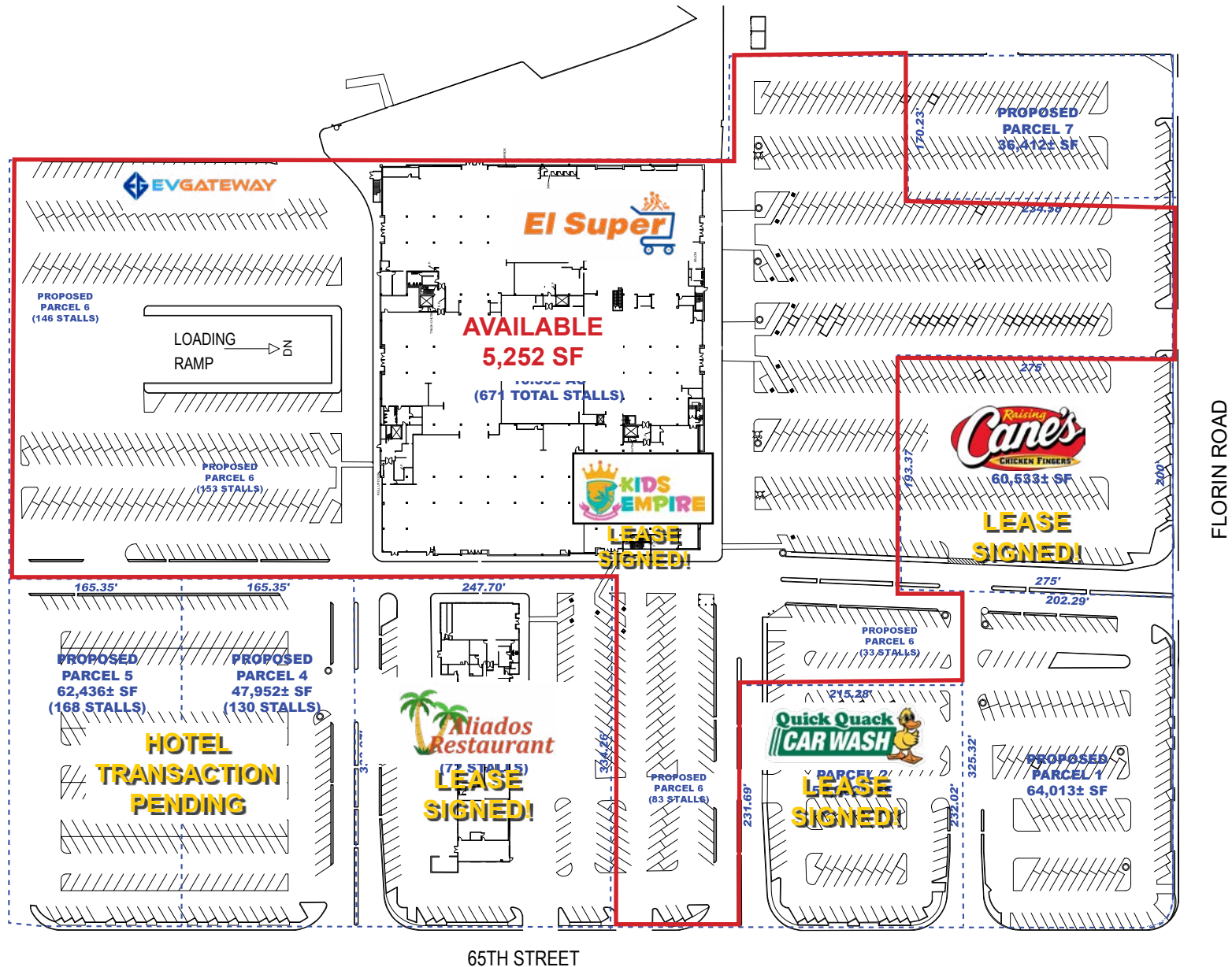
	1 Mile	3 Mile	5 Mile
2025 Total Population (est):	23,432	188,911	395,161
2025 Average HH Income:	\$81,311	\$91,099	\$112,499
Traffic Count @ Florin Rd:	35,527	65th Street:	15,127

ETHAN CONRAD PROPERTIES, INC.

1300 NATIONAL DRIVE, SUITE 100 | SACRAMENTO CA, 95834 | 916.779.1000
 www.ethanconradprop.com

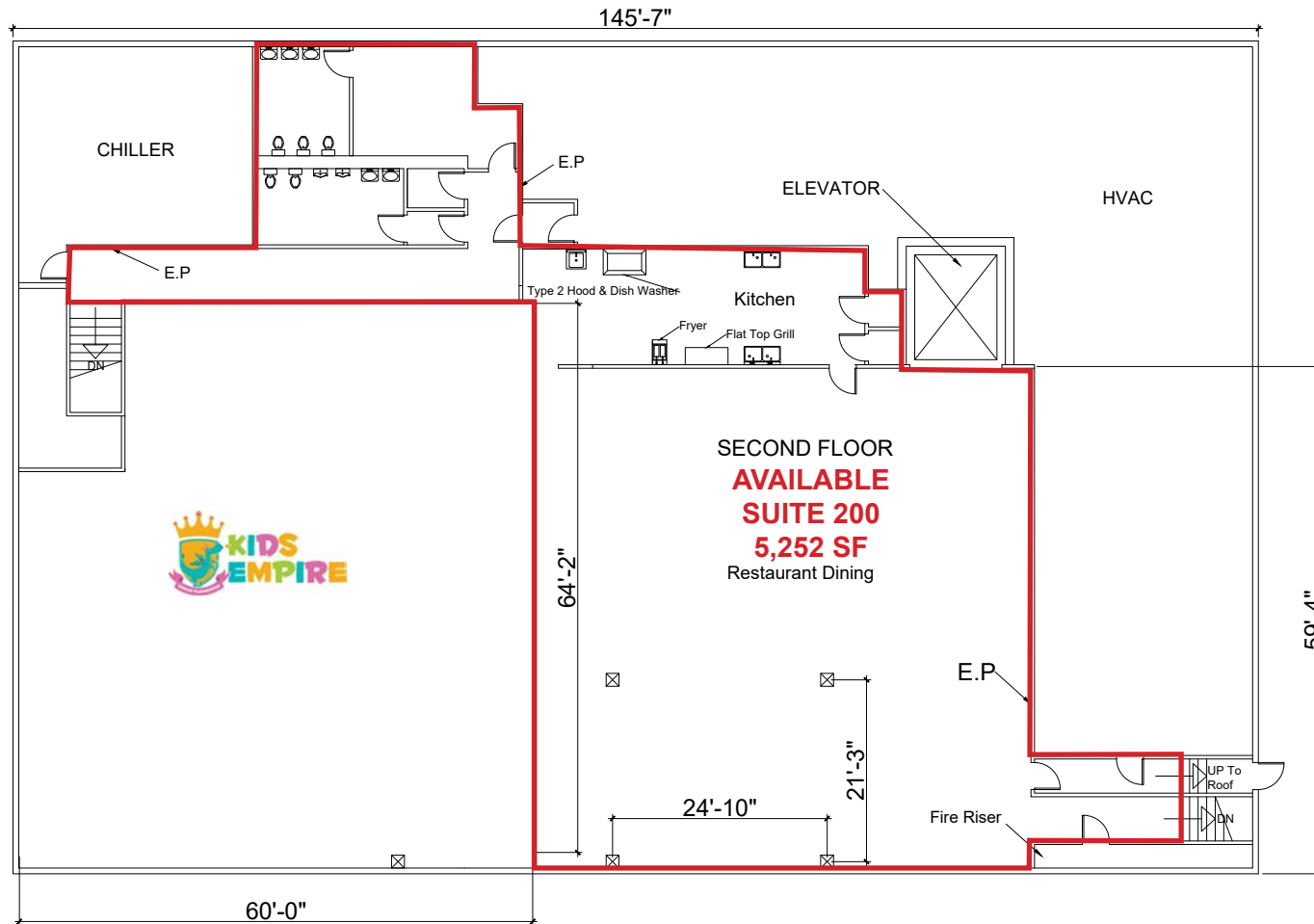
The information contained herein has been obtained from sources we believe to be reliable. However, we cannot guarantee, warrant or represent its accuracy and all information is subject to error, change or withdrawal. An interested party and their advisors should conduct an independent investigation of the property to determine to your satisfaction the suitability of the property for your needs.

SITE PLAN



The information contained herein has been obtained from sources we believe to be reliable. However, we cannot guarantee, warrant or represent its accuracy and all information is subject to error, change or withdrawal. An interested party and their advisors should conduct an independent investigation of the property to determine to your satisfaction the suitability of the property for your needs.

FLOOR PLAN
SECOND FLOOR/
RESTAURANT



Suite 200	SF	Lease Rate
Second Floor/Restaurant	5,252	\$0.75 PSF, NNN
NNN costs are approximately \$0.18 PSF.		

The information contained herein has been obtained from sources we believe to be reliable. However, we cannot guarantee, warrant or represent its accuracy and all information is subject to error, change or withdrawal. An interested party and their advisors should conduct an independent investigation of the property to determine to your satisfaction the suitability of the property for your needs.



ETHAN CONRAD PROPERTIES, INC.

1300 NATIONAL DRIVE, SUITE 100 | SACRAMENTO CA, 95834 | 916.779.1000

www.ethanconradprop.com

The information contained herein has been obtained from sources we believe to be reliable. However, we cannot guarantee, warrant or represent its accuracy and all information is subject to error, change or withdrawal. An interested party and their advisors should conduct an independent investigation of the property to determine to your satisfaction the suitability of the property for your needs.

FOR LEASE

FLORIN TOWNE CENTRE | RESTAURANT

5901 FLORIN RD
SACRAMENTO, CA



ETHAN CONRAD PROPERTIES, INC.

1300 NATIONAL DRIVE, SUITE 100 | SACRAMENTO CA, 95834 | 916.779.1000

www.ethanconradprop.com

The information contained herein has been obtained from sources we believe to be reliable. However, we cannot guarantee, warrant or represent its accuracy and all information is subject to error, change or withdrawal. An interested party and their advisors should conduct an independent investigation of the property to determine to your satisfaction the suitability of the property for your needs.