

PATCH



# Your new neighbourhood workspace

Opening this  
October at Bobby's



# Welcome to Patch

We're creating a new hub for the South Coast's entrepreneurs, creatives and community builders.

Located on the first floor of the iconic Bobby's building, we will be home to a suite of beautifully designed spaces for everyone to enjoy, from offices and coworking to podcast studios and wellness rooms.

[Website](#)

[Register interest](#)

**PATCH**

Bournemouth



# A place to work, discover and meet



## WORK

From coworking to private offices, our workspaces have been carefully crafted to support a fantastic workday experience.



## DISCOVER

Our meeting and event spaces are designed to foster connection, encourage the exchange of ideas, and celebrate the South Coast's creative character.



## MEET

We're a new home for Bournemouth's creative and entrepreneurial communities to work and collaborate in the heart of town.

**PATCH**

Bournemouth

[Register interest](#)

# Reimagining a local landmark



We're breathing new life into the first floor of Bobby's.

This project is part of a long-term vision to revitalise the historic department store and transform Bobby's into a South Coast destination centred around beauty, health, food, drink, art, culture, and community.

Neighbours will include leading South Coast startups and design studios, as well as Franco Manca pizzeria on the ground floor and The Botanist restaurant and bar on the rooftop.

Together, let's reinvigorate the town centre!

#### Address

First Floor, Bobby's Building, The Square, 2-12  
Commercial Road, Bournemouth BH2 5LP

[Find us on Google Maps](#)

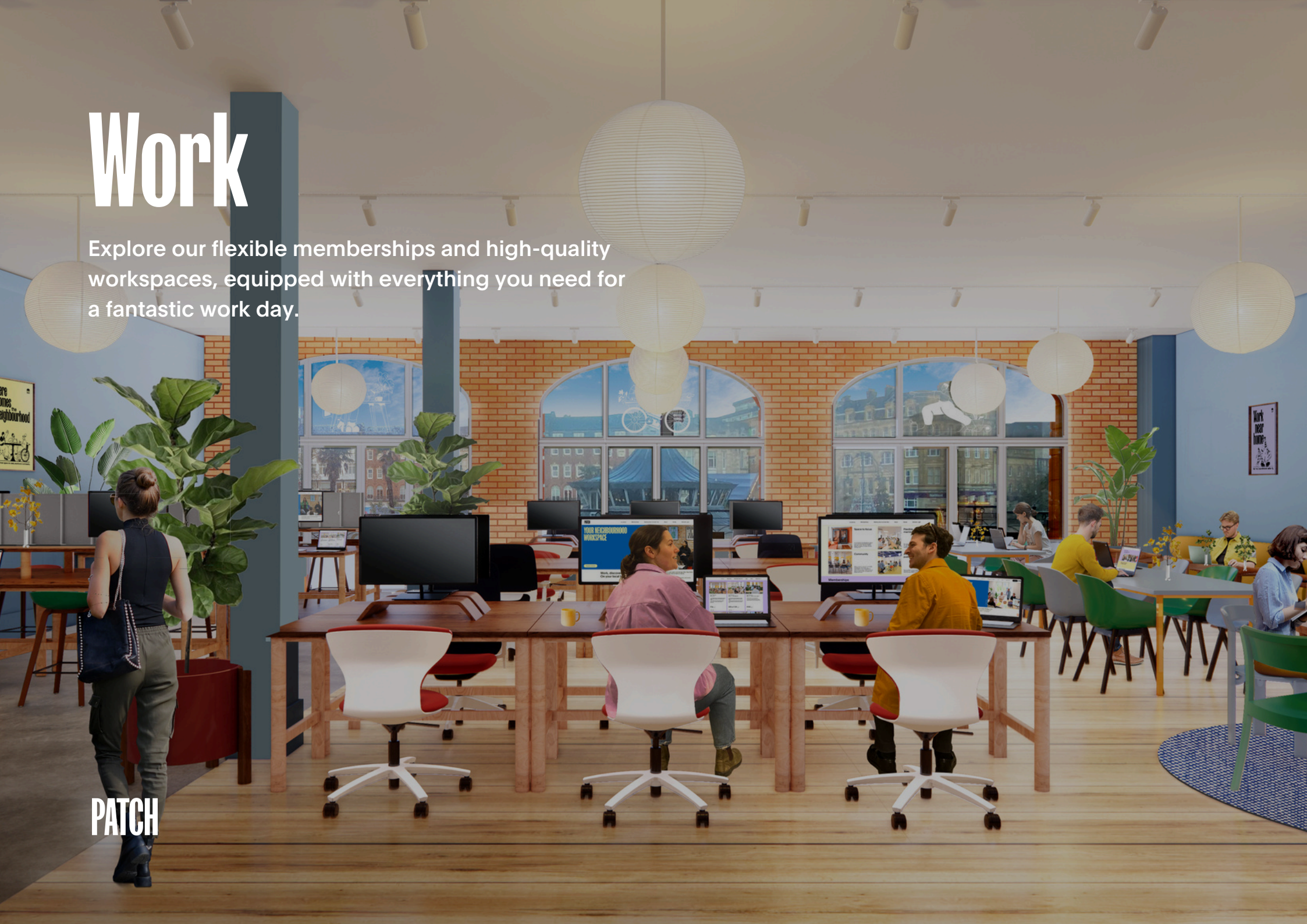
**PATCH**

Bournemouth

# Work

Explore our flexible memberships and high-quality workspaces, equipped with everything you need for a fantastic work day.

**PATCH**



# Workspace and memberships

Designed for all  
working rhythms

## Drop In

One-day-a-month coworking access.  
From £24+VAT a month.

## Associate

4, 8 or unlimited-days-a-month  
coworking access.  
From £89+VAT a month.

## Resident

Your own dedicated desk, ergonomic  
chair and lockable pedestal.  
From £319+VAT per month.

## Private Office

A fully-serviced home for your  
business with capacity for teams of  
up to 20.  
POA

## Virtual Office

A registered business address in  
the heart of Bournemouth.  
From £30+VAT per month.

Register your interest

**PATCH**

Bournemouth

## Included in all memberships

Top-speed, secure wifi · Focus booths for private calls · 7-day a week access ·  
Meeting room credits · Lounges and breakout spaces · Complimentary bean-to-  
cup coffee · Regular member events · Cycle parking · Onsite showers · Dog friendly

# Drop-in Membership

## One-day-a-month access to our coworking studio

Our most flexible membership which can be used by the day or the hour. A great option for anyone in need of an occasional change of scene and seeking to feel part of a wider professional community.

£24+VAT per month.

[Register your interest](#)

**PATCH**

Bournemouth



# Associate Membership

Four, eight or unlimited-days-per-month access to our coworking studio

Our three Associate memberships are designed for anyone looking for a more regular or full-time alternative to the kitchen table or company office, but without the need for a permanent desk.

Associate 4: £89+VAT per month

Associate 8: £139+VAT per month

Associate Unlimited: £209+VAT per month

[Register your interest](#)

**PATCH**

Bournemouth



# Resident Membership

## A permanent desk to call your own

This is a brilliant option for solopreneurs and remote workers looking for a regular work base to personalise with your ideal setup.

Our Resident area is set up with generous desks, acoustic screens, ergonomic chairs, and lockable pedestals. It comes with its own lounge and phone booths in addition to other shared amenities and spaces.

£319+VAT per month.

[Register your interest](#)

**PATCH**

Bournemouth



# Office Membership

A private workspace for building your business alongside your team

Designed for SMEs and startups, our offices are fully-serviced and ready to move in.

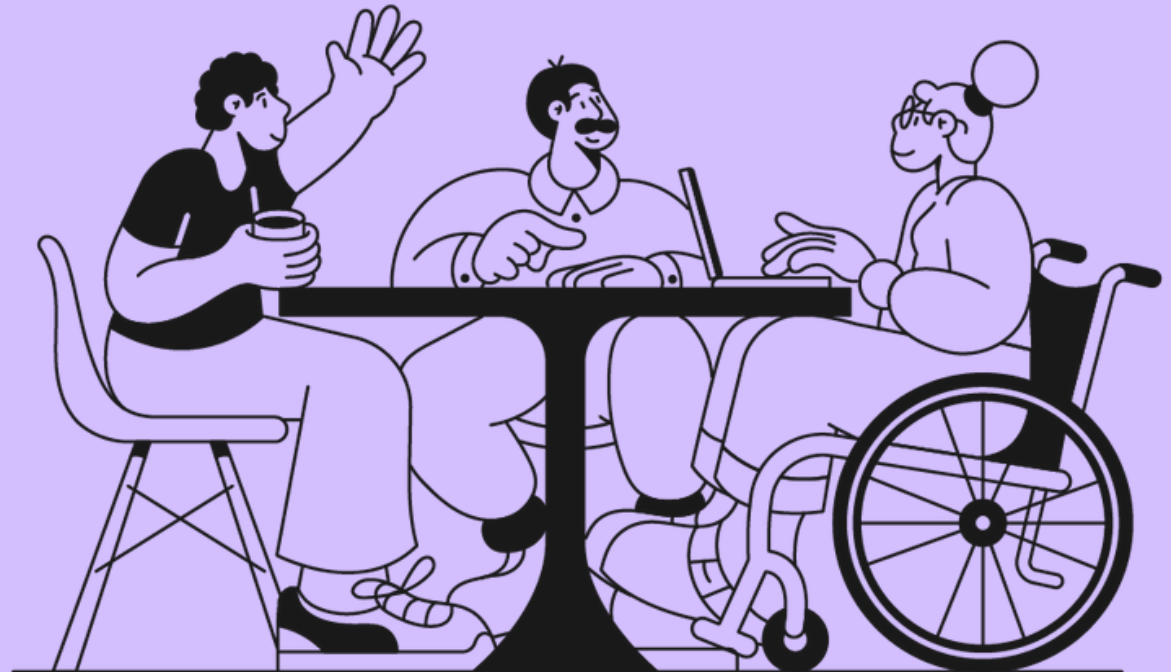
Our leases start from just 6 months and include all maintenance and set-up costs in one monthly payment. They also include a meeting credit system and use of our generous shared amenities.

POA.

[Register your interest](#)

**PATCH**

Bournemouth



# Designed for all working rhythms

Compare our memberships.

Prices are per month and  
exclude VAT.

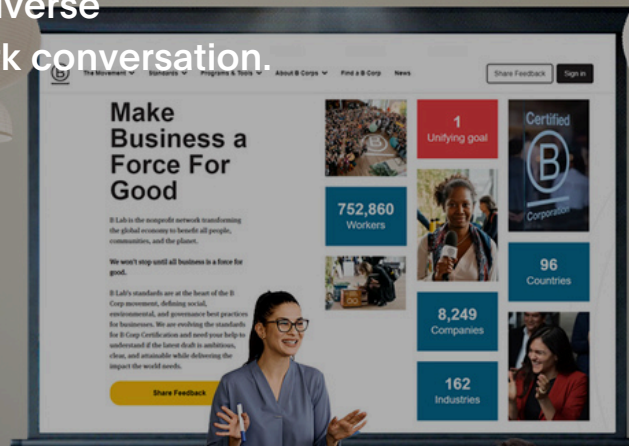
	Drop In	Associate 4	Associate 8	Associate Unlimited	Resident	Private Office	Virtual Office
Price per month	£24	£89	£139	£209	£319	POA	£30
Top-speed wifi	✓	✓	✓	✓	✓	✓	
Free printing	✓	✓	✓	✓	✓	✓	
Free access to phone booths	✓	✓	✓	✓	✓	✓	
Discounted event space hire rates	✓	✓	✓	✓	✓	✓	
Access to member events	✓	✓	✓	✓	✓	✓	
Unlimited freshly brewed tea and coffee	✓	✓	✓	✓	✓	✓	
Member discounts	✓	✓	✓	✓	✓	✓	
Purchasable guest passes	✓	✓	✓	✓	✓	✓	
Ergonomic chair	✓	✓	✓	✓	✓	✓	
Access to bookable second screens	✓	✓	✓	✓	✓	✓	
Meeting room credits		✓	✓	✓	✓	✓	
7-day access		✓	✓	✓	✓	✓	
Fixed space to customise to your preferences					✓	✓	
Company name on bespoke door sign						✓	
Secure storage	+£24	+£24	+£24	+£24	✓	✓	
Registered business address and incoming mail handling	+£24	+£24	+£24	+£24	✓	✓	✓

**PATCH**

Bournemouth

# Discover

Our design-led event spaces will provide a new town centre destination to bring together diverse perspectives, drive creativity and spark conversation.



PATCH

# Meeting rooms and event spaces

Our flexible spaces  
will host events for  
the whole community  
to enjoy

[Register your interest](#)

**PATCH**

Bournemouth

## Meeting Rooms

Our contemporary, colorful meeting rooms seat 4 to 12 people and are equipped with HD TVs, video conferencing, and whiteboards, ideal for workshops, board meetings, and roundtables. From £30/hour.

## Academy

Our light-filled, flexible studio seats 18 at tables or 30 auditorium-style. It's perfect for board meetings, workshops, talks, and yoga, and comes with a projector, screen, speakers, and whiteboard. From £35/hour.

## Podcast Studio

Our plug-and-play podcast studio hosts up to 4 and includes a digital mixer, microphones, headphones, 4K USB camera, camera tripod, and connection cables. From £30/hour.

## Wellness Room

Our boutique wellness studio is designed for well-being and beauty activities, including coaching sessions, beauty therapy, and massage. It features a sink, movable tables and chairs. From £20/hour.

## Patch Market

Overlooking Bournemouth Square, our cafe and bar space is perfect for networking events, talks, and product launches. It seats 42 in presentation setup or 50+ auditorium-style and includes a dry-hire bar, projector, and screen. From £35/hour.

# Events Programme

Patch will offer a curated events programme that shines a light on local life and celebrates all that makes Bournemouth special and distinctive.

If you have an idea for an event, we'd love to hear from you. We're already taking enquiries for October events.

[Register your interest](#)

**PATCH**

Bournemouth



# Meet

Patch is the new home for entrepreneurs, creatives and community builders to come together to work, connect and collaborate, right in the centre of Bournemouth.

**PATCH**



# Your Work Near Home community

Join a dynamic local community choosing to work, discover and meet close to home.

We call this the 'Work Near Home' era, and it's based on our belief that spending more time in our local community is key to creating happier societies, healthier high streets, and greater opportunity for all.

Whether you're seeking a fantastic workday, community connection, or new ideas, we believe Patch is the place to do it.

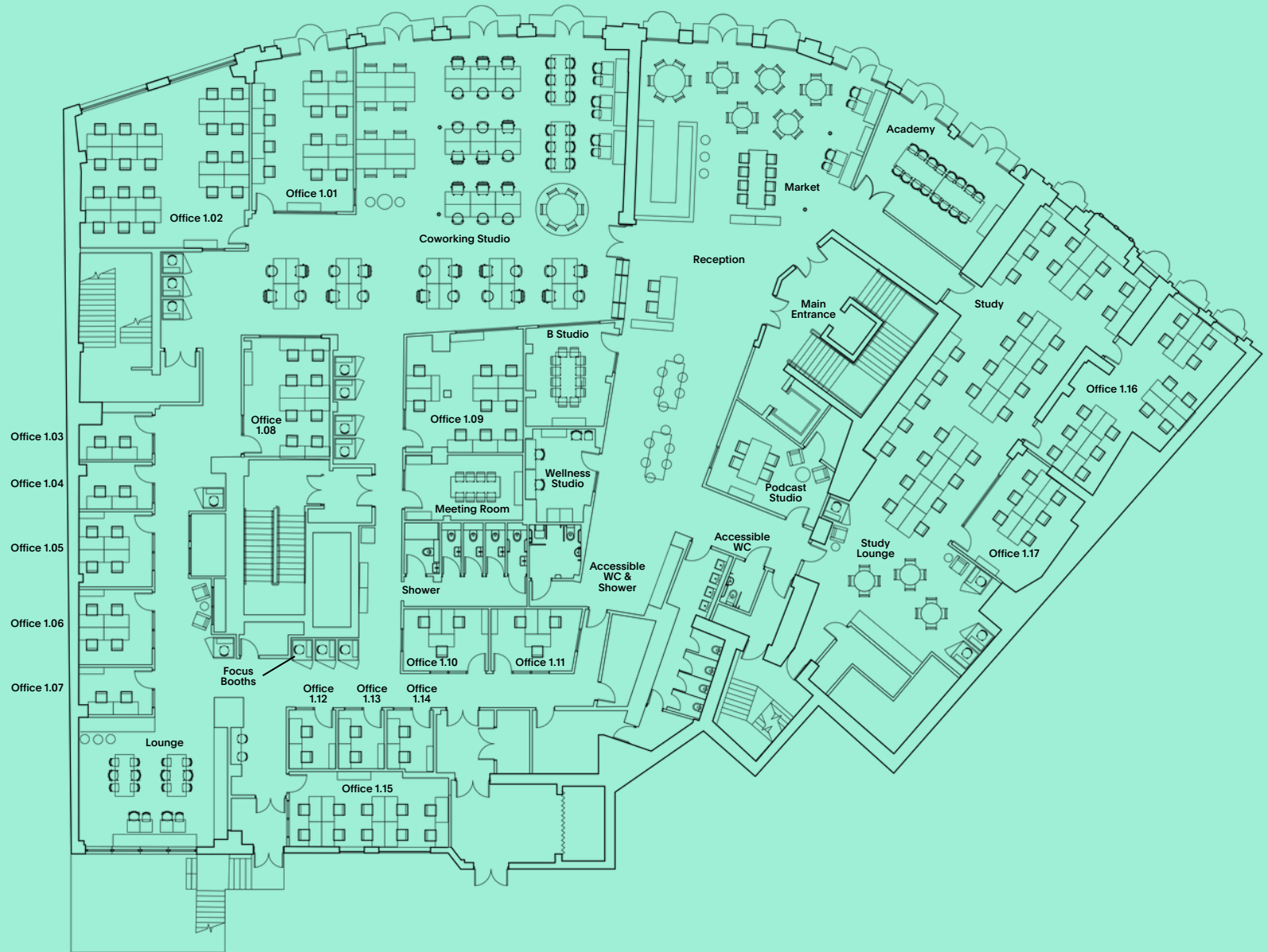
**PATCH**

Bournemouth



# Floor Plan

Located on the first floor of Bobby's





BOBBY'S

# Register below to be the first to hear about our founding member offers



Register interest

Visit the website

Contact the team

Patch, Bobby's Building, The Square, 2-12  
Commercial Road, Bournemouth BH2 5LP

