

Full Floor Sublease – 27,755 ± RSF

960 Harvest Drive, Union Meeting 3A, Blue Bell, PA

960 Harvest Drive (Union Meeting 3A) Sublease

BUILDING OVERVIEW

Union Meeting Three offers a highly desirable corporate environment, combining striking, glass-intensive architecture with efficient, highly functional floor plans in one of the most sought-after suburban office submarkets in the Philadelphia region.

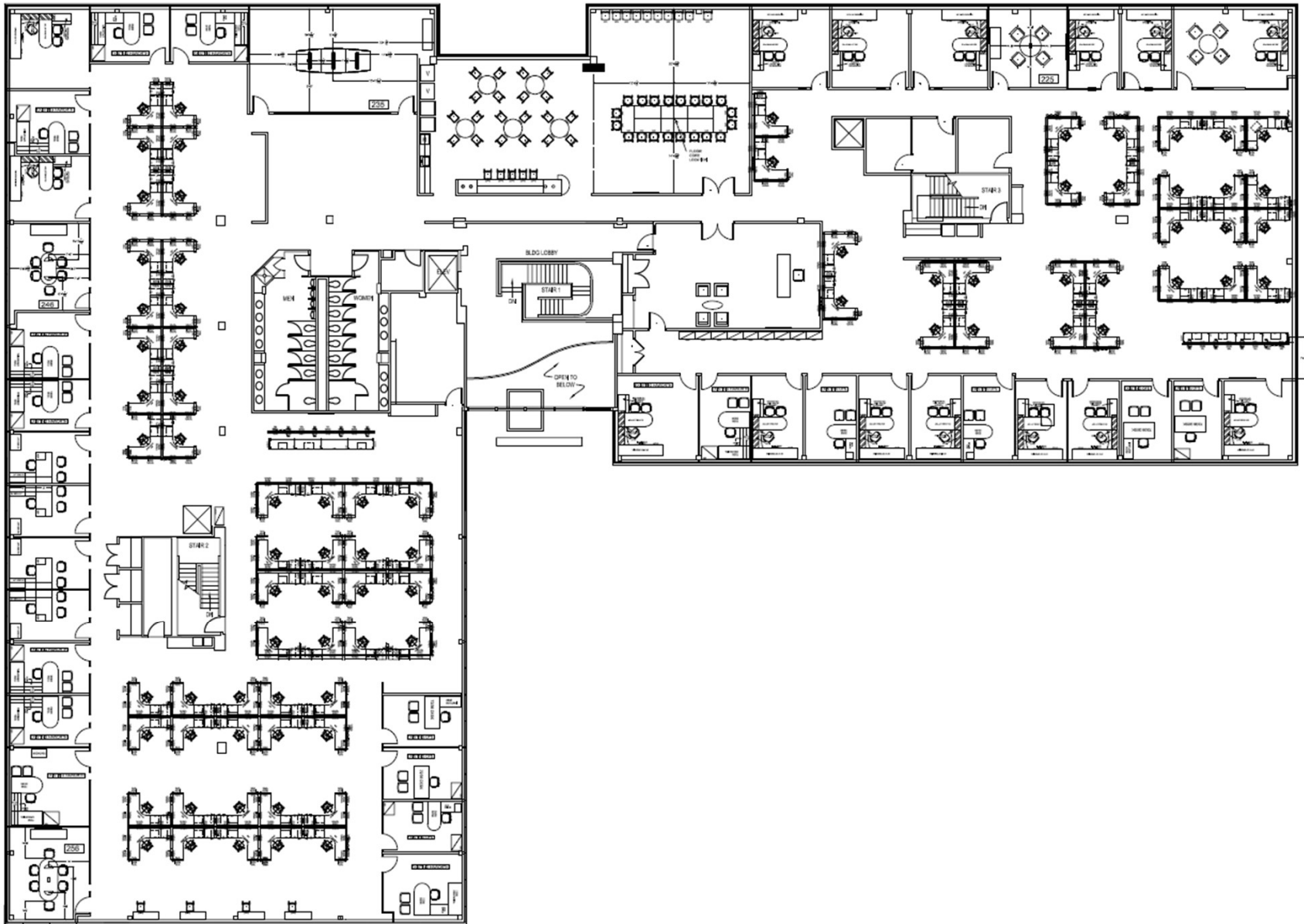
The three-building campus is strategically located in the heart of Montgomery County. Union Meeting Three sits just minutes from the intersection of the Pennsylvania Turnpike, the Northeast Extension, and I-476 in Plymouth Meeting. Its Blue Bell location also provides convenient access to quality housing, a deep and skilled labor pool, as well as a strong mix of nearby restaurants, hotels, and retail amenities.

SUBLEASE HIGHLIGHTS

- Full floor sublease opportunity 27,755 ± RSF
- Immediate Availability
- Sublease term through 5/31/2030
- Asking rental rate of \$19.50/SF + Electric
- Furniture Negotiable
- Abundant parking (4/1,000 RSF)
- Fitness center located in Building 3B. Numerous amenities within a short drive
- Minutes from I-76, I-476 and PA Turnpike (I-276); SEPTA bus station nearby with service to regional transportation centers.



960 Harvest Drive (Union Meeting 3A) – Floor plan



960 Harvest Drive (Union Meeting 3A) - Photos



FOR MORE INFORMATION
PLEASE CONTACT:

BRIAN LAFOND
Principal
215-519-3077
blafond@gola.com

DREW BUTERA
Tenant Representative
267-500-7820
drew@gola.com

GOLA CORPORATE REAL ESTATE, INC.

2490 Boulevard Of The Generals
Suite 100
Norristown, PA 19403
610-631-0333

www.gola.com

