

Commonwealth Management, Inc Real Estate

(California Brokers Lic 0821583)



FOR LEASE or SALE FORMER BANK BRANCH ON MAJOR SOUTH SACRAMENTO THOROUGHFARE

LOCATION: 5618 Freeport Blvd, off Fruitridge Rd

Close to new Raley's Supercenter, numerous other banks.
Adjacent to Marie Callender's Restaurant, Burger King,
Schools Credit Union

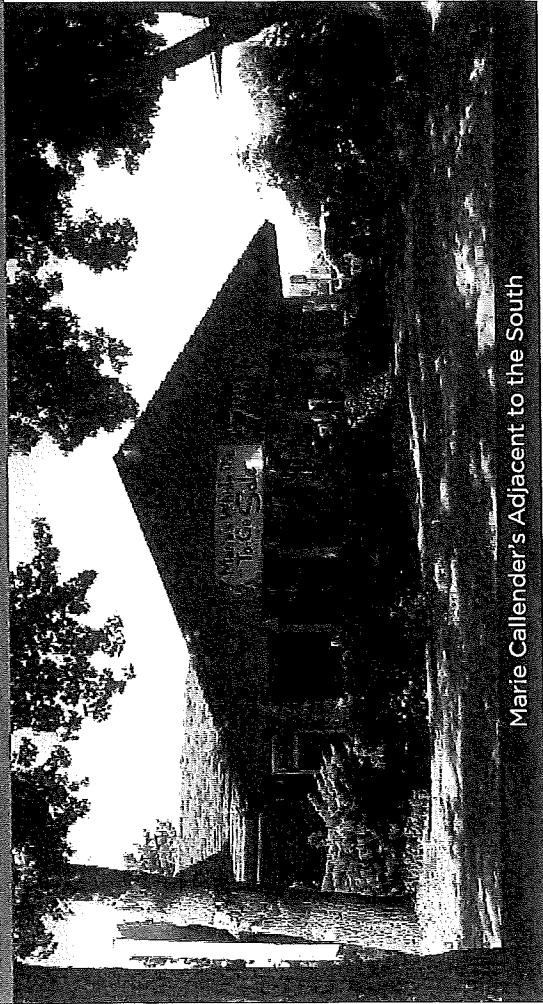
DESCRIPTION: 3596 sq.ft. masonry 1 story building with high ceilings & mezzanine.
Built in 1976 with drive through and 19 parking spaces on 1/2 acre lot.

PRICE: *Short term, temporary pop-up use will be considered
offers welcome!*

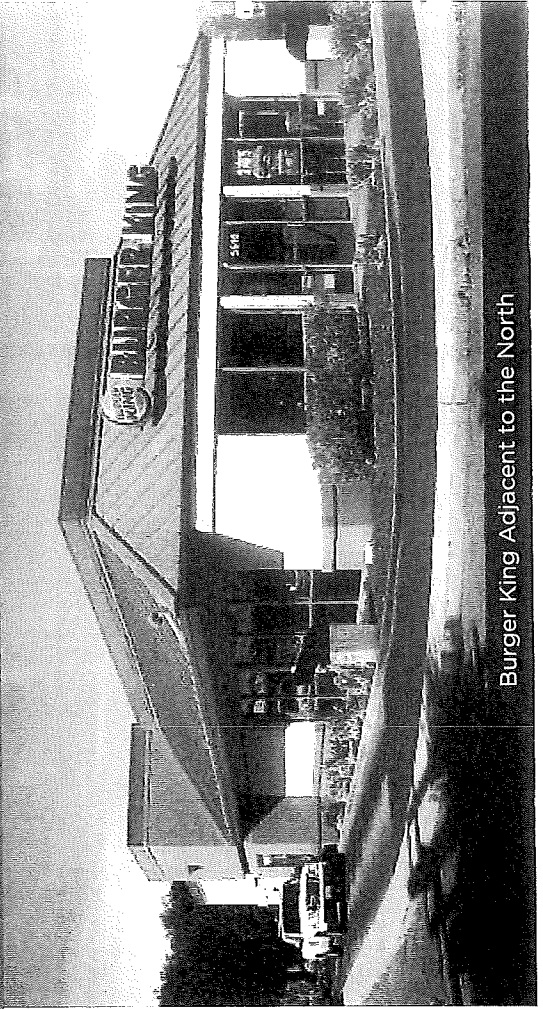
FOR FURTHER INFORMATION, CONTACT:

TED W. DANG owner/agent (510)832-2628 X 222 twd113@aol.com
BROKER CO-OP WELCOME

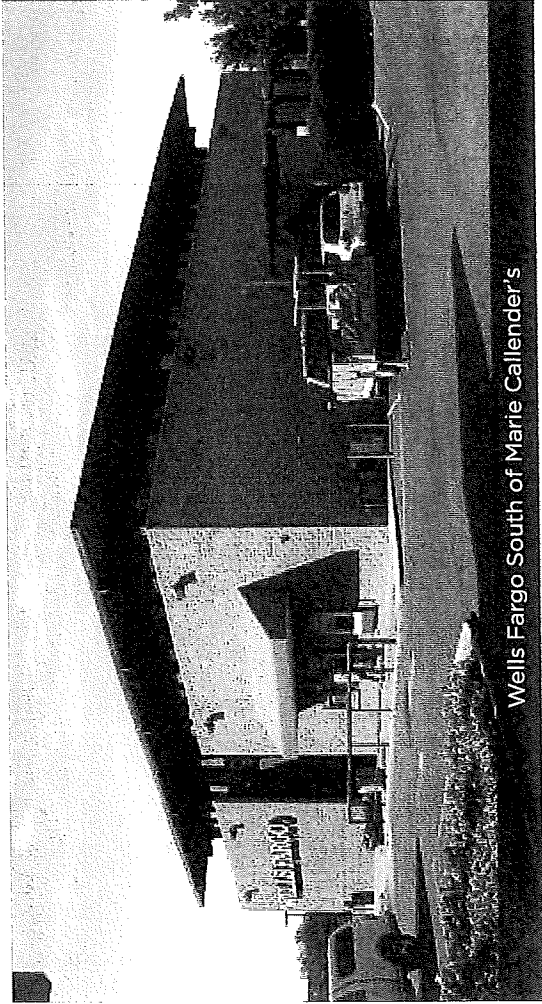
VICINITY PHOTOS



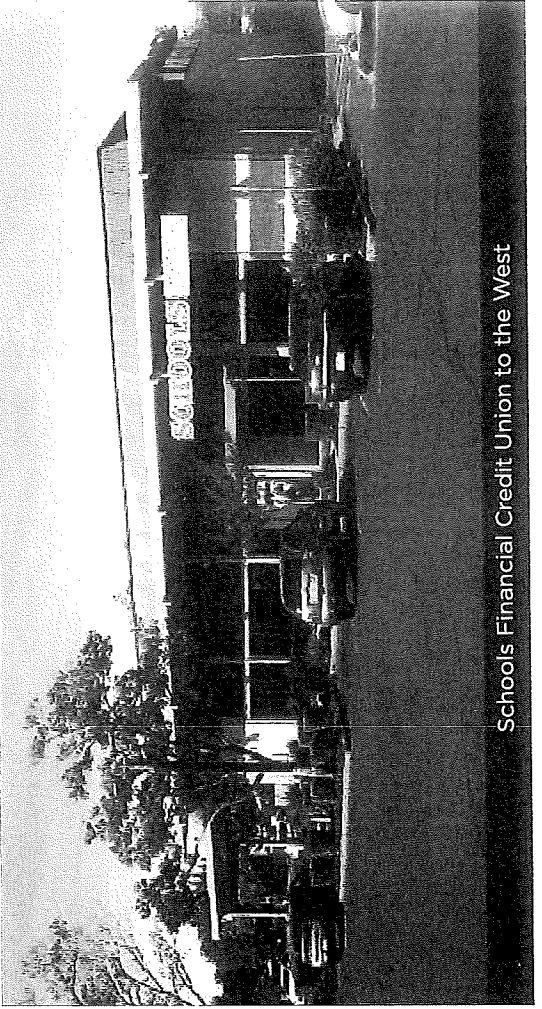
Marie Callender's Adjacent to the South



Burger King Adjacent to the North

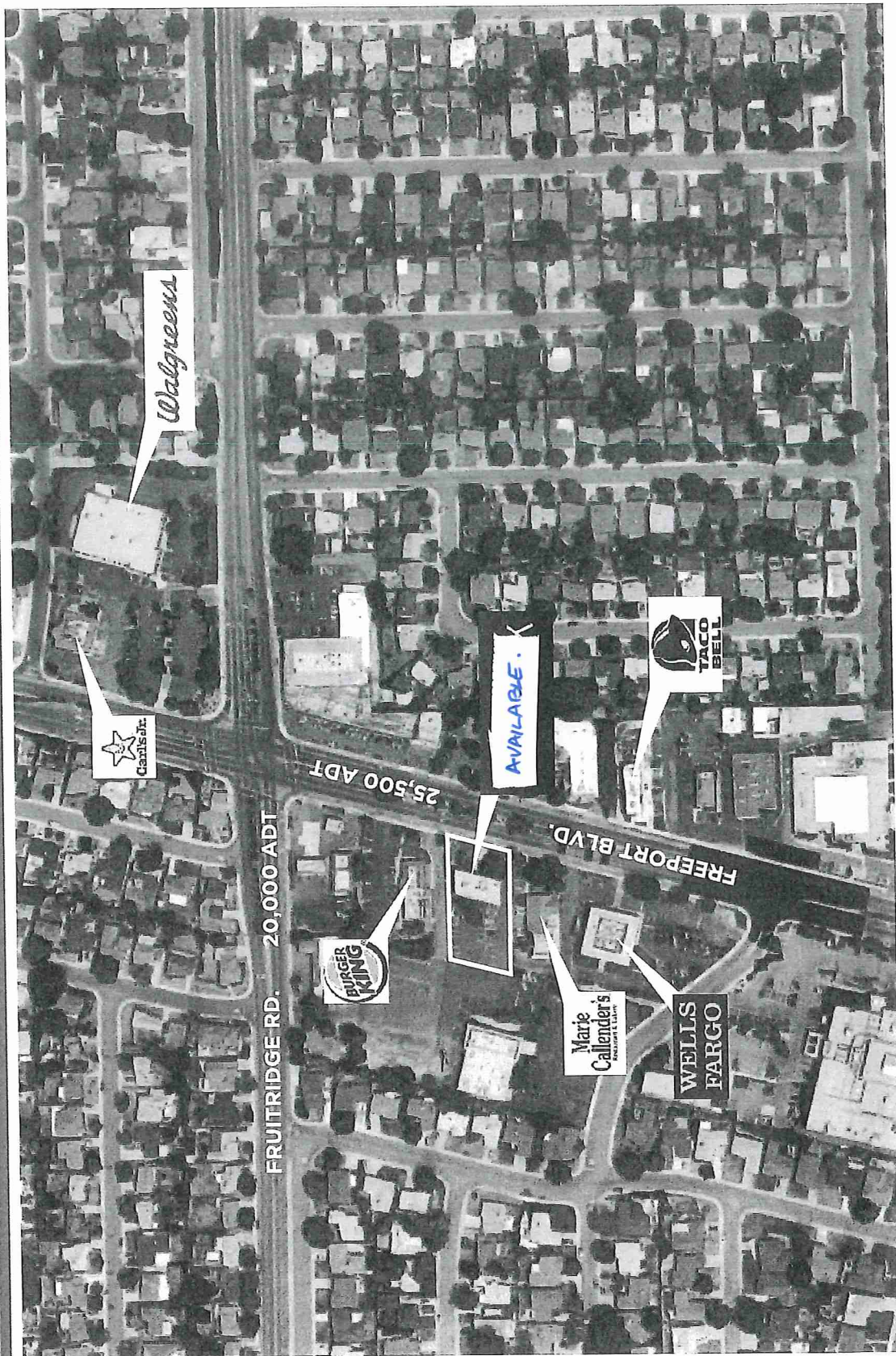


Wells Fargo South of Marie Callender's



Schools Financial Credit Union to the West

LOCATION AERIAL



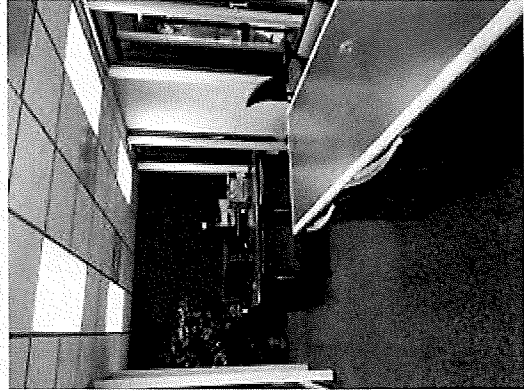
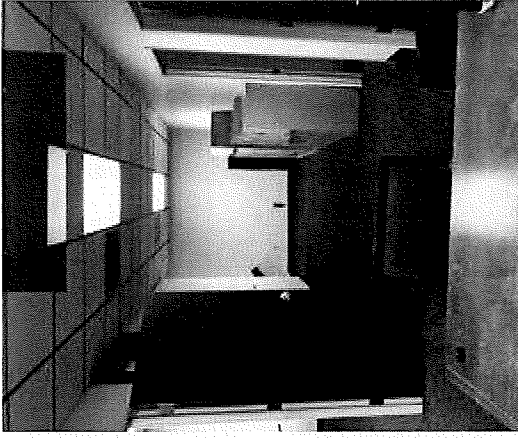
NOW SUBLEASING | ±3,596 SQ. FT

FREESTANDING BUILDING

5618 FREEPORT BOULEVARD, SACRAMENTO, CA 95822



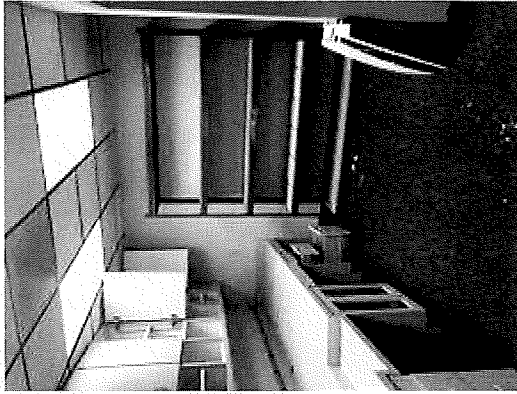
SECOND FLOOR



MEZZANINE OFFICE



MEZZANINE OFFICE



MEZZANINE
SUPPLY ROOM

