

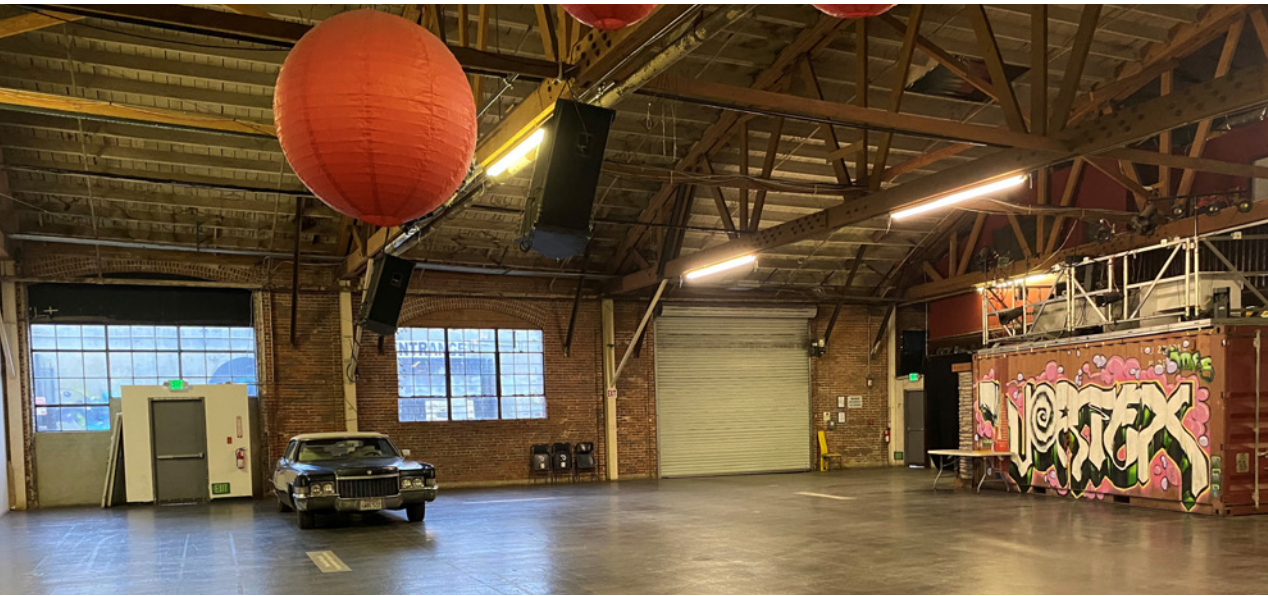
FOR LEASE

# 2341 E OLYMPIC BLVD

*8,121 SF Creative Industrial Space for Lease*

LOS ANGELES, CA 90021





*Great for Showroom, Events,  
Gallery, and Light Industrial Uses*

LEASE RATE	TBD - call broker
LEASE TERM	3 years or submit
PARKING	50 cars - call broker
RESTROOM	Features a large bathroom bank with private stalls
LOADING	Oversized GL loading door
CLEARANCE	16'-28'
TYPE	Brick building with wood truss ceilings

*8,121 SF*

AVAILABLE

*TBD*

LEASE RATE - CALL BROKER



SHOWROOM,  
EVENTS,  
GALLERY & LIGHT  
INDUSTRIAL USES



6,274 SF CLEAR  
SPAN AREA



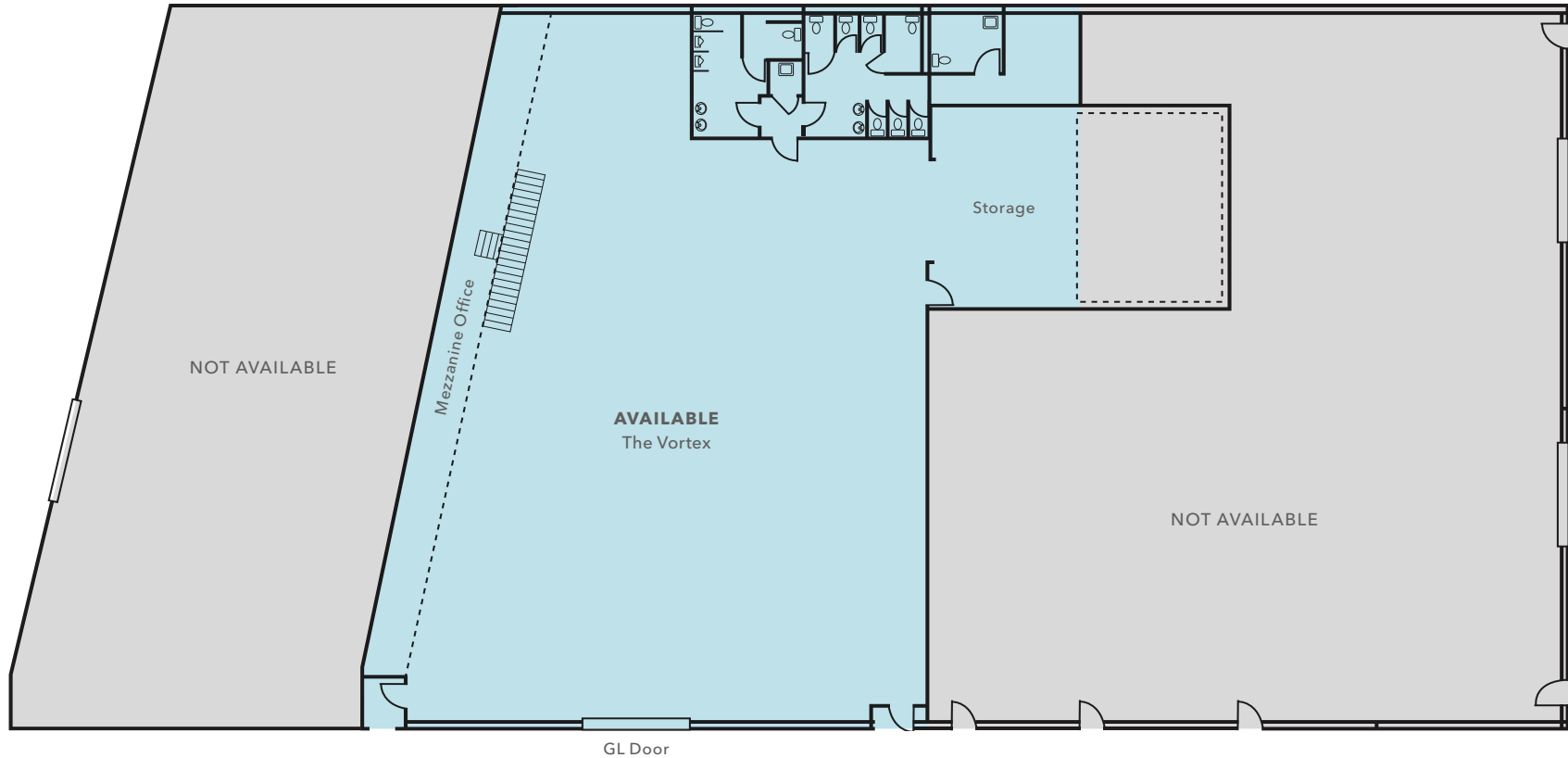
PARKING FOR UP  
TO 50 CARS (CALL  
BROKER)



APPROVED  
FOR UP TO 400  
PERSON CAP.  
GATHERINGS



# FLOOR PLAN



*8,121 SF*

AVAILABLE

*TBD*

LEASE RATE - CALL BROKER



# OUTSTANDING CREATIVE INDUSTRIAL SPACE

8,121 SF total space includes 6,274 SF clear span area, mezzanine offices, storage area, and bathroom bank

Over-sized loading door and semi-private alley access

Great for wholesale/retail showrooms or creative industrial uses

400 person capacity for events, meetings or gatherings

Power is 200 amps at 240 volts and 3 phase

Equipped with fire sprinklers

**10 MIN**

TO DTLA

**5 MIN**

TO ARTS DISTRICT



2341 E  
OLYMPIC  
BLVD

*Exclusively leased by*

**TOM WILLIAMS**  
213.225.7229  
tom.williams@kidder.com  
LIC N° 01270201

**NICK ARNST**  
213.225.7226  
nick.arnst@kidder.com  
LIC N° 01927768

**LINDSAY PARK**  
213.225.7234  
lindsay.park@kidder.com  
LIC N° 02178941

**KIDDER.COM**

This information supplied herein is from sources we deem reliable. It is provided without any representation, warranty, or guarantee, expressed or implied as to its accuracy. Prospective Buyer or Tenant should conduct an independent investigation and verification of all matters deemed to be material, including, but not limited to, statements of income and expenses. Consult your attorney, accountant, or other professional advisor.

