

5201 WEST ADAMS
STREET RETAIL SPACE AVAILABLE

W. Adams
BOULEVARD

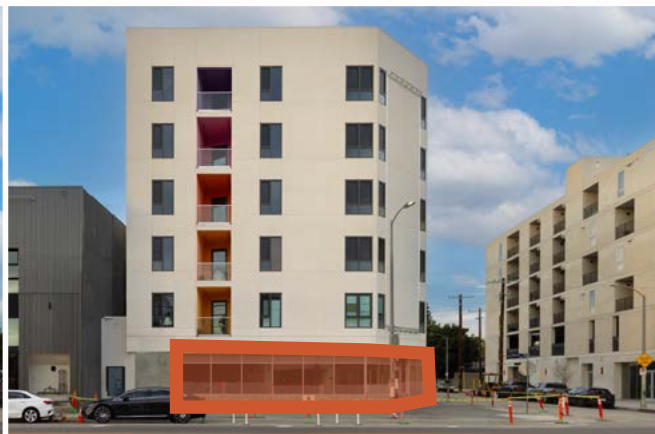
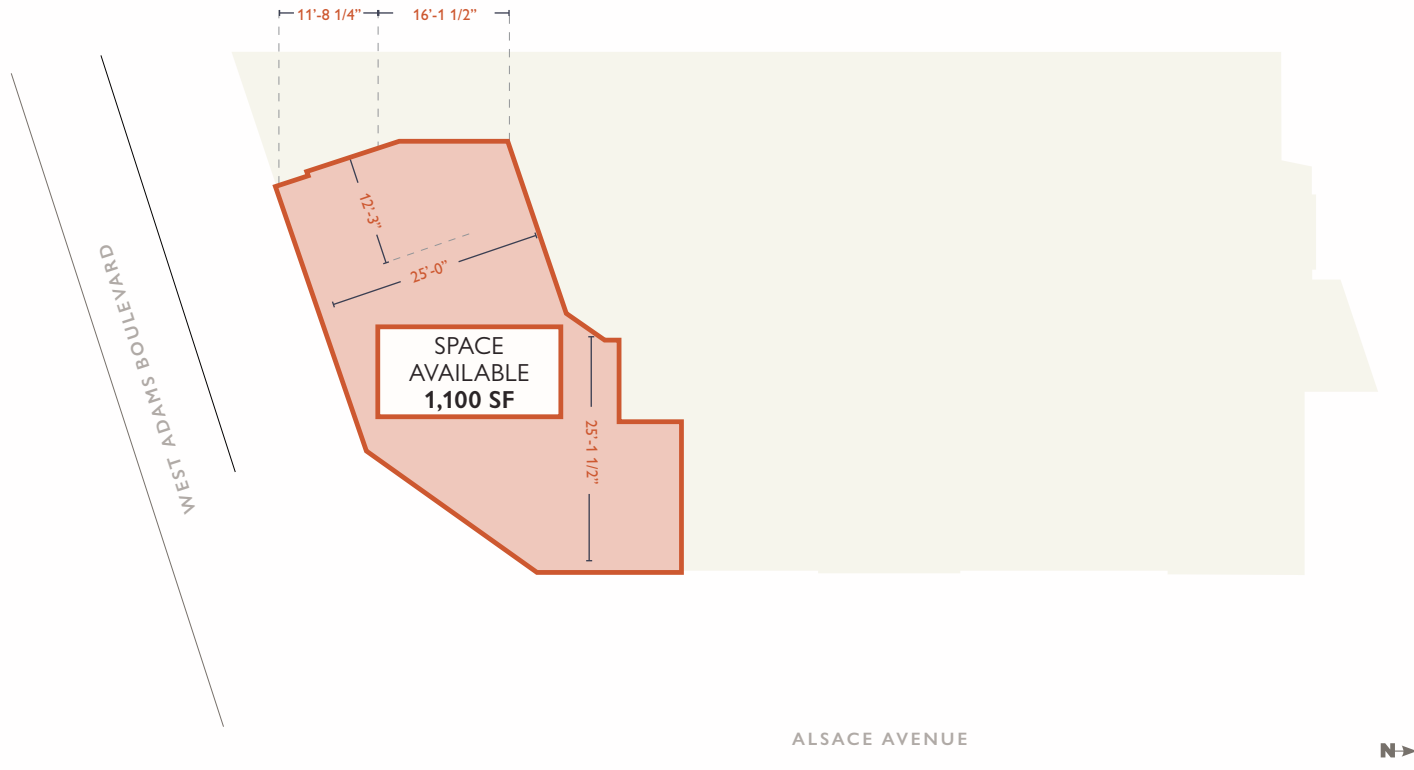


1,100 SF AVAILABLE

5201 West Adams is a modern, six-story, mixed use multifamily residence with 24 units, and 1,100 square feet of ground floor retail space. The new building is situated on West Adams Boulevard between South Redondo Blvd and Alsace Ave.

5201 WEST ADAMS

STREET RETAIL SPACE AVAILABLE



RETAIL

ON GROUND FLOOR

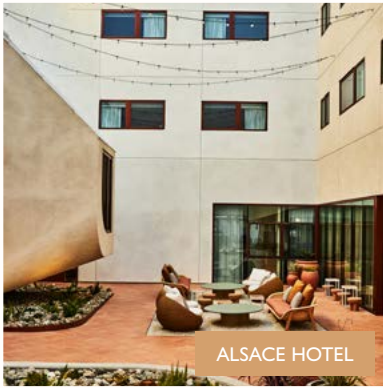
PROMINENT CORNER SPACE
ON ALSACE AVE WITH HIGH
VISIBILITY

IN CLOSE PROXIMITY TO THE
NEW BOUTIQUE HOTEL, ALSACE

WEST ADAMS NEIGHBORHOOD



VICKY'S ALL DAY



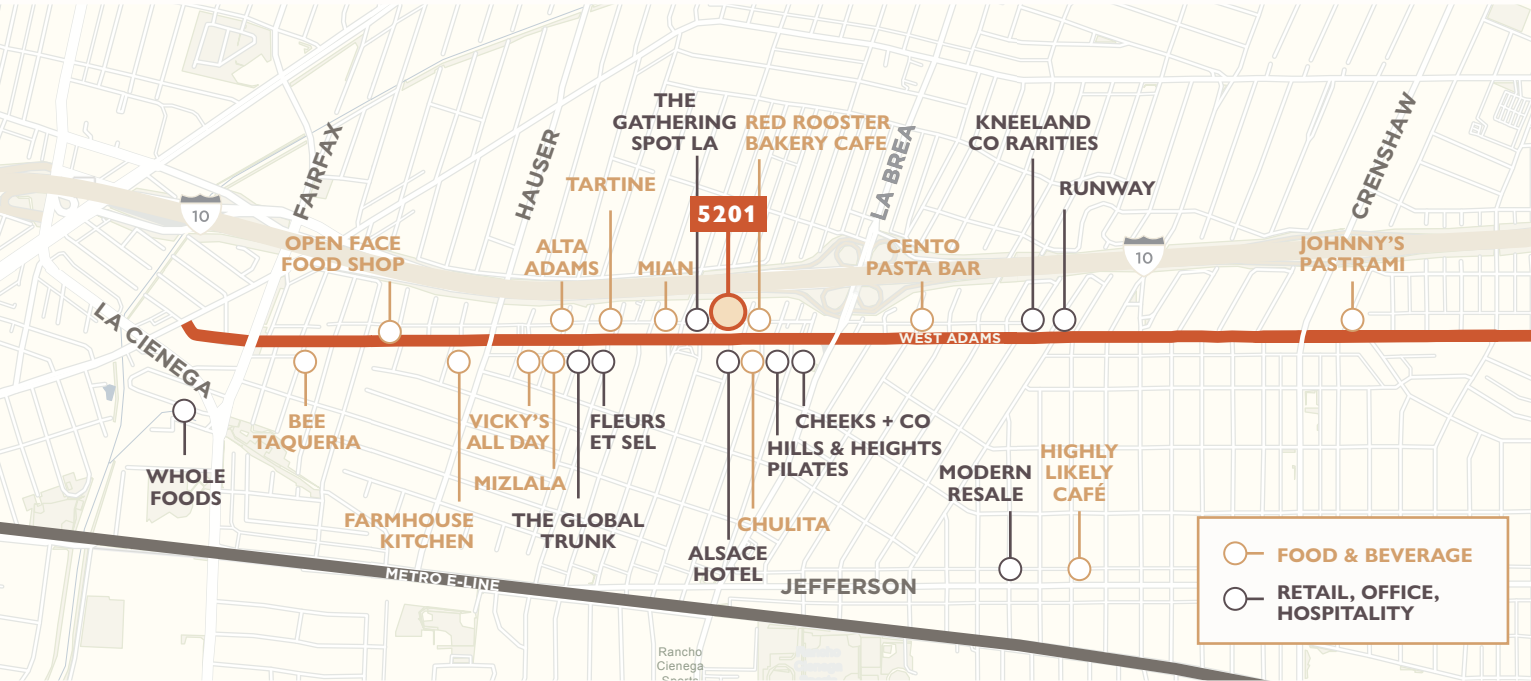
ALSACE HOTEL



CENTO



FARMHOUSE KITCHEN



24K+

DAILY TRAFFIC COUNT FROM ADAMS BOULEVARD

1,122,897

2024 POPULATION WITHIN A 5-MILE RADIUS

461,385

2024 HOUSEHOLDS WITHIN A 5-MILE RADIUS

FOR RETAIL LEASING INFORMATION:

JENNIFER MEADE #01298843
323.860.9523 | jmeade@cimgroup.com