

CBRE



74 W Broad Street, Bethlehem, PA

LIBERTY CENTER

@ DOWNTOWN BETHLEHEM



4,950-10,107 SF
Office Space Available



PROPERTY DETAILS

Liberty Center at 74 W Broad Street is a Class A office building with modern amenities located in the heart of historic downtown Bethlehem.

This building is the only building in downtown with an attached parking garage, providing easy access for clients and employees. The strategic location is nearby to a variety of dining and entertainment options, and is accessible to major transportation hubs.

The various office layouts can accommodate teams of different sizes. From open collaborative areas to private offices, the space can be customized to align perfectly with a tenant's operational requirements.

HIGHLIGHTS



A unique opportunity for turn-key build out



Nearby restaurants and shopping in bustling downtown Bethlehem



Attached parking garage for employees and customers

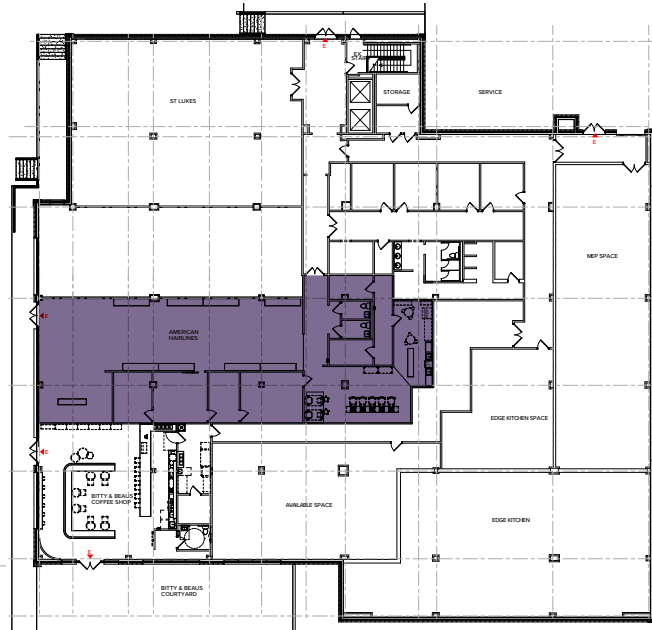


New gym available to the building



Regus moving into space in November

FLOOR PLANS



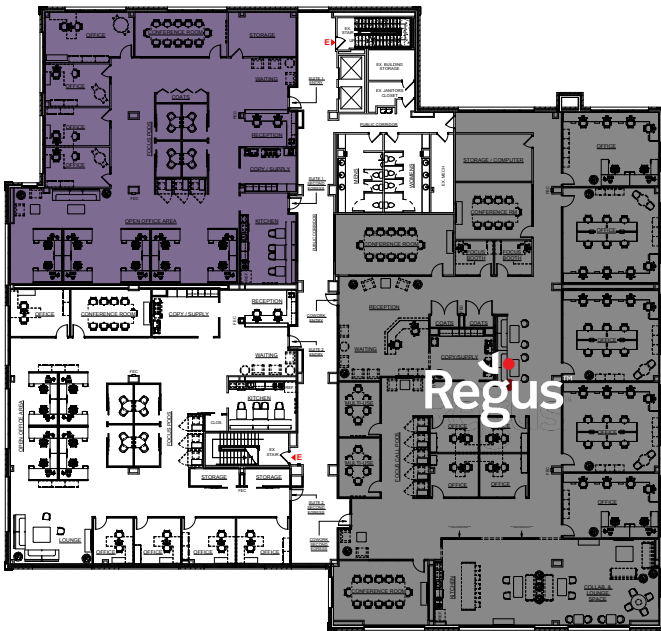
FIRST FLOOR

■ RETAIL SPACE - 5,100 SF



THIRD FLOOR

■ SUITE 300 - 3,027 SF



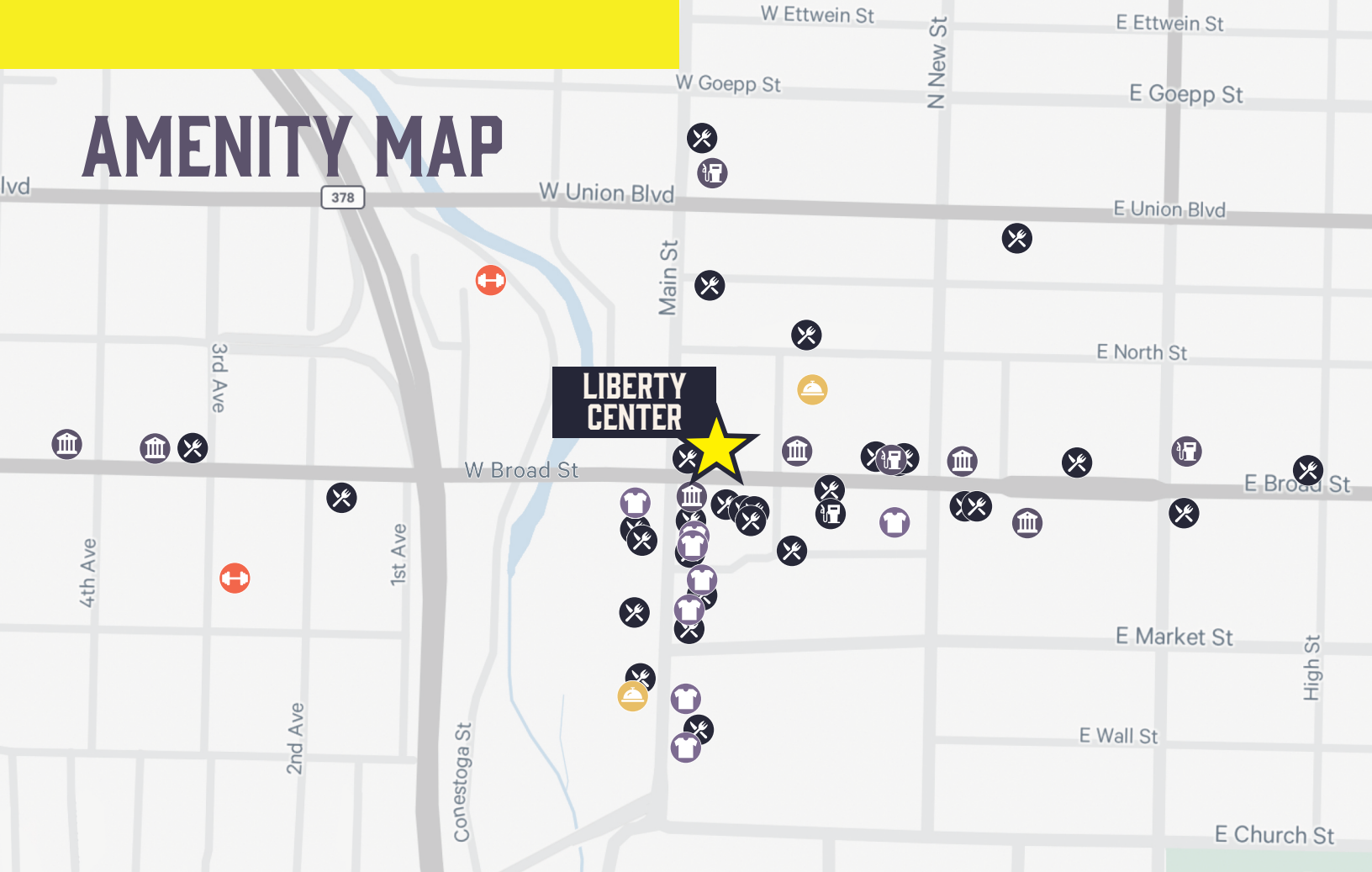
FOURTH FLOOR

■ SUITE A - 4,456 SF

■ OCCUPIED - REGUS



AMENITY MAP



LIBERTY CENTER

@ DOWNTOWN BETHLEHEM

CONTACTS

Jody King

Senior Vice President
+1 610 398 3384
jody.king@cbre.com

Pamela Hall

Associate
+1 610 573 5341
pamela.hall@cbre.com

Tyler King

Associate
+1 484 456 6909
tyler.king@cbre.com

Ben Scary

Client Services Coordinator
+1 610 573 5345
ben.scary@cbre.com

© 2026 CBRE, Inc. All rights reserved. This information has been obtained from sources believed reliable but has not been verified for accuracy or completeness. CBRE, Inc. makes no guarantee, representation or warranty and accepts no responsibility or liability as to the accuracy, completeness, or reliability of the information contained herein. You should conduct a careful, independent investigation of the property and verify all information. Any reliance on this information is solely at your own risk.

CBRE