

NEW CONSTRUCTION FOR LEASE

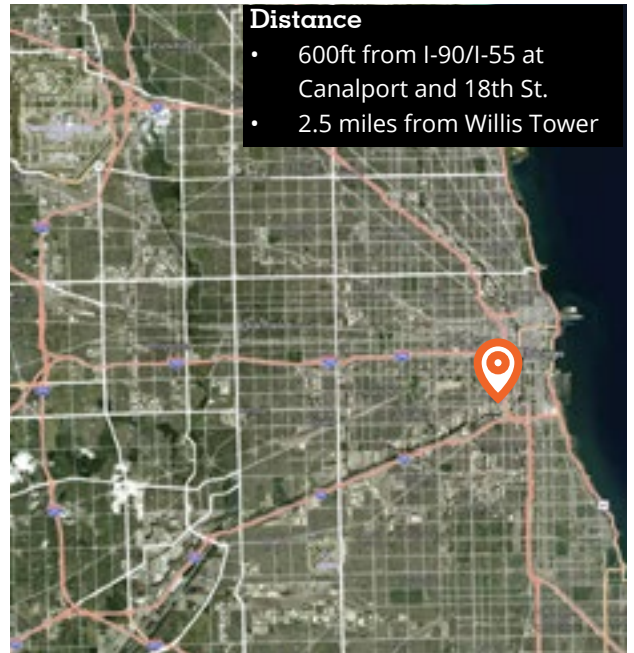
24' CLEAR FLEX SPACE

Immediate Access to Downtown

Available space for lease	12,000 sf
Office/Showroom	To suit
Ceiling height	24'
Dock	1 ext
Drive in doors	1 - 10' x 10'
Parking	8 cars
Power	To suit
Zoning	C3-2
Occupancy	2027
Lease rate	Subject to offer
Incentives	Enterprise zone #1

Distance

- 600ft from I-90/I-55 at Canalport and 18th St.
- 2.5 miles from Willis Tower



For further information

Steven A Kohn, SIOR
Principal
steven.kohn@avisonyoung.com
D +1 847 849 1912
M +1 847 341 6048

Jay Maher
Senior Vice President
jay.maher@avisonyoung.com
D +1 847 232 8605
M +1 773 520 5111

avisonyoung.com

For Lease

2100 S Canalport Ave
Chicago, IL 60608



For further information

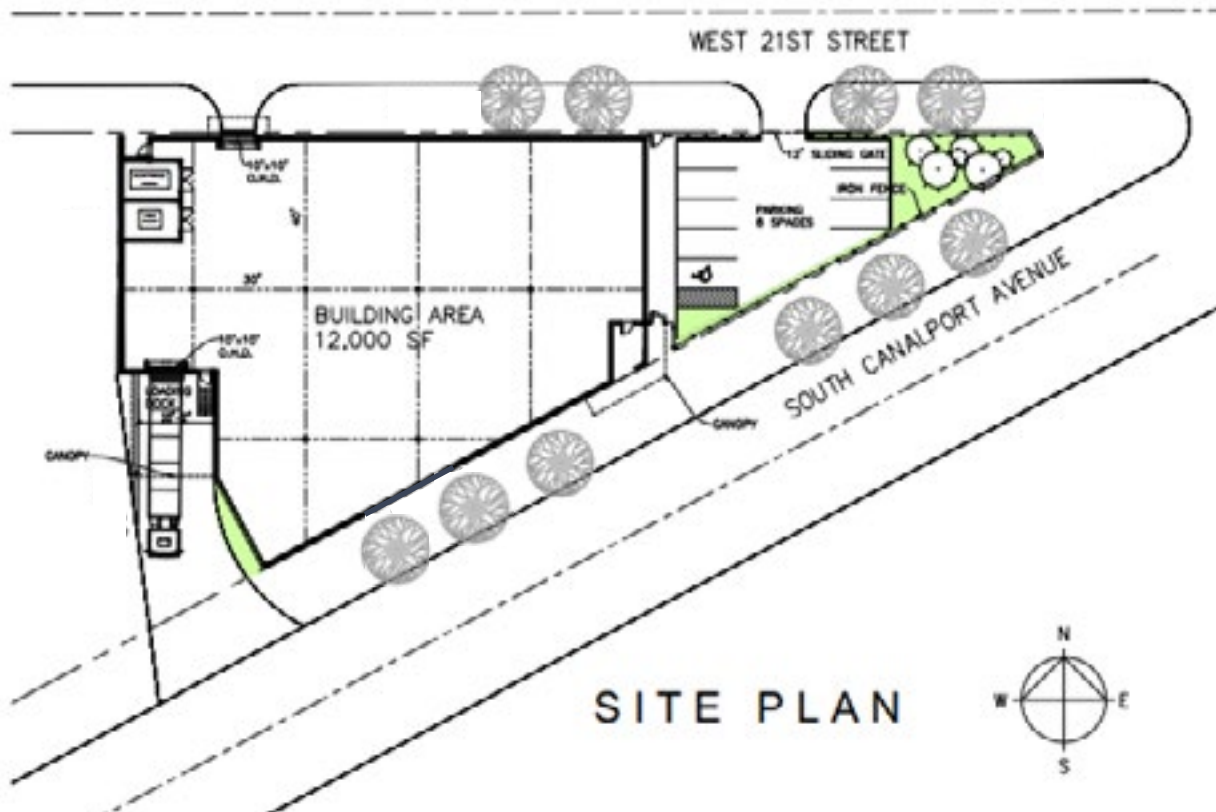
Steven A Kohn, SIOR
Principal
steven.kohn@avisonyoung.com
D +1 847 849 1912
M +1 847 341 6048

Jay Maher
Senior Vice President
jay.maher@avisonyoung.com
D +1 847 232 8605
M +1 773 520 5111

**AVISON
YOUNG**

For Lease

2100 S Canalport Ave
Chicago, IL 60608



**For further
information**

Steven A Kohn, SIOR
Principal
steven.kohn@avisonyoung.com
D +1 847 849 1912
M +1 847 341 6048

Jay Maher
Senior Vice President
jay.maher@avisonyoung.com
D +1 847 232 8605
M +1 773 520 5111

**AVISON
YOUNG**