



PROPERTY HIGHLIGHTS

- Available Units:
 - Unit 3B-4 - 2,516 SF
 - Availability Date: 4/1/2026
- Located adjacent to Northwood Plaza
- Close proximity to retail stores, grocery stores, specialty shops, and professional and business offices
- 3-5 year terms preferred.
- Build out allowance for qualified prospects
- 6.82/1000 Parking ratio
- **\$22.00 Modified Gross**
- Tenant pays own electric, water, and janitorial

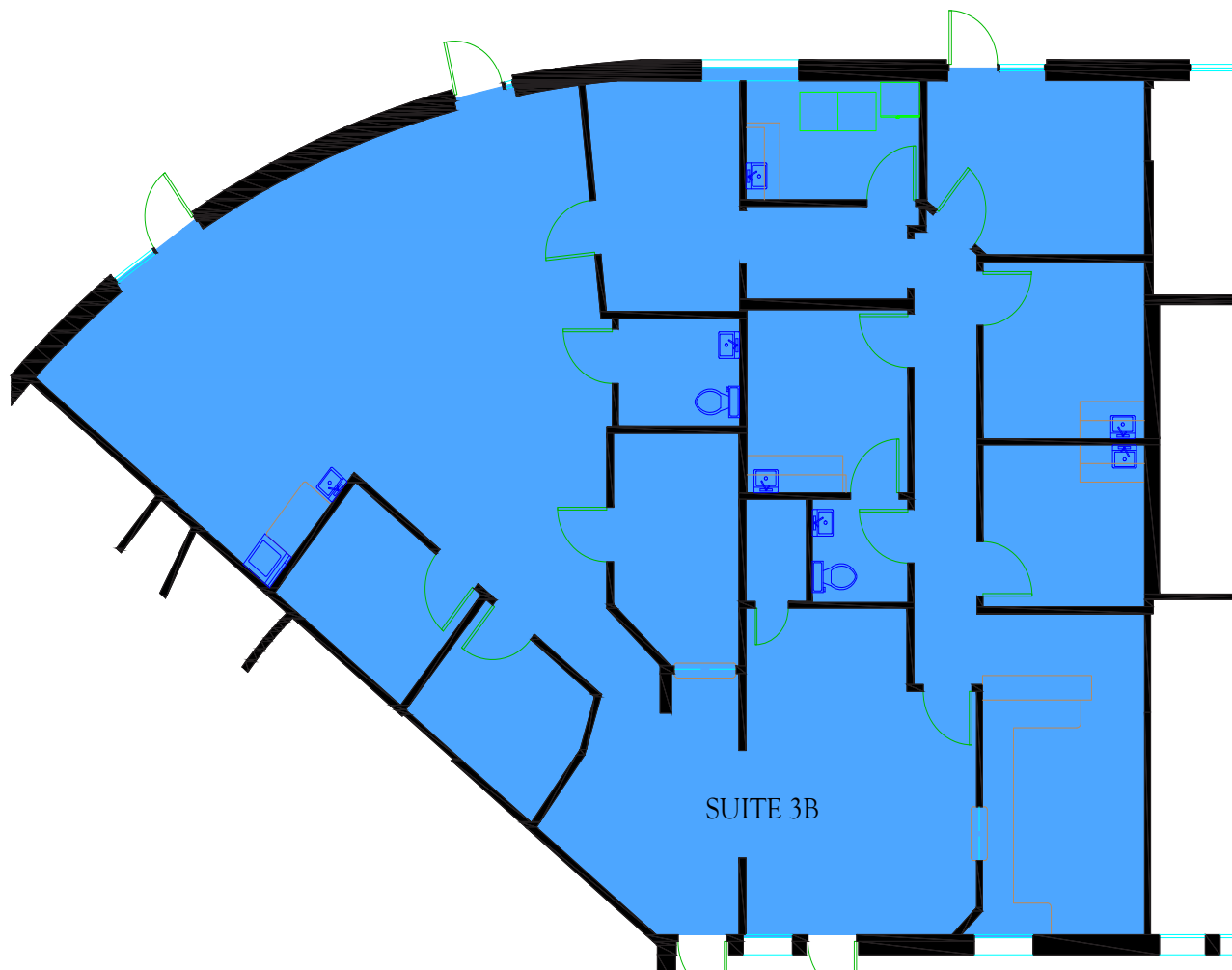
Northwood Medical Building “G” 3001 Eastland Blvd. Clearwater, FL 33761

Convenient Countryside area off of McMullen Booth Road with 14,658 (MOL) 9 professional offices, each letting out onto a beautiful shaded corner lot with classic brick exterior.

CONTACT

Richard Andretta, SIOR | randretta@thekraussorg.com
Office: (813) 885-5656
Cell: (813) 205-7721

Floorplan



Suite 3B-4 - 2,516 SF
3001 Eastland
Floor Plan Not exact
All critical dimensions must be
field verified.