

855 BRYANT STREET, SUITE 2 | SAN FRANCISCO

HIGHLIGHTS

- Office space directly across the street from Hall of Justice/San Francisco courthouse
- 1,222 square feet
- Expansive storefront windows
- Spacious, private bathroom
- New ADA code compliant entry
- Flexible lease term available
- Easy on/off freeway access
- Close to BART/MUNI
- Conveniently close to Financial District
- Monthly parking nearby

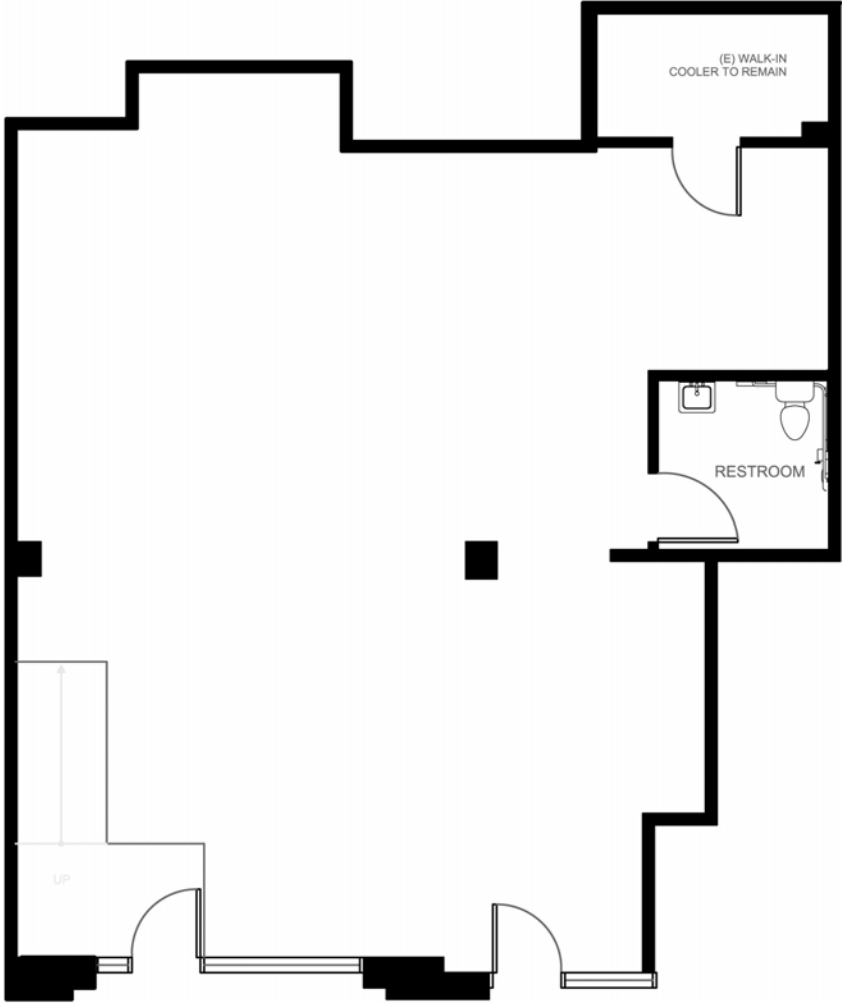


Office Rendering





FLOOR PLAN



MARTIN BUILDING COMPANY

Jill Helffenstein

jill@martinbuilding.com

415.348.4664

martinbuilding.com