

2059-2065 VENICE BLVD

LOS ANGELES, CA 90006

PRIME VENICE BLVD OWNER-USER OPPORTUNITY



FOR
SALE

Offered at:
\$5,000,000

MAJOR PROPERTIES
REAL ESTATE
Commercial • Industrial

EXECUTIVE SUMMARY

2059-2065 Venice Blvd, Los Angeles, CA 90006
For Sale | ±5,530 SF of Building & ±12,102 SF of Land



Major Properties proudly presents 2065 Venice Blvd, a freestanding commercial retail/flex property located along the highly trafficked Venice Boulevard corridor in the heart of Los Angeles' Koreatown/Mid-Wilshire submarket. The property consists of approximately 5,530 square feet situated on a 12,102 square foot lot and offers strong street visibility, gated on-site parking, and flexible LAC1 zoning suitable for a variety of retail, showroom, office, medical, and creative uses.

Strategically positioned near Downtown Los Angeles and major transportation corridors, the property benefits from dense surrounding demographics, strong daytime population, and approximately 43,000 vehicles per day along Venice Blvd. 2065 Venice Blvd presents an excellent opportunity for an owner-user, investor, or business seeking a highly visible commercial location within one of Los Angeles' most active urban trade areas.

\$5,000,000
PRICE

±\$413
PER LAND SF

±\$904
PER BLDG SF

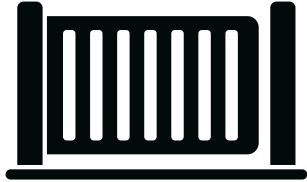
*Buyer to verify all information

PROPERTY HIGHLIGHTS

Freestanding Retail / Flex Property w/
Secure Parking & Strong Street Frontage



Prime owner-user
opportunity



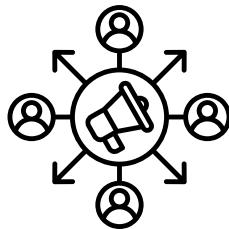
Gated and
secured on-site
parking



Convenient
access to DTLA



Freestanding
commercial
building



Strong street
presence



Excellent signage
exposure



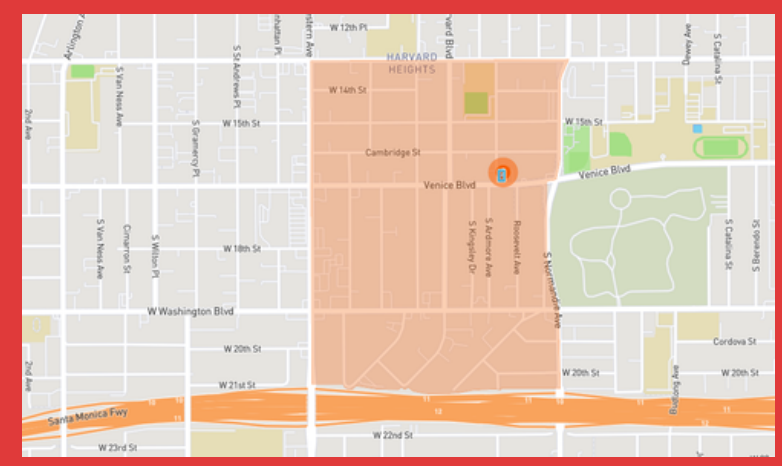
PROPERTY DETAILS

Address	2059-2065 Venice Blvd, Los Angeles, CA 90006
Property Type	Commercial / Retail
Price/SF	±\$904/bldg SF ±413/land SF
Building SF	*±5,530 SF
Lot SF	±12,102 SF
Stories	1
Parking	Surface - 27
Frontage	Venice Blvd
Year Built	1947
Zoning	<u>C1-1VL-HPOZ-CPIO</u>
Historict District	<u>Yes</u>
APN	5075-013-015 & 5075-013-016

*Per assesor's office
 **Buyer to verify all information

2065 Venice Blvd is a freestanding commercial property located along the highly trafficked Venice Boulevard corridor in the Koreatown/Mid-Wilshire submarket of Los Angeles. The property consists of approximately 5,530 square feet on a 12,102 square foot lot and features strong street visibility, gated parking, and flexible LAC1 zoning suitable for a variety of retail, office, showroom, medical, and creative uses.

Conveniently located near Downtown Los Angeles and major transportation corridors, the property benefits from dense surrounding demographics, strong traffic exposure, and a central urban location within one of Los Angeles' most active commercial corridors.

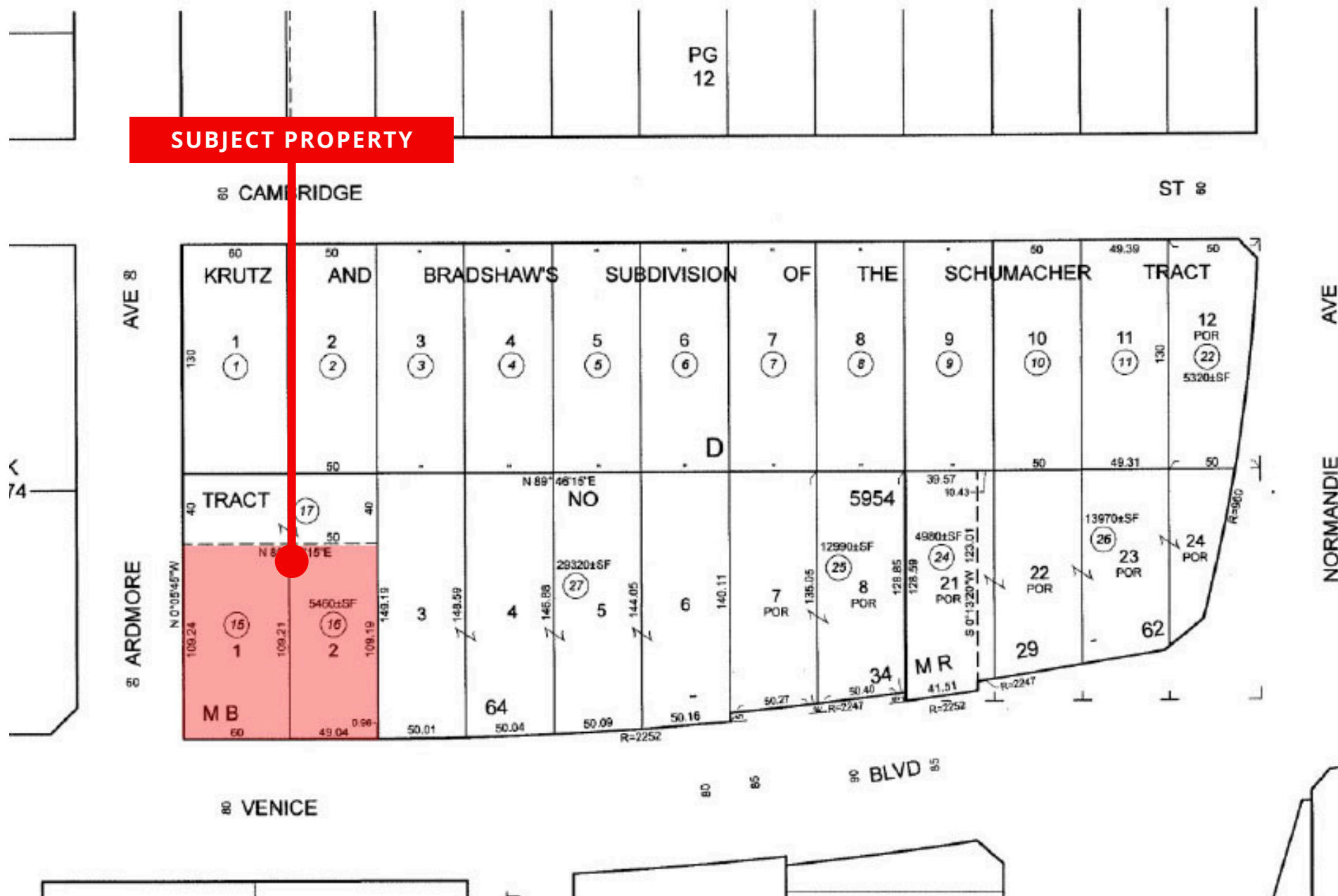








PARCEL MAP



THE AREA



2059-2065
VENICE BLVD

Normandie
Recreation Center

Colori Kitchen
Italian

Dollar Tree
Dollar store

4 MILES TO DTLA

Guadalajara Tires
& Auto Repair
Tire shop

VENICE BLVD

Beauty Club
supply store

THE AMENITIES



FOR MORE INFORMATION REGARDING THIS OPPORTUNITY, PLEASE CONTACT:



JESSE MCKENZIE

Senior Vice President

213.883.6875 office

714.883.6875 mobile

jesse@majorproperties.com

License: CA # 01939062



BRAD LUSTER

President

213.747.4154 office

213.276.2483 mobile

brad@majorproperties.com

License: CA # 00913803

The information contained in this offering material is confidential and furnished solely for the purpose of a review by prospective Buyers of the subject property and is not to be used for any other purpose or made available to any other person without the express written consent of Major Properties.

This Brochure was prepared by Major Properties. It contains summary information pertaining to the Property and does not purport to be all-inclusive or to contain all of the information that a prospective Buyer may desire. All information is provided for general reference purposes only and is subject to change. The summaries do not purport to be complete or accurate descriptions of the full documents involved, nor do they constitute a legal analysis of such documents.

This information has been secured from sources we believe to be reliable. We make no representations or warranties, expressed or implied, as to the accuracy of the information. References to square footage or age are approximate. Recipient of this report must verify the information and bears all risk for any inaccuracies.

MajorProperties.com

MAJOR PROPERTIES

1200 W Olympic Blvd

Los Angeles, CA 90015

