

# 1400 16<sup>th</sup> Street NW

## Office Suites

**07** LEASED

**06** LEASED

**05** LEASED

**04** 2,885 RSF  
AVAILABLE

**03** LEASED

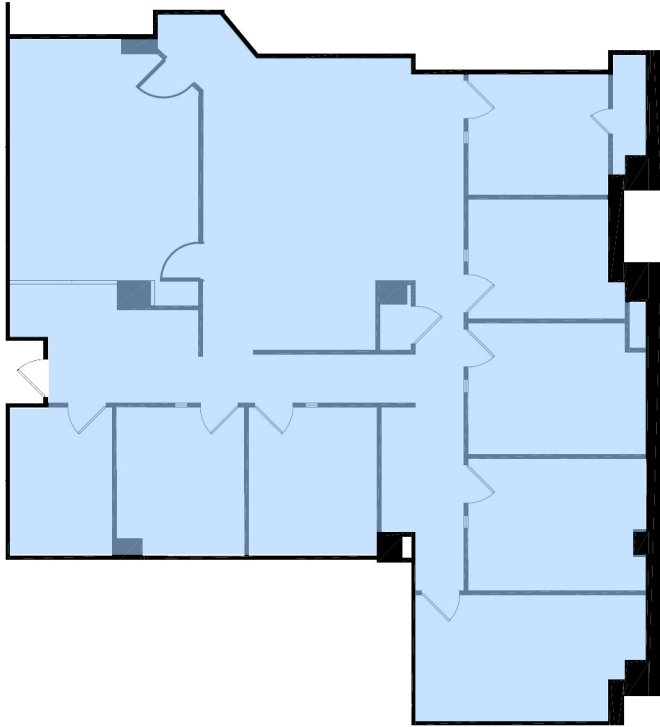
**02** 8,437 RSF  
AVAILABLE

**B1** 2,839 RSF  
AVAILABLE

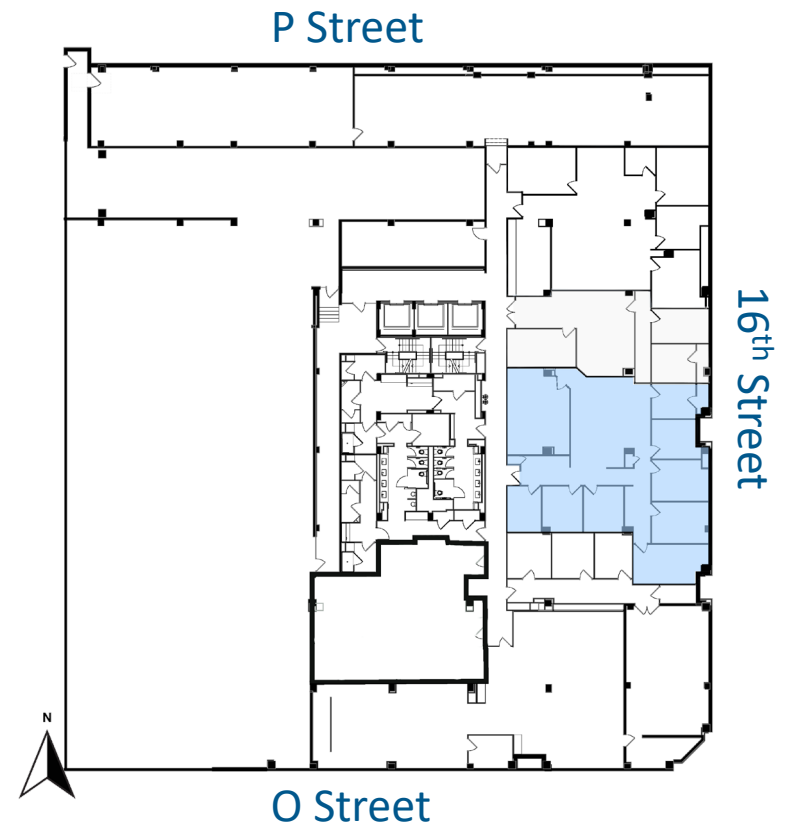


2,839 RSF

## B-1 Level | Suite B-02



- > Kitchenette/Pantry
- > Office intensive 2<sup>nd</sup> generation space
- > 8 private offices
- > Large conference room
- > Open work area for workstations/cubicles
- > Reception Area

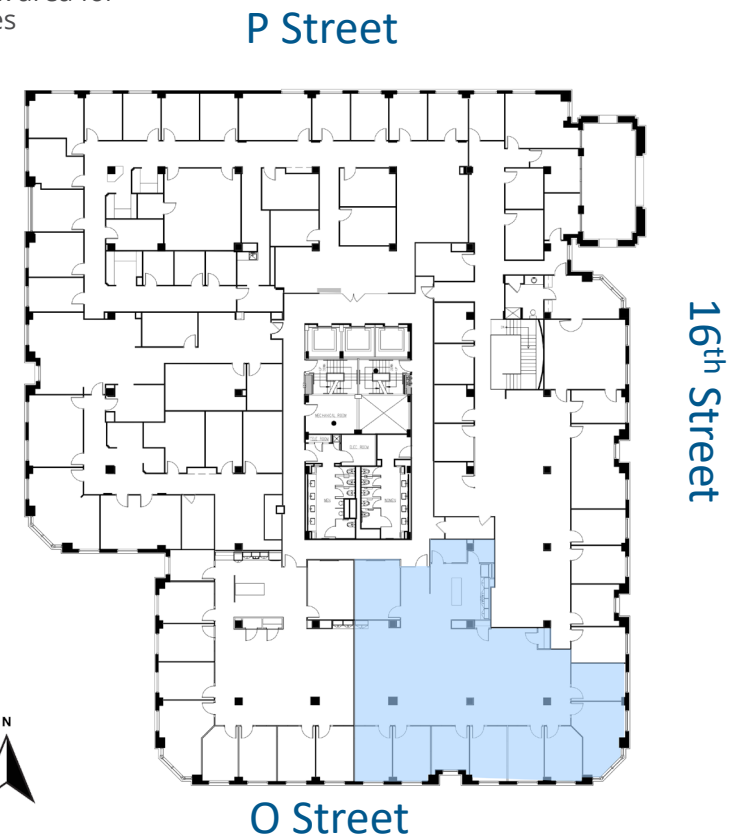


# 4,174 RSF

## 2<sup>nd</sup> Floor | Suite 210

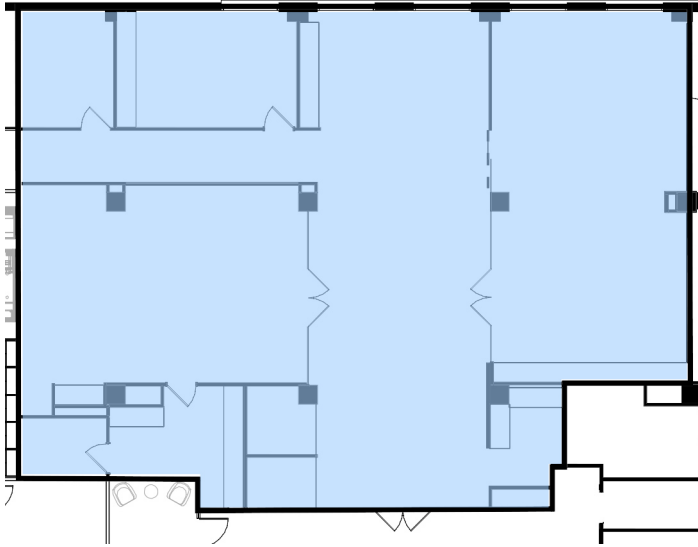


- > 1<sup>st</sup> generation pre-built spec office suite with wraparound windowline
- > Stunning 16<sup>th</sup> Street views
- > 8 windowed offices
- > Glass conference room
- > Expansive open work area for workstations/cubicles
- > Large flex room which is ideal for use as a phone room or wellness room
- > Reception area
- > Large pantry with millwork island

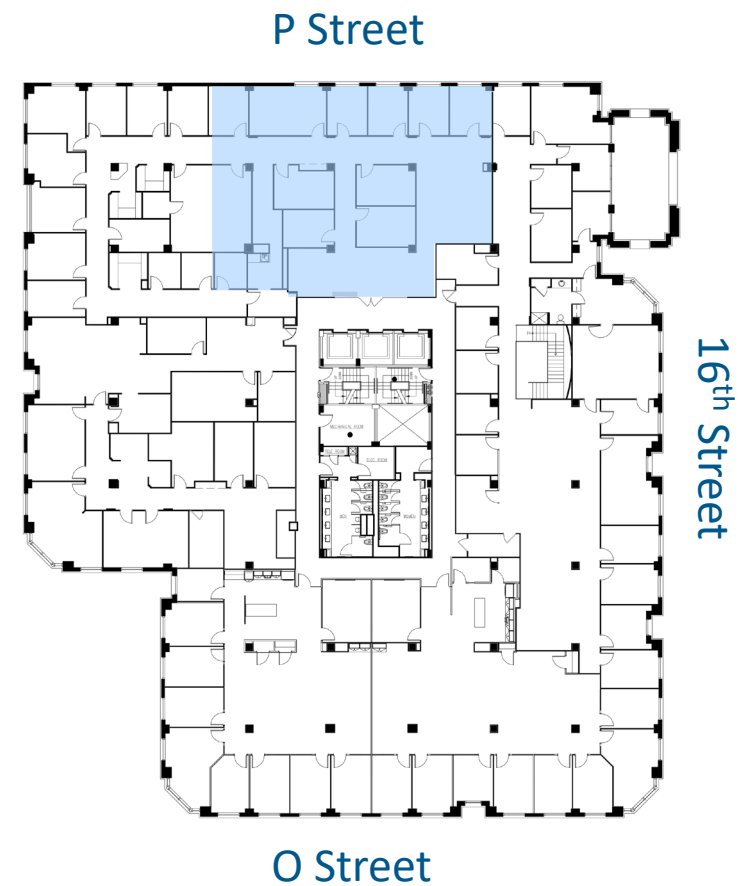


# 4,263 RSF

## 2<sup>nd</sup> Floor | Suite 230



- > Direct elevator exposure
- > Double glass suite entry doors
- > Large reception area with built-in reception desk
- > 2 large conference rooms
- > 2 phone rooms
- > 2 private offices
- > Pantry with storage room
- > Ideal layout for events and meetings



# 2,885 RSF

## 4<sup>th</sup> Floor | Suite 460

- > Brand new spec office suite
- > Impeccable 16<sup>th</sup> Street window line
- > Delivering 7/1/2026
- > 6 private offices
- > Conference room
- > Expansive open pantry/kitchenette with island
- > Large open work area for workstations and cubicles
- > Multiple storage closets

