

MEDICAL & OFFICE SUITES AVAILABLE

TEMECULA CORPORATE PLAZA CENTER

27450 YNEZ RD | TEMECULA, CA

PROPERTY HIGHLIGHTS:

- SUITES AVAILABLE FROM ±211 SF - ±9,351 SF
- MEDICAL SPACE AVAILABLE
- CLASS A OFFICE BUILDING
- IMMEDIATE OCCUPANCY
- JOIN A DIVERSE MIX OF OFFICE/MEDICAL/DENTAL TENANT GROUPS
- CENTRALLY LOCATED
- RESTAURANTS WITHIN EASY WALKING DISTANCE



JIM NADAL, CCIM

951.445.4520

jnadal@leetemecula.com

DRE# 01040679

LEE & ASSOCIATES
COMMERCIAL REAL ESTATE SERVICES

No warranty or representation has been made to the accuracy of the foregoing information. Terms of sale or lease and availability are subject to change or withdrawal without notice. Lee & Associates Commercial Real Estate Services, Inc. - Riverside. 25240 Hancock Avenue, Suite 100 - Murrieta, CA 92562 | Corporate ID# 01048055

MEDICAL & OFFICE SUITES AVAILABLE

TEMECULA

CORPORATE PLAZA CENTER

27450 YNEZ RD | TEMECULA, CA



YNEZ ROAD

YNEZ ROAD FRONTAGE
41,208 CARS PER DAY

MEDICAL & OFFICE SUITES AVAILABLE

TEMECULA CORPORATE PLAZA CENTER

27450 YNEZ RD | TEMECULA, CA



YNEZ RD (41,208 CPD)

TEMECULA
WINE
COUNTRY

15

RANCHO CALIFORNIA RD

TEMECULA
OLD TOWN

TEMECULA DUCK POND & PARK

Springhill Suites

Michaels

88Ranch

amc

chilis

SPRINGHILL SUITES

Springhill Suites

KIMBERLY HORTON

LONGHORN RESTAURANT

BAKING

daphnes

WILLIE PARGO

SUBWAY

VONS

CVS pharmacy

Starbucks

CHASE

verizon

Mobil

UBC

active

HomeGoods

CHICKEN edible

Publix

Target

UFCET

ALDI



MEDICAL & OFFICE SUITES AVAILABLE

TEMECULA CORPORATE PLAZA CENTER

27450 YNEZ RD | TEMECULA, CA



MEDICAL & OFFICE SUITES AVAILABLE

TEMECULA CORPORATE PLAZA CENTER

27450 YNEZ RD | TEMECULA, CA



**CLICK ON SUITE NUMBER
TO VIEW FLOORPLAN**

AVAILABILITY

SUITE	RENTABLE SQ. FT.	MONTHLY RENTAL RATE*	MONTHLY STARTING MEDICAL RATE**	COMMENTS
110-C	1,145 SF	\$2.25 PSF	\$2.75 PSF	Reception and 3 private offices
200	4,303 SF	\$2.25 PSF	\$2.75 PSF	Large reception/waiting room, 12 private offices, conference room, multiple storerooms, large kitchen/lunch room. Contact agent for showing instructions.
208/209	1,732 SF	\$2.15 PSF	\$2.75 PSF	Contact agent for details.
213	261 SF	\$2.25 PSF	--	Single room office. <i>Rate includes electricity and janitorial.</i>
216	211 SF	\$2.25 PSF	--	Single room office. <i>Rate includes electricity and janitorial.</i>
300	9,351 SF	\$2.15 PSF	\$2.75 PSF	Large reception/waiting room, 10 private offices, conference room, large lab/processing room, multiple storerooms, large open bullpens, kitchen/lunch room.
300 A-D	VARIOUS	\$2.25 PSF	\$2.75 PSF	See floorplan for various sizes and configurations
314	1,437 SF	\$2.15 PSF	\$2.75 PSF	3 private offices and large open bullpen.

*MONTHLY RATES ARE FULL SERVICE, MODIFIED GROSS.

**JANITOR SERVICES NOT PROVIDED FOR MEDICAL USES.

LANDLORD PROVIDES IN-SUITE JANITORIAL SERVICE; TENANT RESPONSIBLE FOR ITS OWN SEPARATE METERED ELECTRIC.

Rev. 06/08/2026

JIM NADAL, CCIM

951.445.4520

jnadal@leetemecula.com

DRE# 01040679



No warranty or representation has been made to the accuracy of the foregoing information. Terms of sale or lease and availability are subject to change or withdrawal without notice. Lee & Associates Commercial Real Estate Services, Inc. - Riverside. 25240 Hancock Avenue, Suite 100 - Murrieta, CA 92562 | Corporate ID# 01048055

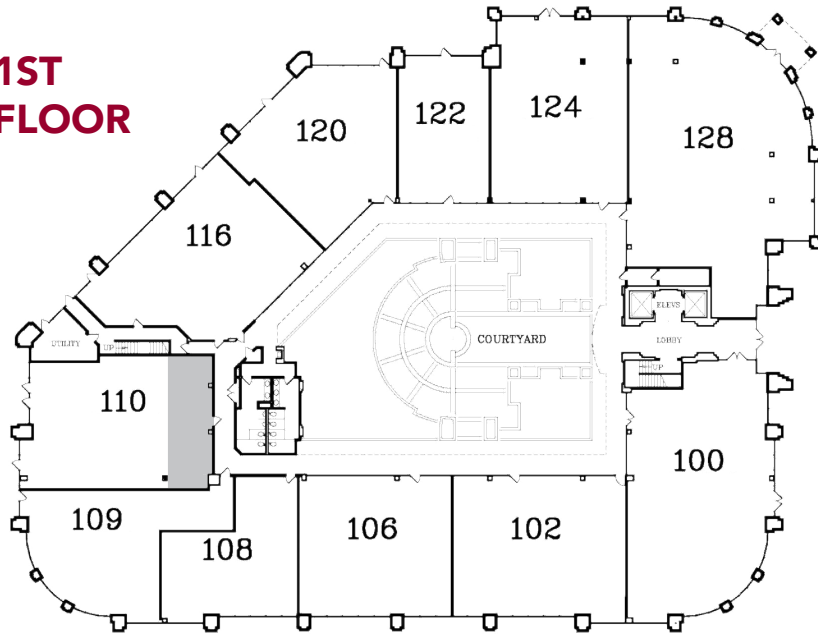
TEMECULA CORPORATE PLAZA CENTER

27450 YNEZ RD | TEMECULA, CA

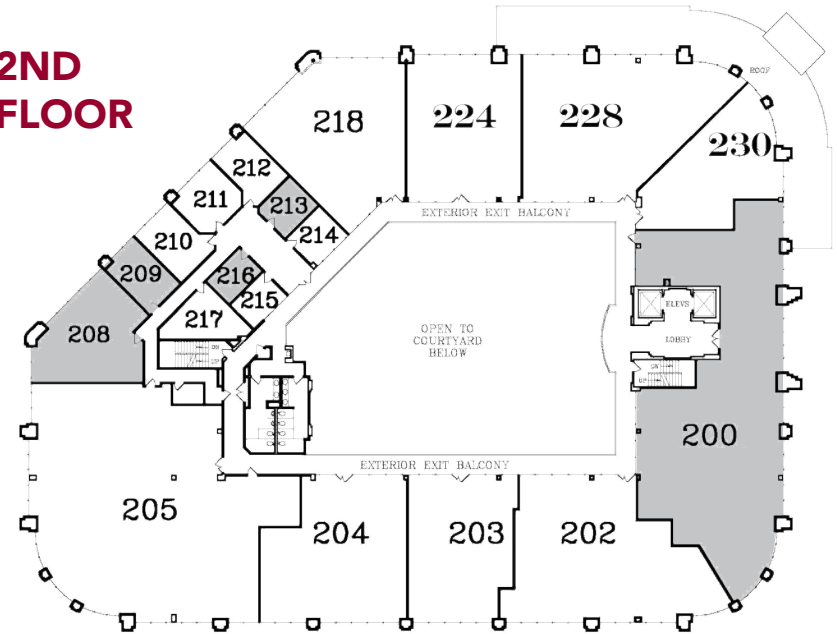


CLICK ON SUITE NUMBER
TO VIEW FLOORPLAN

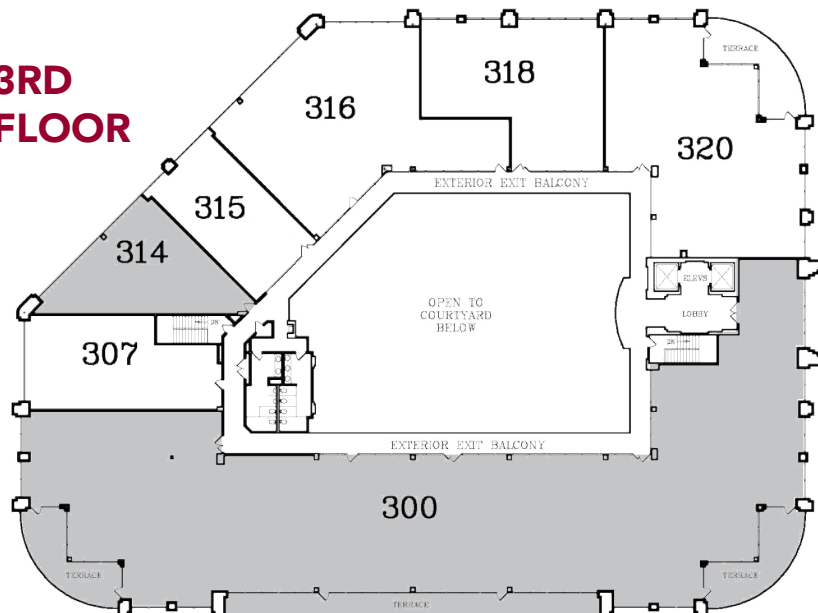
1ST FLOOR



2ND FLOOR



3RD FLOOR



JIM NADAL, CCIM

951.445.4520

jnadal@leetemecula.com

DRE# 01040679



No warranty or representation has been made to the accuracy of the foregoing information. Terms of sale or lease and availability are subject to change or withdrawal without notice. Lee & Associates Commercial Real Estate Services, Inc. - Riverside. 25240 Hancock Avenue, Suite 100 - Murrieta, CA 92562 | Corporate ID# 01048055

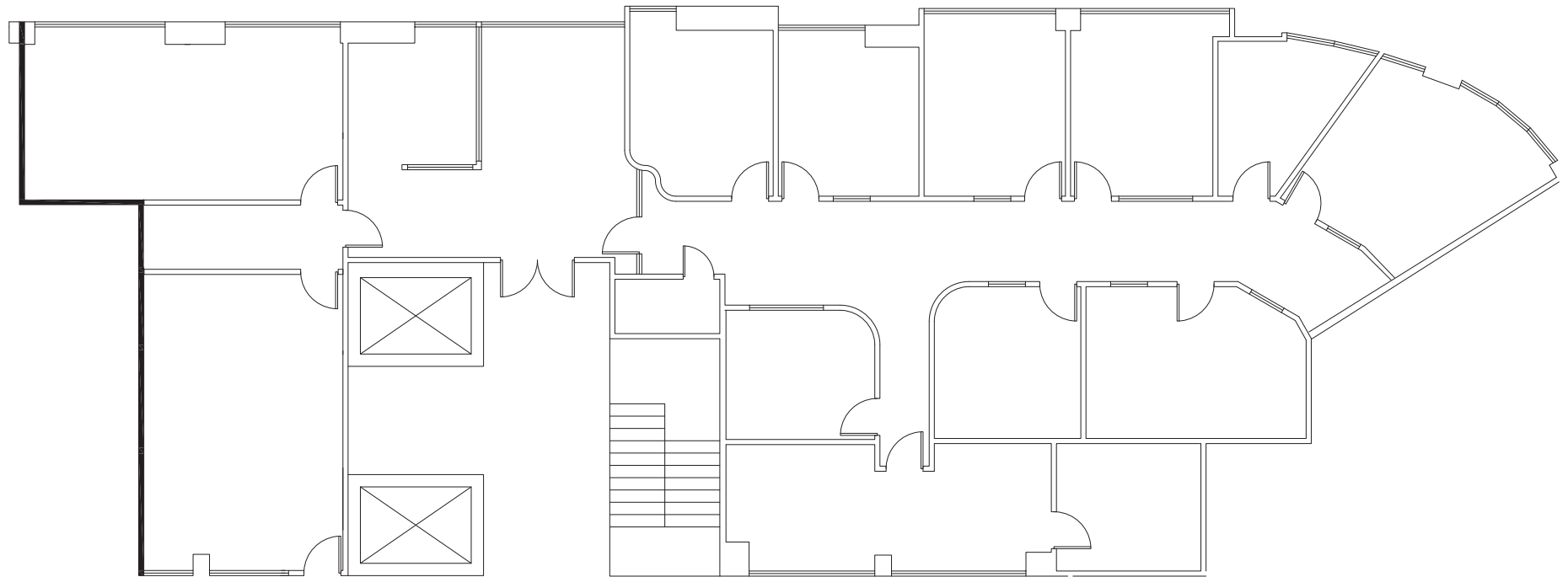
MEDICAL & OFFICE SUITES AVAILABLE

TEMECULA

CORPORATE PLAZA CENTER

27450 YNEZ RD | TEMECULA, CA

SUITE 200 - 4,303 RSF



MEDICAL & OFFICE SUITES AVAILABLE

TEMECULA

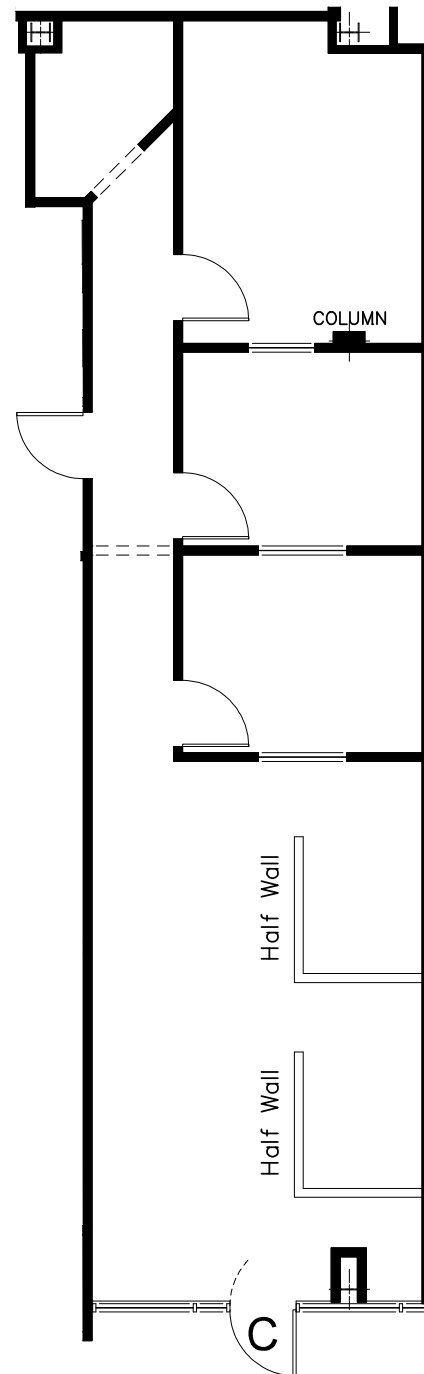
CORPORATE PLAZA CENTER

27450 YNEZ RD | TEMECULA, CA

SUITE 110-C - 1,145 RSF



[CLICK HERE
FOR A VIDEO TOUR](#)



MEDICAL & OFFICE SUITES AVAILABLE

TEMECULA

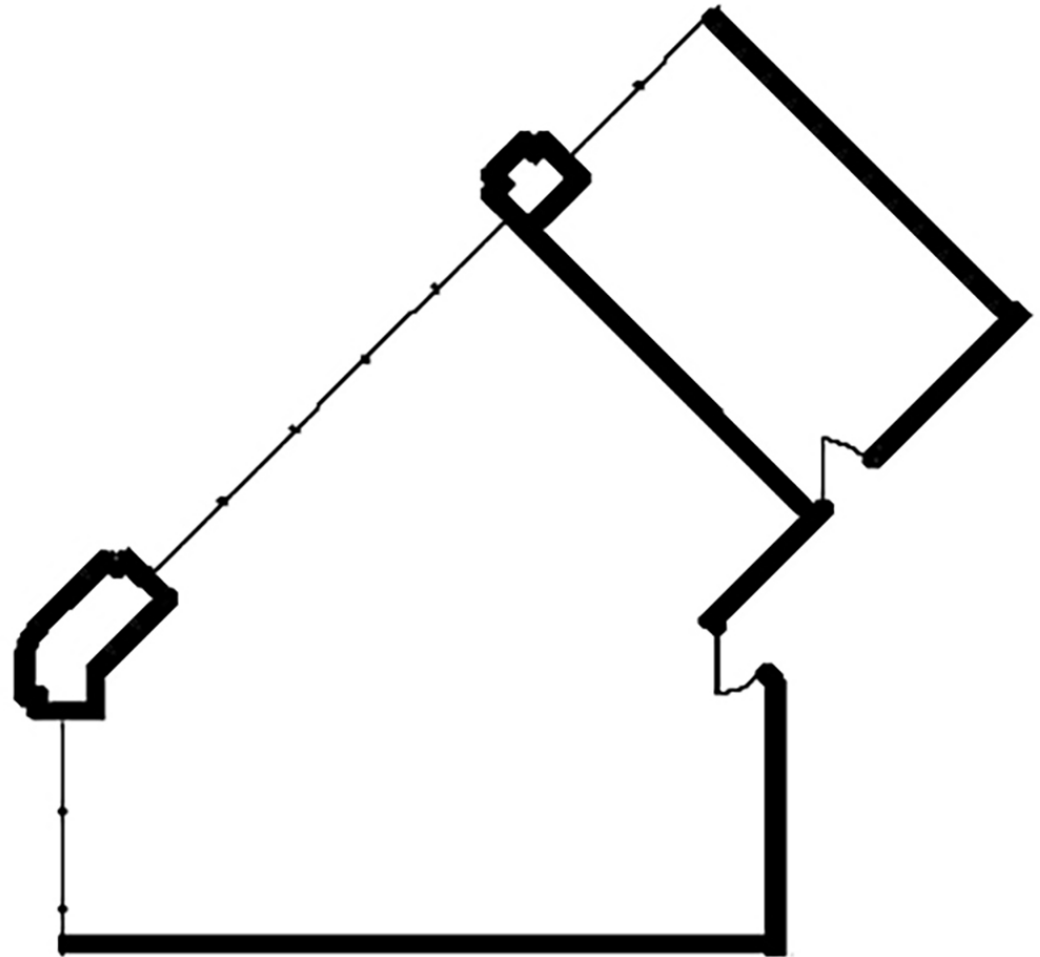
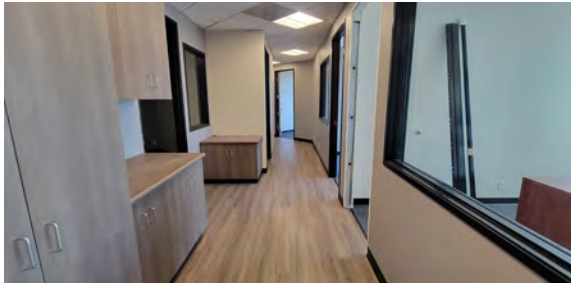
CORPORATE PLAZA CENTER

27450 YNEZ RD | TEMECULA, CA

SUITES 208/209 - 1,732 RSF



[CLICK HERE
FOR A VIDEO TOUR](#)



MEDICAL & OFFICE SUITES AVAILABLE

TEMECULA

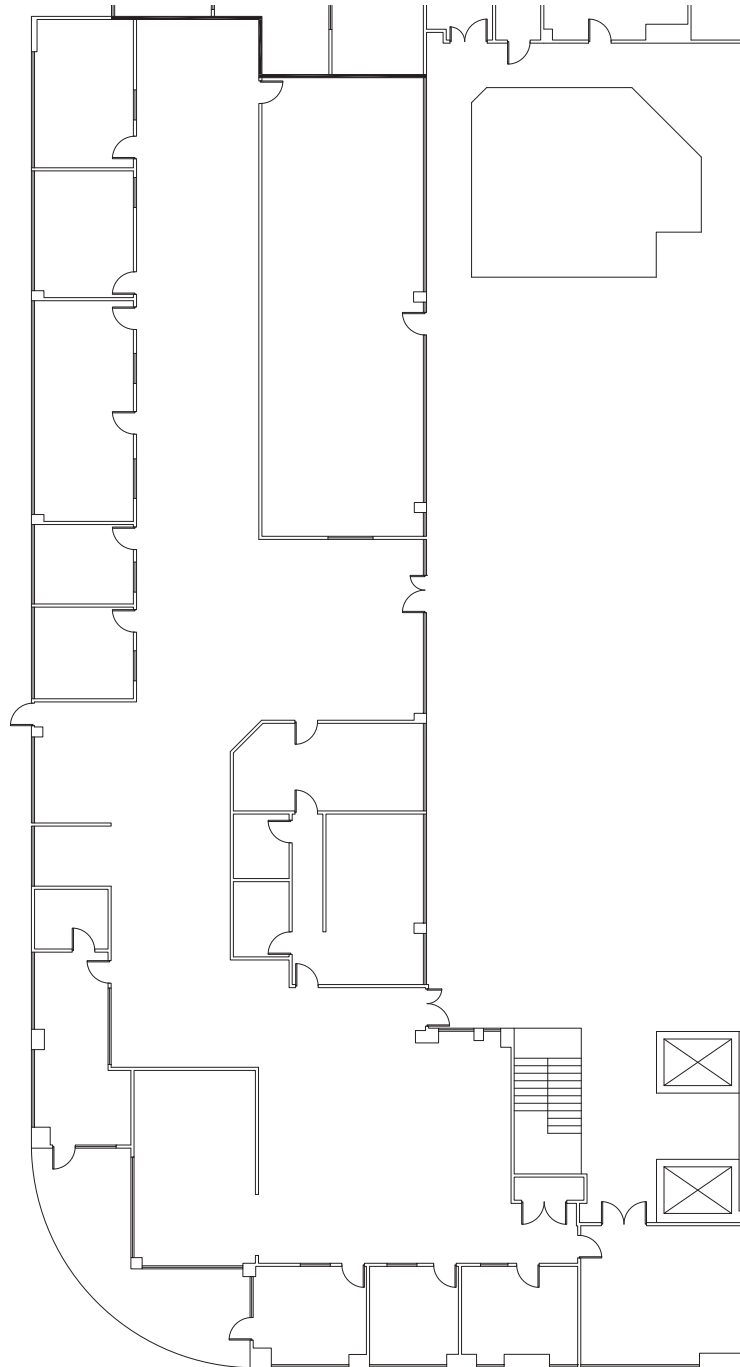
CORPORATE PLAZA CENTER

27450 YNEZ RD | TEMECULA, CA

SUITE 300 - 9,351 RSF



[CLICK HERE
FOR A VIDEO TOUR](#)



MEDICAL & OFFICE SUITES AVAILABLE

SUITE 300 A-D - VARIOUS RSF

TEMECULA

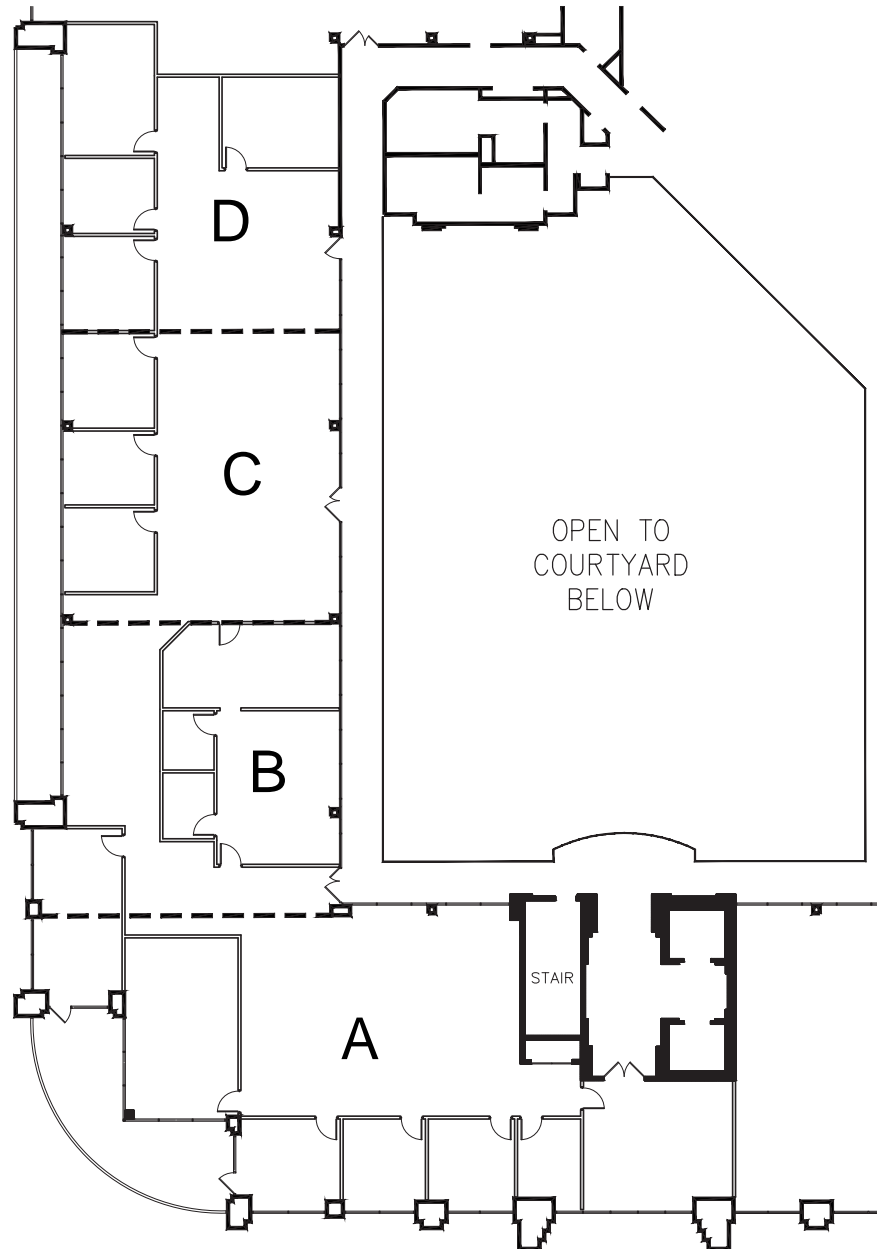
CORPORATE PLAZA CENTER

27450 YNEZ RD | TEMECULA, CA



[CLICK HERE
FOR A VIDEO TOUR](#)

- A - 3,518 SF**
- B - 2,035 SF**
- C - 1,949 SF**
- D - 1,824 SF**



MEDICAL & OFFICE SUITES AVAILABLE

TEMECULA

CORPORATE PLAZA CENTER

27450 YNEZ RD | TEMECULA, CA

SUITE 314 - 1,437 RSF



[CLICK HERE FOR A VIDEO TOUR](#)



CITY OF TEMECULA

Over the past two decades, the City of Temecula has evolved into an innovative, dynamic City and a regional economic center for Southwest Riverside County, all while retaining its small town feel and character. Many families began to move to the area from San Diego and Orange County drawn by the affordable housing prices and the popular wine country. Temecula is an affluent community. Supported by high median and mean income levels as well as the city's favorable tourist and resort industries, the city is a prominent tourist destination. Temecula remains the ideal city for relocating, expanding and developing a new project in Southern California.



108,749
ESTIMATED POPULATION
(2024)



\$145,346
AVERAGE HH INCOME
(2024)



70,937
DAYTIME POPULATION
(2024)



MEDICAL & OFFICE SUITES AVAILABLE

TEMECULA

CORPORATE PLAZA CENTER

27450 YNEZ RD | TEMECULA, CA

JIM NADAL, CCIM

951.445.4520

jnadal@leetemecula.com

DRE# 01040679



No warranty or representation has been made to the accuracy of the foregoing information. Terms of sale or lease and availability are subject to change or withdrawal without notice. Lee & Associates Commercial Real Estate Services, Inc. - Riverside. 25240 Hancock Avenue, Suite 100 - Murrieta, CA 92562 | Corporate ID# 01048055