

4950-4970 Allison Parkway

VACAVILLE, CALIFORNIA

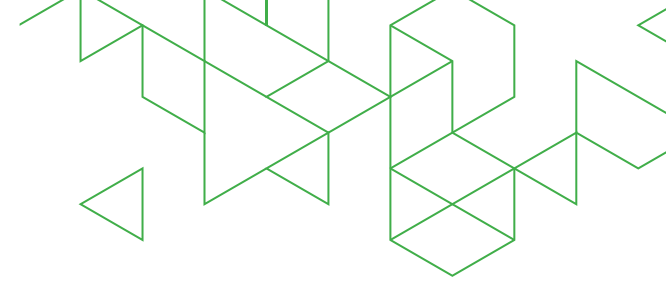
±2,880-19,200 SF OF CONTIGUOUS SPACE WITH 6 ADJACENT ±3,200 SF UNITS



FOR LEASE | LIGHT INDUSTRIAL SPACES WITH DOCK HIGH
LOADING AND OUTDOOR STORAGE LOCATED IN A PARK-LIKE
SETTING OFF HIGHWAY 505 AND HWY I-80.

CBRE

PROPERTY OVERVIEW



Three building business park offers light industrial and and yard spaces located in a park-like setting off Highway 505, offering quick access to I-80.



±55,680 SF Industrial Park



Featuring storefront warehouse/office



100-200 amps per unit



Fire sprinkler system



Dock high loading and yard space available



Warehouses feature 12' x 14' roll-up doors and 20' average clear height



Non-exclusive off street parking available



Freshly painted exterior and revamped landscaping

LOCATION MAP

ALLISON PARKWAY

AREA HIGHLIGHTS

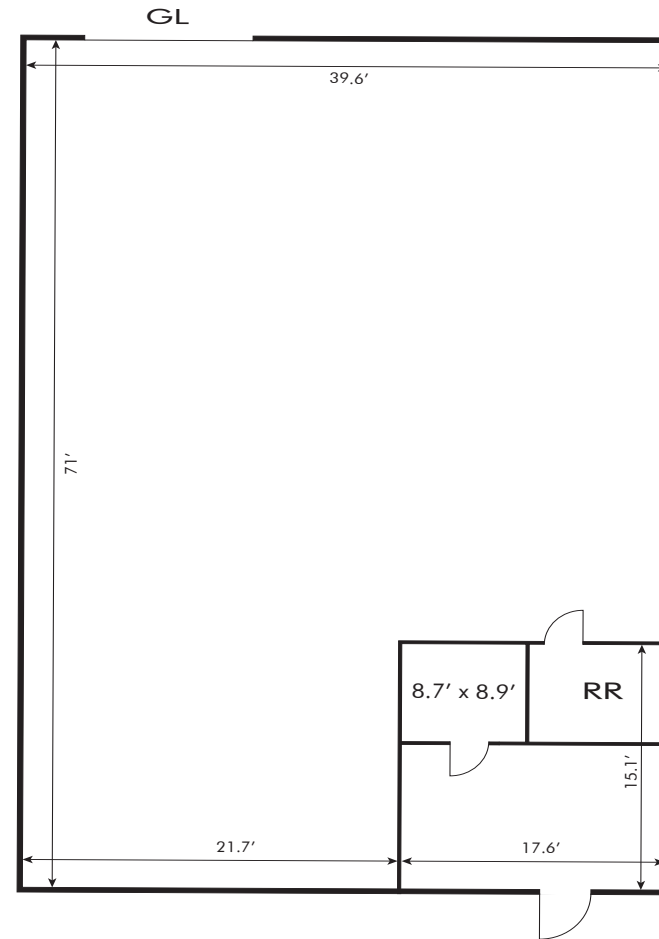
QUICK ACCESS to I-505 and I-80 with I-5 connectivity and close proximity to hotspot consumer market



FLOOR PLANS

4950 ALLISON PARKWAY STE E - ± 2,880 SF

- 12' x 14' Grade Level Door
- Reception and Private Office
- One (1) Restroom
- 20' Clear Height



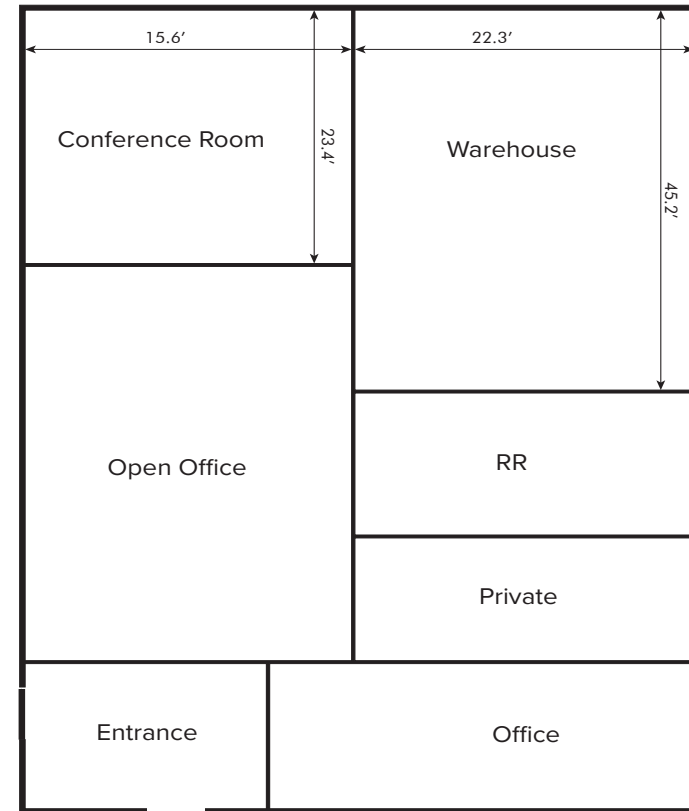
Suite E- Floorplan

* Floorplans not to scale

FLOOR PLANS

4950 Allison Parkway STE F - ±2,880 SF

- Revamped office space with high end finishes
- Reception with two (2) private offices, conference room and open office area
- Bullpen
- Conference Room
- 12'x14' Grade Level Door
- 20' Clear Height
- One (1) Restroom



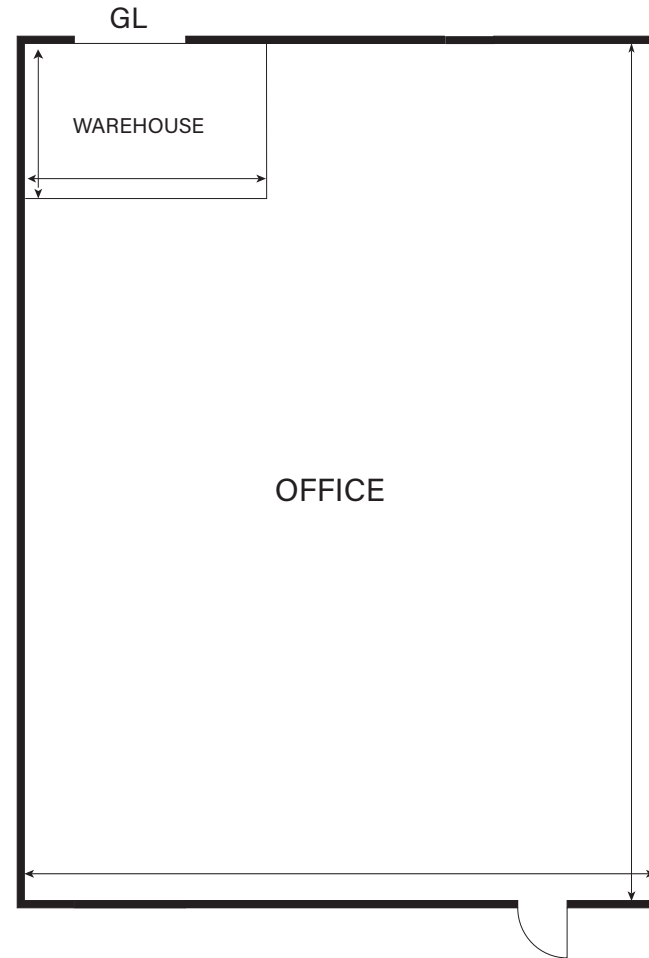
Suite F- Floorplan

* Floorplans not to scale

FLOOR PLANS

4960 Allison Parkway STE A & L - ±3,200 SF

- High Image Office Spaces
- Two (2) Restrooms
- One (1) 12'x14' Grade Level Door
- Mezzanine storage possible
- 20' Clear Height



Suite A & L- Floorplan

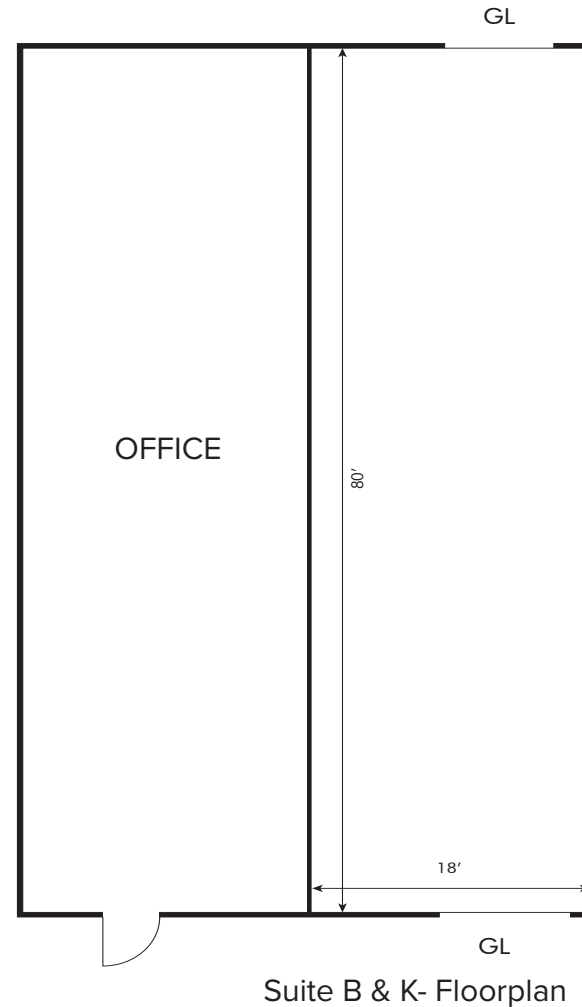
* Floorplans not to scale



FLOOR PLANS

4960 Allison Parkway STE B & K - ±3,200 SF

- 50% office / 50% warehouse
- Functional new office space
- Two (2) 12'x14' Grade Level Doors
- One (1) Restroom with Shower
- 20' Clear Height

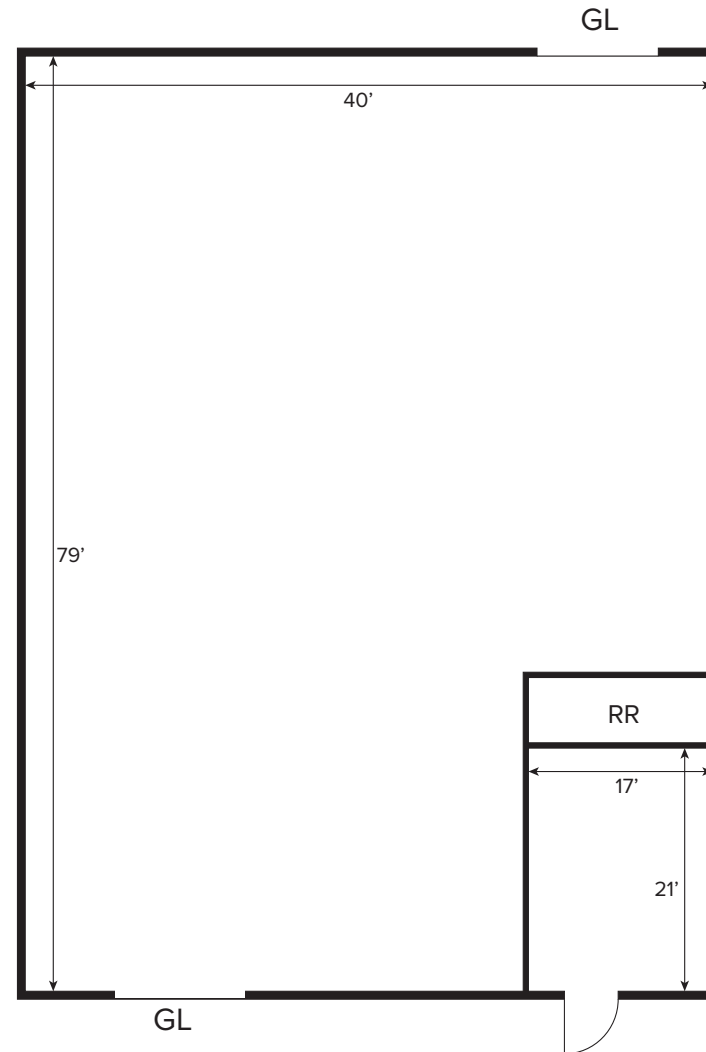


* Floorplans not to scale

FLOOR PLANS

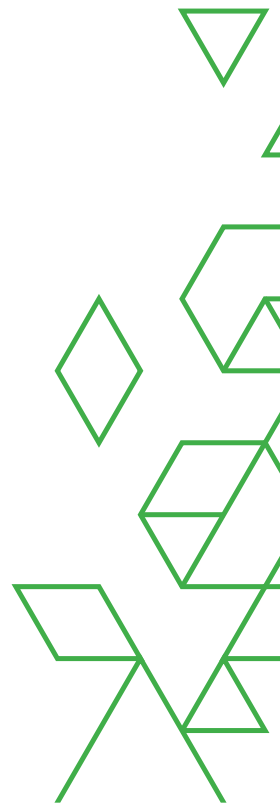
4960 Allison Parkway STE C & J - ±3,200 SF

- Functional refurbished office space
- Two (2) 12'x14' Grade Level Doors
- One (1) Restroom
- 20' Clear Height



Suite C & J- Floorplan

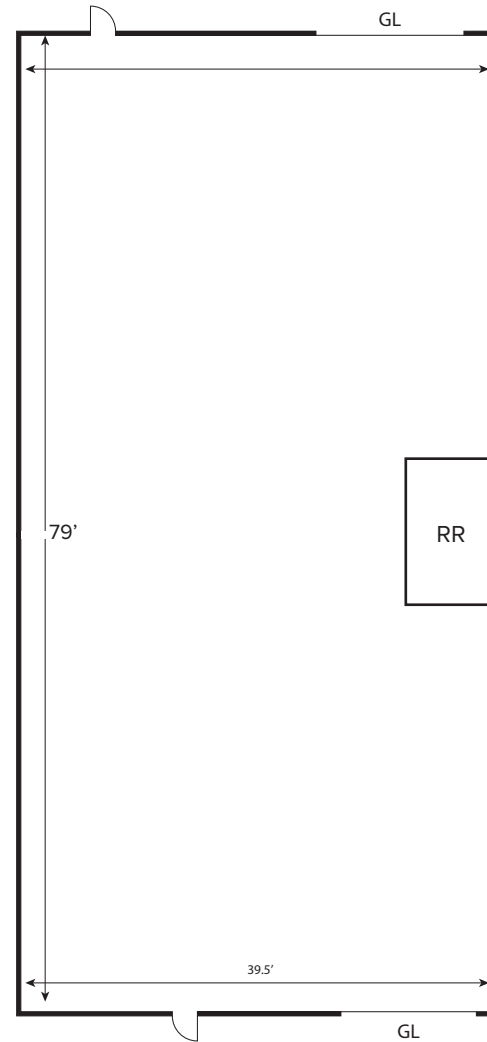
* Floorplans not to scale



FLOOR PLANS

4960 Allison Parkway STE D & I - ±3,200 SF

- Full warehouse space
- Reception
- One (1) Restroom
- Two (2) 12'x14' Grade Level Door
- 20' Clear Height



Suite D & I- Floorplan

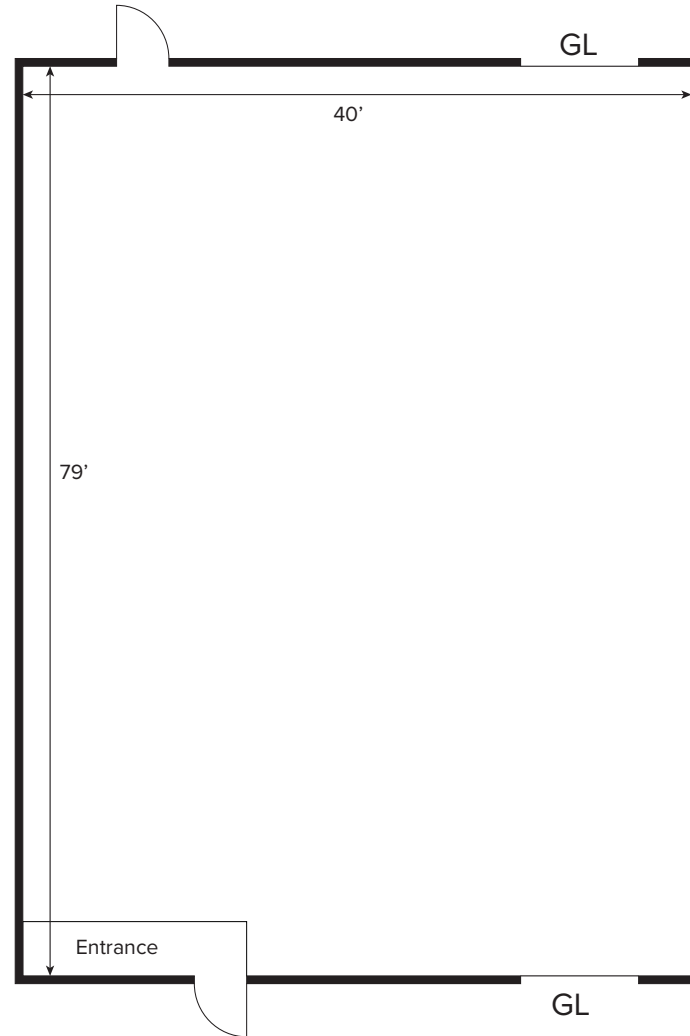
* Floorplans not to scale



FLOOR PLANS

4960 Allison Parkway STE E & H - ±3,200 SF

- 100% warehouse
- Two (2) 12'x14' Grade Level Doors
- 20' Clear Height



Suite E & H- Floorplan

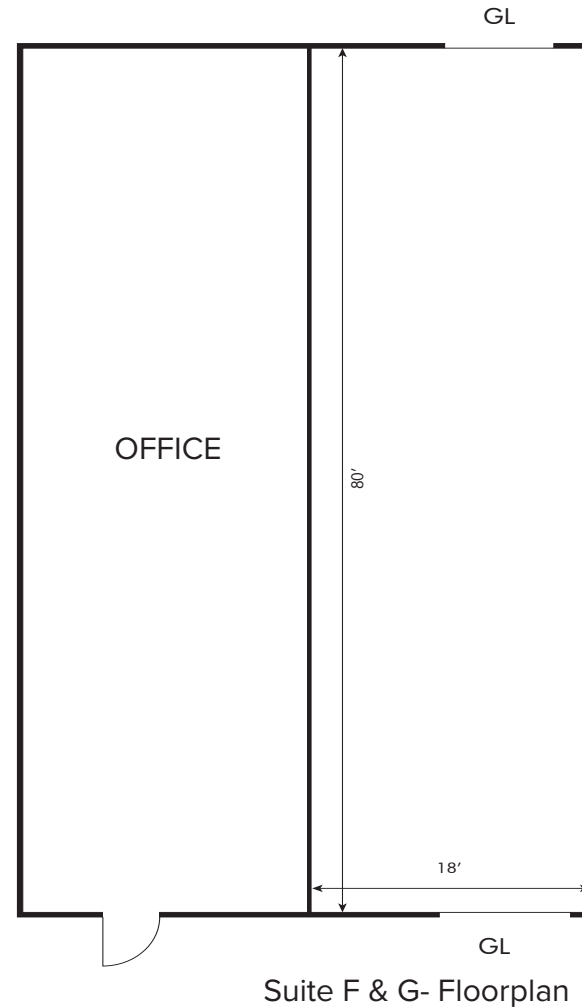
* Floorplans not to scale



FLOOR PLANS

4960 Allison Parkway STE F & G - ±3,200 SF

- 50% office / 50% warehouse
- Functional new office space
- Two (2) 12'x14' Grade Level Doors
- One (1) Restroom with Shower
- 20' Clear Height

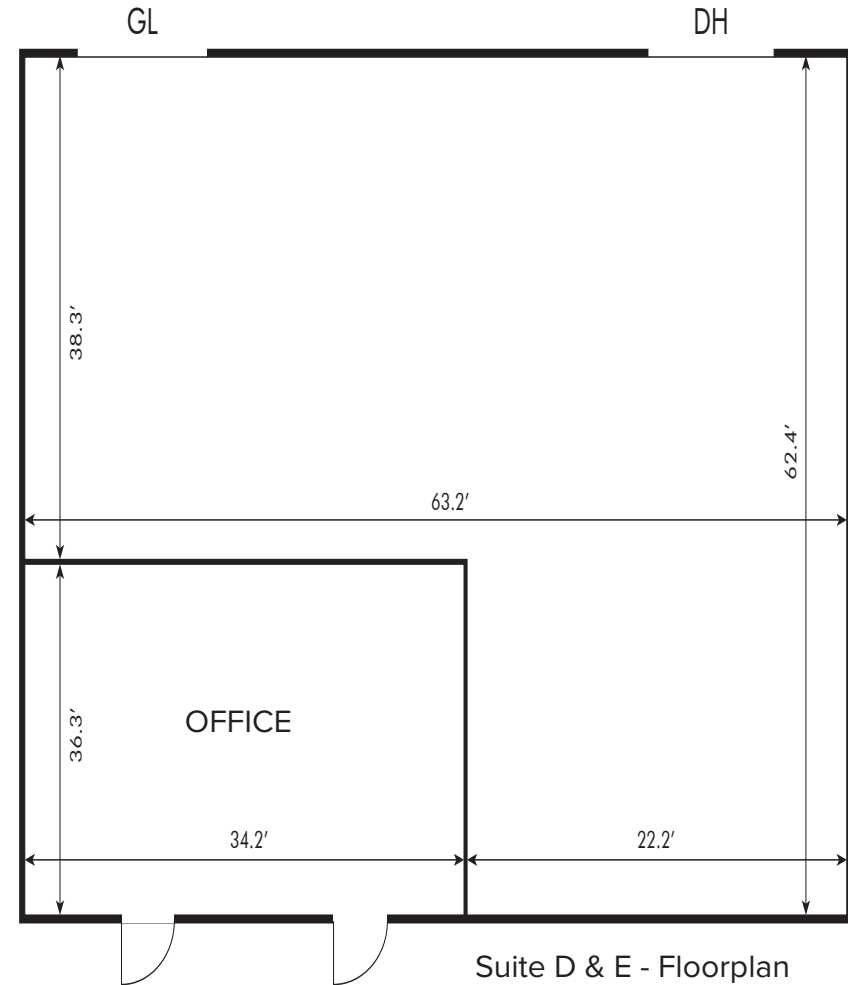


* Floorplans not to scale

FLOOR PLANS

4970 Allison Parkway STE D & E - ±4,560 SF

- High end office space
- One (1) Private office
- Conference room
- Bullpen areas
- One (1) restroom
- One (1) Dock High loading position
- One (1) Grade Level loading door
- 20' Clear Height



* Floorplans not to scale

AVAILABILITIES

4970 ALLISON PARKWAY ±19,200 SQ FT

SUITE F ±5,040 Sq Ft	SUITE D & E ±4,560 Sq Ft	SUITE C ±3,200 Sq Ft	SUITE B ±3,200 Sq Ft	SUITE A ±3,200 Sq Ft
-------------------------	-----------------------------	-------------------------	-------------------------	-------------------------

4960 ALLISON PARKWAY ±19,200 SQ FT

SUITE F & G ±3,200 Sq Ft	SUITE E & H ±3,200 Sq Ft	SUITE D & I ±3,200 Sq Ft	SUITE C & J ±3,200 Sq Ft	SUITE B & K ±3,200 Sq Ft	SUITE A & L ±3,200 Sq Ft
-----------------------------	-----------------------------	-----------------------------	-----------------------------	-----------------------------	-----------------------------

4950 ALLISON PARKWAY ±17,280 SQ FT

SUITE F ±2,880 Sq Ft	SUITE E ±2,880 Sq Ft	SUITE D ±2,880 Sq Ft	SUITE C ±2,880 Sq Ft	SUITE B ±2,880 Sq Ft	SUITE A ±2,880 Sq Ft
-------------------------	-------------------------	-------------------------	-------------------------	-------------------------	-------------------------



4960 Suite G



4970 Suite D & E



4950 Suite F



4950 Suite F

CONTACT

COURTNEY CURTIS

Vice President

707-628-7584

courtney.curtis@cbre.com

Lic. 02110227

CBRE



©2024 CBRE, Inc. All rights reserved. This information has been obtained from sources believed reliable but has not been verified for accuracy or completeness. You should conduct a careful, independent investigation of the property and verify all information. Any reliance on this information is solely at your own risk. CBRE and the CBRE logo are service marks of CBRE, Inc. All other marks displayed on this document are the property of their respective owners, and the use of such logos does not imply any affiliation with or endorsement of CBRE. Photos herein are the property of their respective owners. Use of these images without the express written consent of the owner is prohibited.