



CORPORATE SUITES



COWORKING



MEETING ROOMS



EVENT SPACE

# Flex@TIDE

Work Smart. Grow Sustainably. Thrive Together



# A hub for innovation and collaboration

Located in the heart of London Bankside, Flex @ Tide is more than just a workspace – it's where modern businesses connect, create, and grow. Our Net Zero Carbon building by Squire & Partners offers coworking, private offices, high-tech meeting rooms, and a dynamic event space, all designed for forward-thinking companies.

With a thriving community and exclusive networking events, Flex @ Tide is the perfect place to work, innovate, and collaborate.

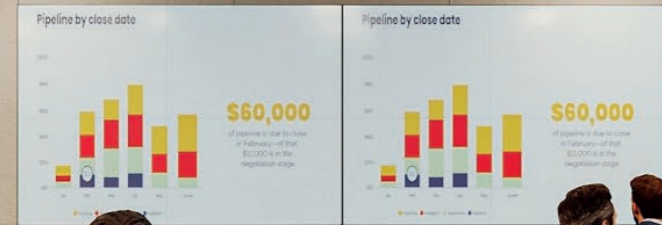
Our private offices blend sleek, modern design with customizable layouts, premium finishes, and ergonomic comfort – a workspace that inspires success.

# office spaces



# meeting rooms

Experience high-tech meeting rooms with sleek design, interactive displays, and seamless video conferencing – perfect for pitches, brainstorming, and boardroom talks.



# event spaces

Host product launches, networking events, or workshops in style – plus, enjoy our private bar downstairs or rent the rooftop for maximum impact.

Join a thriving community at Flex @ Tide, where collaborative workspaces bring together entrepreneurs, freelancers, and small teams. With modern design, comfortable seating, and essential amenities, it's the perfect place to connect, create, and grow.

# coworking



Tide Bankside is where innovation meets inspiration. Located in one of London's most dynamic neighborhoods, our space combines sleek, modern design with cutting-edge technology to create an environment that fuels productivity and creativity.

From flexible office solutions and collaborative coworking areas to high-tech meeting rooms and a versatile event space, Tide caters to the diverse needs of forward-thinking businesses. Our Net Zero Carbon building, designed by Squire & Partners, ensures sustainability is at the core of everything we do, making Tide the smart choice for companies that care about the future.

But Tide is more than just a workplace – it's a community. With regular networking events, access to like-minded professionals, and the buzz of Bankside right on your doorstep, you'll be inspired every day. Whether you're a startup, a creative agency, or an established business, Tide Bankside offers the perfect mix of functionality, innovation, and energy to help you thrive in.

# why choose tide

# spaces to work and connect



Concierge service with mail handling



Membership lounge



Kitchens with complimentary hot and cold drinks, fresh fruit and snacks



High-speed internet



Boardrooms and meeting rooms with the latest AV technology



Luxury breakout spaces



Digital access control with app



Bike parking



Phone booths



Shower and changing facilities with lockers



Access to event space – with discount



Complimentary business networking events

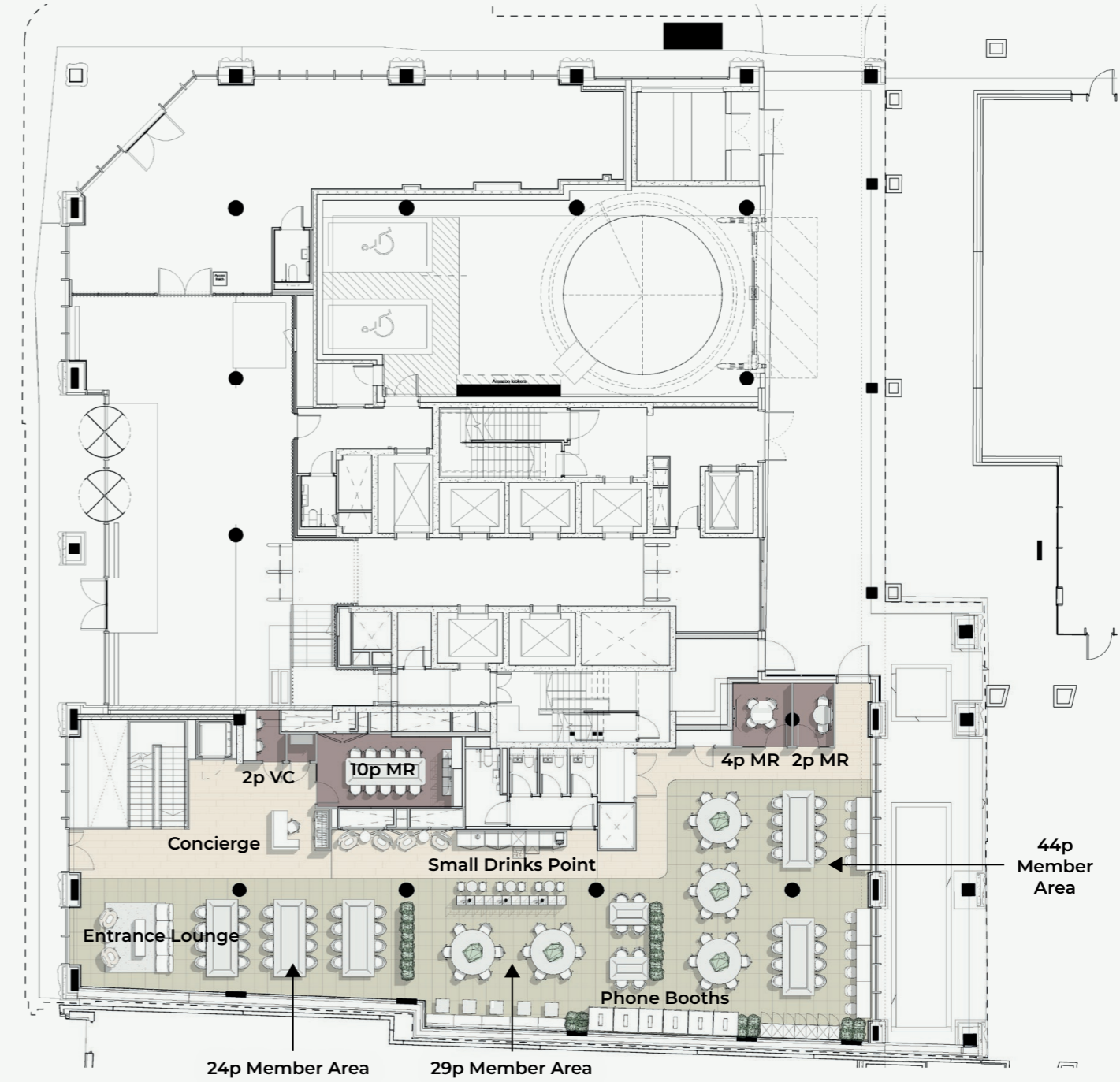


Roof terrace

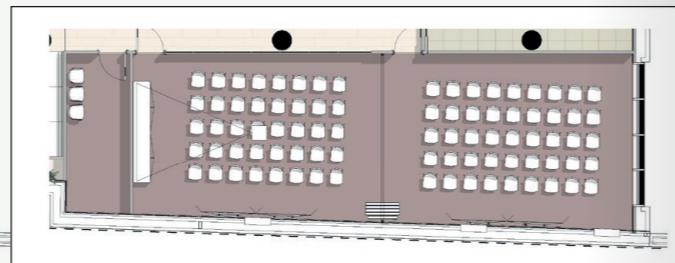
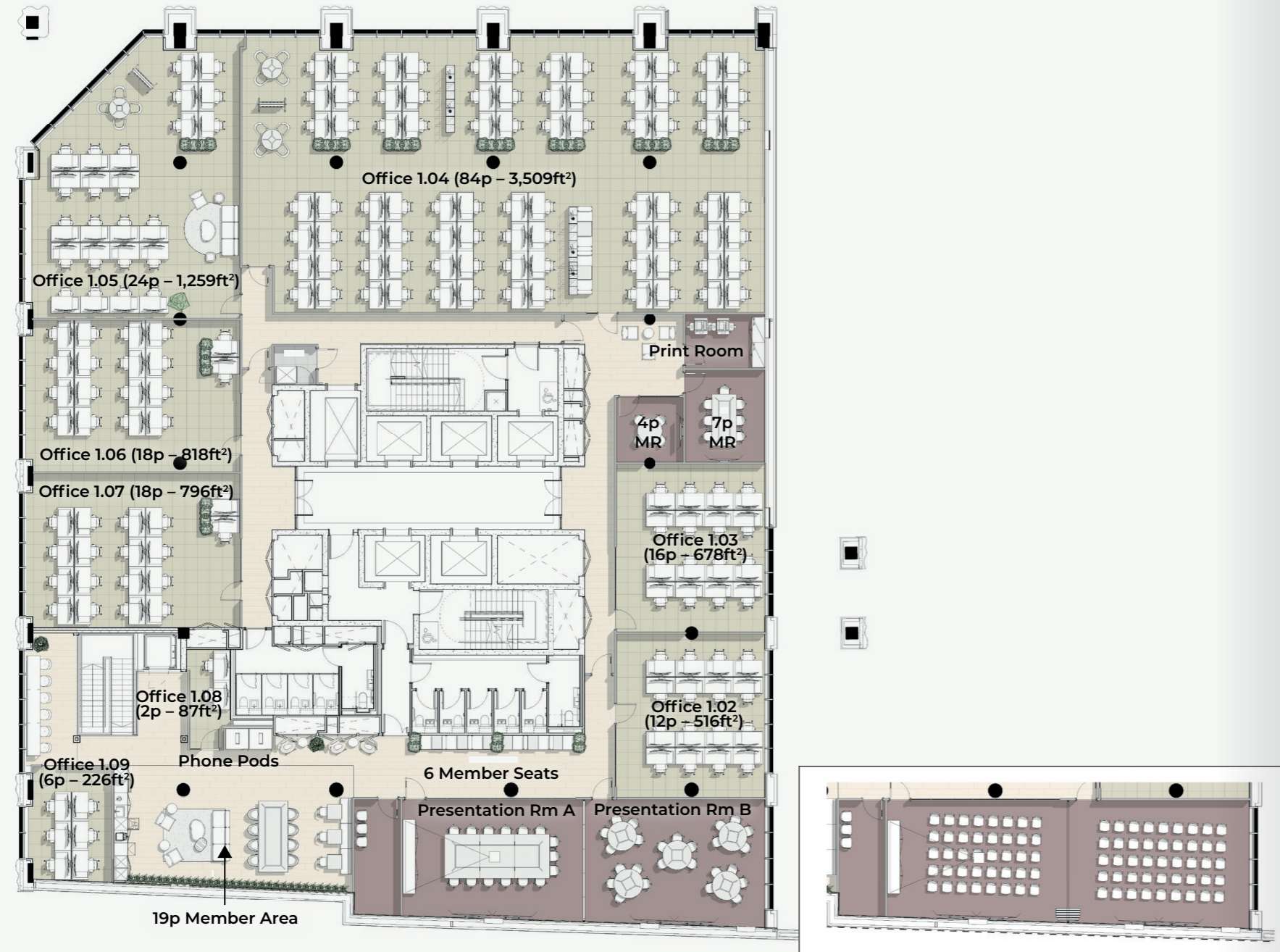
# basement



# ground floor



# Level 1



# Level 2

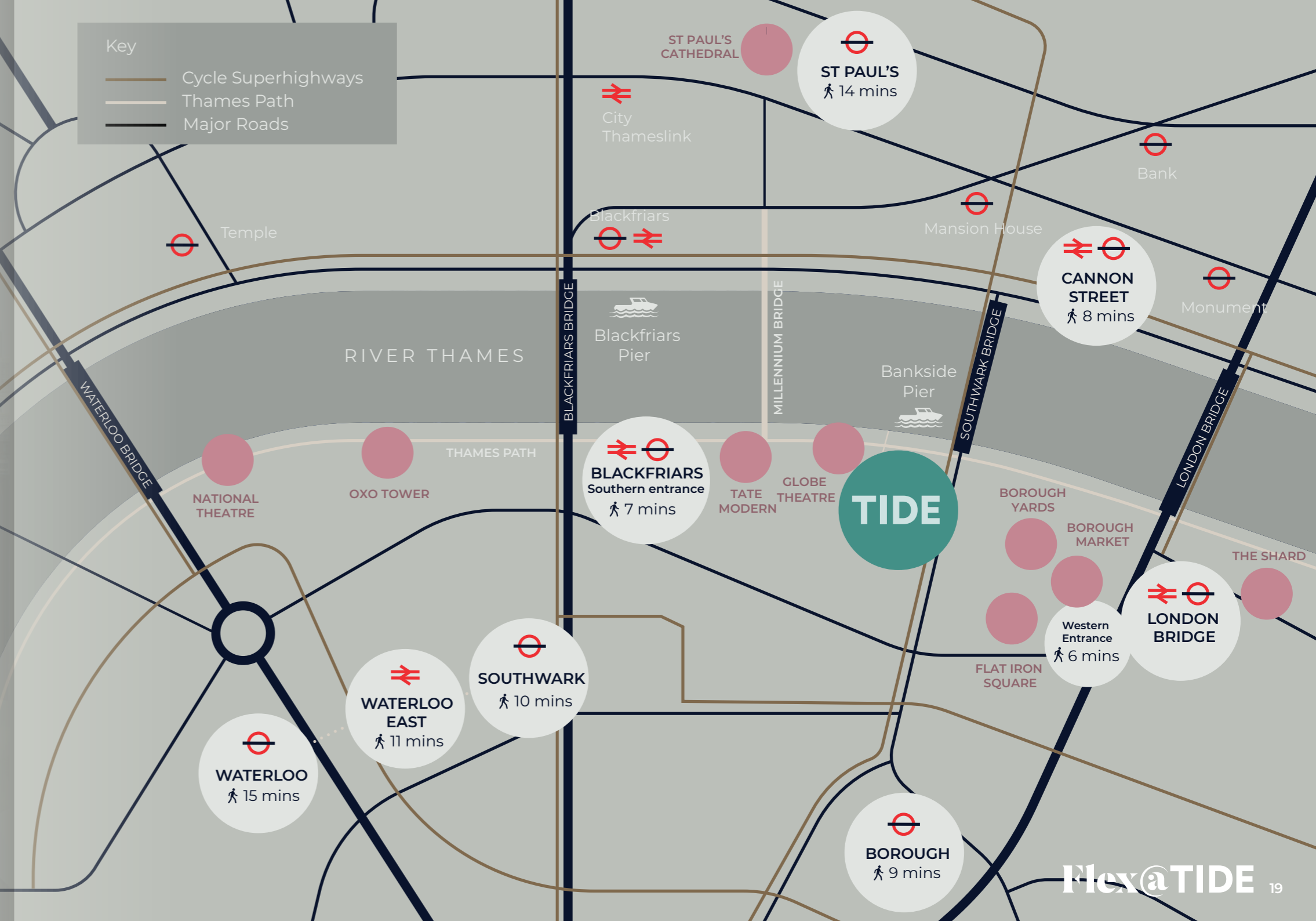




# location

Key



- Cycle Superhighways
- Thames Path
- Major Roads



# Get in touch today




## SALES

Nicola Taylor-Wells

 07977 095758  
 nicolataylor-wells@newflex.com

---

## ONLINE

 [quadworkspace.co.uk/flex-at-tide](https://quadworkspace.co.uk/flex-at-tide)  
 @quadworkspace  
 @quadworkspace



## FIND US

Tide Bankside,  
8 Emerson St,  
London SE1 9DU

# Flex@TIDE