



b o x

blackbox office

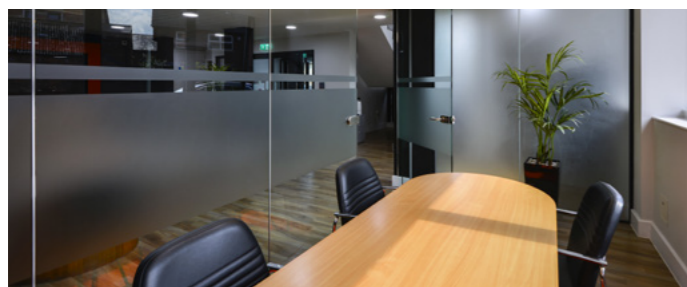
contemporary office space **to let** from 2 persons

# CONTEMPORARY OFFICE SPACE IN THE HEART OF WILMSLOW

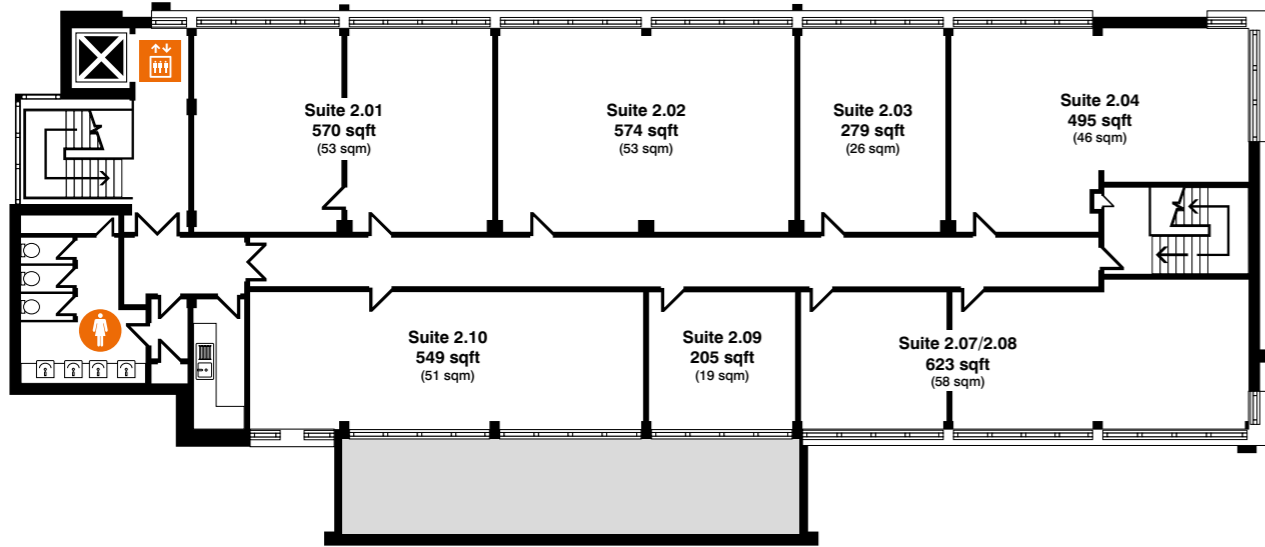
Blackbox is a 3 storey office building offering a contemporary working environment, the building is ideally located on Beech Lane in Wilmslow town centre; a thriving business and retail destination.

Blackbox provides high-quality, flexible office accommodation designed to meet the evolving requirements of modern businesses and the way they work today.

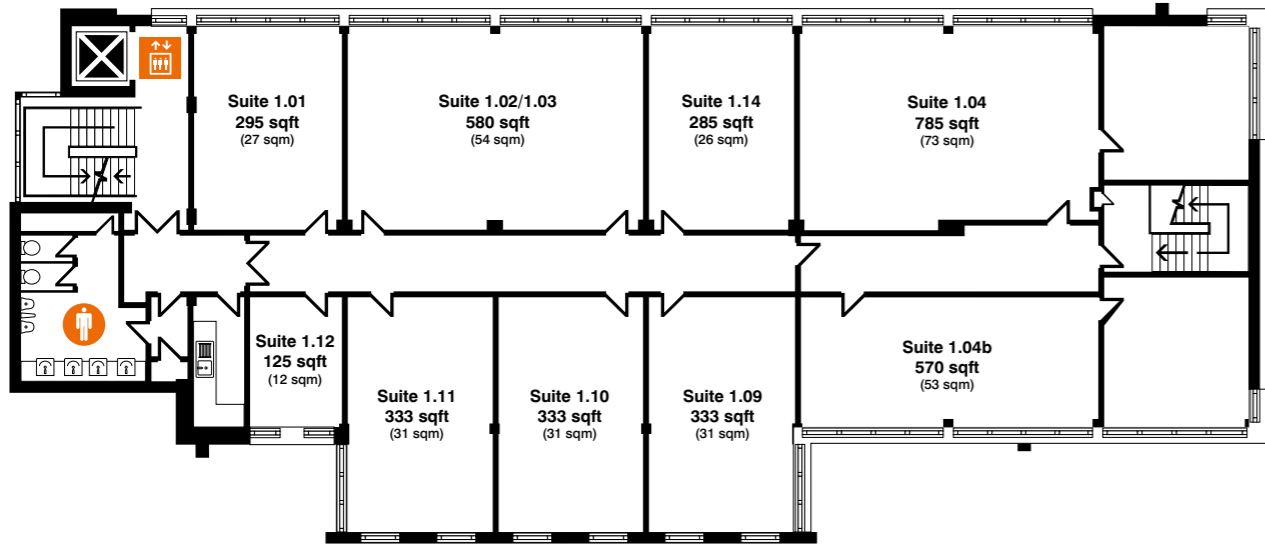
Wilmslow is an established commercial hub with a growing business and retail presence



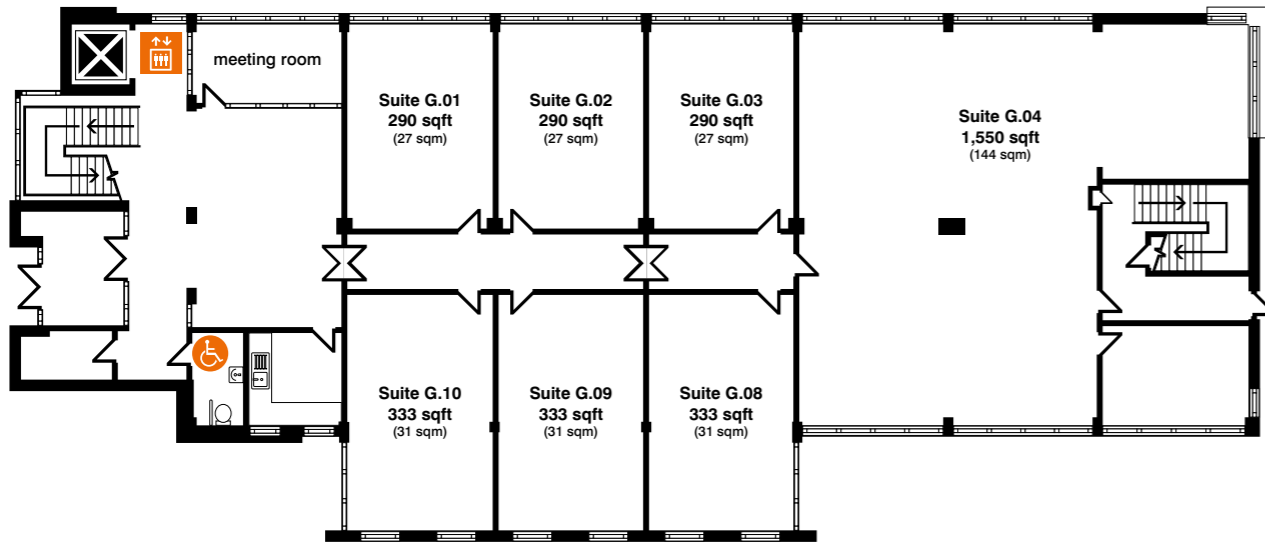
**Second Floor**



**First Floor**



**Ground Floor**



# FEATURES



KITCHEN FACILITIES



REFURBISHED



LED LIGHTING



24-HOUR ACCESS



SUSPENDED CEILINGS



BIKE STORAGE



BUILDING MANAGER



MEETING ROOM HIRE



MALE, FEMALE, & DISABLED WC'S



ON-SITE PARKING



PASSENGER LIFT



PERIMETER HEATING

**Tenure**

The office suites are available on either short term managed licences or longer term leases.



WILMSLOW STATION

LEISURE CENTRE

WILMSLOW HIGH SCHOOL

BROWNS

TROPICA

PICCOLINOS

WAITROSE

BARINDA

THE WINE CELLAR

SUBURBAN GREEN

POST OFFICE

TESCO EXPRESS

M&S FOOD

COSTA COFFEE

WATERSTONES

BOOTS

CIBO

JUST BETWEEN FRIENDS

STARBUCKS

REX CINEMA

WILMSLOW LIBRARY

AURA

PLANT BLENDS

HOOPERS

WATER LANE CAFÉ

PIZZA EXPRESS

SPACE NK

LITTLE GREENE

STOLEN LAMB

SAINSBURY'S

JO MALONE LONDON

JUNIPER

SMOKE

JERK JUNCTION

WOOD FIRE SMOKE

GAIL'S BAKERY

SPRINGFIELD CAR PARK

HOTEL CHOCOLAT

COOK

BLACKBOX - 3 MINUTE WALK



blackbox office

SatNav: SK9 5ER

**Orbit**  
Developments

**01625 588200**

[www.orbit-developments.co.uk](http://www.orbit-developments.co.uk)

DISCLAIMER: These Particulars are believed to be correct at time of going to Press, but the Developer reserves the right to change the scheme in the future. However, the Vendors/Lessors and Agents of this property give notice that: (1) These Particulars are intended as a general outline only, for the guidance of prospective purchasers or tenants, and do not constitute the whole or any part of an offer or contract. (2) They cannot guarantee the accuracy of any description, dimension or other details contained in these Particulars and prospective purchasers or tenants should not rely on them as statements of fact or representation, but must satisfy themselves as to the accuracy of such details. (3) No employee of the Agents has any authority to make or give any representation or warranty, or enter into any contract whatsoever in relation to the property. Orbit Investments (Properties) Limited Co. No. 2274745. Registered in England and Wales with registered offices at Emerson House Heyes Lane Alderley Edge Cheshire SK9 7LF. (1225)