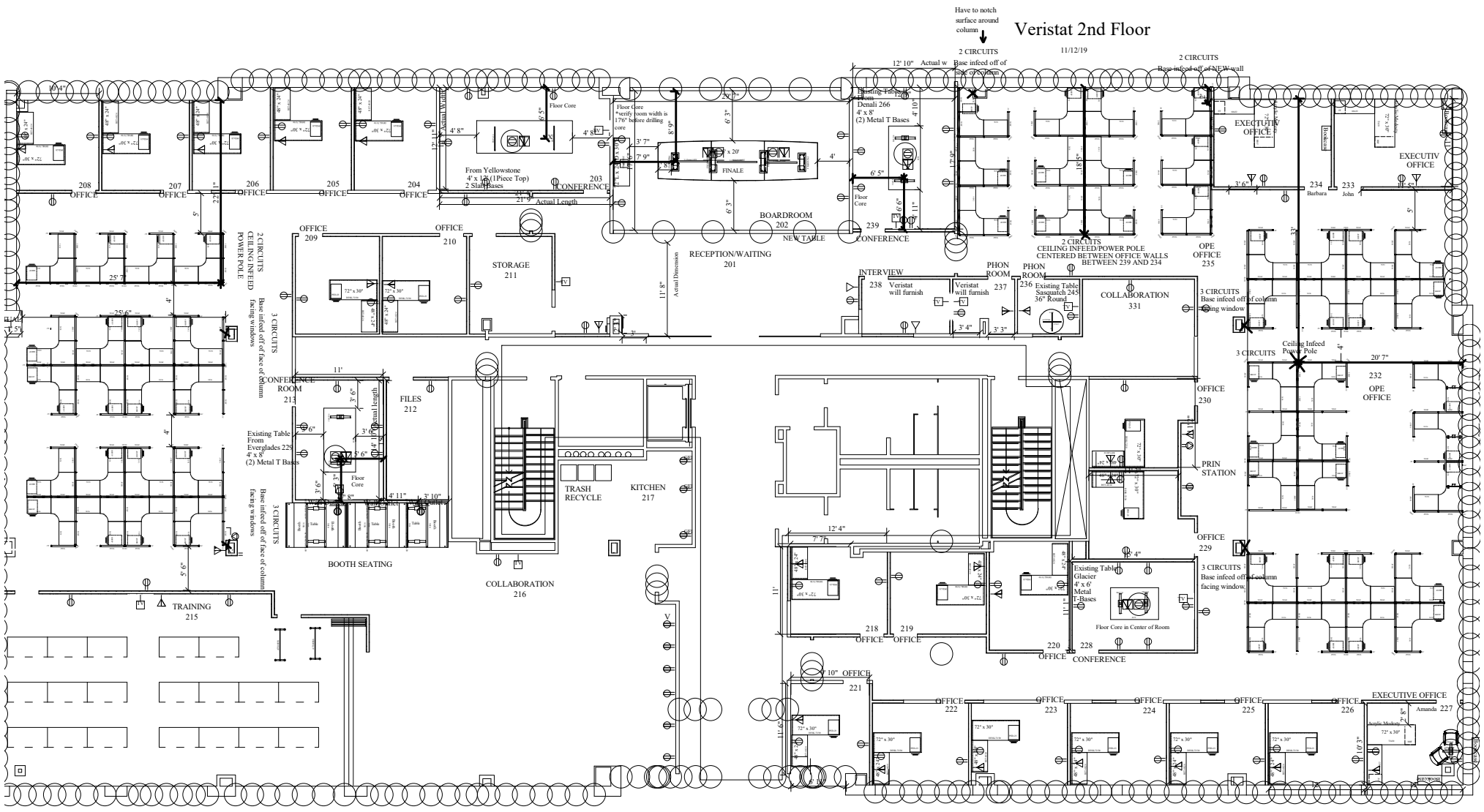


# Veristat 2nd Floor

11/12/19



Have to notch surface around column  
 ↓  
 2 CIRCUITS  
 Base infed off of face of column

2 CIRCUITS  
 Base infed off of FACE of wall

2 CIRCUITS  
 CEILING INFED POWER POLE  
 CENTERED BETWEEN OFFICE WALLS  
 BETWEEN 239 AND 234

2 CIRCUITS  
 CEILING INFED POWER POLE  
 BASE INFED OFF OF FACE OF COLUMN  
 Facing windows

3 CIRCUITS  
 Existing Table From Everglades 225  
 4' x 6'  
 Metal T Bases  
 Base infed off of face of column  
 Facing windows

3 CIRCUITS  
 Base infed off of column  
 Facing window

3 CIRCUITS  
 Ceiling Infed Power Pole

3 CIRCUITS  
 Base infed off of column  
 Facing window

Existing Table  
 Glacier  
 4' x 6'  
 Metal T-Bases  
 Floor Core in Center of Room



Extra info here (look from 223) Replicast with Annand's original desk 30 x 72 Right Return