



Office Sublease Dominion Bank Building

SUBLEASE DETAILS

TOTAL AREA	±5,413 SF
SECOND FLOOR	Subleased
THIRD FLOOR	±2,094 SF
SUBLEASE RATE	Market
2025 ADDITIONAL RENT	\$18.75 PSF
SUBLEASE TERM	June 30, 2031
OCCUPANCY	30-60 days

OPPORTUNITY OVERVIEW

- » Rare opportunity to sublease 5,413 SF of beautifully appointed office space in the iconic Dominion Bank Building.
- » Furniture available.
- » Positioned above Teatro Restaurant, and steps from Olympic Plaza, Arts Commons, Stephen Avenue.
- » Close proximity to LRT Access and the Core Shopping Centre.

For more information, **Loveleen Bhatti, Executive VP** please contact:

+1 403 973 4360
lbhatti@naiadvent.com

Roseleen Bhatti, Executive VP

+1 403 605 2294
rbhatti@naiadvent.com

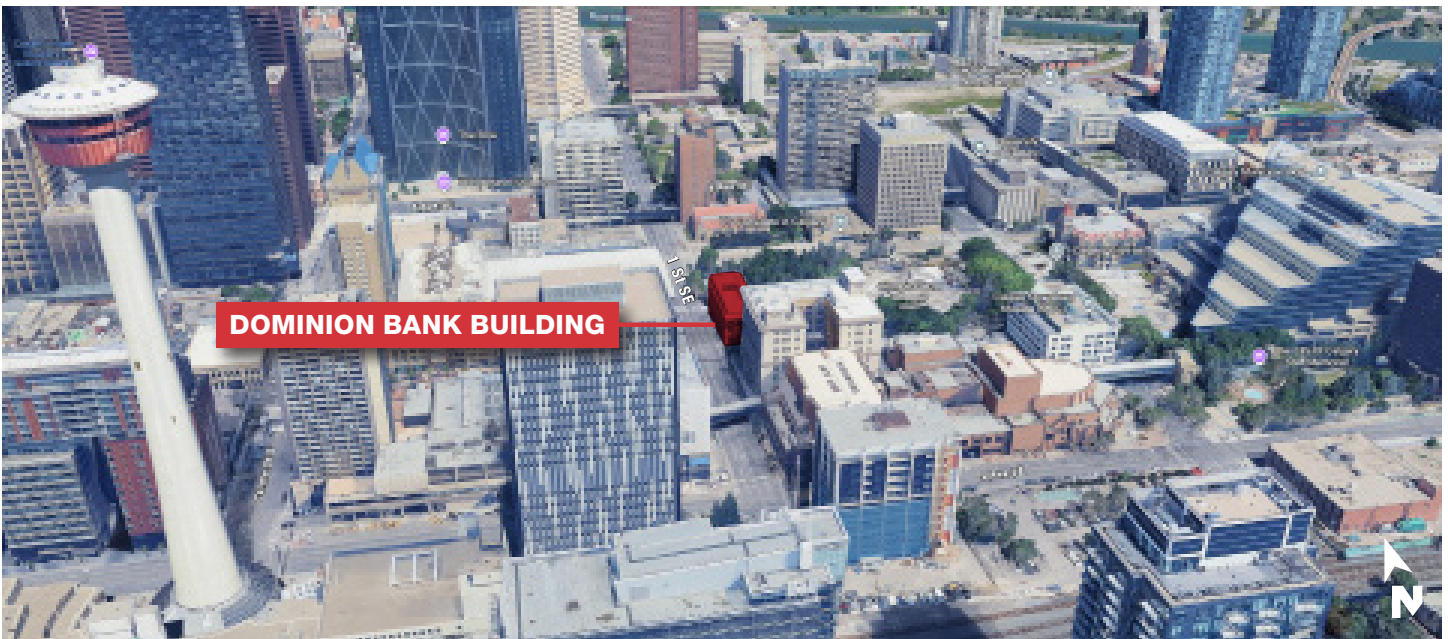
Sobey Salem, Brokerage Services

+1 403 862 8615
ssalem@naiadvent.com

PROPERTY LOCATION



PROPERTY MAP VIEW



For more information, **Loveleen Bhatti, Executive VP** please contact:

+1 403 973 4360
lbhatti@naiadvent.com

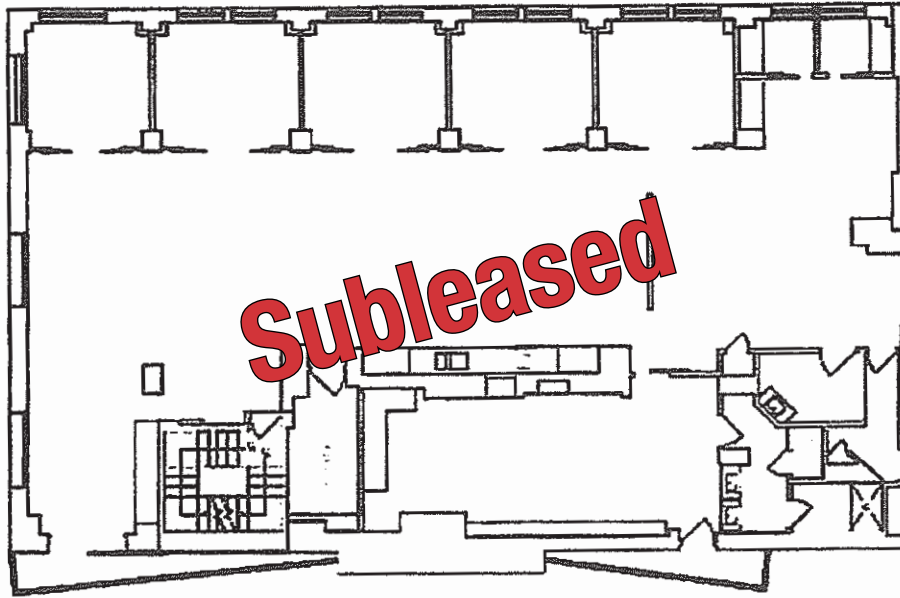
Roseleen Bhatti, Executive VP

+1 403 605 2294
rbhatti@naiadvent.com

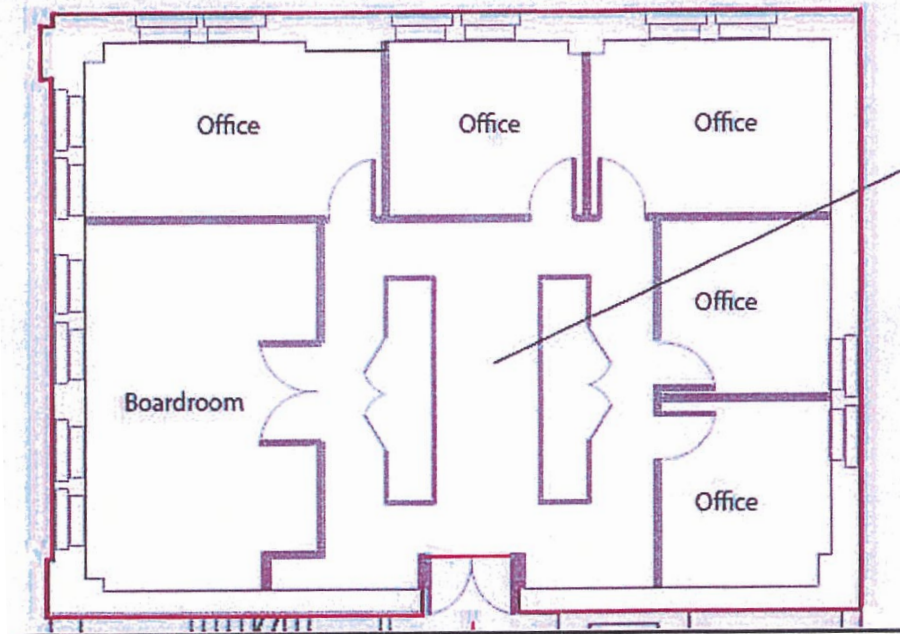
Sobey Salem, Brokerage Services

+1 403 862 8615
ssalem@naiadvent.com

SECOND FLOOR PLAN



THIRD FLOOR PLAN



For more information, please contact:

Loveleen Bhatti, Executive VP +1 403 973 4360 lbhatti@naiadvent.com	Roseleen Bhatti, Executive VP +1 403 605 2294 rbhatti@naiadvent.com	Sobey Salem, Brokerage Services +1 403 862 8615 ssalem@naiadvent.com
---	---	---



THIS BROCHURE IS INTENDED FOR INFORMATION PURPOSES ONLY AND SHOULD NOT BE RELIED UPON FOR ACCURATE FACTUAL INFORMATION BY THE RECIPIENTS HEREOF. THE INFORMATION CONTAINED HEREIN IS BASED ON INFORMATION WHICH NAI ADVENT DEEMS RELIABLE, HOWEVER, NAI ADVENT ASSUMES NO RESPONSIBILITY FOR THE DEGREE OF ACCURACY OF SUCH INFORMATION, NOR DOES NAI ADVENT REPRESENT OR WARRANT THE INFORMATION CONTAINED HEREIN. RECIPIENTS HEREOF SHOULD CONDUCT THEIR OWN INVESTIGATIONS TO DETERMINE THE ACCURACY OF INFORMATION CONTAINED HEREIN. THE INFORMATION CONTAINED HEREIN IS SUBJECT TO CHANGE WITHOUT NOTICE.

For more information, **Loveleen Bhatti, Executive VP** please contact:

+1 403 973 4360
lbhatti@naiadvent.com

Roseleen Bhatti, Executive VP

+1 403 605 2294
rbhatti@naiadvent.com

Sobey Salem, Brokerage Services

+1 403 862 8615
ssalem@naiadvent.com