

# NCC

NATOMAS COMMERCE CENTER



**OFFICE, INDUSTRIAL & FLEX SPACE**





# NCC

NATOMAS COMMERCE CENTER

## OFFICE, INDUSTRIAL & FLEX SPACE

Tommy Ponder, SIOR  
Executive Vice President  
License #01431506  
+1 916 563 3005  
tommy.ponder@colliers.com

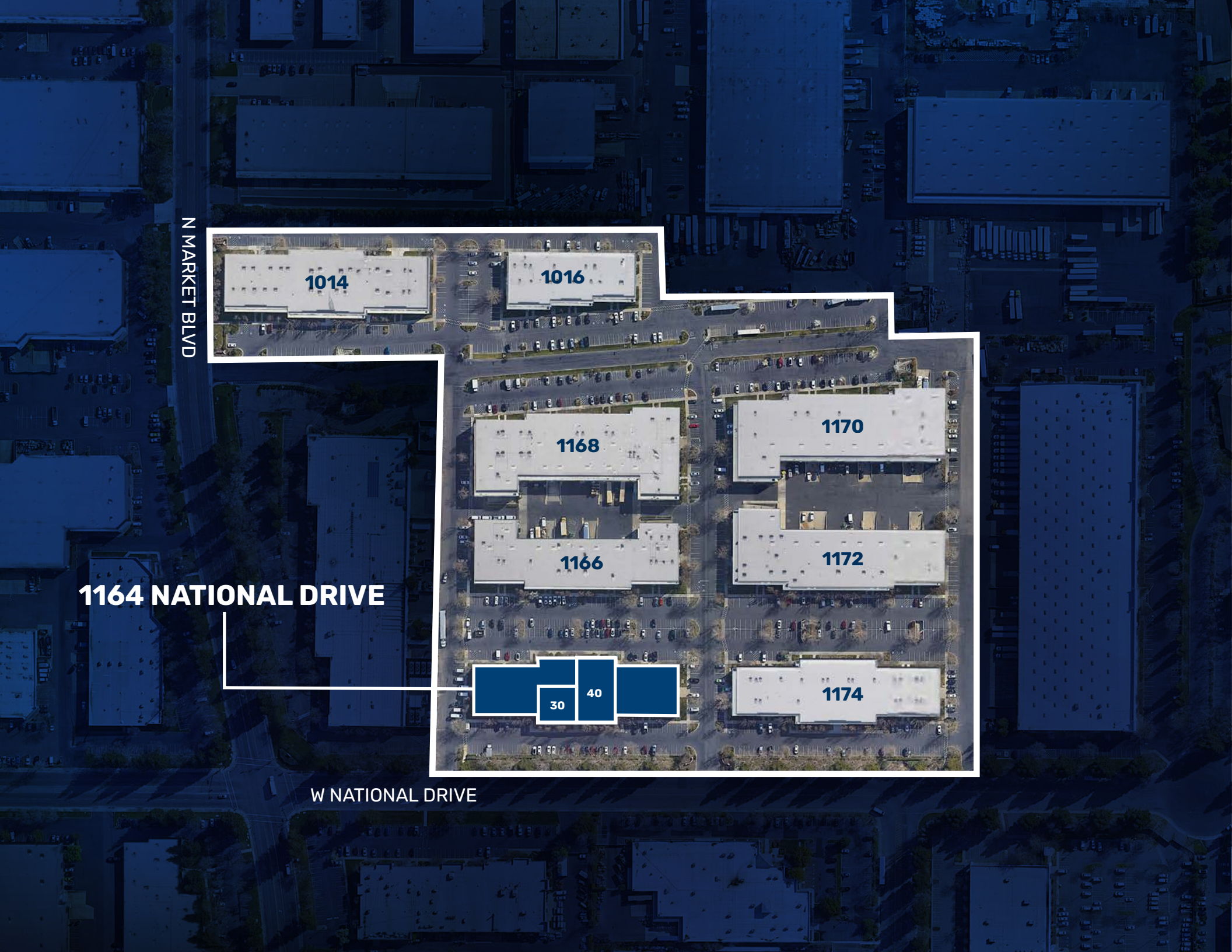
George Vrame, SIOR  
Senior Vice President  
License #02028936  
+1 916 563 3041  
george.vrame@colliers.com

Emily Breece  
Associate  
License #02147323  
+1 916 563 3091  
emily.breece@colliers.com

## PROPERTY OVERVIEW

[View Interior Photos](#)

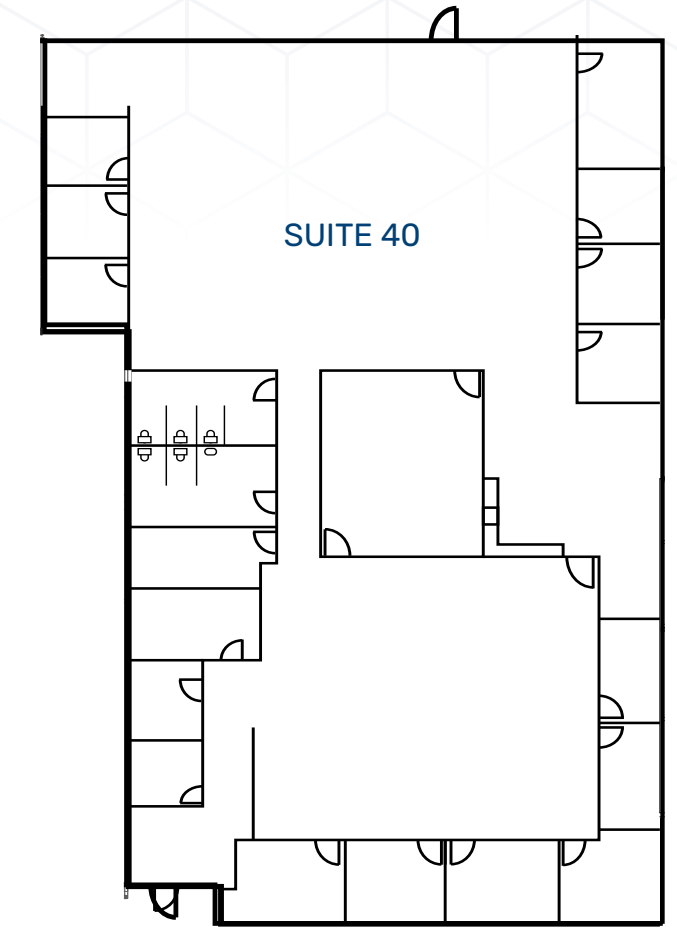
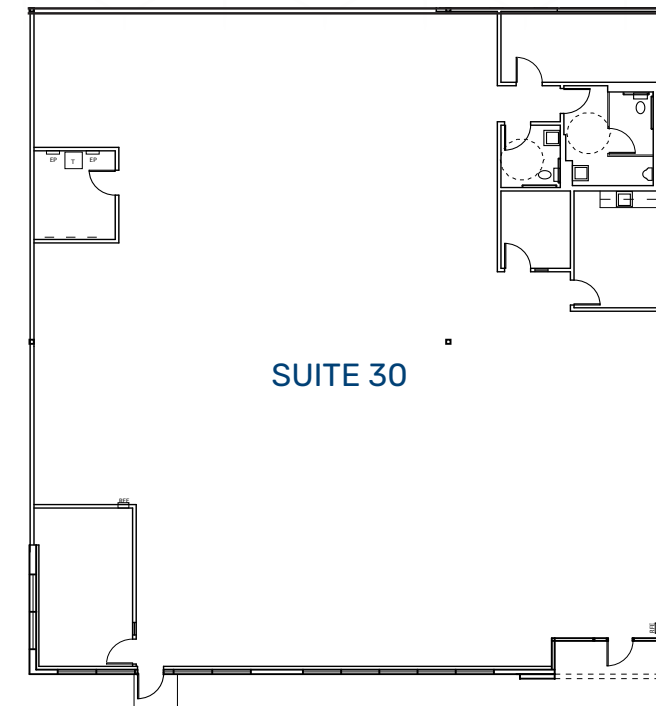
<b>PARK SIZE</b>	8 BUILDINGS   ±324,490 SF
<b>MINIMUM SUITE SIZE</b>	±1,520 SF
<b>CLEAR HEIGHT</b>	20' - 24'
<b>SPRINKLER DENSITY</b>	ESFR
<b>ZONING</b>	MP (INDUSTRIAL - OFFICE PARK)
<b>YEAR BUILT</b>	2006-2007
<b>POWER</b>	480V & 208V, 3 PHASE   200 AMPS MINIMUM PER SUITE
<b>INTERNET/DATA PROVIDER</b>	AT&T (COMCAST AVAILABLE IN SELECT BUILDINGS)
<b>POWER PROVIDER</b>	SMUD
<b>DOCK DOORS</b>	YES
<b>GRADE LEVEL DOORS</b>	YES



# 1164 NATIONAL DRIVE

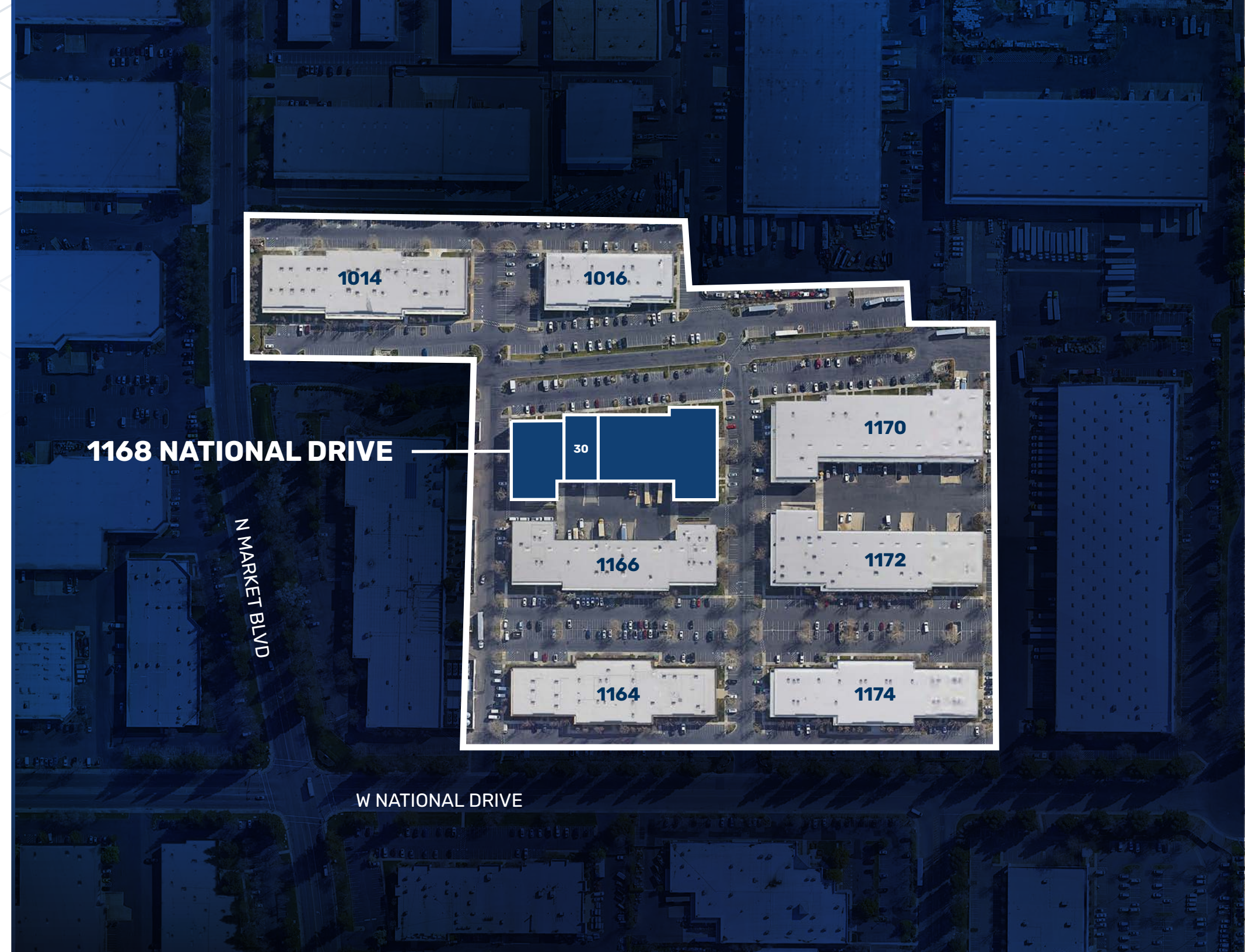
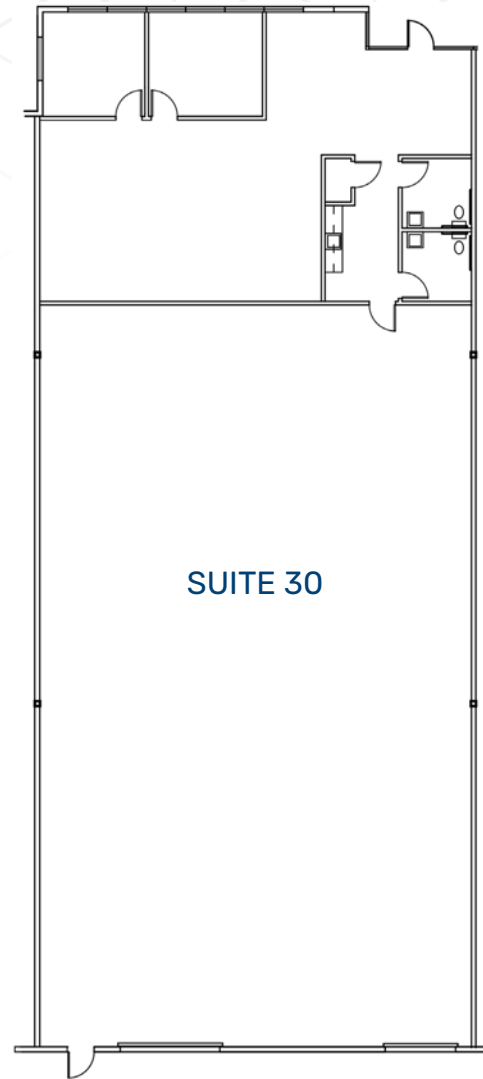
SUITE 30 | ±5,784 TOTAL SF | ±5,784 SF OFFICE

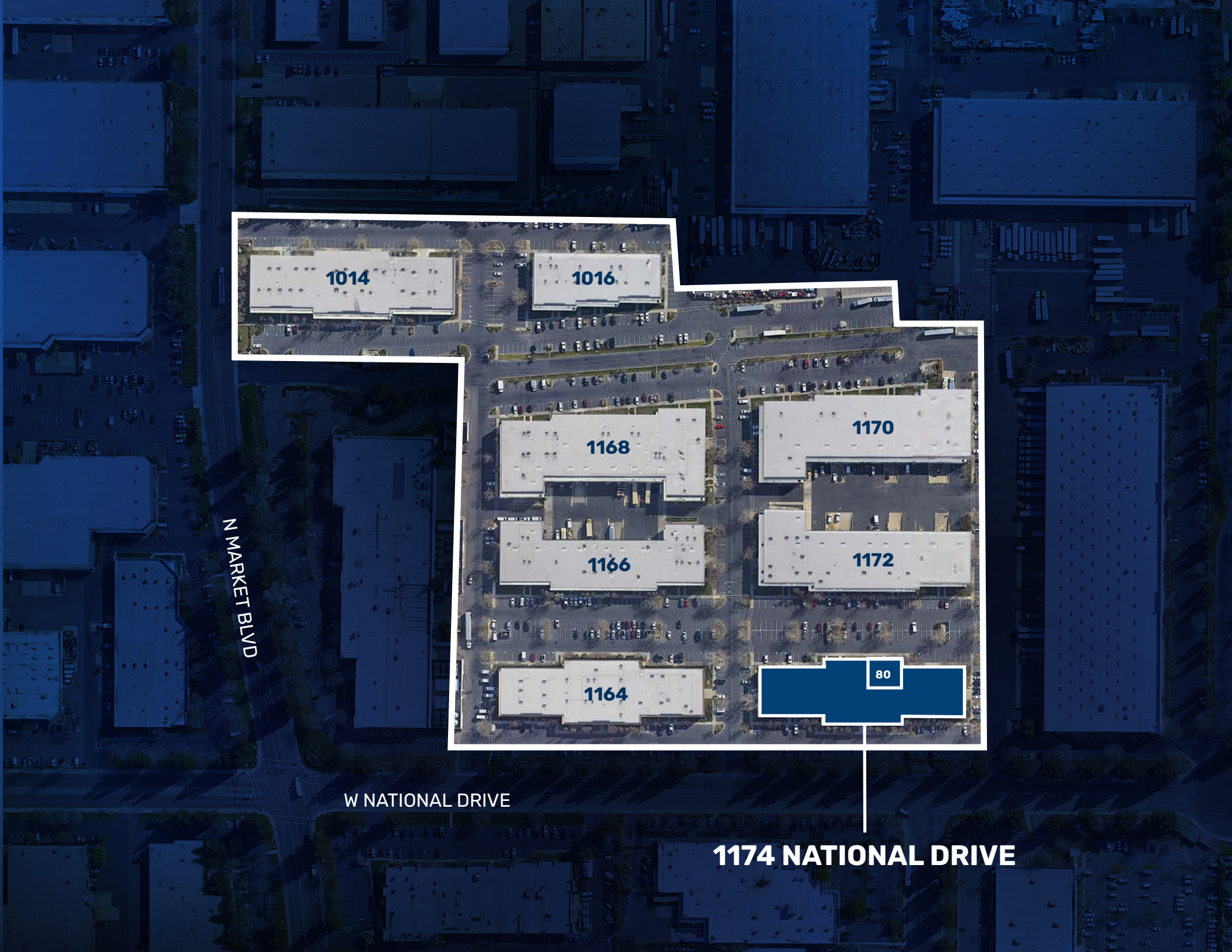
SUITE 40 | ±9,114 TOTAL SF | ±9,114 SF OFFICE



# 1168 NATIONAL DRIVE

SUITE 30 | ±6,063 TOTAL SF | ± 1,763 SF OFFICE





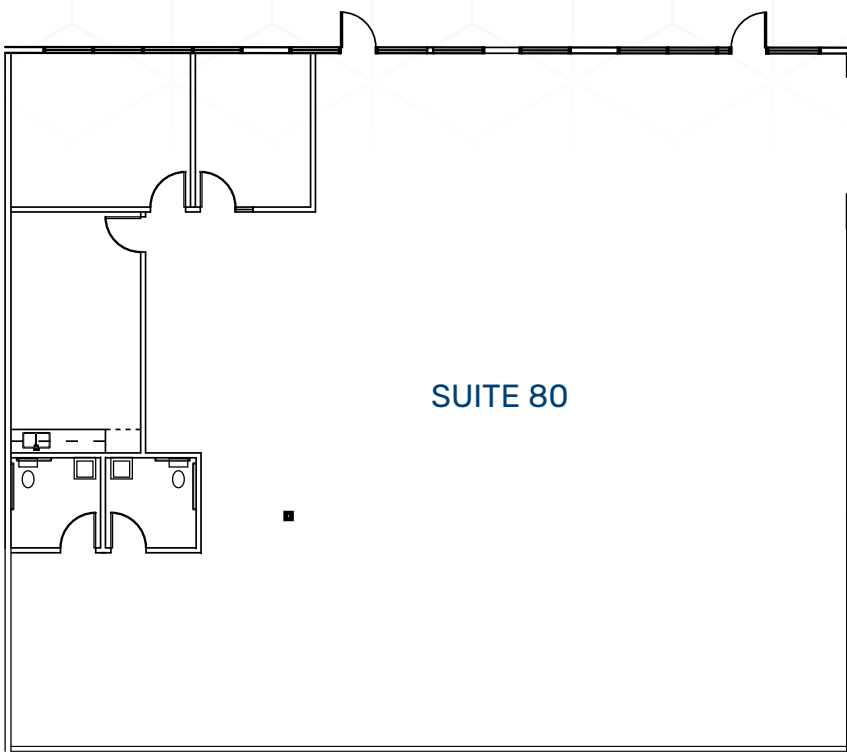
N MARKET BLVD

W NATIONAL DRIVE

1174 NATIONAL DRIVE

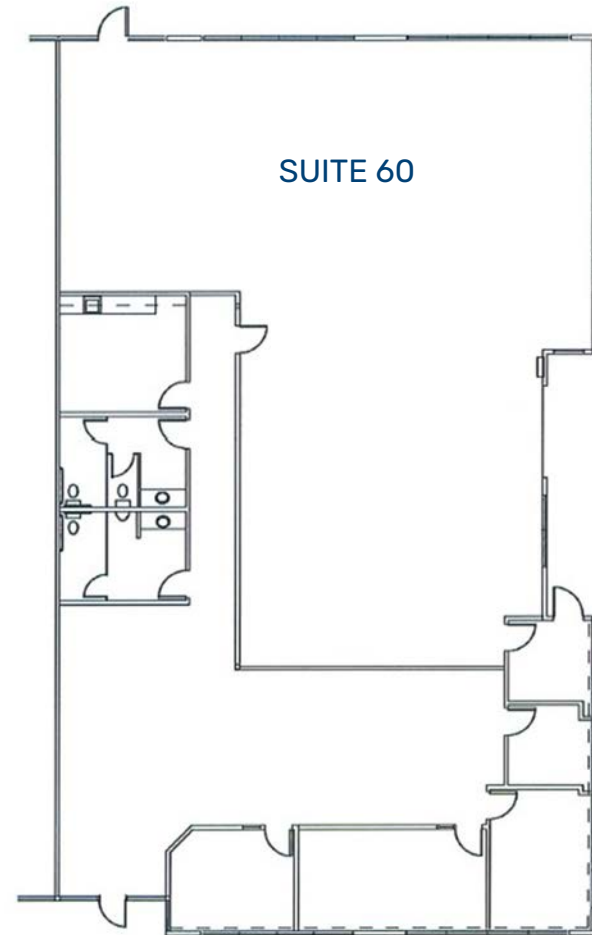
# 1174 NATIONAL DRIVE

SUITE 80 | ±4,329 TOTAL SF | ±4,329 SF OFFICE



# 1014 N MARKET BLVD

SUITE 60 | ±3,518 TOTAL SF | ±2,519 SF OFFICE



# NEARBY AMENITIES

## 1 NATOMAS MARKETPLACE

- |                              |                           |
|------------------------------|---------------------------|
| 1. REGAL NATOMAS MARKETPLACE | 9. FAMOUS FOOTWEAR        |
| 2. KOSHI RAMEN BAR           | 10. HOMEGOODS             |
| 3. APPLEBEE'S                | 11. IN-N-OUT              |
| 4. THE HOME DEPOT            | 12. STARBUCKS             |
| 5. PETSMART                  | 13. ROSS DRESS FOR LESS   |
| 6. STAPLES                   | 14. SHELL                 |
| 7. BATH & BODY WORKS         | 15. RUBIO'S COASTAL GRILL |
| 8. WALMART                   |                           |

## 2 NORTH NATOMAS PLACE

- |  |                            |
|--|----------------------------|
| 1. CALIFORNIA FAMILY FITNESS - NATOMAS | 3. STARBUCKS               |
| 2. BAD BAKERS NATOMAS                  | 4. OSHMIA SUSHI SPORTS BAR |

## 3

- |                                     |                        |
|-------------------------------------|------------------------|
| 1. FEDEX OFFICE PRINT & SHIP CENTER | 4. CHILI'S GRILL & BAR |
| 2. FIREHOUSE SUBS                   | 5. TEA 18              |
| 3. CHASE BANK                       | 6. POKE FIX            |

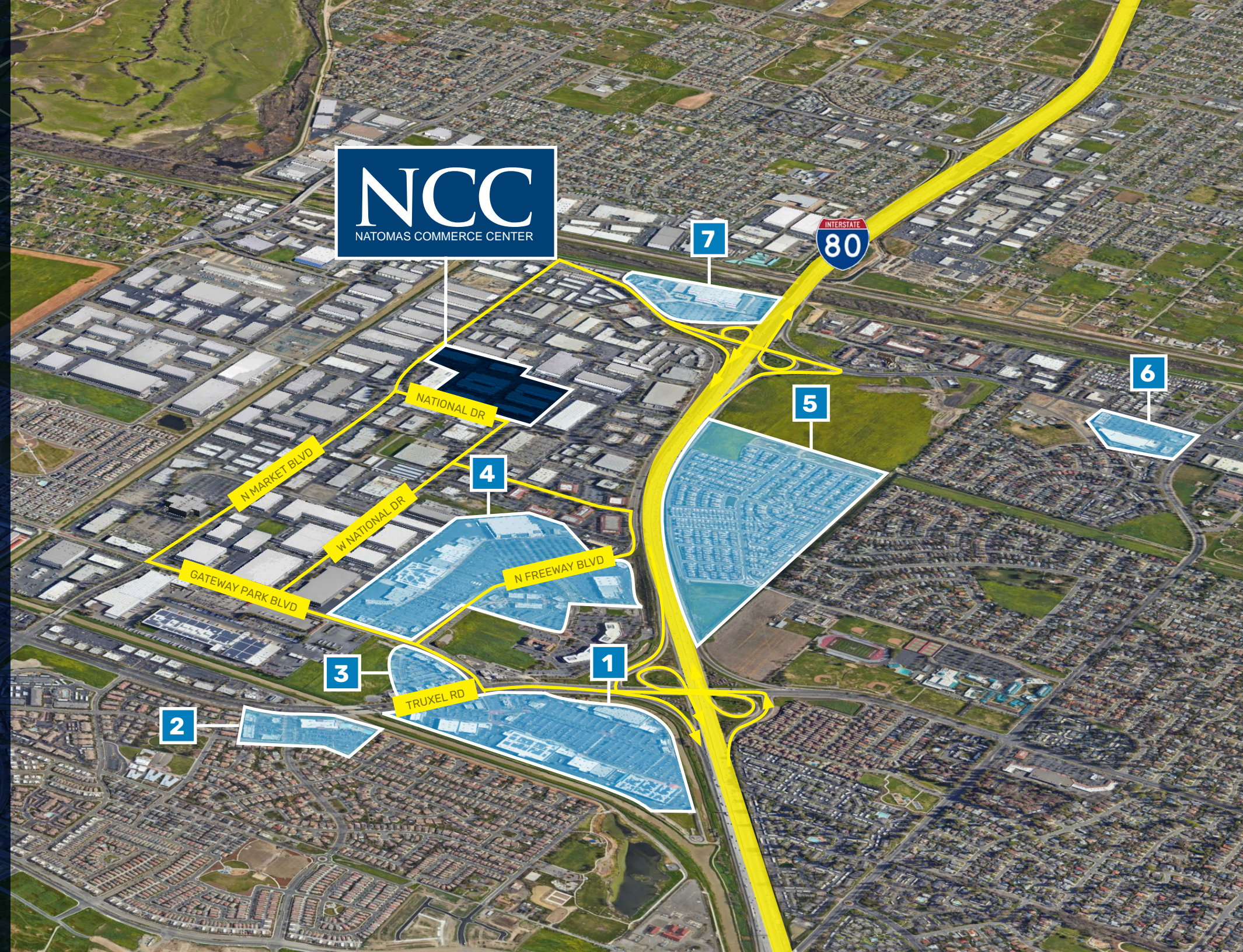
## 4 THE PROMENADE

- |                                |                                 |
|--------------------------------|---------------------------------|
| 1. TARGET                      | 9. T.J. MAXX                    |
| 2. OLD NAVY                    | 10. OFF BROADWAY SHOE WAREHOUSE |
| 3. ULTA BEAUTY                 | 11. ASHLEY STORE                |
| 4. DAISO                       | 12. BEST BUY                    |
| 5. WINGSTOP                    | 13. BOOT BARN                   |
| 6. OLIVE GARDEN                | 14. BEVMO                       |
| 7. BJ'S RESTAURANT & BREWHOUSE | 15. BUFFALO WILD WINGS          |
| 8. PANERA BREAD                |                                 |

## 5 PARKBRIDGE RESIDENTIAL

- ### 6
- |                |           |
|----------------|-----------|
| 1. FOODS       | 3. SUBWAY |
| 2. DOLLAR TREE | 4. ARCO   |

- ### 7
- |                      |                       |
|----------------------|-----------------------|
| 1. DUTCH BROS COFFEE | 3. CILANTRO'S MEXICAN |
| 2. WENDY'S           | 4. WESTERN UNION      |



# NCC

## NATOMAS COMMERCE CENTER



Tommy Ponder, SIOR  
Executive Vice President  
License #01431506  
+1 916 563 3005  
tommy.ponder@colliers.com

George Vrame, SIOR  
Senior Vice President  
License #02028936  
+1 916 563 3041  
george.vrame@colliers.com

Emily Breece  
Associate  
License #02147323  
+1 916 563 3091  
emily.breece@colliers.com