



Office | For Lease

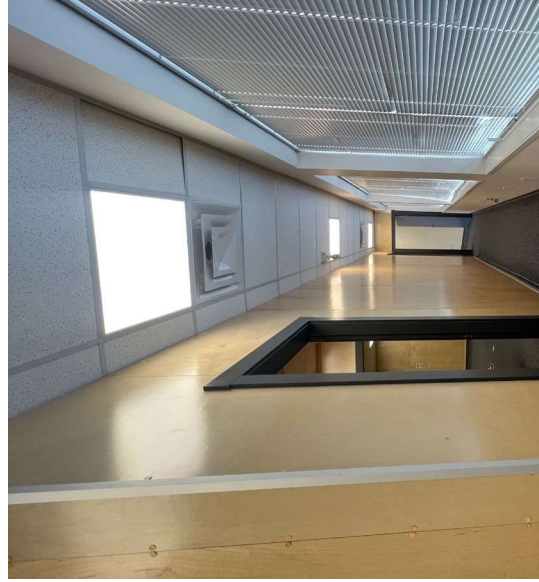
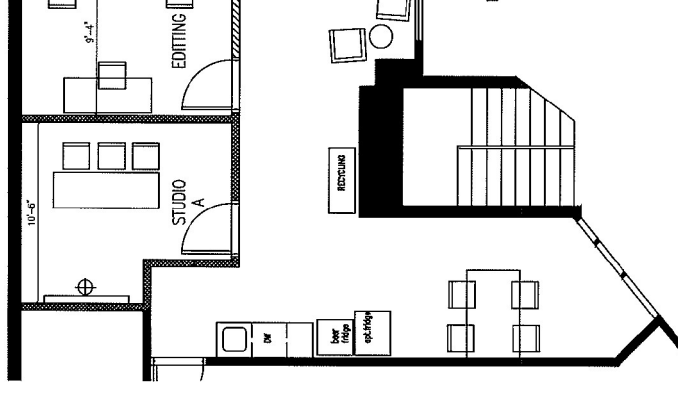
Quadra Plaza

Unit 203 - 1420 Quadra Street | Victoria, BC



Opportu

Unit 203 at 1420 Quadra Street is located in the Quadra Plaza. This walk-up 2nd floor unit is ideal for a variety of reception/seating area. Rare opportunity for all tenants and clients. The plaza features many opportunities. The plaza features many opportunities for businesses seeking a new opportunity.



Property Details

Rentable Area	2,395 SF
Asking Net Rent	\$15.00 PSF
Additional Rent	\$13.00 PSF (est.)
Available	Immediately
Zoning	CBD-1: Central Business District-1 - Site Specific



Location

Quadra Plaza is strategically situated in the heart of Downtown Victoria, commanding a prominent position at the bustling intersection of Quadra Street and Pandora Avenue. This vibrant area is dotted with a plethora of retail spaces, providing a wide array of opportunities for business to thrive and cater to the local and visiting clientele. The constant flow of foot traffic in this high visibility location ensures a steady stream of potential customers, making it a strategic choice for any business.

Neighbourhood Tenants

- Subway
- London Drugs
- McDonald's
- Save-on-Foods
- Panago
- Tim Hortons
- Tacofino
- Boomtown
- Habit Coffee
- Zambr's

