

COLUMBIA MEDICAL CENTER

11055 LITTLE PATUXENT PARKWAY | COLUMBIA, MD



MATT O'CONNELL 301.614.8891 | matto@donohoe.com

DONOHOE

MEDICAL OFFICE SPACE FOR LEASE



- Newly renovated common areas (full atrium lobby + restrooms)
- 3-story medical building totaling 49,253 SF
- On-site specialties include: Surgery Center, MRI Center, Optician, and Pharmacy
- Free on-site surface parking
- Immediately adjacent to Howard County General Hospital, with easy access to Route 29, Route 32, and Interstate 95
- Minutes to downtown Columbia, shopping, and dining

AVAILABILITY

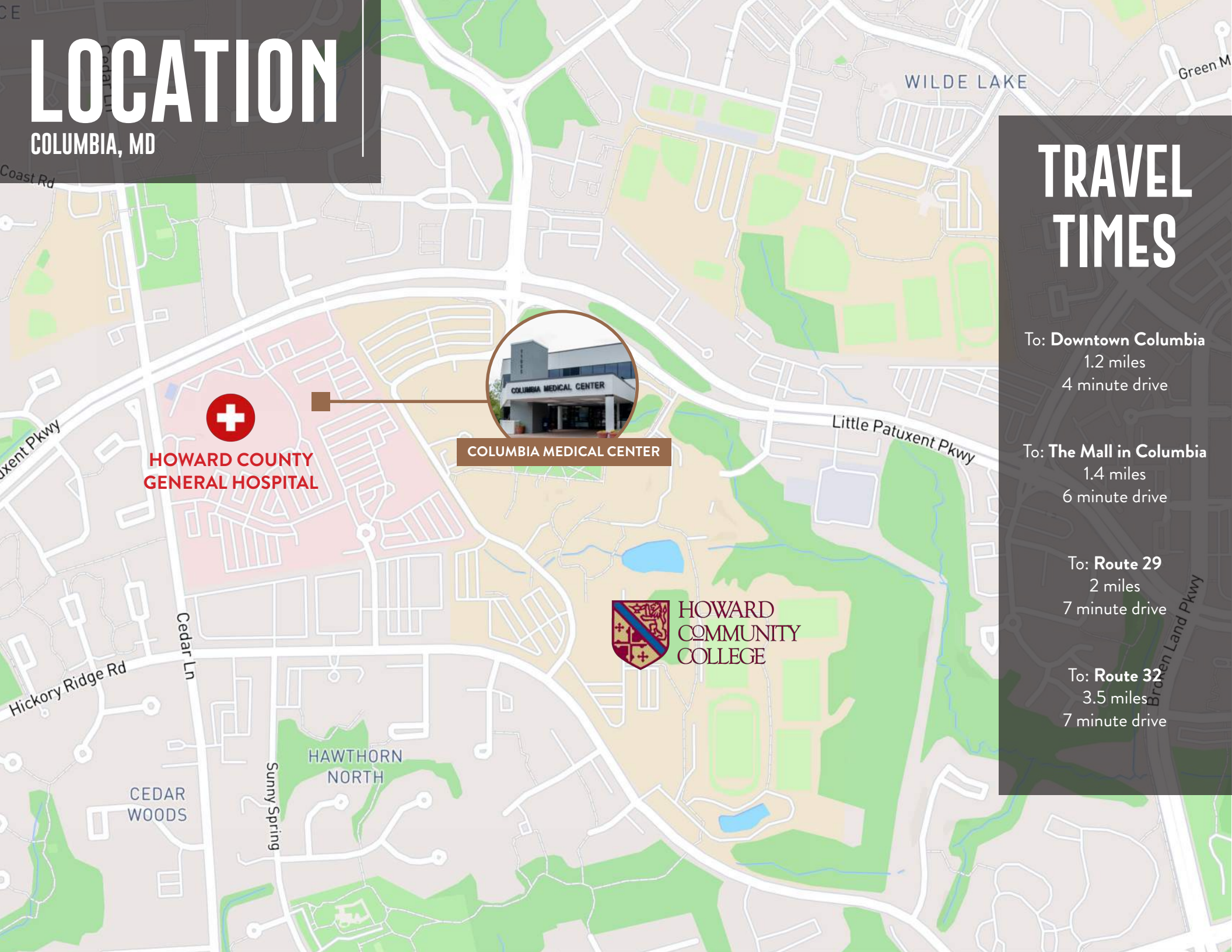
SUITE 107 - 1,261 SF

SUITE 204 - 1,159 SF

SUITE 208 - 1,123 SF

LOCATION

COLUMBIA, MD



**HOWARD COUNTY
GENERAL HOSPITAL**



COLUMBIA MEDICAL CENTER



**HOWARD
COMMUNITY
COLLEGE**

TRAVEL TIMES

To: **Downtown Columbia**
1.2 miles
4 minute drive

To: **The Mall in Columbia**
1.4 miles
6 minute drive

To: **Route 29**
2 miles
7 minute drive

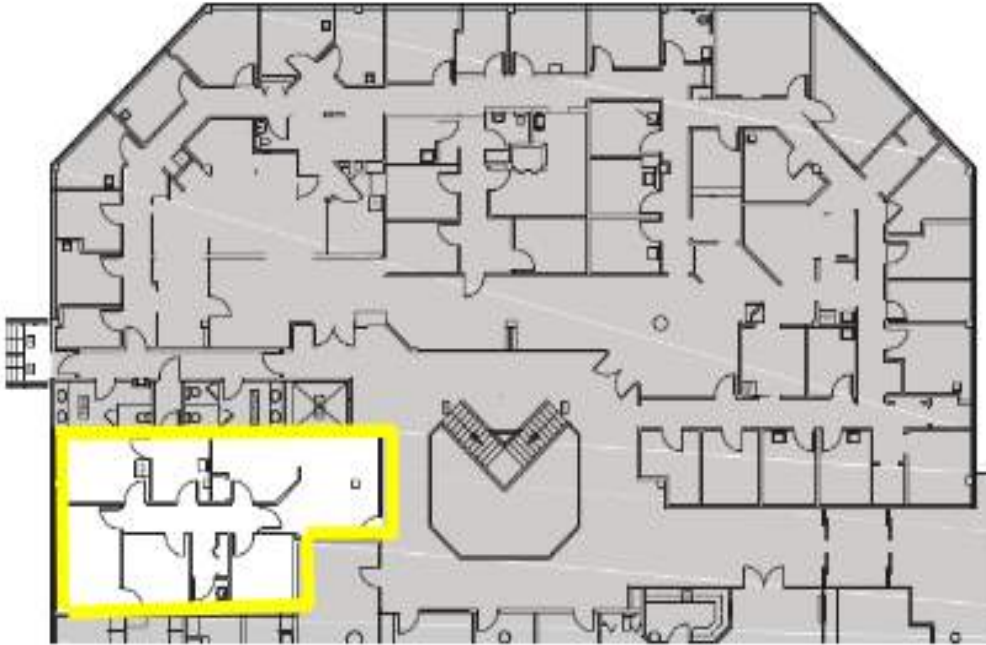
To: **Route 32**
3.5 miles
7 minute drive



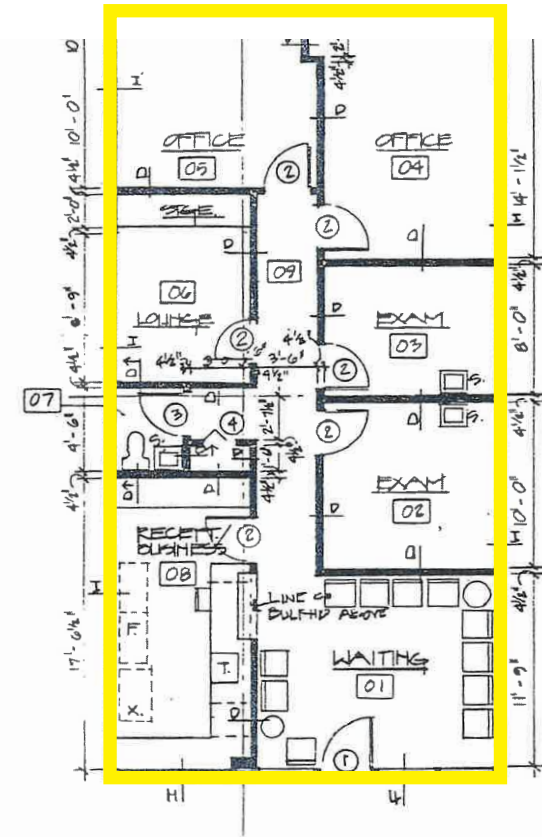
NEWLY RENOVATED



FLOOR PLANS

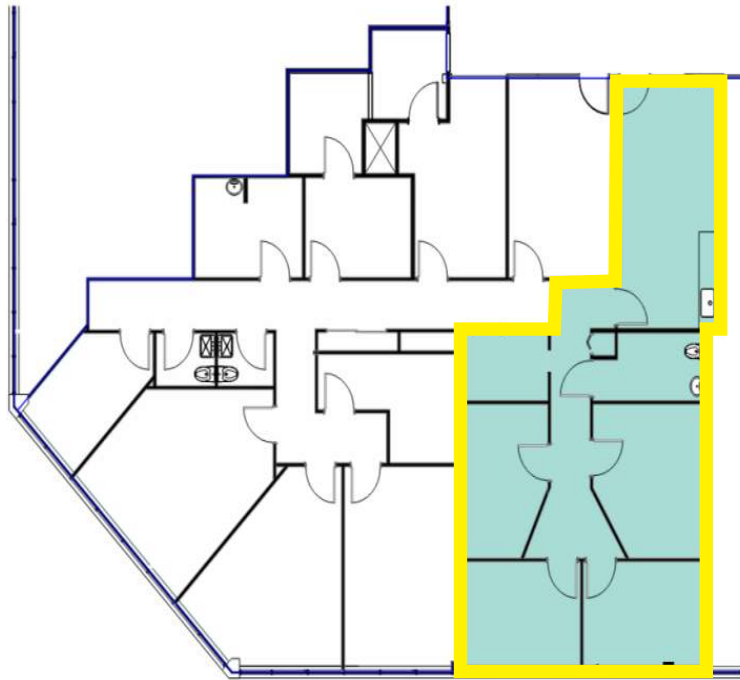


SUITE 107 1,261 SF



SUITE 204 1,159 SF

FLOOR PLANS



SUITE 208 1,123 SF

GET IN TOUCH

MATT O'CONNELL
301.614.8891
matto@donohoe.com

DONOHOE

donohoe.com/commercial-real-estate