



RETAIL SPACE FOR LEASE

Roland Plaza

Gaetz Ave. and 48th Street, Red Deer

» Located in downtown on Gaetz Ave.



FOR MORE
INFORMATION OR
TO VIEW, PLEASE
CONTACT:

Doug Grinde, VICE PRESIDENT

C: 403-815-0283

O: 780-463-3332

dgrinde@barclaystreet.com



LOCAL
EXPERTISE
MATTERS

CAPSTONE

MASTER-PLANNED RIVERSIDE COMMUNITY



- Up to 2 million sq. ft. of commercial and office development
- 2000 new condos and townhouses



DOWNTOWN

Downtown Red Deer is a unique mix of living, working and playing, and are guided by six themes: great streets, great places, great connections, vitality, authenticity and sustainability.

- | | | | | | | |
|-------------------|-------------|-----------------|-----------|----------|-----------|----------------------|
| 75+ | 30+ | 5 | 15 | 8 | 11 | 2 |
| Retail businesses | Restaurants | Fitness Studios | Salons | Spas | Cafes | Major grocery Stores |
-
- P 1500+** Public parking stalls **2** Parkades



PROPERTY INFORMATION

LOCATION: Intersection of Gaetz (50th) Avenue and 48th Street, Red Deer, AB

AVAILABLE FOR LEASE:

- 843 sq. ft. – 5004 48th Street
- 2,551 sq. ft. – 4808 50th Avenue
- 3,079 sq. ft. – 4806 50th Avenue
- ~~1,083 sq. ft. – 4804 50th Avenue~~ **LEASED**
- ~~5,518 sq. ft. – 5008 48th Street~~ **LEASED**
- ~~1,625 sq. ft. – 5002 48th Street~~ **LEASED**

AVAILABILITY: Immediately

PARKING:

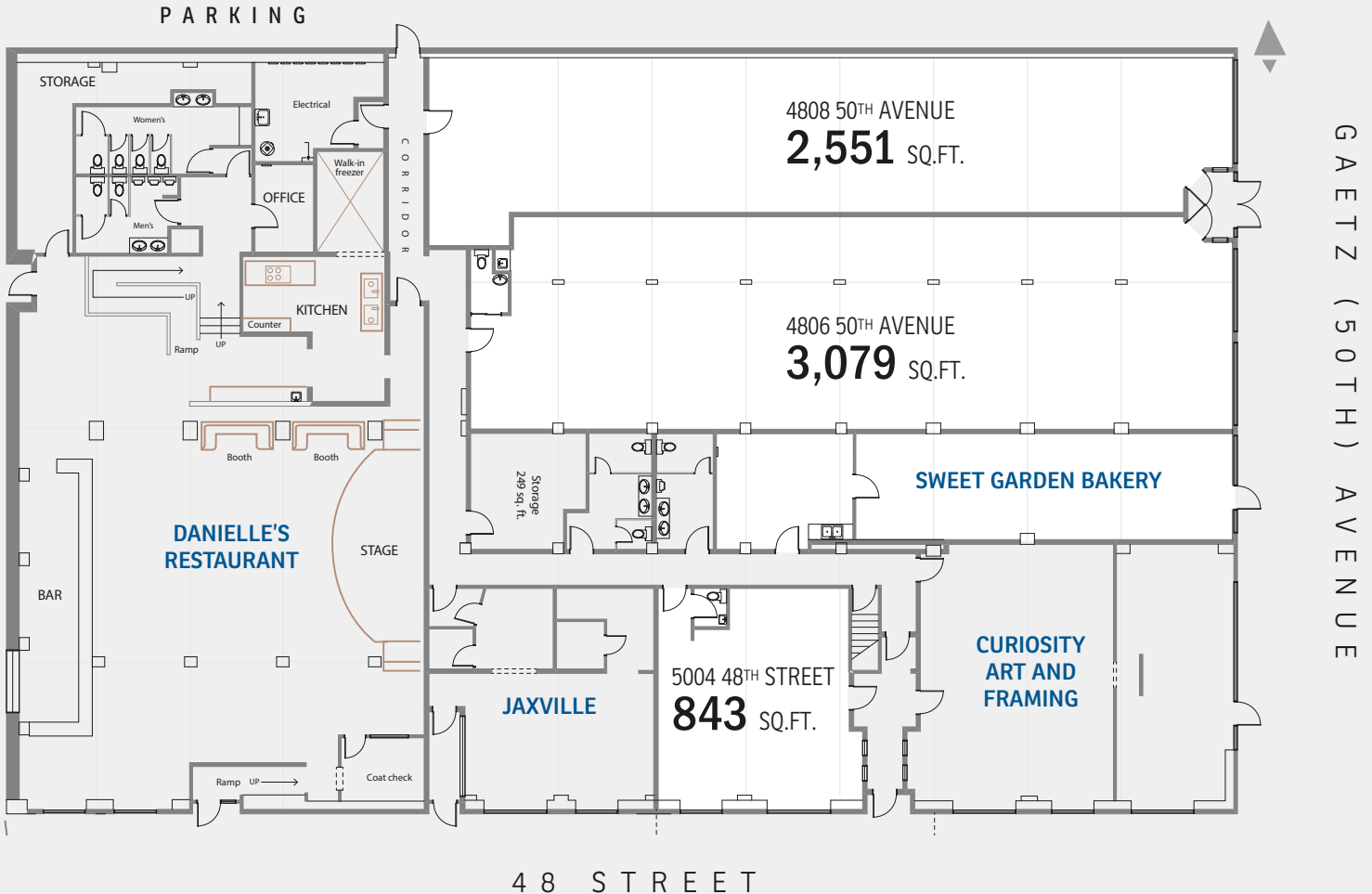
- » Surface stalls behind the property available for rent at market rate;
- » Abundant street parking

T.I.A.: Negotiable

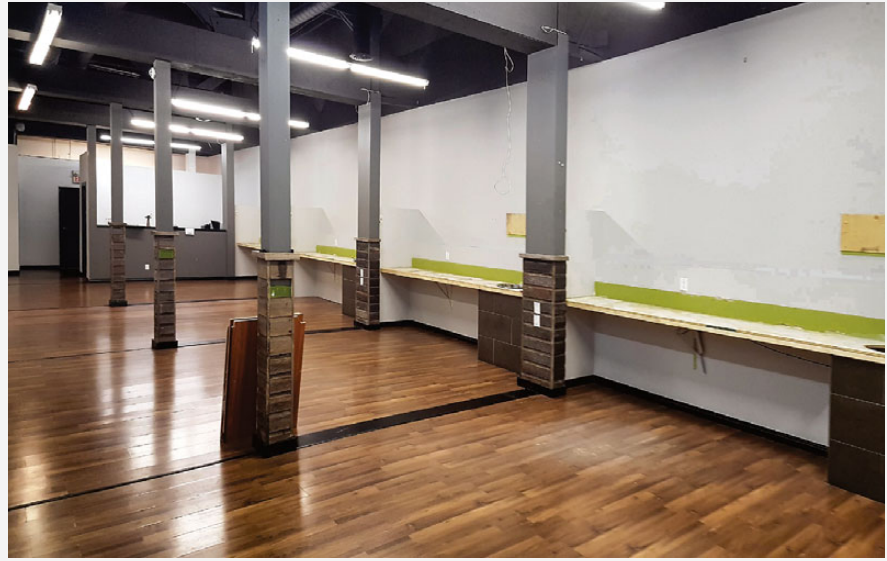
OP. COSTS AND TAXES:

\$7.60 per sq. ft. (est.). Gas and electricity separately metered.

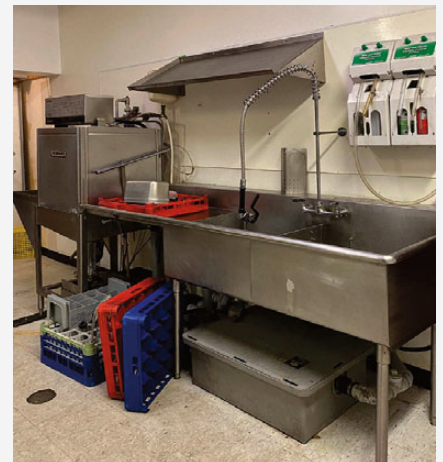
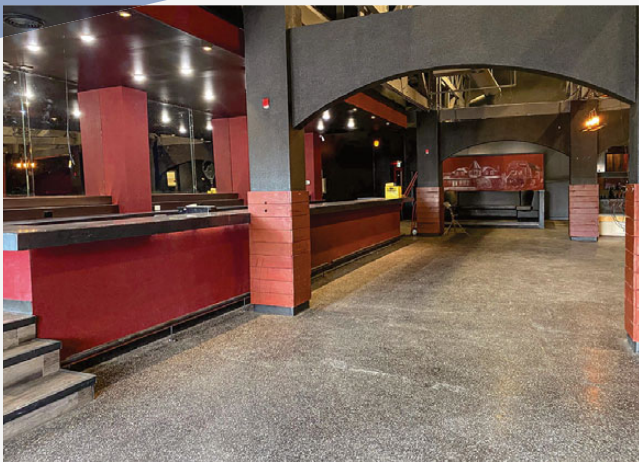
NET RENT: Aggressive lease rate



4808 50TH AVENUE
2,551 SQ.FT.



5008 48TH STREET
5,518 SQ.FT.



The information contained herein has been gathered from sources deemed reliable, but is not warranted as such and does not form any part of any future contract. This offering may be altered or withdrawn at any time without notice.

Copyright © 2025 Barclay Street Real Estate Ltd. All rights reserved.



LOCAL EXPERTISE MATTERS