

225 Broadway

The Transportation Building

The very attractive building at 225 Broadway boasts a Renaissance Revival design, and where it is located is just as appealing. It sits adjacent to the Fulton Street Hub, is near City Hall and courts, and is located in a very popular and high-traffic area, perfect for any New York native. Enjoy nice views of City Hall and the Brooklyn Bridge as well as over the whole oculus. While it's chock full of old school charm, the building is equipped with a destination dispatch elevator allowing for a touchless and more efficient transportation experience.



Leasing Agent

Mendy Braun
212-349-2154
Mbraun@braunmgmt.com

OWNER

Bowling Green Assocs., L.P.

MANAGING AGENT

KF Braun Management LLC

LOBBY DESK

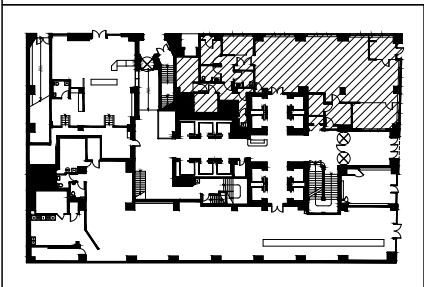
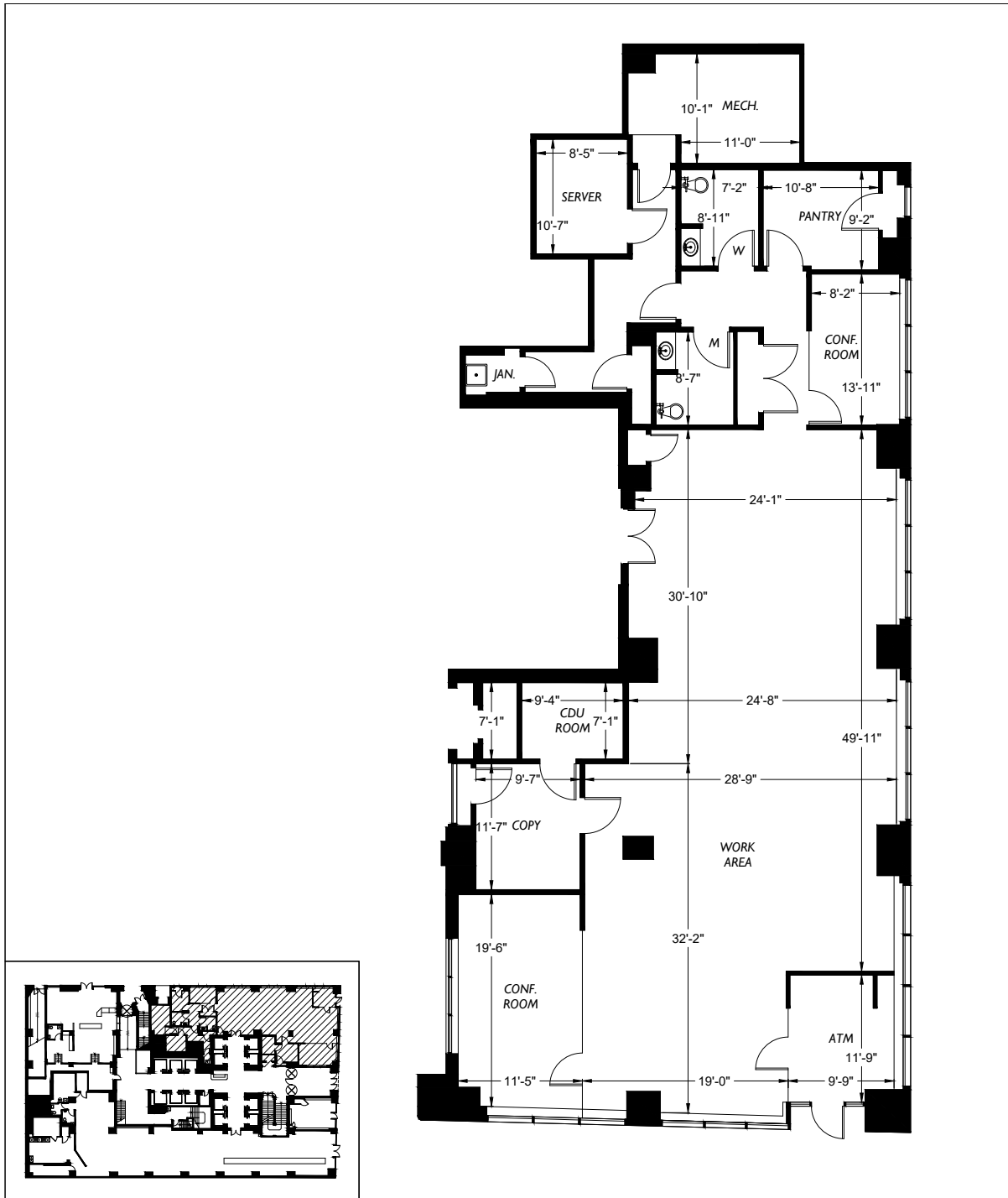
212-227-8638

Ground Floor - Suite Store 1 225 BROADWAY

| Suite | Sq. Ft. | Monthly Rent | Monthly Electricity | Electricity | Rent per Sq. Ft. |
|---------|---------|--------------|---------------------|--------------|------------------|
| Store 1 | 15,182 | | | Direct Meter | |

ESCALATION: 3% Per Annum In Lieu of Operating Expense. R.E. Tax Pass Along

NOTES: Ground floor plus basment. Any reasonable divison. Option to rent ground floor only \$350 PSF for Ground \$75 PSF for Basement



2-D
AS-BUILT
FLOOR PLANS

2DFLOORPLANS.COM
206-328-7410

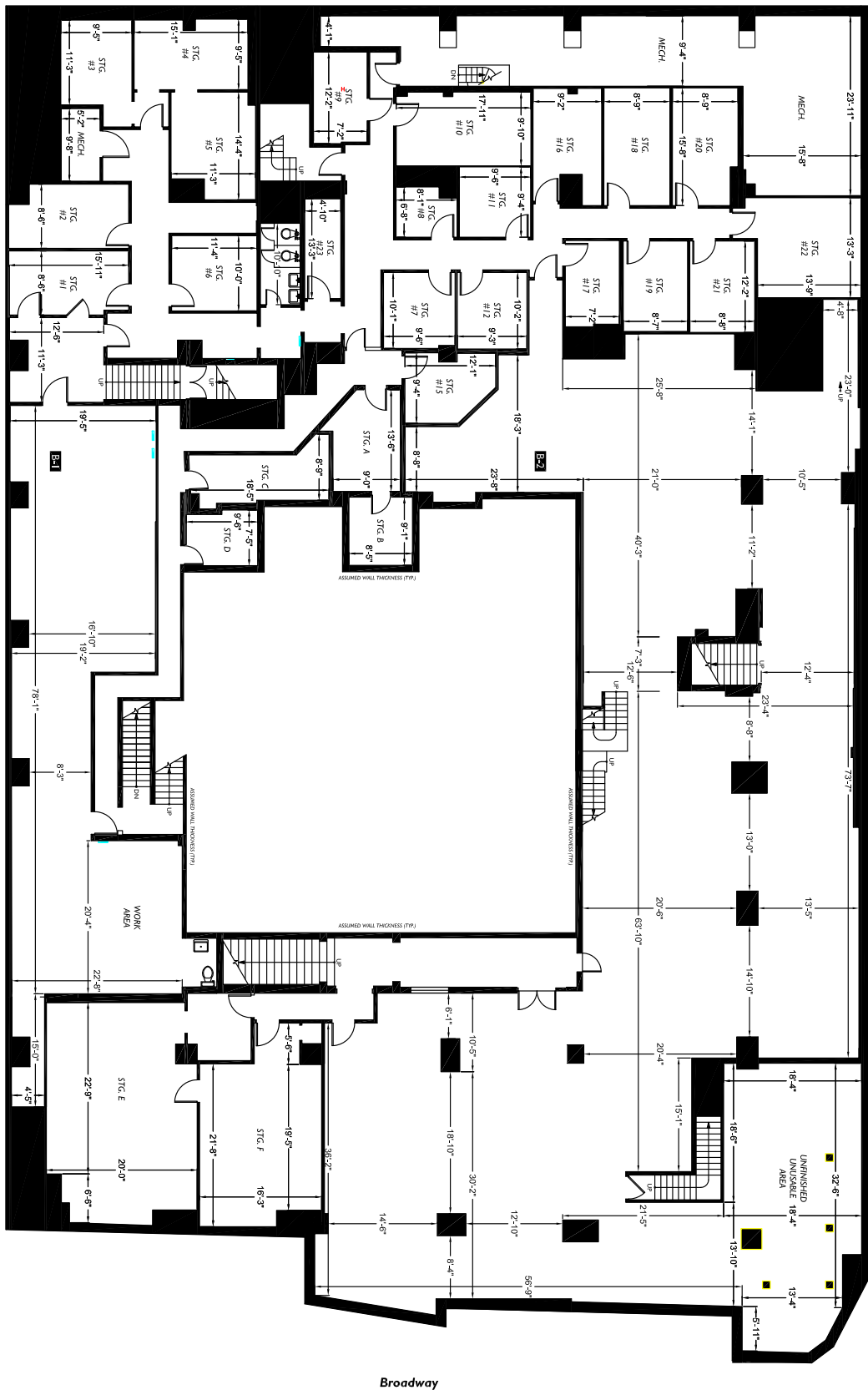
600 NW Gilman Blvd. Suite E
Issaquah, WA 98027

**225 BROADWAY
SUITE BANK
NEW YORK, N.Y.**

**KE | BRAUN
MANAGEMENT LLC**

Ground Floor - Suite Store 1 225 BROADWAY

PRODUCED BY AN AUTODESK STUDENT VERSION



PRODUCED BY AN AUTODESK STUDENT VERSION

PRODUCED BY AN AUTODESK STUDENT VERSION
Barclay Street