

Jones Lang LaSalle Brokerage, Inc.
Real estate license #01856260

WORK AT

19TEN SUNSET

LOS ANGELES - CALIFORNIA



WELCOME TO 19TEN

**Dedicated to creative expression
and limitless inspiration.**

Located on Sunset Boulevard, 19Ten is embedded at the center of L.A.'s hottest neighborhoods for the arts and entertainment industry. This enclave has recently undergone a renaissance and is known for its growing community of makers and thinkers who live and work in a hub for art, music, and experience.

+ **LIFESTYLE AMENITIES**

L.A.'s top eateries and essential shops at your doorstep

+ **EXPLORER'S PARADISE**

97 Walk Score

+ **IN GOOD COMPANY**

10 minutes to DTLA and Hollywood

A 5 MINUTE WALK

17 **LUNCH
FAVORITES**

6 **COFFEE
SHOPS**

7 **DRINK
SPOTS**

2 **WEEKEND
MARKETS**

Address:

1910 West Sunset Boulevard
Los Angeles, California 90026

Building Size:

99,761 SF

Suite Sizes:

744 - 4,642 RSF

Parking:

On-Site

Availability:

Now

[Spec Suite Virtual Tour](#)



DISCOVER THE EASTSIDE

ECHO PARK & SILVERLAKE



COMMUNITY FAVORITES



EATS

- | | |
|-----------------------------|-------------------------|
| Triple Beam Pizza | Ostrich Farm |
| Sticky Rice | Hard Times Pizza |
| Masa | Larchmont Bungalow Cage |
| Sage Plant Bistro & Brewery | Chipotle |
| Honey Hi | Mohawk Bend |
| Monty's Good Burger | Silverlake Ramen 2Go |



COFFEE

- Stories
- Silverback
- Woodcat
- Stereoscope
- Starbucks
- Tierra Mia



BARS

- Bar Flores
- Lowboy
- Bar Calo
- Little Joy
- Short Stop
- Sunset Beer
- Semi Tropic



MUSIC VENUES

- The Echoplex
- The Echo
- Bootleg
- Club Bahia
- Stories
- Silverlake Lounge
- Los Globos
- El Cid
- The Lyric
- Dodger Stadium

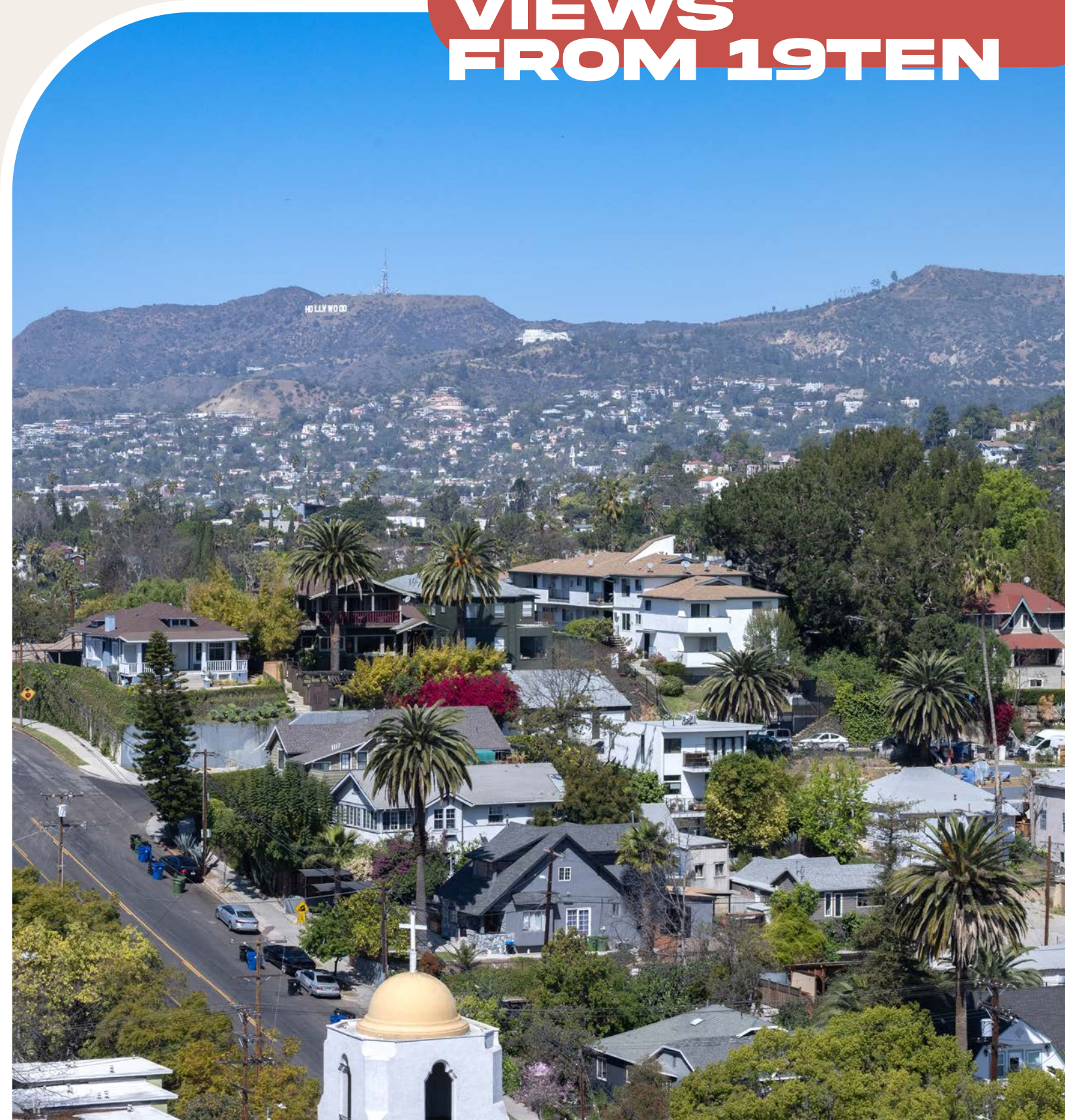


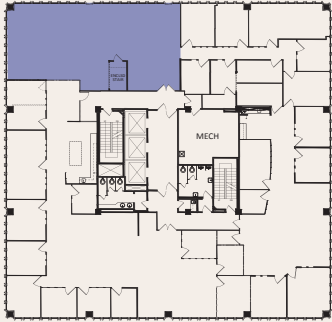
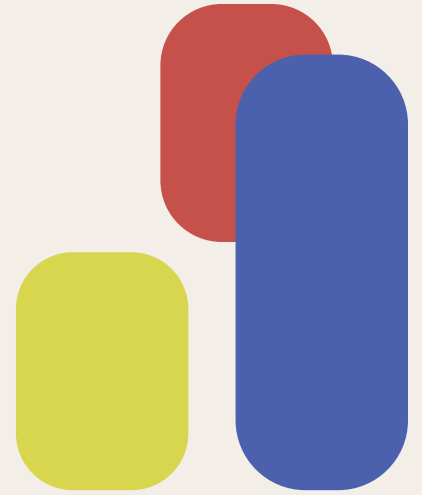
WELLNESS

- Erewhon
- Crossfit Echo Park
- Carbon Health
- Stronghold Climbing Gym
- Echo Park Lake
- Elysian Park
- The Strength Shoppe
- The Now Massage
- PHAROS
- Lassen's
- Echo Park Farmer's Market
- Silverlake Flea Market
- Walgreens



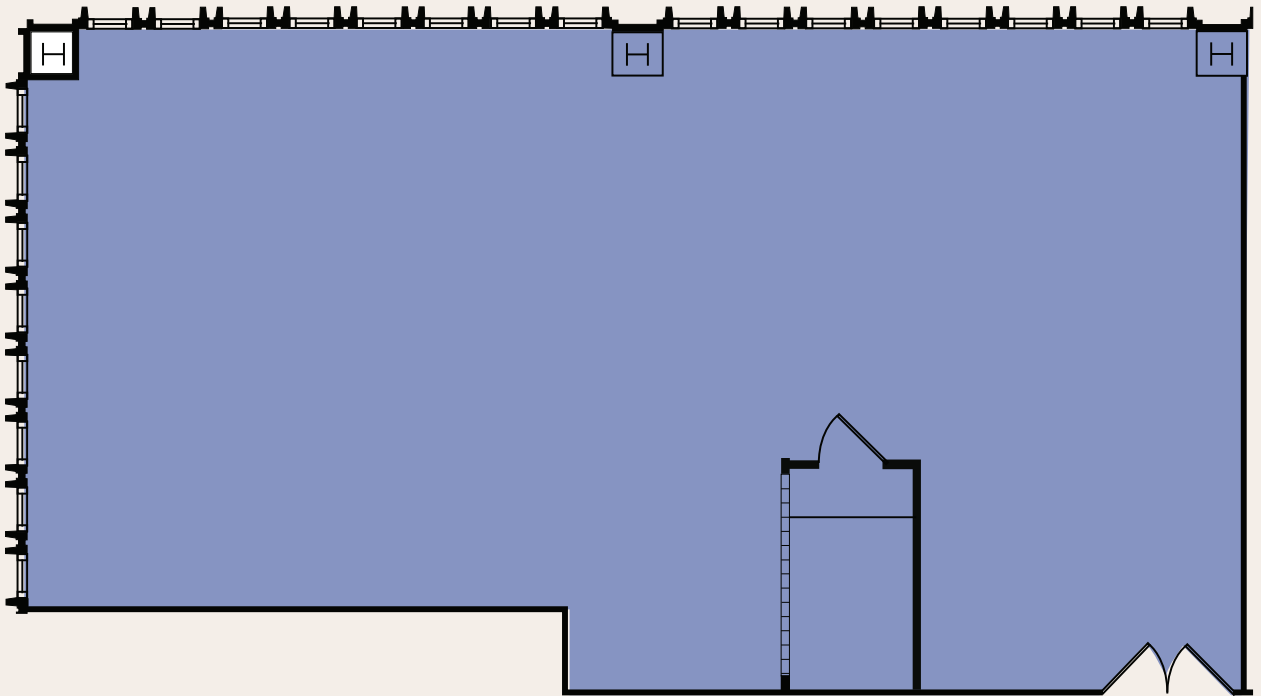
VIEWS FROM 19TEN

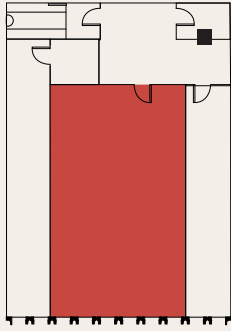
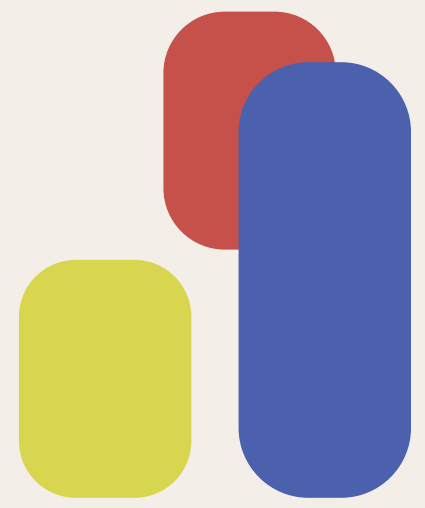
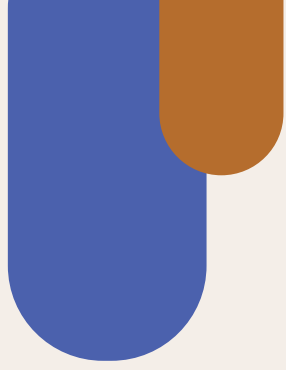




Suite 200

2,181 RSF



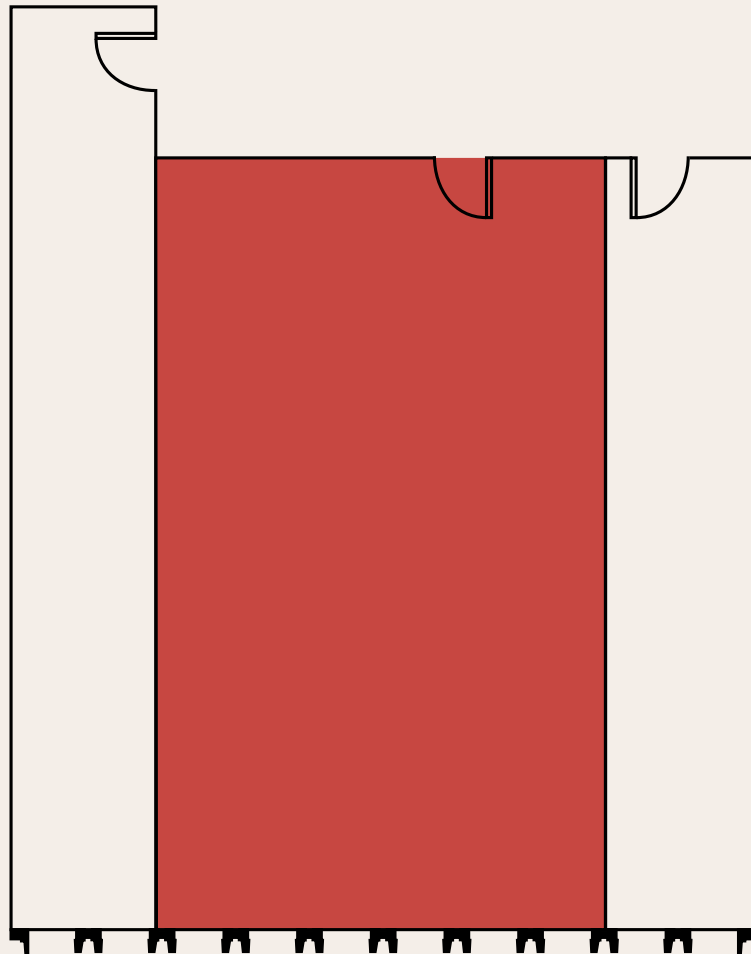


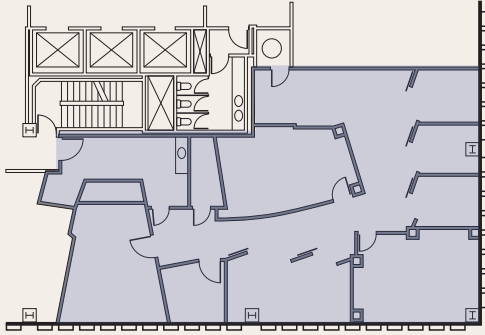
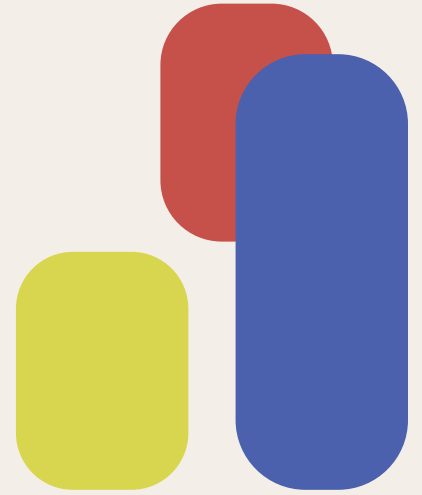
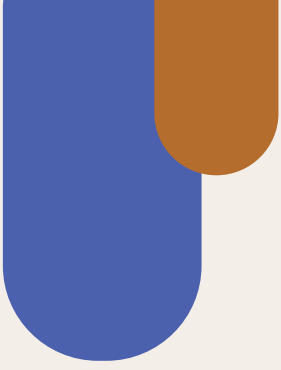
Suite 430



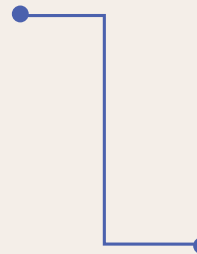
744 RSF

Available now



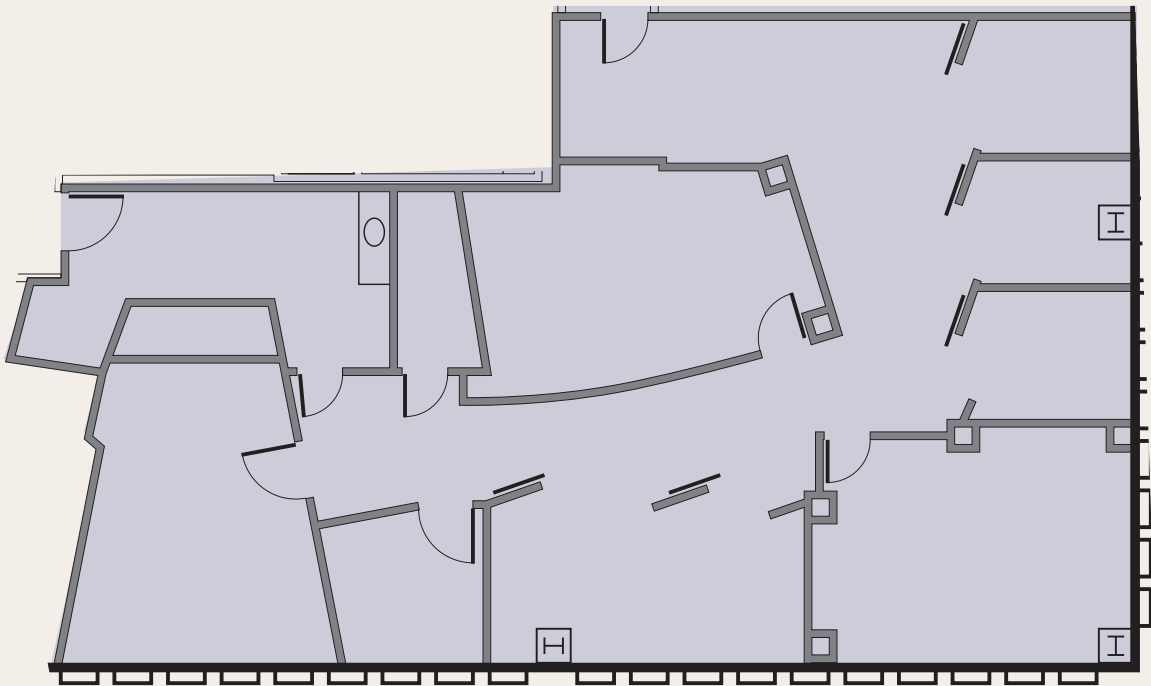


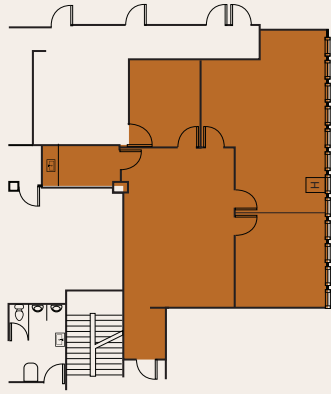
Suite 420



3,468 RSF

Available now

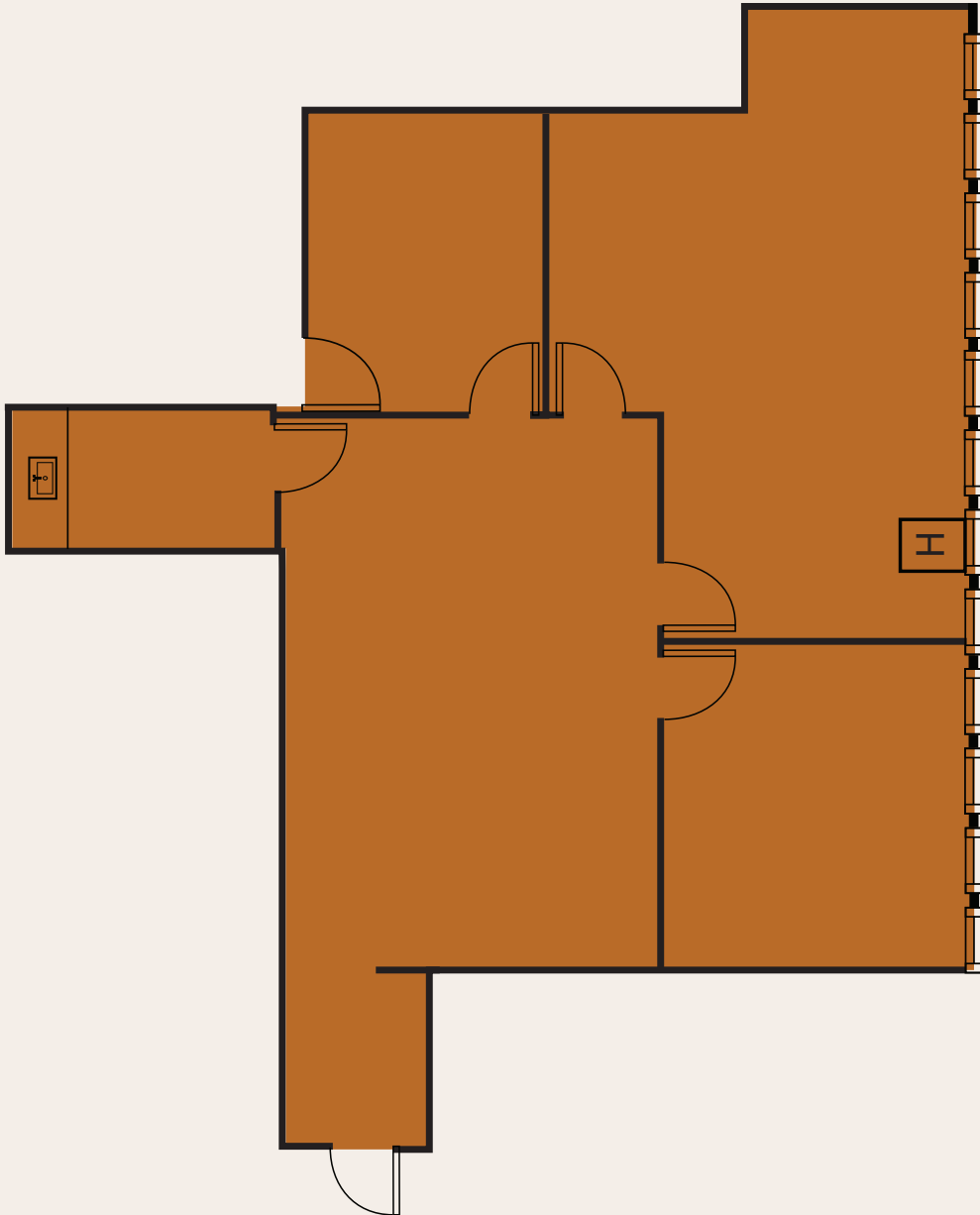


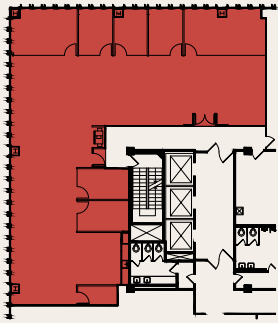
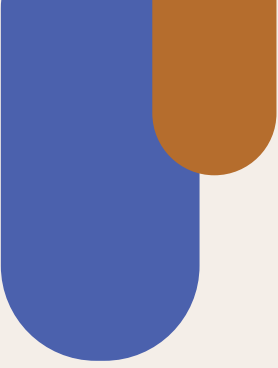


Suite 705

1,935 RSF

Available now



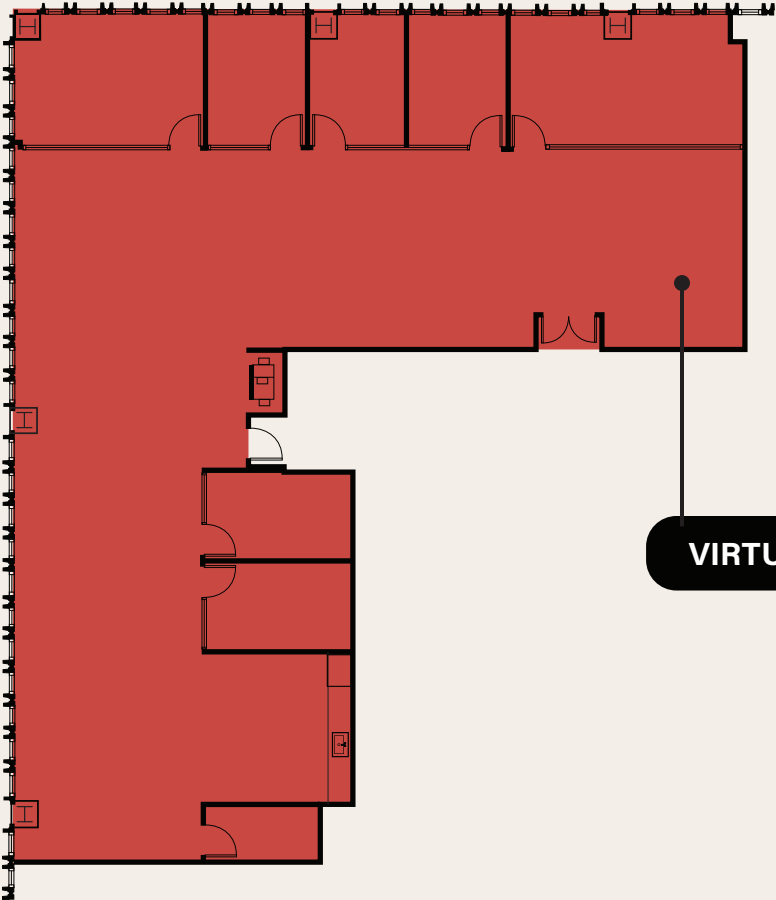


Suite 850

4,642 RSF

Spec Suite

Available now



VIRTUAL TOUR

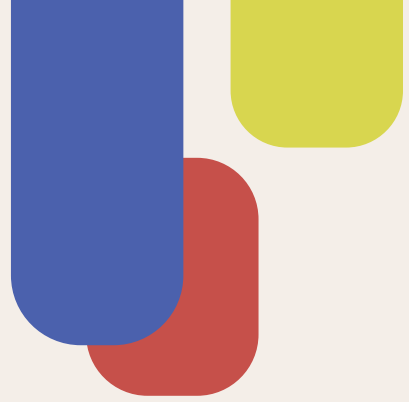
EXAMPLE SPEC SUITE RENDERINGS





EXAMPLE SPEC SUITE RENDERINGS





19TEN SUNSET

LOS ANGELES - CALIFORNIA

FOR LEASING INFORMATION

CAL ROSS

Vice President, LIC #01892435

cal.ross@jll.com

+1 213 239 6339

DANA VARGAS

Senior Vice President, LIC #01943620

dana.vargas@jll.com

+1 213 239 6121



Downtown Los Angeles Office

515 Flower St # 1300, Los Angeles, CA 90071

Although information has been obtained from sources deemed reliable, neither Owner nor JLL makes any guarantees, warranties or representations, express or implied, as to the completeness or accuracy as to the information contained herein. Any projections, opinions, assumptions or estimates used are for example only. There may be differences between projected and actual results, and those differences may be material. The Property may be withdrawn without notice. Neither Owner nor JLL accepts any liability for any loss or damage suffered by any party resulting from reliance on this information. If the recipient of this information has signed a confidentiality agreement regarding this matter, this information is subject to the terms of that agreement. © 2025 Jones Lang LaSalle IP, Inc. All rights reserved.